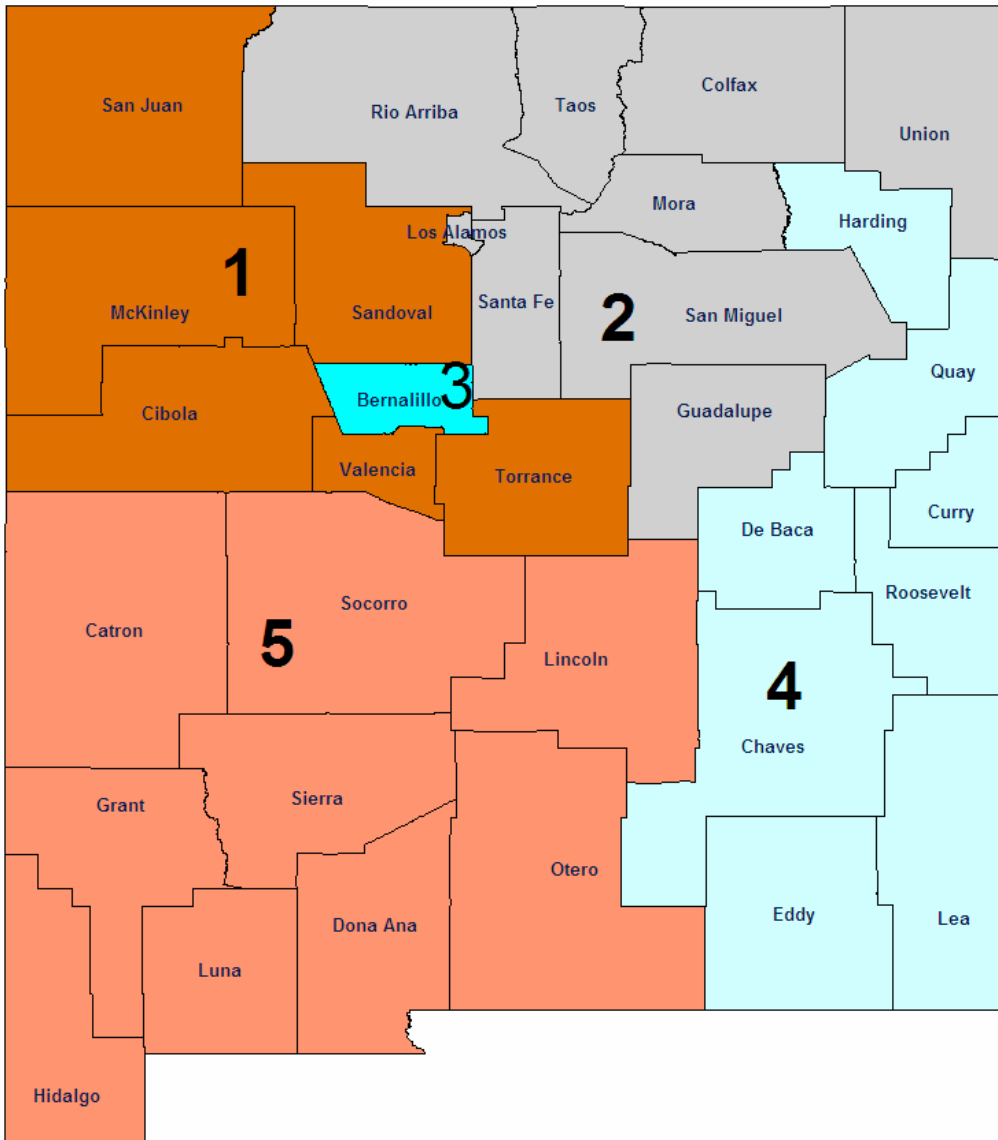


# Protective Services *360 Degrees* County Profiles



Protective Services Director's Office  
 (505) 827-8400    [www.cyfd.org](http://www.cyfd.org)

Angela Adams, Director  
 Maryellen Bearzi Administrative Deputy Director

Francine Anaya, Clinical Deputy Director  
 (505) 758-8871

**Region 1**

David Montoya    (505)867-2373

**Region 2**

Linda McNall    (505)827-7450

**Region 4**

Don Holden    (505)356-6688

**Region 5**

Nick Dagonos    (505)524-6400

Lisa Madrid-Schleicher, (Acting) Clinical Deputy Director  
 (505) 841-7800

**Region 3**

Michelle Herrera, (Acting) (505)841-8400





## Protective Services Initiatives

## Children, Youth and Families

### Vision

The Children, Youth and Families Department partners with communities to strengthen families in New Mexico to be productive and self-sufficient.

### Mission

CYFD believes in the strengths and resiliency of families who are our partners and for whom we advocate to enhance their safety and well-being. We respectfully serve and support children and families and supervise youth in responsive, community-based system of care that is client-centered, family-focused and culturally competent.

- To continue efforts ensuring timely response to reports of maltreatment, enhancing voluntary services to at risk families, providing safe homes for children in out-of-home care, and working with families to address the risk issues that contribute to child maltreatment
- To improve outcomes addressing the unique need of older youth in faster care in the areas of education, financial assistance and housing
- To enhance visitation with children in foster care through staff training, tracking mechanisms and quality assurance reviews
- To expand foster and adoptive family recruitment efforts to increasing the number of placement resources available for children needing homes
- To partner with the New Mexico Court Improvement Project and the courts to expedite permanency for children by reducing delays, minimizing the need for continuances, expediting appeals and enhancing the quality of representation
- To facilitate the active engagement of parents, foster parents and youth in case planning through Team Decision Making, adoption mediation, video conference and increasing the participation of incarcerated parents



Did You Know???

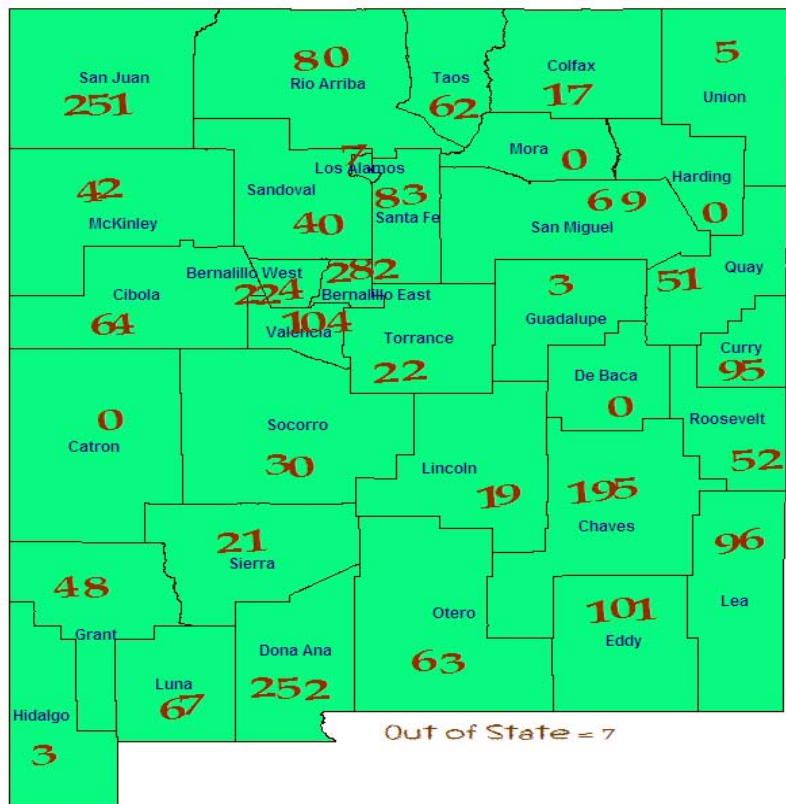
Protective Services  
Children In Care

As of December 31, 2007

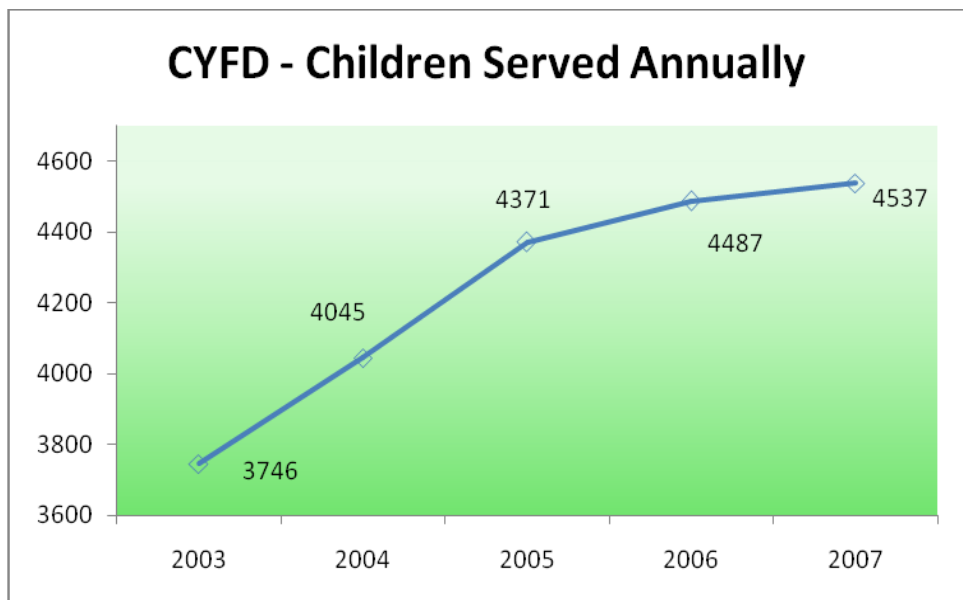
Did You Know?

Based on the December 31, 2007 point in time calculation, there were **2,433** children and **975** foster care providers. New Mexico needs more foster care providers, especially in rural areas. For more information on fostering a New Mexico child go to: [www.cyfd.org/foster.html](http://www.cyfd.org/foster.html).

For the year ending December 31, 2007 there were a total of **4,537** served by the child welfare system in New Mexico. Since 2003 there has been a **21%** increase in the total children served annually, indicating a growing pressure on the entire child welfare system.



Source: SM0907



Source: SM0907

# BERNALILLO EAST COUNTY (REGION 3/BRENNA DOTSON COUNTY MANAGER)

According to the US Census in 2005, Bernalillo County attained an overall population of 592,570 or 31.95% of the state's total population. There were 144,124 children in the county in 2005; this represents 28.16% of the state's total children under 18. While the whole county accounts for **28.16%** of the state's total children under 18, Bernalillo East County had **11.49%** of the state's total children in care as of December 31, 2007.

	Race and Ethnicity			
	Bernalillo <sup>1</sup>		Total Population <sup>2</sup>	
	Children Under 19 yrs	Children Under 19 yrs of Hispanic Origin	Bernalillo	New Mexico
Total Population	162,306	87,329	592,570	1,854,938
White	84.6%	93.6%	72.5%	66.8%
Black	3.8%	2.0%	2.8%	1.9%
American Indian or Alaskan Native	6.2%	2.1%	4.3%	9.5%
Asian	1.9%	0.5%	2.0%	1.1%
Native Hawaiian or Other Pacific Islander	0.1%	0.1%	20.0%	0.1%
Some other Race	3.3%	1.7%	14.9%	17.0%
Hispanic or Latino			44.3%	42.1%
Under 18 yrs			144,124	511,768
% of Families Living under the poverty Level			10.0%	14.5%

1. Source: U.S. Census Bureau, Population Division\Bureau of Business and Economic Research, Univ. of New Mexico.  
 2. Source: U.S. Census Bureau\State and County QuickFACTS

Children In Care End 12/31/07 Bernalillo East County		
HISPANIC	No	Yes
Percentage	49.6%	50.4%

RACE	Total	%
American Indian or Alaskan Native	50	2.04%
Asian	4	0.16%
Black or African American	34	1.38%
Unable to Determine	1	0.04%
White	193	7.86%

Source: SM0907



Age of Children in Care End 12/31/07													
County	< 1 yr		1 - 5 yrs		6 - 10 yrs		11 - 15 yrs		16 - 17 yrs		18+ yrs	Total	
	%	#	%	#	%	#	%	#	%	#			
<b>Bernalillo East</b>	8%	23	40%	113	20%	56	16%	45	11%	31	5%	14	282
<b>Region Total</b>	6%	32	37%	189	23%	117	18%	90	10%	51	5%	28	506
<b>State Total</b>	2%	49	34%	835	33%	810	21%	516	6%	147	4%	98	2,455

Source: SM0907

# BERNALILLO EAST COUNTY (REGION 3/BRENNA DOTSON COUNTY MANAGER)

## PROTECTIVE SERVICES REPORTS AND INVESTIGATIONS - QUARTER 2 SFY 08: OCTOBER - DECEMBER 2007

County	Accepted Reports	Investigations						Victim Rate <sup>2</sup> per 1,000 children	
		Substantiated		Unsubstantiated		Total Investigations	County % of State Total Investigations <sup>1</sup>		Number of Children Victims
Bernalillo East	1,119	85	13.9%	527	86.1%	612	13.9%	127	7.1
Region Total	1,119	179	13.8%	1,117	86.2%	1,296	29.4%	256	7.1
State Total	3,748	1,041	23.6%	3,362	76.4%	4,403	100.0%	1,589	12.4

Note: Not all "accepted reports" result in investigations completed during the period under review.

- Both County and Regional data are calculated as a % of the State's total investigations for the period under review.
- For the quarterly *360 Degrees* County Profiles Report this information is calculated by annualizing the quarterly data. For the SFY Annual *360 Degrees* County Profiles Report this information is calculated, based on four quarters of reported data.

Source: SM01a02 and SM06a01

**HOW ARE WE DOING?**  
By comparing "total Investigations" for the quarter with "accepted reports" for the quarter, you can get a **sense** of work flow. To get a further sense of work flow, also review the cases with a "pending over 30 days" status and the case weight information for each county.

## CPS ALLEGATION TYPES OF CHILD MALTREATMENT - QUARTER 2 SFY 08: OCTOBER - DECEMBER 2007

County	Physical Abuse					Sexual Abuse					Physical Neglect				Totals					
	Total	Substantiated	Unsubstantiated	Total	Substantiated	Unsubstantiated	Total	Substantiated	Unsubstantiated	Total	Substantiated	Unsubstantiated	Total	Substantiated	Unsubstantiated					
Bernalillo East	435	47	10.8%	388	89.2%	55	6	10.9%	49	89.1%	1,039	142	13.7%	897	86.3%	1,529	195	12.8%	1,334	87.2%
Region Total	938	88	9.4%	850	90.6%	113	9	8.0%	104	92.0%	2,141	286	13.4%	1,855	86.6%	3,192	383	12.0%	2,809	88.0%
State Total	3,347	614	18.3%	2,733	81.7%	385	53	13.8%	332	86.2%	8,225	1,900	23.1%	6,325	76.9%	11,957	2567	21.5%	9,390	78.5%

Note: In every investigation there may be multiple allegations of maltreatment for one or more children. In counties with small populations, very small numbers in any category may render suspect any data collected during the period under review.

Source: SM06a01



## PENDING INVESTIGATIONS: DECEMBER 2007

County	Reports Without An Investigation After 30 days		Pending Over 30 Days						Pending Less Than 30 Days		
	11/07	12/07	Baseline 11/04 Total	11/07 Total	12/07 Total	Priority Levels 12/07			Baseline 11/04 Total	11/07 Total	12/07 Total
						E	P1	P2			
Bernalillo East	0	0	458	228	168	10	29	129	178	174	123
Region Total	0	1	1,368	556	434	33	88	313	340	357	247
State Total	3	2	4,917	1,614	1,165	98	239	828	1,296	1,141	900

Source : SM06a01

# BERNALILLO EAST COUNTY (REGION 3/BRENNA DOTSON COUNTY MANAGER)

## CHILDREN IN AN OUT OF HOME PLACEMENT FOR MORE THAN TEN DAYS WITH AN INITIAL EPSDT<sup>1</sup> EXAMINATION 2ND QUARTER SFY 08



County	Children With Initial EPSDT Exam During Reporting Period		Children Without Initial EPSDT Exam During Reporting Period		Total Children in Out of Home Placement Greater Than 10 Days <sup>2</sup>	Children with Initial EPSDT Within 30 Days	
	#	%	#	%	#	#	%
<b>Bernalillo East</b>	14	46.7%	16	53.3%	30	13	43.3%
Region Total	30	51.7%	28	48.3%	58	24	41.4%
State Total	144	49.8%	145	50.2%	289	127	43.9%

1. EPSDT = Early and Periodic Screening, Diagnosis and Treatment Medicaid Medical Visits.

2. Report counts all children entering care during the parameter period and remaining in care more than 10 days.

Source: SM10a36

### ADOPTION AND ADOLESCENT RESOURCE TEAM –2ND QUARTER SFY 08

	ADOPTION MEASURES NOT ACHIEVED	Total Cases	Not Achieved
			as % of Total Cases
<b>Bernalillo</b>	4	310	1.3%
Region Total	4	310	1.3%
State Total	67	2,845	2.4%

### ADOPTION AND ADOLESCENT RESOURCE TEAM –2ND QUARTER SFY 08

	INDEPENDENT LIVING MEASURES NOT ACHIEVED	Total Cases	Not Achieved
			as % of Total Cases
<b>Bernalillo</b>	1	182	0.5%
Region Total	1	182	0.5%
State Total	27	1,125	2.4%

Source: JTS Database

### Permanency Worker Case Weights SM0904 December 2007 Monthly Report

County	Number of Children in Custody as of 12/31/07	Number of Permanency Worker Positions as of 12/31/07	Number of Children per Permanency Worker as of 12/07
<b>Bernalillo East</b>	293	19	15.4
State Total	519	37	14.0
Region Total	2,508	147.5	17.0

Source: December Monthly 2007 SM0904  
FTE Position Responsible for Permanency Planning  
Includes 110 Children w/No Plan

### Investigation Worker Case Weight Report CY 2007

County	# of PS Investigation Worker Positions	Total # PS Accepted Reports 2007	Total # PS Completed Investigations 2006	Total # PS Completed Investigations 2007	% of Increase/Decrease in Investigations from CY06	Pending Investigation over 30 days 12/07	CY07 Avg Investigations Completed per Yr per worker	CY07 Avg Investigations Completed per Mo per worker
<b>Bernalillo East</b>	19.0	2,082	2,265	8.8%	168	119.2	9.9	
State Total	39.0	4,559	4,402	4.9%	434	118.4	9.9	
Region Total	132.5	15,424	16,116	-0.7%	1,065	120.8	10.1	

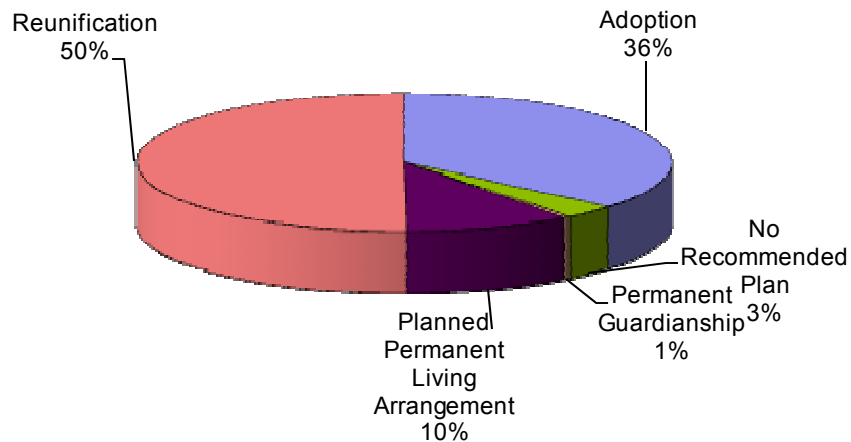
Source: SM01a02

# BERNALILLO EAST COUNTY (REGION 3/BRENNA DOTSON COUNTY MANAGER)

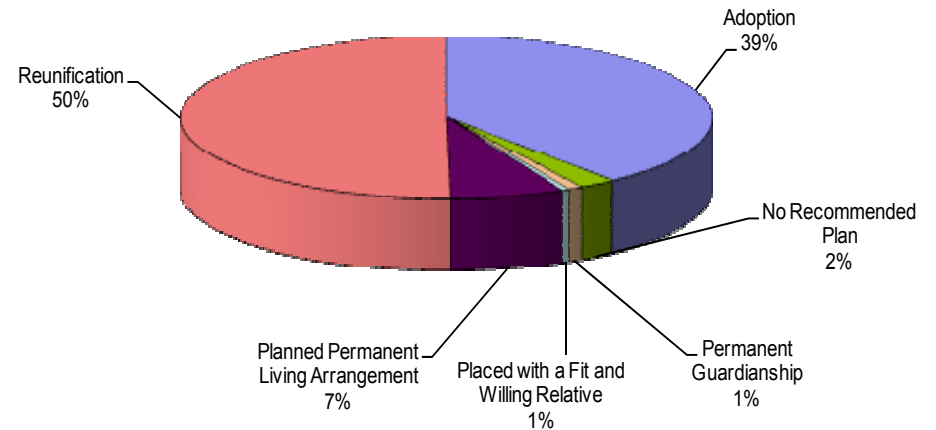
## POINT IN TIME MEASURES: DECEMBER 31, 2007

County Bernalillo East	Number	Region Total	State Total	% of State Total
<b>NUMBER OF CHILDREN IN CARE</b> (SM0907)	282	506	2,455	11.49%
• <b>AVERAGE LENGTH OF STAY IN FOSTER CARE (IN MONTHS - END QTR)</b> (SM0907)	41.4		21.3	
<b>NUMBER OF FOSTER CARE PROVIDERS</b> (PM02a01)	220	220	975	22.56%
<b>NUMBER OF ADOPTION PROVIDERS</b> (PM02a01)	279	279	1,427	19.55%
<b>NUMBER OF CHILDREN WITH A PLAN OF ADOPTION</b> (PM02a01)	101	191	935	10.80%
• <b>NUMBER CHILDREN FREED AND WAITING</b> (SM0907)	67	112	553	12.12%
• <b>NUMBER OF CHILDREN FREED AND WAITING (WITH RESOURCES)</b> (SM0803)	26	44	175	14.86%
• <b>NUMBER OF CHILDREN FREED AND WAITING (WITHOUT RESOURCES)</b> (SM0803)	41	68	378	10.85%
<b>PERMANENT PLAN LIVING ARRANGEMENT</b> (SM0904)	28	43	165	16.97%
<b>WORKER VISITS WITH CHILDREN IN CARE</b> (SM08-06)	<b>Coming Soon</b>			

**Permenency Plan Goals of Children in Custody**  
**Bernaillio East N = 279**  
**Point In Time December 31, 2007**  
 Source: SM0904



**Permanency Plan Goals of Children in Custody**  
**New Mexico N = 2381**  
**Point In Time December 31, 2007**  
 Source: SM0904





# BERNALILLO EAST COUNTY (REGION 3/BRENNA DOTSON COUNTY MANAGER)

## RECURRENCE OF SUBSTANTIATED MALTREATMENT WITHIN 6 MONTHS OF A PREVIOUSLY SUBSTANTIATED REPORT OF MALTREATMENT

County Bernalillo East	Total # of Maltreatment Victims	# With Recurrence	% With Recurrence
2nd Qtr SFY 08	95	14	14.7%
Region Total	179	16	8.9%
State Total	1,030	78	7.6%

Round 1 Federal National Standard = No more than 6.1%  
New Mexico SFY 08 Standard = No more than 7.0%

Source: SM0907

## CHILDREN REENTERING CARE WITHIN TWELVE MONTHS OF A PRIOR EPISODE

County Bernalillo East	Total Entering Care #	# Reentering Within 12 Months	% Reentering Within 12 Months
2nd Qtr SFY 08	55	9	16.4%
Region Total	102	15	14.7%
State Total	535	76	14.2%

Round 1 Federal National Standard = No More than 8.6%  
New Mexico SFY 08 Standard = No Standard

Source: SM0907

Note: SFY = State Fiscal Year. In New Mexico the State Fiscal year is July 1 through June 30 of the following year.

## CHILDREN MALTREATED IN FOSTER CARE (PERFORMANCE OVER A ROLLING 12 MONTHS)

County Bernalillo East	Total # of Chil- dren in Care	# Maltreated	% of Maltreated in Foster Care
2nd Qtr SFY 08	540	1	0.19%
Region Total	985	6	0.61%
State Total	4,700	24	0.51%

Round 1 Federal National Standard = No more than 0.57%  
New Mexico SFY08 State Standard = No more than 0.57%

Source: SM0907

## CHILDREN REUNIFIED IN LESS THAN TWELVE MONTHS OF ENTRY INTO CARE

County Bernalillo East	Total # Reunified	# Reunified less than 12 mos	% Reunified less than 12 mos
2nd Qtr SFY 08	30	22	73.3%
Region Total	55	46	83.6%
State Total	290	236	81.4%

Round 1 Federal National Standard = At or above 76.2%  
New Mexico SFY 08 State Standard = At or above 85.0%

Source: SM0907

## CHILDREN IN FOSTER CARE FOR UP TO 12 MONTHS WITH NO MORE THAN TWO PLACEMENT SETTING

County Bernalillo East	Total	# With Two or Fewer	% With Two or Fewer
2nd Qtr SFY 08	161	130	80.7%
Region Total	303	243	80.2%
State Total	1,448	1,163	80.3%

Round 1 Federal National Standard = At or Above 86.7%  
New Mexico SFY 08 Standard = At or Above 86.7%

Source: SM0907

## CHILDREN WITH A FINALIZED ADOPTION WITHIN 24 MONTHS OF ENTRY INTO CARE

County Bernalillo East	Total # Adopted	# <24 mos.	% <24 mos.
2nd Qtr SFY 08	20	5	25.0%
Region Total	33	6	18.2%
State Total	101	26	25.7%

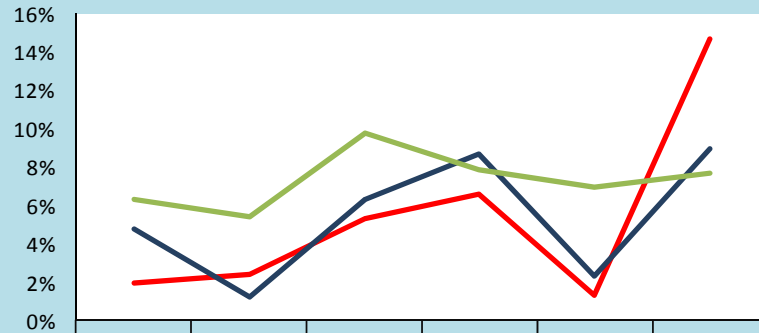
Round 1 Federal National Standard = at least 32.0%  
New Mexico SFY 08 Standard = At least 34.0%

Source: SM0907



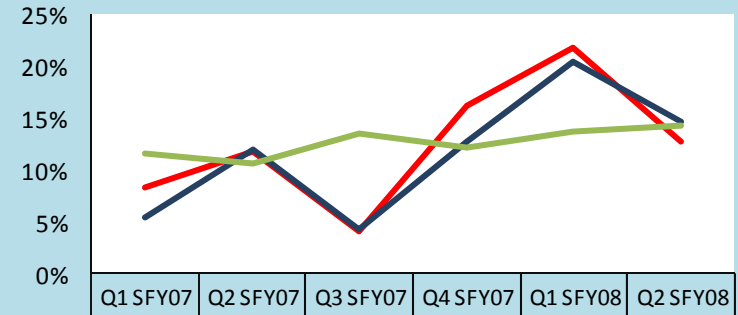
# BERNALILLO EAST COUNTY (REGION 3/BRENNA DOTSON COUNTY MANAGER)

**Trends of Recurrence of Substantiated Maltreatment Within 6 Months of a Previously Substantiated Report of Maltreatment**  
ACF National Standard = 6.1%



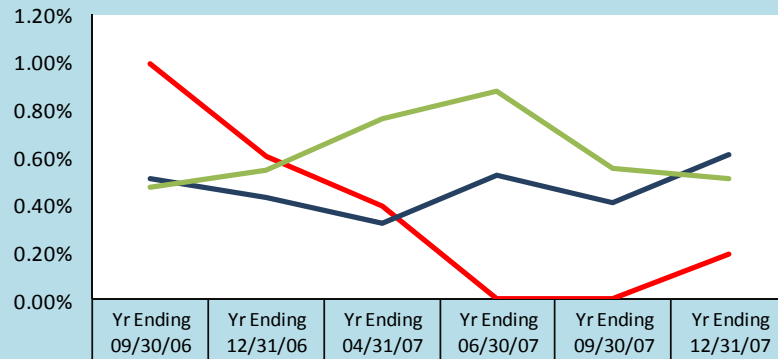
— Bernalillo East	1.9%	2.4%	5.3%	6.6%	1.3%	14.7%
— Region Total	4.7%	1.2%	6.3%	8.6%	2.3%	8.9%
— State Total	6.3%	5.4%	9.7%	7.8%	6.9%	7.6%

**Trends of Children Reentering Care within Twelve Months of A Prior Episode**  
ACF National Standard = 8.6%



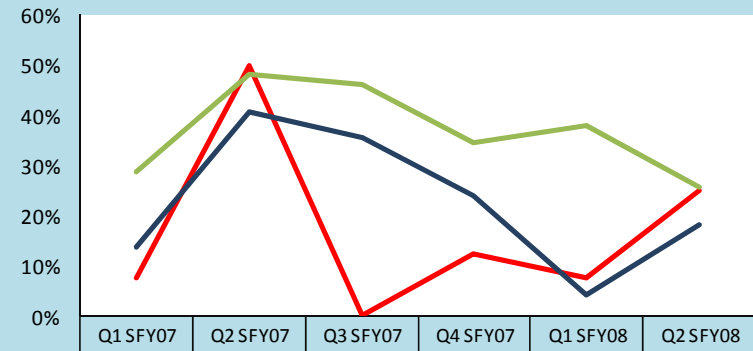
— Bernalillo East	8.3%	11.7%	4.1%	16.2%	21.7%	12.8%
— Region Total	5.5%	12.1%	4.3%	12.8%	20.5%	14.7%
— State Total	11.6%	10.6%	13.4%	12.1%	13.6%	14.2%

**Trends of Children Maltreated in Foster Care (performance over Rolling 12 Months)**  
ACF National Standard = 0.57%



— Bernalillo East	0.99%	0.60%	0.39%	0.00%	0.00%	0.19%
— Region Total	0.51%	0.43%	0.32%	0.52%	0.41%	0.61%
— State Total	0.47%	0.54%	0.76%	0.88%	0.55%	0.51%

**Trends of Children With a Finalized Adoption Within 24 Months of Entry Into Care**  
ACF National Standard = 32.0%



— Bernalillo East	7.7%	50.0%	0.0%	12.5%	7.7%	25.0%
— Region Total	13.6%	40.7%	35.7%	24.0%	4.0%	18.2%
— State Total	28.8%	48.2%	46.3%	34.4%	38.0%	25.7%

Note: The reader should note that in the instance of existing children maltreated in Foster Care, cases are carried forward in the calculation for 12 rolling months. Thus trend data will display the existing cases for 12 consecutive months. For this reason elevated levels across multiple quarter may not indicate new cases for this measure.

# BERNALILLO WEST COUNTY (REGION 3/ANGELINA UNALE-HALE COUNTY MANAGER)

According to the US Census in 2005, Bernalillo County attained an overall population of 592,570 or 31.95% of the state's total population. There were 144,124 children in the county in 2005; this represents 28.16% of the state's total children under 18. While the whole county accounts for **28.16%** of the state's total children under 18, Bernalillo County had **9.12%** of the state's total children in care as of December 31, 2007.

	Race and Ethnicity			
	Bernalillo <sup>1</sup>		Total Population <sup>2</sup>	
	Children Under 19 yrs	Children Under 19 yrs of Hispanic Origin	Bernalillo	New Mexico
Total Population	162,306	87,329	592,570	1,854,938
White	84.6%	93.6%	72.5%	66.8%
Black	3.8%	2.0%	2.8%	1.9%
American Indian or Alaskan Native	6.2%	2.1%	4.3%	9.5%
Asian	1.9%	0.5%	2.0%	1.1%
Native Hawaiian or Other Pacific Islander	0.1%	0.1%	20.0%	0.1%
Some other Race	3.3%	1.7%	14.9%	17.0%
Hispanic or Latino			44.3%	42.1%
Under 18 yrs			144,124	511,768
% of Families Living under the poverty Level			10.0%	14.5%

1. Source: U.S. Census Bureau, Population Division\Bureau of Business and Economic Research, Univ. of New Mexico.  
 2. Source: U.S. Census Bureau\State and County QuickFACTS

Children In Care End 12/31/07 Bernalillo West County		
HISPANIC	No	Yes
Percentage	35.7%	64.3%

RACE	Total	%
American Indian or Alaskan Native	30	1.22%
Black or African American	24	0.98%
White	170	6.92%

Source: SM0907



Age of Children in Care End 12/31/07													
County	< 1 yr		1 - 5 yrs		6 - 10 yrs		11 - 15 yrs		16 - 17 yrs		18+ yrs	Total	
	%	#	%	#	%	#	%	#	%	#			
<b>Bernalillo West</b>	4%	9	34%	76	27%	60	20%	45	9%	20	6%	13	224
<b>Region Total</b>	6%	32	37%	189	23%	117	18%	90	10%	51	5%	28	506
<b>State Total</b>	2%	49	34%	835	33%	810	21%	516	6%	147	4%	98	2,455

Source: SM0907

# BERNALILLO WEST COUNTY (REGION 3/ANGELINA UNALE-HALE COUNTY MANAGER)

## PROTECTIVE SERVICES REPORTS AND INVESTIGATIONS - QUARTER 2 SFY 08: OCTOBER - DECEMBER 2007

County	Accepted Reports	Investigations						County % of State Total Investigations <sup>1</sup>	Number of Children Victims	Victim Rate <sup>2</sup> per 1,000 children
		Substantiated		Unsubstantiated		Total Investigations				
Bernalillo West	1,119	94	13.7%	590	86.3%	684		15.5%	129	7.1
Region Total	1,119	179	13.8%	1,117	86.2%	1,296		29.4%	256	7.1
State Total	3,748	1,041	23.6%	3,362	76.4%	4,403		100.0%	1,589	12.4

Note: Not all "accepted reports" result in investigations completed during the period under review.

- Both County and Regional data are calculated as a % of the State's total investigations for the period under review.
- For the quarterly *360 Degrees* County Profiles Report this information is calculated by annualizing the quarterly data. For the SFY Annual *360 Degrees* County Profiles Report this information is calculated, based on four quarters of reported data.

Source: SM01a02 and SM06a01

**HOW ARE WE DOING?**  
By comparing "total investigations" for the quarter with "accepted reports" for the quarter, you can get a **sense** of work flow. To get a further sense of work flow, also review the cases with a "pending over 30 days" status and the case weight information for each county.

## CPS ALLEGATION TYPES OF CHILD MALTREATMENT - QUARTER 2 SFY 08: OCTOBER - DECEMBER 2007

County	Physical Abuse					Sexual Abuse					Physical Neglect					Totals				
	Total	Substantiated	Unsubstantiated	Total	Substantiated	Unsubstantiated	Total	Substantiated	Unsubstantiated	Total	Substantiated	Unsubstantiated	Total	Substantiated	Unsubstantiated					
Bernalillo West	503	41	8.2%	462	91.8%	58	3	5.2%	55	94.8%	1,102	144	13.1%	958	86.9%	1,663	188	11.3%	1,475	88.7%
Region Total	938	88	9.4%	850	90.6%	113	9	8.0%	104	92.0%	2,141	286	13.4%	1,855	86.6%	3,192	383	12.0%	2,809	88.0%
State Total	3,347	614	18.3%	2,733	81.7%	385	53	13.8%	332	86.2%	8,225	1,900	23.1%	6,325	76.9%	11,957	2,567	21.5%	9,390	78.5%

Note: In every investigation there may be multiple allegations of maltreatment for one or more children. In counties with small populations, very small numbers in any category may render suspect any data collected during the period under review.

Source: SM06a01



## PENDING INVESTIGATIONS: DECEMBER 2007

County	Reports Without An Investigation After 30 days		Pending Over 30 Days						Pending Less Than 30 Days		
	11/07	12/07	Baseline 11/04 Total	11/07 Total	12/07 Total	Priority Levels 12/07			Baseline 11/04 Total	11/07 Total	12/07 Total
						E	P1	P2			
Bernalillo West	0	1	910	328	266	23	59	184	162	183	124
Region Total	0	1	1368	556	434	33	88	313	340	357	247
State Total	3	2	4917	1614	1165	98	239	828	1296	1141	900

Source: SM06a01

# BERNALILLO WEST COUNTY (REGION 3/ANGELINA UNALE-HALE COUNTY MANAGER)

## CHILDREN IN AN OUT OF HOME PLACEMENT FOR MORE THAN TEN DAYS WITH AN INITIAL EPSDT<sup>1</sup> EXAMINATION 2ND QUARTER SFY 08



County	Children With Initial EPSDT Exam During Reporting Period		Children Without Initial EPSDT Exam During Reporting Period		Total Children in Out of Home Placement Greater Than 10 Days <sup>2</sup>	Children with Initial EPSDT Within 30 Days	
	#	%	#	%	#	#	%
Bernalillo West	16	57.1%	12	42.9%	28	11	39.3%
Region Total	30	51.7%	28	48.3%	58	24	41.4%
State Total	144	49.8%	145	50.2%	289	127	43.9%

1. EPSDT = Early and Periodic Screening, Diagnosis and Treatment Medicaid Medical Visits.
2. Report counts all children entering care during the parameter period and remaining in care more than 10 days.

Source: SM10a36

### ADOPTION AND ADOLESCENT RESOURCE TEAM -2ND QUARTER SFY 08

	ADOPTION MEASURES NOT ACHIEVED	Total Cases	Not Achieved as % of Total Cases
Bernalillo	4	310	1.3%
Region Total	4	310	1.3%
State Total	67	2,845	2.4%

### ADOPTION AND ADOLESCENT RESOURCE TEAM -2ND QUARTER SFY 08

	INDEPENDENT LIVING MEASURES NOT ACHIEVED	Total Cases	Not Achieved as % of Total Cases
Bernalillo	1	182	0.5%
Region Total	1	182	0.5%
State Total	27	1,125	2.4%

Source: JTS Database

### Permanency Worker Case Weights SM0904 December 2007 Monthly Report

County	Number of Children in Custody as of 12/31/07	Number of Permanency Worker Positions as of 12/31/07	Number of Children per Permanency Worker as of 12/07
Bernalillo West	226	18	12.6
State Total	519	37	14.0
Region Total	2,508	147.5	17.0

Source: December Monthly 2007 SM0904  
FTE Position Responsible for Permanency Planning  
Includes 110 Children w/No Plan

### Investigation Worker Case Weight Report CY 2007

	# of PS Investigation Worker Positions	Total # PS Accepted Reports 2007	Total # PS Completed Investigations 2006	Total # PS Completed Investigations 2007	% of Increase/Decrease in Investigations from CY06	Pending Investigation over 30 days 12/07	CY07 Avg Investigations Completed per Yr per worker	CY07 Avg Investigations Completed per Mo per worker
Bernalillo West	20.0	4,559	2,320	2,353	1.4%	266	117.7	9.8
State Total	39.0	4,559	4,402	4,618	4.9%	434	118.4	9.9
Region Total	132.5	15,424	16,116	16,005	-0.7%	1,065	120.8	10.1

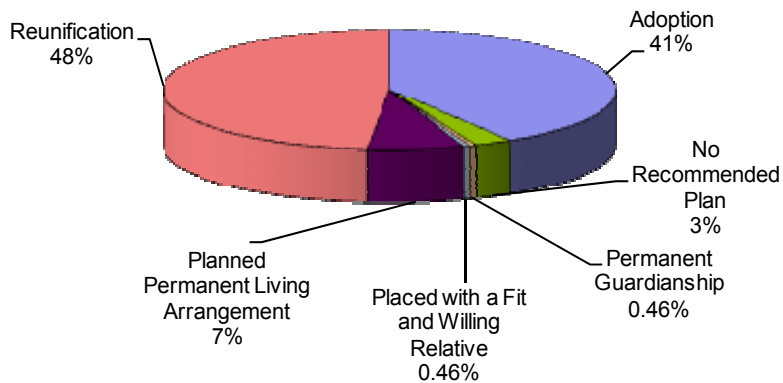
Source: SM01a02

# BERNALILLO WEST COUNTY (REGION 3/ANGELINA UNALE-HALE COUNTY MANAGER)

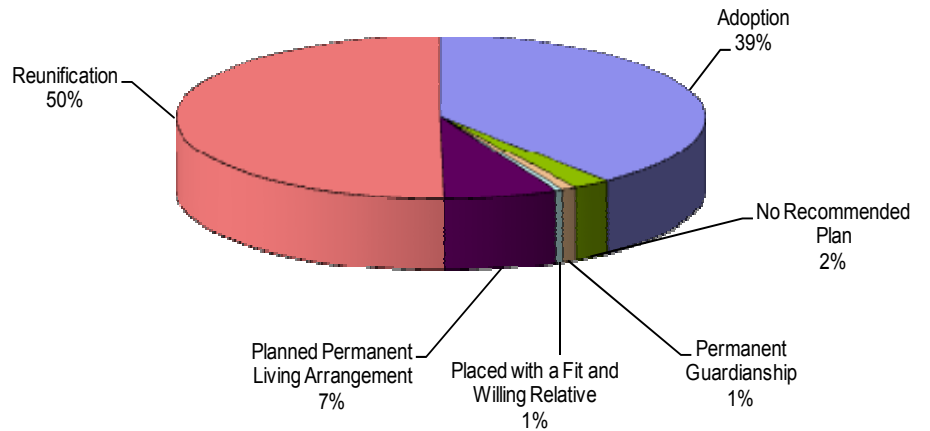
## POINT IN TIME MEASURES: DECEMBER 31, 2007

County Bernalillo West	Number	Region Total	State Total	% of State Total
<b>NUMBER OF CHILDREN IN CARE</b> (SM0907)	224	506	2,455	9.1%
• <b>AVERAGE LENGTH OF STAY IN FOSTER CARE (IN MONTHS - END QTR)</b> (SM0907)	59.1		21.3	
<b>NUMBER OF FOSTER CARE PROVIDERS</b> (PM02a01)	220	220	975	22.6%
<b>NUMBER OF ADOPTION PROVIDERS</b> (PM02a01)	279	279	1,427	19.6%
<b>NUMBER OF CHILDREN WITH A PLAN OF ADOPTION</b> (PM02a01)	90	191	935	9.6%
• <b>NUMBER CHILDREN FREED AND WAITING</b> (SM0907)	45	112	553	8.1%
• <b>NUMBER OF CHILDREN FREED AND WAITING (WITH RESOURCES)</b> (SM0803)	18	44	175	10.3%
• <b>NUMBER OF CHILDREN FREED AND WAITING (WITHOUT RESOURCES)</b> (SM0803)	27	68	378	7.1%
<b>PERMANENT PLAN LIVING ARRANGEMENT</b> (SM0904)	15	43	165	9.1%
<b>WORKER VISITS WITH CHILDREN IN CARE</b> (SM08-06)	<b>Coming Soon</b>			

**Permanency Plan Goals of Children in Custody**  
**Bernalillo West N = 219**  
**Point In Time December 31, 2007**  
 Source: SM0904



**Permanency Plan Goals of Children in Custody**  
**New Mexico N = 2381**  
**Point In Time December 31, 2007**  
 Source: SM0904



# BERNALILLO WEST COUNTY (REGION 3/ANGELINA UNALE-HALE COUNTY MANAGER)

## RECURRENCE OF SUBSTANTIATED MALTREATMENT WITHIN 6 MONTHS OF A PREVIOUSLY SUBSTANTIATED REPORT OF MALTREATMENT

County Bernalillo West	Total # of Maltreatment Victims	# With Recurrence	% With Recurrence
2nd Qtr SFY 08	84	2	2.4%
Region Total	179	16	8.9%
State Total	1,030	78	7.6%

Round 1 Federal National Standard = No more than 6.1%  
New Mexico SFY 08 Standard = No more than 7.0%

Source: SM0907

## CHILDREN REENTERING CARE WITHIN TWELVE MONTHS OF A PRIOR EPISODE

County Bernalillo West	Total Entering Care #	# Reentering Within 12 Months	% Reentering Within 12 Months
2nd Qtr SFY 08	47	6	12.8%
Region Total	102	15	14.7%
State Total	535	76	14.2%

Round 1 Federal National Standard = No More than 8.6%  
New Mexico SFY 08 Standard = No Standard

Source: SM0907

Note: SFY = State Fiscal Year. In New Mexico the State Fiscal year is July 1 through June 30 of the following year.

## CHILDREN MALTREATED IN FOSTER CARE (PERFORMANCE OVER A ROLLING 12 MONTHS)

County Bernalillo West	Total # of Chil- dren in Care	# Maltreated	% of Maltreated in Foster Care
2nd Qtr SFY 08	445	5	1.12%
Region Total	985	6	0.61%
State Total	4,700	24	0.51%

Round 1 Federal National Standard = No more than 0.57%  
New Mexico SFY08 State Standard = No more than 0.57%

Source: SM0907

## CHILDREN REUNIFIED IN LESS THAN TWELVE MONTHS OF ENTRY INTO CARE

County Bernalillo West	Total # Reunified	# Reunified less than 12 mos	% Reunified less than 12 mos
2nd Qtr SFY 08	25	24	96.0%
Region Total	55	46	83.6%
State Total	290	236	81.4%

Round 1 Federal National Standard = At or above 76.2%  
New Mexico SFY 08 State Standard = At or above 85.0%

Source: SM0907

## CHILDREN IN FOSTER CARE FOR UP TO 12 MONTHS WITH NO MORE THAN TWO PLACEMENT SETTING

County Bernalillo West	Total	# With Two or Fewer	% With Two or Fewer
2nd Qtr SFY 08	142	113	79.6%
Region Total	303	243	80.2%
State Total	1,448	1,163	80.3%

Round 1 Federal National Standard = At or Above 86.7%  
New Mexico SFY 08 Standard = At or Above 86.7%

Source: SM0907

## CHILDREN WITH A FINALIZED ADOPTION WITHIN 24 MONTHS OF ENTRY INTO CARE

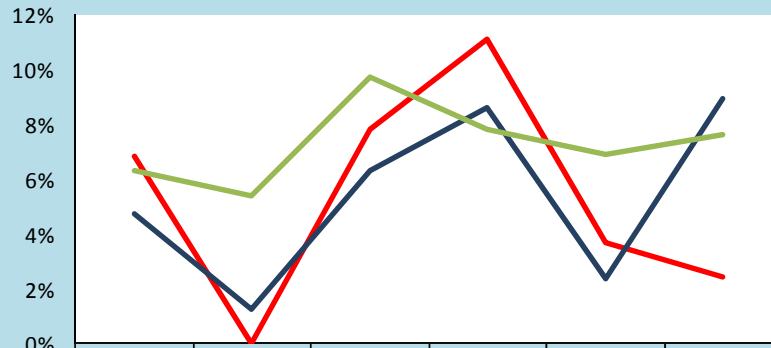
County Bernalillo West	Total # Adopted	# <24 mos.	% <24 mos.
2nd Qtr SFY 08	13	1	7.7%
Region Total	33	6	18.2%
State Total	101	26	25.7%

Round 1 Federal National Standard = at least 32.0%  
New Mexico SFY 08 Standard = At least 34.0%

Source: SM0907

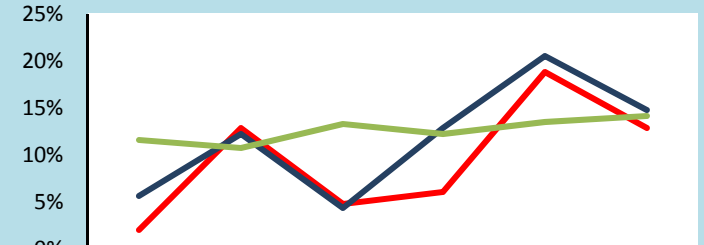
# BERNALILLO WEST COUNTY (REGION 3/ANGELINA UNALE-HALE COUNTY MANAGER)

**Trends of Recurrence of Substantiated Maltreatment Within 6 Months of a Previously Substantiated Report of Maltreatment**  
ACF National Standard = 6.1%



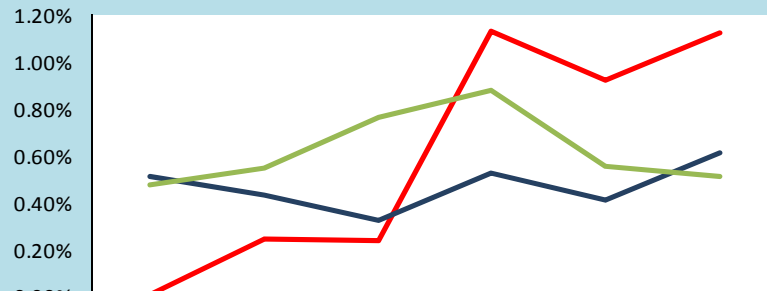
	Q1 SFY07	Q2 SFY07	Q3 SFY07	Q4 SFY07	Q1 SFY08	Q2 SFY08
Bernalillo West	6.8%	0.0%	7.8%	11.1%	3.7%	2.4%
Region Total	4.7%	1.2%	6.3%	8.6%	2.3%	8.9%
State Total	6.3%	5.4%	9.7%	7.8%	6.9%	7.6%

**Trends of Children Reentering Care within Twelve Months of a Prior Episode**  
ACF National Standard = 8.6%



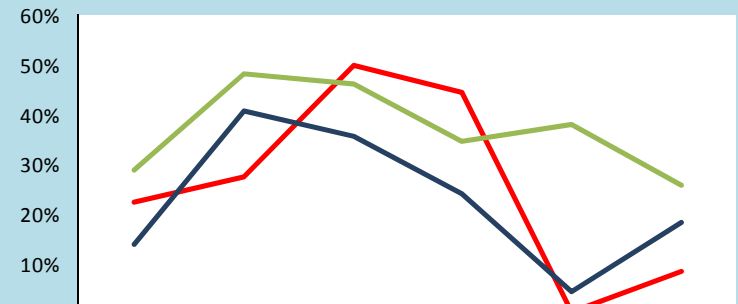
	Q1 SFY07	Q2 SFY07	Q3 SFY07	Q4 SFY07	Q1 SFY08	Q2 SFY08
Bernalillo West	2.0%	12.9%	4.7%	6.0%	18.8%	12.8%
Region Total	5.5%	12.1%	4.3%	12.8%	20.5%	14.7%
State Total	11.6%	10.6%	13.4%	12.1%	13.6%	14.2%

**Trends of Children Maltreated in Foster Care (performance over Rolling 12 Months)**  
ACF National Standard = 0.57%



	Yr Ending 09/30/06	Yr Ending 12/31/06	Yr Ending 04/31/07	Yr Ending 06/30/07	Yr Ending 09/30/07	Yr Ending 12/31/07
Bernalillo West	0.00%	0.24%	0.23%	1.13%	0.92%	1.12%
Region Total	0.51%	0.43%	0.32%	0.52%	0.41%	0.61%
State Total	0.47%	0.54%	0.76%	0.88%	0.55%	0.51%

**Trends of Children With a Finalized Adoption Within 24 Months of Entry Into Care**  
ACF National Standard = 32.0%



	Q1 SFY07	Q2 SFY07	Q3 SFY07	Q4 SFY07	Q1 SFY08	Q2 SFY08
Bernalillo West	22.2%	27.3%	50.0%	44.4%	0.0%	8.3%
Region Total	13.6%	40.7%	35.7%	24.0%	4.0%	18.2%
State Total	28.8%	48.2%	46.3%	34.4%	38.0%	25.7%

Note: The reader should note that in the instance of existing children maltreated in Foster Care, cases are carried forward in the calculation for 12 rolling months. Thus trend data will display the existing cases for 12 consecutive months. For this reason elevated levels across multiple quarter may not indicate new cases for this measure.