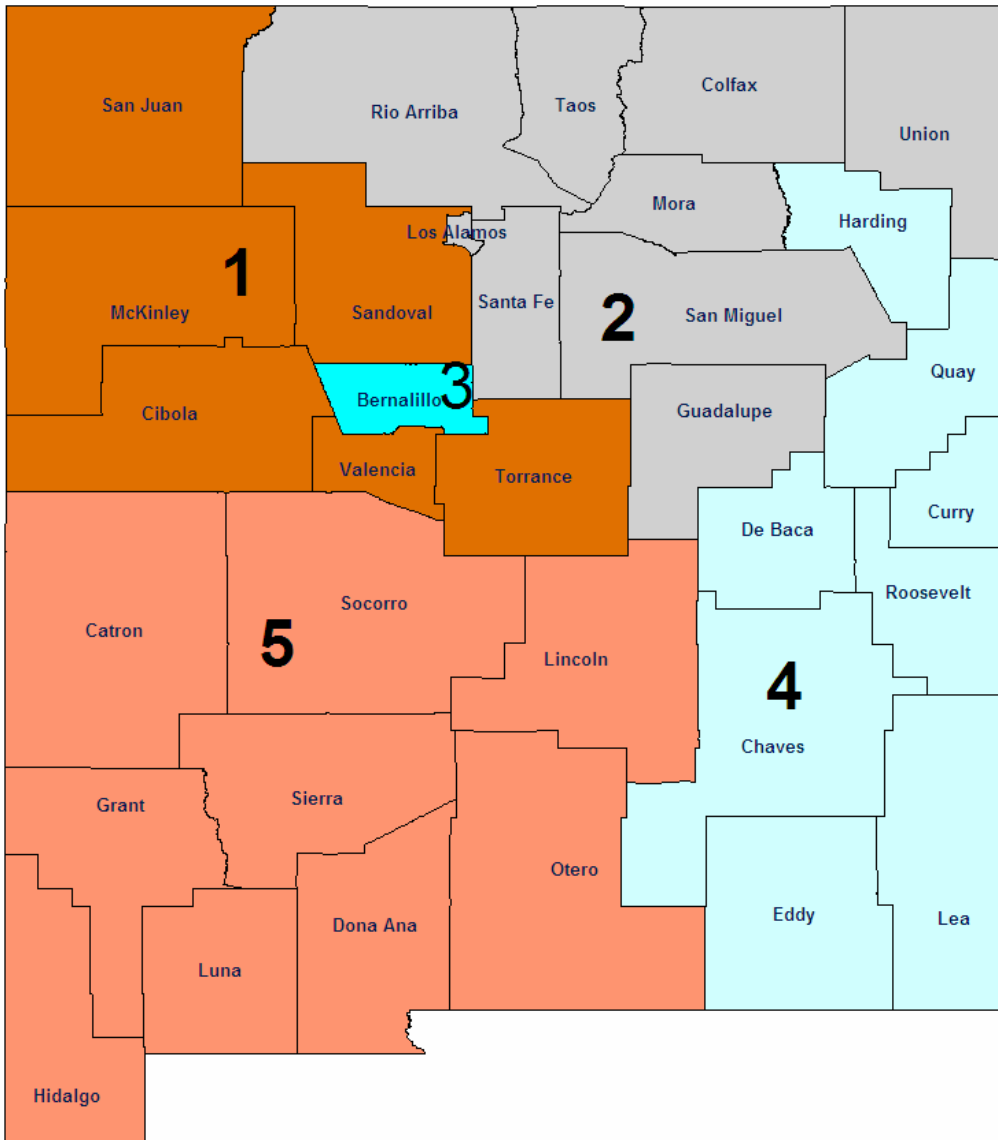


Protective Services *360 Degrees* County Profiles



Protective Services Director's Office
 (505) 827-8400 www.cyfd.org

Angela Adams, Director
 Maryellen Bearzi Administrative Deputy Director

Francine Anaya, Clinical Deputy Director
 (505) 758-8871

Region 1

David Montoya (505)867-2373

Region 2

Linda McNall (505)827-7450

Region 4

Don Holden (505)356-6688

Region 5

Nick Dagonas (505)524-6400

Lisa Madrid-Schleicher, (Acting) Clinical Deputy Director
 (505) 841-7800

Region 3

Michelle Herrera, (Acting) (505)841-8400





Protective Services Initiatives

- To continue efforts ensuring timely response to reports of maltreatment, enhancing voluntary services to at risk families, providing safe homes for children in out-of-home care, and working with families to address the risk issues that contribute to child maltreatment
- To improve outcomes addressing the unique need of older youth in faster care in the areas of education, financial assistance and housing
- To enhance visitation with children in foster care through staff training, tracking mechanisms and quality assurance reviews
- To expand foster and adoptive family recruitment efforts to increasing the number of placement resources available for children needing homes
- To partner with the New Mexico Court Improvement Project and the courts to expedite permanency for children by reducing delays, minimizing the need for continuances, expediting appeals and enhancing the quality of representation
- To facilitate the active engagement of parents, foster parents and youth in case planning through Team Decision Making, adoption mediation, video conference and increasing the participation of incarcerated parents

Children, Youth and Families

Vision

The Children, Youth and Families Department partners with communities to strengthen families in New Mexico to be productive and self-sufficient.

Mission

CYFD believes in the strengths and resiliency of families who are our partners and for whom we advocate to enhance their safety and well-being. We respectfully serve and support children and families and supervise youth in responsive, community-based system of care that is client-centered, family-focused and culturally competent.



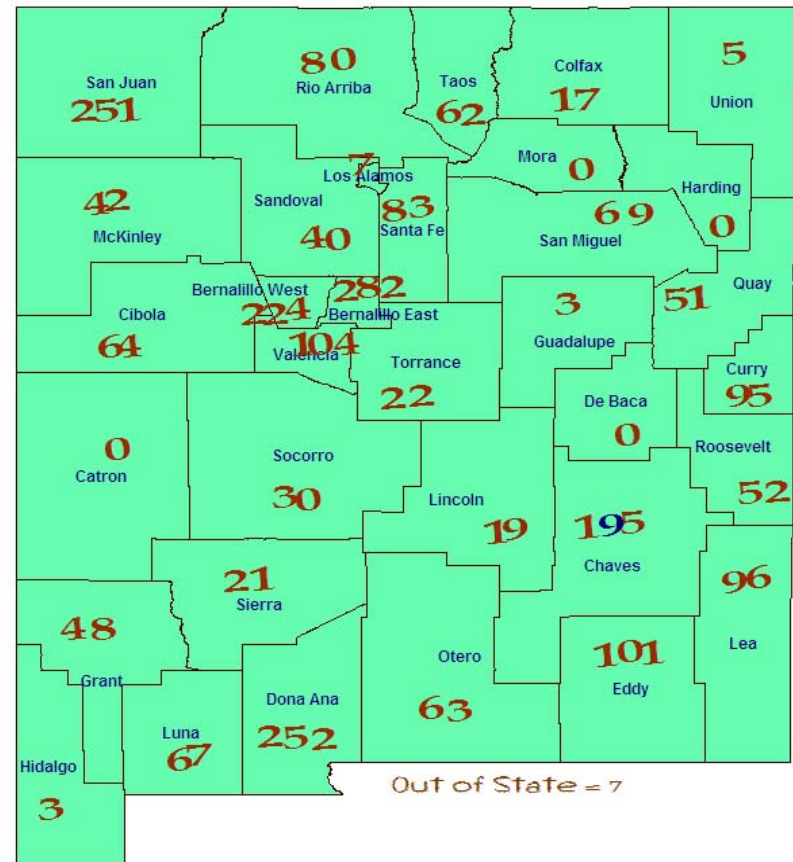
Did You Know???

Protective Services
Children In Care
As of December 31, 2007

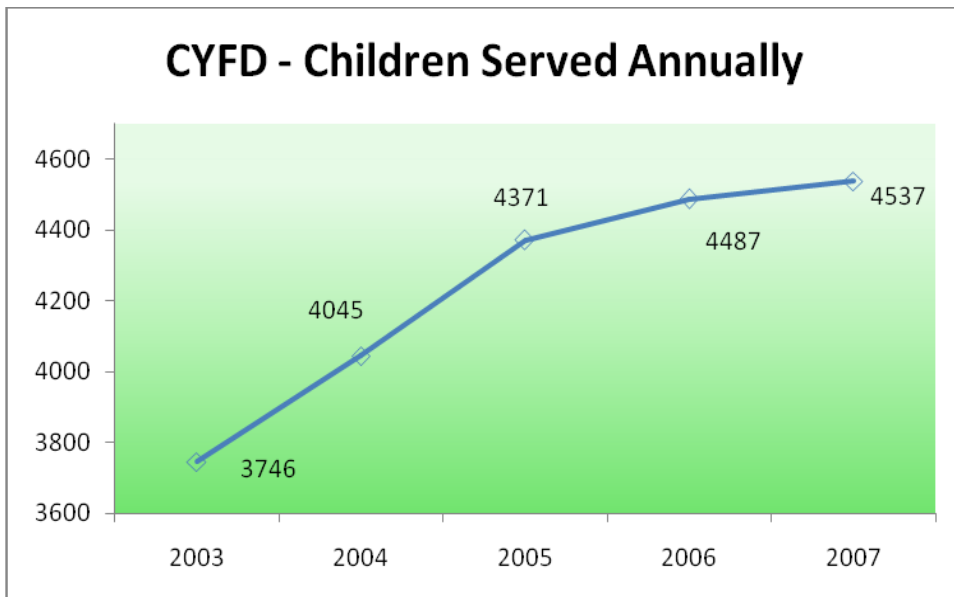
Did You Know?

Based on the December 31, 2007 point in time calculation, there were **2,455** children and **975** foster care providers. New Mexico needs more foster care providers, especially in rural areas. For more information on fostering a New Mexico child go to: www.cyfd.org/foster.html.

For the year ending December 31, 2007 there were a total of **4,537** served by the child welfare system in New Mexico. Since 2003 there has been a **21%** increase in the total children served annually, indicating a growing pressure on the entire child welfare system.



Source: SM0907



Source: SM0907

CIBOLA COUNTY (REGION 1/GEORGIA SANCHEZ COUNTY MANGER)

According to the US Census in 2005, Cibola County attained an overall population of 25,595 or 1.43% of the state's total population. There were 7,845 children in the county in 2005; this represents 1.5% of the state's total children under 18. While the whole county accounts for **1.5%** of the state's total children under 18, Cibola County had **2.61%** of the state's total children in care as of December 31, 2007.

	Race and Ethnicity			
	Cibola ¹		Total Population ²	
	Children Under 19 yrs	Children Under 19 yrs of Hispanic Origin	Cibola	New Mexico
Total Population	8,304	2,737	25,595	1,854,938
White	45.6%	90.1%	39.6%	66.8%
Black	1.0%	1.4%	1.0%	1.9%
American Indian or Alaskan Native	51.8%	7.0%	40.3%	9.5%
Asian	0.0%	0.1%	0.4%	1.1%
Native Hawaiian or Other Pacific Islander	0.0%	0.1%	0.1%	0.1%
Some other Race	1.1%	1.0%	15.4%	17.0%
Hispanic or Latino			33.4%	42.1%
Under 18 yrs			7,845	511,768
% of Families Living under the poverty Level			21.5%	14.5%

1. Source: U.S. Census Bureau, Population Division/Bureau of Business and Economic Research, Univ. of New Mexico.
 2. Source: U.S. Census Bureau/State and County QuickFACTS

Children In Care End 12/31/07 Cibola County		
HISPANIC	No	Yes
Percentage	57.8%	42.2%
RACE	Total	%
American Indian or Alaskan Native	37	1.51%
Black or African American	1	0.04%
White	26	1.06%

Source: SM0907



Age of Children in Care End 12/31/07													
County	< 1 yr		1 - 5 yrs		6 - 10 yrs		11 - 15 yrs		16 - 17 yrs		18+ yrs		Total
	%	#	%	#	%	#	%	#	%	#	%	#	
Cibola	3%	2	40%	26	21%	13	23%	15	8%	5	5%	3	64
Region Total	7%	36	31%	164	70%	115	18%	95	14%	74	7%	38	522
State Total	2%	49	34%	835	33%	810	21%	516	6%	147	4%	98	2,455

Source: SM0907

CIBOLA COUNTY (REGION 1/GEORGIA SANCHEZ COUNTY MANGER)

PROTECTIVE SERVICES REPORTS AND INVESTIGATIONS - QUARTER 2 SFY 08: OCTOBER - DECEMBER 2007

County	Accepted Reports	Investigations						Victim Rate ² per 1,000 children	
		Substantiated	Unsubstantiated	Total Investigations	County % of State Total Investigations ¹	Number of Children Victims			
Cibola	53	24	55.8%	19	44.2%	43	1.0%	36	18.4
Region Total	710	303	27.8%	786	72.2%	1,089	24.7%	452	14.5
State Total	3,748	1,041	23.6%	3,362	76.4%	4,403	100.0%	1,589	12.4

Note: Not all "accepted reports" result in investigations completed during the period under review.

- Both County and Regional data are calculated as a % of the State's total investigations for the period under review.
- For the quarterly *360 Degrees* County Profiles Report this information is calculated by annualizing the quarterly data. For the SFY Annual *360 Degrees* County Profiles Report this information is calculated, based on four quarters of reported data.

Source: SM01a02 and SM06a01

HOW ARE WE DOING?
By comparing "total investigations" for the quarter with "accepted reports" for the quarter, you can get a **sense** of work flow. To get a further sense of work flow, also review the cases with a "pending over 30 days" status and the case weight information for each county.

CPS ALLEGATION TYPES OF CHILD MALTREATMENT - QUARTER 2 SFY 08: OCTOBER - DECEMBER 2007

County	Physical Abuse					Sexual Abuse					Physical Neglect					Totals				
	Total	Substantiated	Unsubstantiated	Total	Substantiated	Unsubstantiated	Total	Substantiated	Unsubstantiated	Total	Substantiated	Unsubstantiated	Total	Substantiated	Unsubstantiated					
Cibola	27	14	51.9%	13	48.1%	8	7	87.5%	1	12.5%	71	29	40.8%	42	59.2%	106	50	47.2%	56	52.8%
Region Total	888	210	23.6%	678	76.4%	106	15	14.2%	91	85.8%	2,022	473	23.4%	1,549	76.6%	3,016	698	23.1%	2,318	76.9%
State Total	3,347	614	18.3%	2,733	81.7%	385	53	13.8%	332	86.2%	8,225	1,900	23.1%	6,325	76.9%	11,957	2,567	21.5%	9,390	78.5%

Note: In every investigation there may be multiple allegations of maltreatment for one or more children. In counties with small populations, very small numbers in any category may render suspect any data collected during the period under review.

Source: SM06a01



PENDING INVESTIGATIONS: DECEMBER 2007

County	Reports Without An Investigation After 30 days		Pending Over 30 Days						Pending Less Than 30 Days		
	11/07	12/07	Baseline 11/04 Total	11/07 Total	12/07 Total	Priority Levels 12/07			Baseline 11/04 Total	11/07 Total	12/07 Total
						E	P1	P2			
Cibola	0	0	11	44	42	6	11	25	15	14	16
Region Total	0	0	1,297	389	217	18	50	149	286	186	169
State Total	3	2	4,917	1,614	1,165	98	239	828	1,296	1,141	900

Source : SM06a01

CIBOLA COUNTY (REGION 1/GEORGIA SANCHEZ COUNTY MANGER)

CHILDREN IN AN OUT OF HOME PLACEMENT FOR MORE THAN TEN DAYS WITH AN INITIAL EPSDT¹ EXAMINATION 2ND QUARTER SFY 08



County	Children With Initial EPSDT Exam During Reporting Period		Children Without Initial EPSDT Exam During Reporting Period		Total Children in Out of Home Placement Greater Than 10 Days ²	Children with Initial EPSDT Within 30 Days	
	#	%	#	%	#	#	%
Cibola	5	71.4%	2	28.6%	7	5	71.4%
Region Total	19	38.0%	31	62.0%	50	16	32.0%
State Total	144	49.8%	145	50.2%	289	127	43.9%

1. EPSDT = Early and Periodic Screening, Diagnosis and Treatment Medicaid Medical Visits.
2. Report counts all children entering care during the parameter period and remaining in care more than 10 days.

Source: SM10a36

ADOPTION AND ADOLESCENT RESOURCE TEAM –2ND QUARTER SFY 08

	ADOPTION MEASURES NOT ACHIEVED	Total Cases	Not Achieved as % of Total Cases
Cibola	4	129	3.1%
Region Total	27	876	3.1%
State Total	67	2,845	2.4%

ADOPTION AND ADOLESCENT RESOURCE TEAM –2ND QUARTER SFY 08

	INDEPENDENT LIVING MEASURES NOT ACHIEVED	Total Cases	Not Achieved as % of Total Cases
Cibola	6	43	14.0%
Region Total	16	266	6.0%
State Total	27	1,125	2.4%

Source: JTS Database

Permanency Worker Case Weights SM0904 December 2007 Monthly Report

County	Number of Children in Custody as of 12/31/07	Number of Permanency Worker Positions as of 12/31/07	Number of Children per Permanency Worker as of 12/07
Cibola	75	3.5	21.4
State Total	554	30.5	18.2
Region Total	2,508	147.5	17.0

Source: December Monthly 2007 SM0904
FTE Position Responsible for Permanency Planning
Includes 110 Children w/No Plan

Investigation Worker Case Weights Report CY 2007

	# of PS Investigation Worker Positions	Total # PS Accepted Reports 2007	Total # PS Completed Investigations 2006	Total # PS Completed Investigations 2007	% of Increase/Decrease in Investigations from CY06	Pending Investigation over 30 days 12/07	CY07 Avg Investigations Completed per Yr per worker	CY07 Avg Investigations Completed per Mo per worker
Cibola	2.5	213	231	172	-25.5%	42	68.8	5.7
State Total	26.5	2,992	3,275	3,394	3.6%	217	128.1	10.7
Region Total	132.5	15,424	16,116	16,005	-0.7%	1,065	120.8	10.1

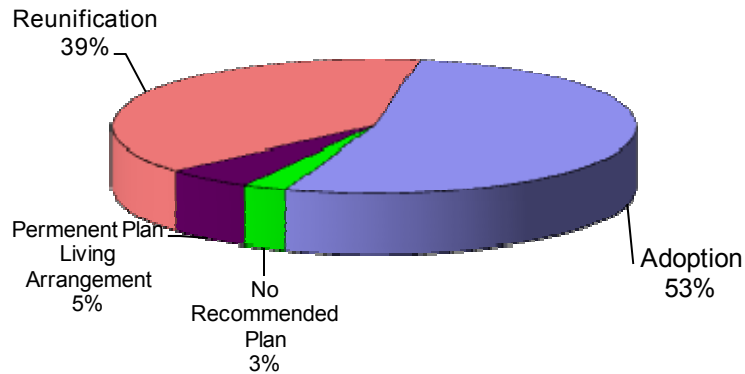
Source: SM01a02

CIBOLA COUNTY (REGION 1/GEORGIA SANCHEZ COUNTY MANGER)

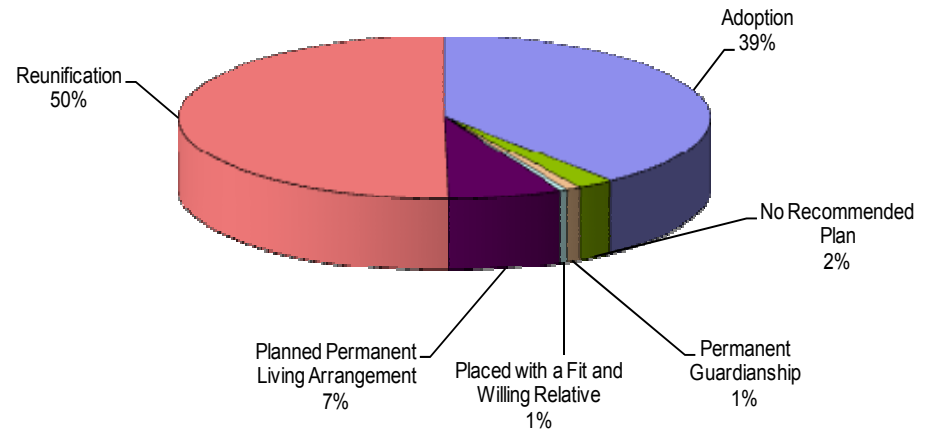
POINT IN TIME MEASURES: DECEMBER 31, 2007

County Cibola	Number	Region Total	State Total	% of State Total
NUMBER OF CHILDREN IN CARE (SM0907)	64	523	2,455	2.61%
• AVERAGE LENGTH OF STAY IN FOSTER CARE (IN MONTHS - END QTR) (SM0907)	21.9		21.3	
NUMBER OF FOSTER CARE PROVIDERS (PM02a01)	13	181	975	1.33%
NUMBER OF ADOPTION PROVIDERS (PM02a01)	7	177	1,427	0.49%
NUMBER OF CHILDREN WITH A PLAN OF ADOPTION (PM02a01)	39	241	935	4.17%
• NUMBER CHILDREN FREED AND WAITING (SM0907)	11	105	553	1.99%
• NUMBER OF CHILDREN FREED AND WAITING (WITH RESOURCES) (SM0803)	2	31	175	1.14%
• NUMBER OF CHILDREN FREED AND WAITING (WITHOUT RESOURCES) (SM0803)	9	74	378	2.38%
PERMANENT PLAN LIVING ARRANGEMENT (SM0904)	4	21	195	2.05%
WORKER VISITS WITH CHILDREN IN CARE (SM08-06)	Coming Soon			

**Permanency Plan Goals of Children in Custody
Cibola County N = 74
Point in Time December 31, 2007
Source: SM0904**



**Permanency Plan Goals of Children in Custody
New Mexico N = 2381
Point in Time December 31, 2007
Source: SM0904**



CIBOLA COUNTY (REGION 1/GEORGIA SANCHEZ COUNTY MANGER)

RECURRENCE OF SUBSTANTIATED MALTREATMENT WITHIN 6 MONTHS

OF A PREVIOUSLY SUBSTANTIATED REPORT OF MALTREATMENT

County Cibola	Total # of Maltreatment Victims	# With Recurrence	% With Recurrence
2nd Qtr SFY 08	4	0	0.0%
Region Total	260	15	5.8%
State Total	1,030	78	7.6%

Round 1 Federal National Standard = No more than 6.1%
New Mexico SFY 08 Standard = No more than 7.0%

Source: SM0907

CHILDREN REENTERING CARE WITHIN TWELVE MONTHS OF A PRIOR EPISODE

County Cibola	Total Entering Care #	# Reentering Within 12 Months	% Reentering Within 12 Months
2nd Qtr SFY 08	10	0	0.0%
Region Total	114	16	14.0%
State Total	535	76	14.2%

Round 1 Federal National Standard = No More than 8.6%
New Mexico SFY 08 Standard = No Standard

Source: SM0907

Note: SFY = State Fiscal Year. In New Mexico the State Fiscal year is July 1 through June 30 of the following year.

CHILDREN MALTREATED IN FOSTER CARE (PERFORMANCE OVER A ROLLING 12 MONTHS)

County Cibola	Total # of Children in Care	# Maltreated	% of Maltreated in Foster Care
2nd Qtr SFY 08	82	0	0.00%
Region Total	899	2	0.22%
State Total	4,700	24	0.51%

Round 1 Federal National Standard = No more than 0.57%
New Mexico SFY08 State Standard = No more than 0.57%

Source: SM0907

CHILDREN REUNIFIED IN LESS THAN TWELVE MONTHS OF ENTRY INTO CARE

County Cibola	Total # Reunified	# Reunified less than 12 mos	% Reunified less than 12 mos
2nd Qtr SFY 08	0	0	0.0%
Region Total	68	56	82.4%
State Total	290	236	81.4%

Round 1 Federal National Standard = At or above 76.2%
New Mexico SFY 08 State Standard = At or above 85.0%

Source: SM0907

CHILDREN IN FOSTER CARE FOR UP TO 12 MONTHS WITH NO MORE THAN TWO PLACEMENT SETTING

County Cibola	Total	# With Two or Fewer	% With Two or Fewer
2nd Qtr SFY 08	22	22	100.0%
Region Total	280	235	83.9%
State Total	1,448	1,163	80.3%

Round 1 Federal National Standard = At or Above 86.7%
New Mexico SFY 08 Standard = At or Above 86.7%

Source: SM0907

CHILDREN WITH A FINALIZED ADOPTION WITHIN 24 MONTHS OF ENTRY INTO CARE

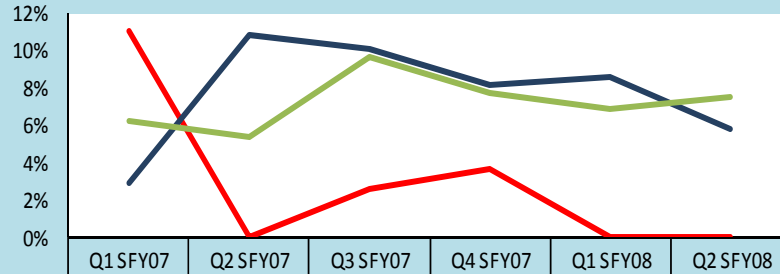
County Cibola	Total # Adopted	# <24 mos.	% <24 mos.
2nd Qtr SFY 08	0	0	0.0%
Region Total	6	2	33.3%
State Total	101	26	25.7%

Round 1 Federal National Standard = at least 32.0%
New Mexico SFY 08 Standard = At least 34.0%

Source: SM0907

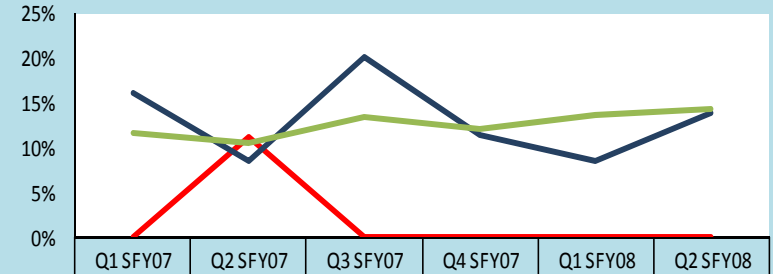
CIBOLA COUNTY (REGION 1/GEORGIA SANCHEZ COUNTY MANGER)

Trends of Recurrence of Substantiated Maltreatment Within 6 Months of a Previously Substantiated Report of Maltreatment
ACF National Standard = 6.1%



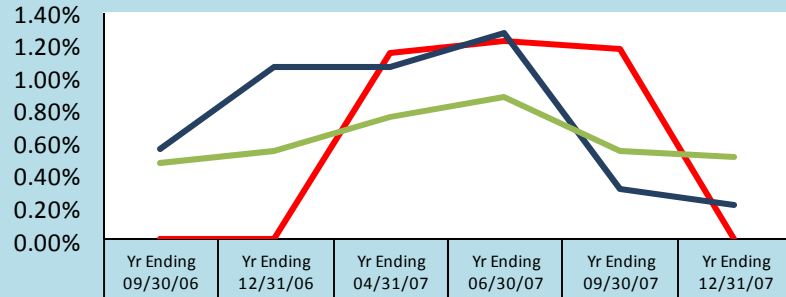
Cibola	11.1%	0.0%	2.6%	3.7%	0.0%	0.0%
Region Total	2.9%	10.8%	10.0%	8.1%	8.6%	5.8%
State Total	6.3%	5.4%	9.7%	7.8%	6.9%	7.6%

Trends of Children Reentering Care within Twelve Months of A Prior Episode
ACF National Standard = 8.6%



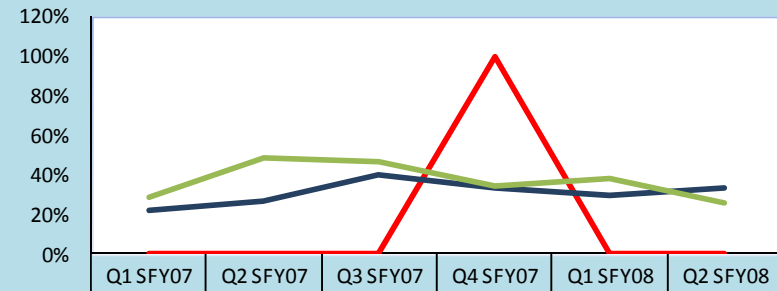
Cibola	0.0%	11.1%	0.0%	0.0%	0.0%	0.0%
Region Total	16.1%	8.5%	20.2%	11.5%	8.6%	14.0%
State Total	11.6%	10.6%	13.4%	12.1%	13.6%	14.2%

Trends of Children Maltreated in Foster Care (performance over Rolling 12 Months)
ACF National Standard = 0.57%



Cibola	0.00%	0.00%	1.16%	1.23%	1.18%	0.00%
Region Total	0.57%	1.07%	1.07%	1.28%	0.32%	0.22%
State Total	0.47%	0.54%	0.76%	0.88%	0.55%	0.51%

Trends of Children With a Finalized Adoption Within 24 Months of Entry Into Care
ACF National Standard = 32.0%



Cibola	0.0%	0.0%	0.0%	100.0%	0.0%	0.0%
Region Total	22.2%	27.3%	40.0%	33.3%	30.0%	33.3%
State Total	28.8%	48.2%	46.3%	34.4%	38.0%	25.7%

Note: The reader should note that in the instance of existing children maltreated in Foster Care, cases are carried forward in the calculation for 12 rolling months. Thus trend data will display the existing cases for 12 consecutive months. For this reason elevated levels across multiple quarter may not indicate new cases for this measure.

MCKINLEY COUNTY (REGION 1/JOLENE NATEWA COUNTY MANAGER)

According to the US Census in 2005 McKinley, County attained an overall population of 74,798 or 4.00% of the state's total population. There were 28,411 children in the county in 2005; this represents 5.6 % of the state's total children under 18. While the whole county accounts for **5.6%** of the state's total children under 18, McKinley County had **1.71%** of the state's total children in care as of December 31, 2007.

	Race and Ethnicity			
	McKinley ¹		Total Population ²	
	Children Under 19 yrs	Children Under 19 yrs of Hispanic Origin	McKinley	New Mexico
Total Population	27,647	3,071	74,798	1,854,938
White	14.2%	67.9%	16.4%	66.8%
Black	0.5%	1.4%	0.4%	1.9%
American Indian or Alaskan Native	83.7%	28.1%	74.7%	9.5%
Asian	0.0%	0.1%	0.5%	1.1%
Native Hawaiian or Other Pacific Islander	0.0%	0.1%	0.0%	0.1%
Some other Race	1.4%	2.2%	5.5%	17.0%
Hispanic or Latino			12.5%	42.1%
Under 18 yrs			28,411	511,768
% of Families Living under the poverty Level			31.9%	14.5%

1. Source: U.S. Census Bureau, Population Division\Bureau of Business and Economic Research, Univ. of New Mexico.
 2. Source: U.S. Census Bureau\State and County QuickFACTS

Children In Care End 12/31/07 McKinley County		
HISPANIC	No	Yes
Percentage	59.5%	40.5%

RACE	Total	%
American Indian or Alaskan Native	36	1.47%
White	6	0.24%

Source: SM0907



Age of Children in Care End 12/31/07													
County	< 1 yr		1 - 5 yrs		6 - 10 yrs		11 - 15 yrs		16 - 17 yrs		18+ yrs		Total
	%	#	%	#	%	#	%	#	%	#	%	#	
McKinley	5%	2	33%	14	38%	16	13%	5	5%	2	5%	2	42
Region Total	7%	36	31%	164	70%	115	18%	95	14%	74	7%	38	522
State Total	2%	49	34%	835	33%	810	21%	516	6%	147	4%	98	2,455

Source: SM0907

MCKINLEY COUNTY (REGION 1/JOLENE NATEWA COUNTY MANAGER)

PROTECTIVE SERVICES REPORTS AND INVESTIGATIONS - QUARTER 2 SFY 08: OCTOBER - DECEMBER 2007

County	Accepted Reports	Investigations						County % of State Total Investigations ¹	Number of Children Victims	Victim Rate ² per 1,000 children
		Substantiated		Unsubstantiated		Total Investigations				
McKinley	81	29	55.8%	23	44.2%	52	1.2%	54	7.6	
Region Total	710	303	27.8%	786	72.2%	1,089	24.7%	452	14.5	
State Total	3,748	1,041	23.6%	3,362	76.4%	4,403	100.0%	1,589	12.4	

Note: Not all "accepted reports" result in investigations completed during the period under review.

- Both County and Regional data are calculated as a % of the State's total investigations for the period under review.
- For the quarterly *360 Degrees* County Profiles Report this information is calculated by annualizing the quarterly data. For the SFY Annual *360 Degrees* County Profiles Report this information is calculated, based on four quarters of reported data.

Source: SM01a02 and SM06a01

HOW ARE WE DOING?
By comparing "total investigations" for the quarter with "accepted reports" for the quarter, you can get a **sense** of work flow. To get a further sense of work flow, also review the cases with a "pending over 30 days" status and the case weight information for each county.

CPS ALLEGATION TYPES OF CHILD MALTREATMENT - QUARTER 2 SFY 08: OCTOBER - DECEMBER 2007

County	Physical Abuse					Sexual Abuse					Physical Neglect				Totals					
	Total	Substantiated	Unsubstantiated	Total	Substantiated	Unsubstantiated	Total	Substantiated	Unsubstantiated	Total	Substantiated	Unsubstantiated	Total	Substantiated	Unsubstantiated					
McKinley	49	25	51.0%	24	49.0%	7	1	14.3%	6	85.7%	96	56	58.3%	40	41.7%	152	82	53.9%	70	46.1%
Region Total	888	210	23.6%	678	76.4%	106	15	14.2%	91	85.8%	2,022	473	23.4%	1,549	76.6%	3,016	698	23.1%	2,318	76.9%
State Total	3,347	614	18.3%	2,733	81.7%	385	53	13.8%	332	86.2%	8,225	1900	23.1%	6,325	76.9%	11,957	2,567	21.5%	9,390	78.5%

Note: In every investigation there may be multiple allegations of maltreatment for one or more children. In counties with small populations, very small numbers in any category may render suspect any data collected during the period under review.

Source: SM06a01



PENDING INVESTIGATIONS: DECEMBER 2007

County	Reports Without An Investigation After 30 days		Pending Over 30 Days						Pending Less Than 30 Days		
	11/07	12/07	Baseline 11/04 Total	11/07 Total	12/07 Total	Priority Levels 12/07			Baseline 11/04 Total	11/07 Total	12/07 Total
						E	P1	P2			
McKinley	0	0	46	39	52	4	10	38	37	20	26
Region Total	0	0	1,297	389	217	18	50	149	286	186	169
State Total	3	2	4,917	1,614	1,165	98	239	828	1,296	1,141	900

Source: SM06a01

MCKINLEY COUNTY (REGION 1/JOLENE NATEWA COUNTY MANAGER)



CHILDREN IN AN OUT OF HOME PLACEMENT FOR MORE THAN TEN DAYS WITH AN INITIAL EPSDT¹ EXAMINATION 2ND QUARTER SFY 08

County	Children With Initial EPSDT Exam During Reporting Period		Children Without Initial EPSDT Exam During Reporting Period		Total Children in Out of Home Placement Greater Than 10 Days ²	Children with Initial EPSDT Within 30 Days	
	#	%	#	%	#	#	%
McKinley	0	0.0%	11	100.0%	11	0	0.0%
Region Total	19	38.0%	31	62.0%	50	16	32.0%
State Total	144	49.8%	145	50.2%	289	127	43.9%

1. EPSDT = Early and Periodic Screening, Diagnosis and Treatment Medicaid Medical Visits.

2. Report counts all children entering care during the parameter period and remaining in care more than 10 days.

Source: SM10a36

ADOPTION AND ADOLESCENT RESOURCE TEAM –2ND QUARTER SFY 08

	ADOPTION MEASURES NOT ACHIEVED	Total Cases	Not Achieved as % of Total Cases
McKinley	9	96	9.4%
Region Total	27	876	3.1%
State Total	67	2,845	2.4%

ADOPTION AND ADOLESCENT RESOURCE TEAM –2ND QUARTER SFY 08

	INDEPENDENT LIVING MEASURES NOT ACHIEVED	Total Cases	Not Achieved as % of Total Cases
McKinley	2	17	11.8%
Region Total	16	266	6.0%
State Total	27	1,125	2.4%

Source: JTS Database

Permanency Worker Case Weights SM0904 December 2007 Monthly Report

County	Number of Children in Custody as of 12/31/07	Number of Permanency Worker Positions as of 12/31/07	Number of Children per Permanency Worker as of 12/07
McKinley	47	3	15.7
State Total	554	30.5	18.2
Region Total	2,508	147.5	17.0

Source: December Monthly 2007 SM0904

FTE Position Responsible for Permanency Planning
Includes 110 Children w/No Plan

Investigation Worker Case Weight Report CY 2007

County	# of PS Investigation Worker Positions	Total # PS Accepted Reports 2007	Total # PS Completed Investigations 2006	Total # PS Completed Investigations 2007	% of Increase/Decrease in Investigations from CY06	Pending Investigation over 30 days 12/07	CY07 Avg Investigations Completed per Yr per worker	CY07 Avg Investigations Completed per Mo per worker
McKinley	4.0	323	398	301	-24.4%	52	75.3	6.3
State Total	26.5	2,992	3,275	3,394	3.6%	217	128.1	10.7
Region Total	132.5	15,424	16,116	16,005	-0.7%	1,065	120.8	10.1

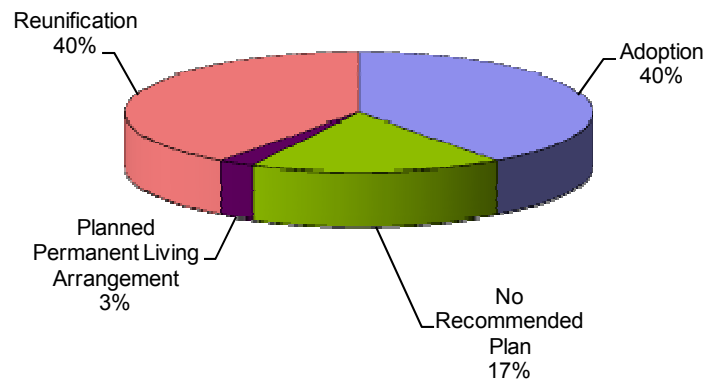
Source: SM01a02

MCKINLEY COUNTY (REGION 1/JOLENE NATEWA COUNTY MANAGER)

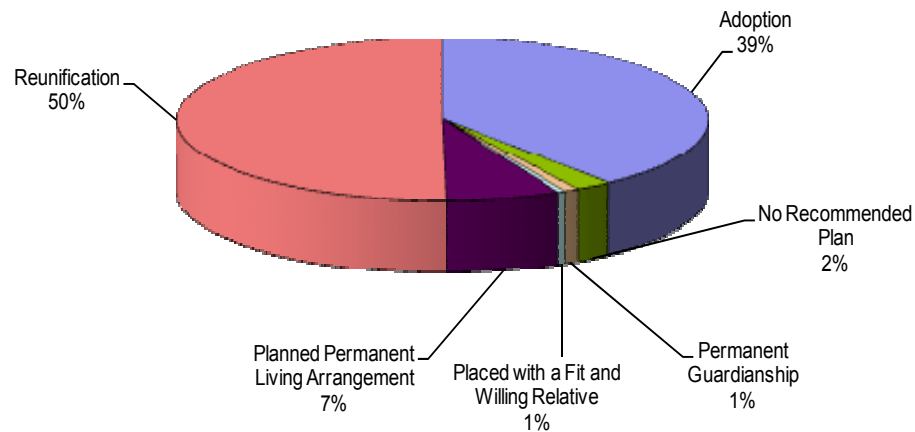
POINT IN TIME MEASURES: DECEMBER 31, 2007

County McKinley	Number	Region Total	State Total	% of State Total
NUMBER OF CHILDREN IN CARE (SM0907)	42	523	2,455	1.71%
• AVERAGE LENGTH OF STAY IN FOSTER CARE (IN MONTHS - END QTR) (SM0907)	47.8		21.3	
NUMBER OF FOSTER CARE PROVIDERS (PM02a01)	17	181	975	1.74%
NUMBER OF ADOPTION PROVIDERS (PM02a01)	11	177	1,427	0.77%
NUMBER OF CHILDREN WITH A PLAN OF ADOPTION (PM02a01)	16	241	935	1.71%
• NUMBER CHILDREN FREED AND WAITING (SM0907)	0	105	553	0.00%
• NUMBER OF CHILDREN FREED AND WAITING (WITH RESOURCES) (SM0803)	0	31	175	0.00%
• NUMBER OF CHILDREN FREED AND WAITING (WITHOUT RESOURCES) (SM0803)	0	74	378	0.00%
PERMANENT PLAN LIVING ARRANGEMENT (SM0904)	1	21	165	0.61%
WORKER VISITS WITH CHILDREN IN CARE (SM08-06)	Coming Soon			

**Permanency Plan Goals of Children in Custody
McKinley County N = 40
Point In Time December 31, 2007**
Source: SM0904



**Permanency Plan Goals of Children in Custody
New Mexico N = 2381
Point In Time December 31, 2007**
Source: SM0904



MCKINLEY COUNTY (REGION 1/JOLENE NATEWA COUNTY MANAGER)

RECURRENCE OF SUBSTANTIATED MALTREATMENT WITHIN 6 MONTHS

OF A PREVIOUSLY SUBSTANTIATED REPORT OF MALTREATMENT

County McKinley	Total # of Maltreatment Victims	# With Recurrence	% With Recurrence
2nd Qtr SFY 08	34	4	11.8%
Region Total	260	15	5.8%
State Total	1,030	78	7.6%

Round 1 Federal National Standard = No more than 6.1%
New Mexico SFY 08 Standard = No more than 7.0%

Source: SM0907

CHILDREN REENTERING CARE WITHIN TWELVE MONTHS OF A PRIOR EPISODE

County McKinley	Total Entering Care #	# Reentering Within 12 Months	% Reentering Within 12 Months
2nd Qtr SFY 08	39	8	20.5%
Region Total	114	16	14.0%
State Total	535	76	14.2%

Round 1 Federal National Standard = No More than 8.6%
New Mexico SFY 08 Standard = No Standard

Source: SM0907

Note: SFY = State Fiscal Year. In New Mexico the State Fiscal year is July 1 through June 30 of the following year.

CHILDREN MALTREATED IN FOSTER CARE (PERFORMANCE OVER A ROLLING 12 MONTHS)

County McKinley	Total # of Chil- dren in Care	# Maltreated	% of Maltreated in Foster Care
2nd Qtr SFY 08	158	0	0.00%
Region Total	899	2	0.22%
State Total	4,700	24	0.51%

Round 1 Federal National Standard = No more than 0.57%
New Mexico SFY08 State Standard = No more than 0.57%

Source: SM0907

CHILDREN REUNIFIED IN LESS THAN TWELVE MONTHS OF ENTRY INTO CARE

County McKinley	Total # Reunified	# Reunified less than 12 mos	% Reunified less than 12 mos
2nd Qtr SFY 08	28	23	82.1%
Region Total	68	56	82.4%
State Total	290	236	81.4%

Round 1 Federal National Standard = At or above 76.2%
New Mexico SFY 08 State Standard = At or above 85.0%

Source: SM0907

CHILDREN IN FOSTER CARE FOR UP TO 12 MONTHS WITH NO MORE THAN TWO PLACEMENT SETTING

County McKinley	Total	# With Two or Fewer	% With Two or Fewer
2nd Qtr SFY 08	55	54	98.2%
Region Total	280	235	83.9%
State Total	1,448	1,163	80.3%

Round 1 Federal National Standard = At or Above 86.7%
New Mexico SFY 08 Standard = At or Above 86.7%

Source: SM0907

CHILDREN WITH A FINALIZED ADOPTION WITHIN 24 MONTHS OF ENTRY INTO CARE

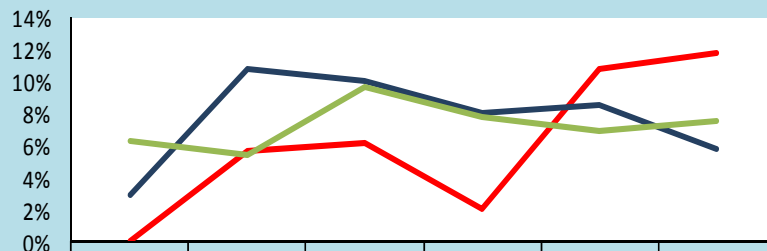
County McKinley	Total # Adopted	# <24 mos.	% <24 mos.
2nd Qtr SFY 08	0	0	0.0%
Region Total	6	2	33.3%
State Total	101	26	25.7%

Round 1 Federal National Standard = at least 32.0%
New Mexico SFY 08 Standard = At least 34.0%

Source: SM0907

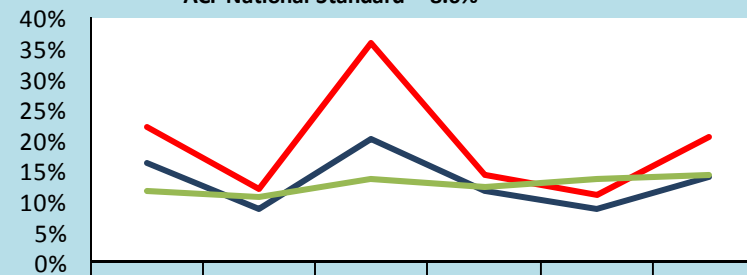
MCKINLEY COUNTY (REGION 1/JOLENE NATEWA COUNTY MANAGER)

Trends of Recurrence of Substantiated Maltreatment Within 6 Months of a Previously Substantiated Report of Maltreatment
ACF National Standard = 6.1%



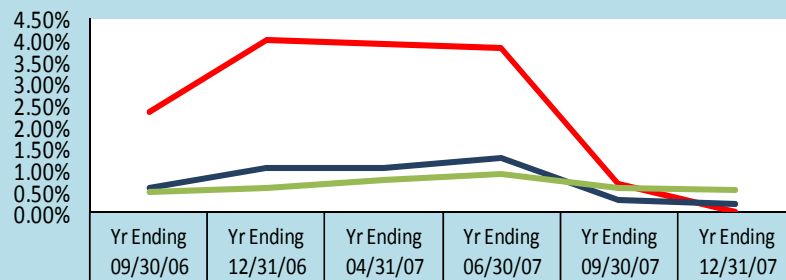
McKinley	0.0%	5.6%	6.1%	2.0%	10.8%	11.8%
Region Total	2.9%	10.8%	10.0%	8.1%	8.6%	5.8%
State Total	6.3%	5.4%	9.7%	7.8%	6.9%	7.6%

Trends of Children Reentering Care within Twelve Months of A Prior Episode
ACF National Standard = 8.6%



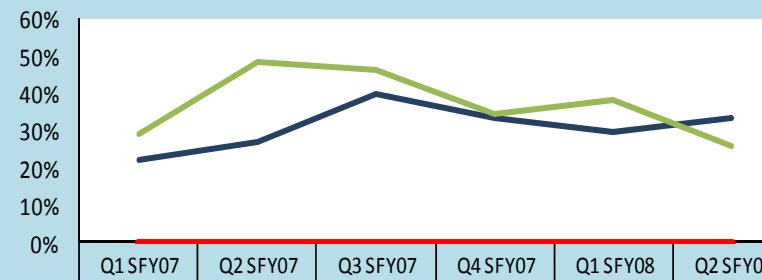
McKinley	22.2%	12.1%	35.7%	14.3%	11.1%	20.5%
Region Total	16.1%	8.5%	20.2%	11.5%	8.6%	14.0%
State Total	11.6%	10.6%	13.4%	12.1%	13.6%	14.2%

Trends of Children Maltreated in Foster Care (performance over Rolling 12 Months)
ACF National Standard = 0.57%



McKinley	2.33%	3.98%	3.87%	3.80%	0.64%	0.00%
Region Total	0.57%	1.07%	1.07%	1.28%	0.32%	0.22%
State Total	0.47%	0.54%	0.76%	0.88%	0.55%	0.51%

Trends of Children With a Finalized Adoption Within 24 Months of Entry Into Care
ACF National Standard = 32.0%



McKinley	0.0%	0.0%	0.0%	0.0%	0.0%	0.0%
Region Total	22.2%	27.3%	40.0%	33.3%	30.0%	33.3%
State Total	28.8%	48.2%	46.3%	34.4%	38.0%	25.7%

Note: The reader should note that in the instance of existing children maltreated in Foster Care, cases are carried forward in the calculation for 12 rolling months. Thus trend data will display the existing cases for 12 consecutive months. For this reason elevated levels across multiple quarter may not indicate new cases for this measure.

SAN JUAN COUNTY (REGION 1/NICOLE GARCIA COUNTY MANAGER)

According to the US Census in 2005, San Juan County attained an overall population of 113,801 or 6.54% of the state's total population. There were 37,133 children in the county in 2005; this represents 7.3% of the state's total children under 18. While the whole county accounts for 7.3% of the state's total children under 18, San Juan County had **10.22%** of the state's total children in care as of December 31, 2007.

	Race and Ethnicity			
	San Juan ¹		Total Population ²	
	Children Under 19 yrs	Children Under 19 yrs of Hispanic Origin	San Juan	New Mexico
Total Population	41,008	7,453	113,801	1,854,938
White	48.1%	88.7%	52.8%	66.8%
Black	0.8%	1.7%	0.4%	1.9%
American Indian or Alaskan Native	48.4%	6.7%	36.9%	9.5%
Asian	0.3%	0.3%	0.3%	1.1%
Native Hawaiian or Other Pacific Islander	0.1%	0.3%	0.0%	0.1%
Some other Race	2.3%	2.2%	6.8%	17.0%
Hispanic or Latino			15.0%	42.1%
Under 18 yrs			37,133	511,768
% of Families Living under the poverty Level			18.0%	14.5%

1. Source: U.S. Census Bureau, Population Division\Bureau of Business and Economic Research, Univ. of New Mexico.
2. Source: U.S. Census Bureau\State and County QuickFACTS

Children In Care End 12/31/07 San Juan County		
HISPANIC	No	Yes
Percentage	78.5%	21.5%

RACE	Total	%
American Indian or Alaskan Native	102	4.15%
Asian	1	0.04%
Black or African American	8	0.33%
Unable to Determine	3	0.12%
White	137	5.58%

Source: SM0907



Age of Children in Care End 12/31/07													
County	< 1 yr		1 - 5 yrs		6 - 10 yrs		11 - 15 yrs		16 - 17 yrs		18+ yrs		Total
	%	#	%	#	%	#	%	#	%	#	%	#	
San Juan	11%	28	28%	70	14%	35	17%	43	22%	55	8%	20	251
Region Total	7%	36	31%	164	70%	115	18%	95	14%	74	7%	38	522
State Total	2%	49	34%	835	33%	810	21%	516	6%	147	4%	98	2,455

Source: SM0907

SAN JUAN COUNTY (REGION 1/NICOLE GARCIA COUNTY MANAGER)

PROTECTIVE SERVICES REPORTS AND INVESTIGATIONS - QUARTER 2 SFY 08: OCTOBER - DECEMBER 2007

County	Accepted Reports	Investigations						County % of State Total Investigations ¹	Number of Children Victims	Victim Rate ² per 1,000 children
		Substantiated	Unsubstantiated	Total Investigations		Substantiated	Unsubstantiated			
San Juan	239	45	20.7%	172	79.3%	217		4.9%	63	6.8
Region Total	710	303	27.8%	786	72.2%	1,089		24.7%	452	14.5
State Total	3,748	1,041	23.6%	3,362	76.4%	4,403		100.0%	1,589	12.4

Note: Not all "accepted reports" result in investigations completed during the period under review.

- Both County and Regional data are calculated as a % of the State's total investigations for the period under review.
- For the quarterly *360 Degrees* County Profiles Report this information is calculated by annualizing the quarterly data. For the SFY Annual *360 Degrees* County Profiles Report this information is calculated, based on four quarters of reported data.

Source: SM01a02 and SM06a01

HOW ARE WE DOING?
By comparing "total investigations" for the quarter with "accepted reports" for the quarter, you can get a **sense** of work flow. To get a further sense of work flow, also review the cases with a "pending over 30 days" status and the case weight information for each county.

CPS ALLEGATION TYPES OF CHILD MALTREATMENT - QUARTER 2 SFY 08: OCTOBER - DECEMBER 2007

County	Physical Abuse					Sexual Abuse					Physical Neglect					Totals				
	Total	Substantiated	Unsubstantiated	Total	Substantiated	Unsubstantiated	Total	Substantiated	Unsubstantiated	Total	Substantiated	Unsubstantiated	Total	Substantiated	Unsubstantiated					
San Juan	206	30	14.6%	176	85.4%	11	1	9.1%	10	90.9%	441	65	14.7%	376	85.3%	658	96	14.6%	562	85.4%
Region Total	888	210	23.6%	678	76.4%	106	15	14.2%	91	85.8%	2,022	473	23.4%	1,549	76.6%	3,016	698	23.1%	2,318	76.9%
State Total	3,347	614	18.3%	2,733	81.7%	385	53	13.8%	332	86.2%	8,225	1900	23.1%	6,325	76.9%	11,957	2,567	21.5%	9,390	78.5%

Note: In every investigation there may be multiple allegations of maltreatment for one or more children. In counties with small populations, very small numbers in any category may render suspect any data collected during the period under review.

Source: SM06a01



PENDING INVESTIGATIONS: DECEMBER 2007

County	Reports Without An Investigation After 30 days		Pending Over 30 Days						Pending Less Than 30 Days		
	11/07	12/07	Baseline 11/04 Total	11/07 Total	12/07 Total	Priority Levels 12/07			Baseline 11/04 Total	11/07 Total	12/07 Total
						E	P1	P2			
San Juan	0	0	537	92	85	5	21	59	94	61	60
Region Total	0	0	1,297	389	217	18	50	149	286	186	169
State Total	3	2	4,917	1,614	1,165	98	239	828	1,296	1,141	900

Source : SM06a01

SAN JUAN COUNTY (REGION 1/NICOLE GARCIA COUNTY MANAGER)

CHILDREN IN AN OUT OF HOME PLACEMENT FOR MORE THAN TEN DAYS WITH AN INITIAL EPSDT¹ EXAMINATION 2ND QUARTER SFY 08



County	Children With Initial EPSDT Exam During Reporting Period		Children Without Initial EPSDT Exam During Reporting Period		Total Children in Out of Home Placement Greater Than 10 Days ²	Children with Initial EPSDT Within 30 Days	
	#	%	#	%	#	#	%
San Juan	6	40.0%	9	60.0%	15	5	33.3%
Region Total	19	38.0%	31	62.0%	50	16	32.0%
State Total	144	49.8%	145	50.2%	289	127	43.9%

1. EPSDT = Early and Periodic Screening, Diagnosis and Treatment Medicaid Medical Visits.
2. Report counts all children entering care during the parameter period and remaining in care more than 10 days.

Source: SM10a36

ADOPTION AND ADOLESCENT RESOURCE TEAM –2ND QUARTER SFY 08

	ADOPTION MEASURES NOT ACHIEVED	Total Cases	Not Achieved as % of Total Cases
San Juan	12	387	3.1%
Region Total	27	876	3.1%
State Total	67	2,845	2.4%

ADOPTION AND ADOLESCENT RESOURCE TEAM –2ND QUARTER SFY 08

	INDEPENDENT LIVING MEASURES NOT ACHIEVED	Total Cases	Not Achieved as % of Total Cases
San Juan	6	96	6.3%
Region Total	16	266	6.0%
State Total	27	1,125	2.4%

Source: JTS Database

Permanency Worker Case Weights SM0904 December 2007 Monthly Report

County	Number of Children in Custody as of 12/31/07	Number of Permanency Worker Positions as of 12/31/07	Number of Children per Permanency Worker as of 12/07
San Juan	251	12	20.9
State Total	554	30.5	18.2
Region Total	2,508	147.5	17.0

Source: December Monthly 2007 SM0904
FTE Position Responsible for Permanency Planning
Includes 110 Children w/No Plan

Investigation Worker Case Weight Report CY 2007

County	# of PS Investigation Worker Positions	Total # PS Accepted Reports 2007	Total # PS Completed Investigations 2006	Total # PS Completed Investigations 2007	% of Increase/Decrease in Investigations from CY06	Pending Investigation over 30 days 12/07	CY07 Avg Investigations Completed per Yr per worker	CY07 Avg Investigations Completed per Mo per worker
San Juan	8.0	912	1,076	1,053	-2.1%	85	131.6	11.0
State Total	26.5	2,992	3,275	3,394	3.6%	217	128.1	10.7
Region Total	132.5	15,424	16,116	16,005	-0.7%	1,065	120.8	10.1

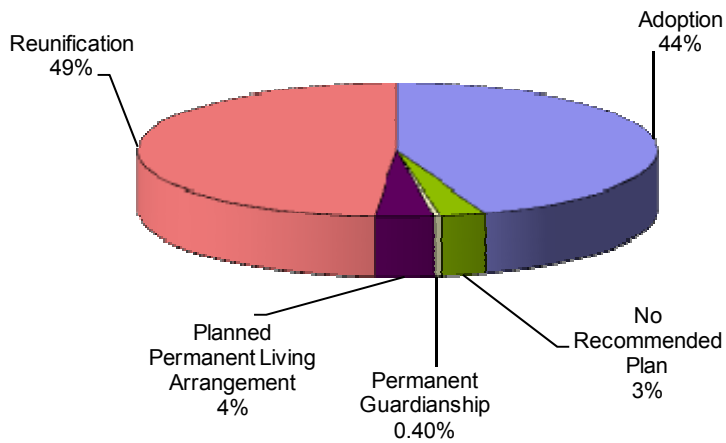
Source: SM01a02

SAN JUAN COUNTY (REGION 1/NICOLE GARCIA COUNTY MANAGER)

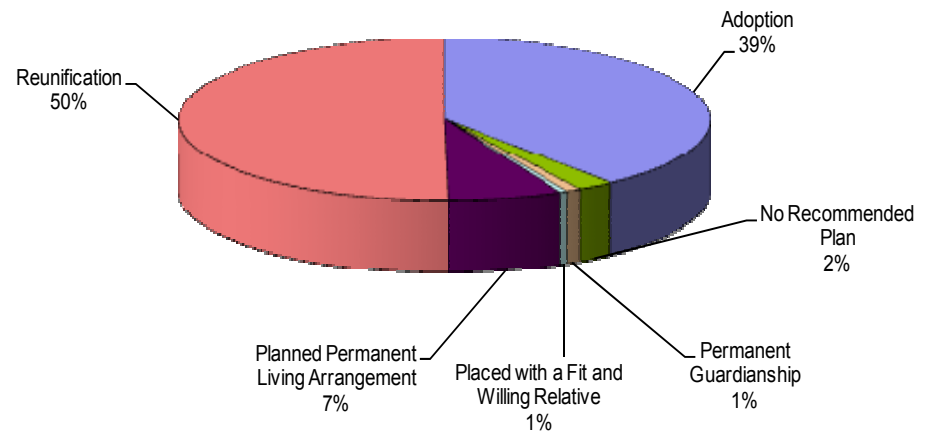
POINT IN TIME MEASURES: DECEMBER 31, 2007

County San Juan	Number	Region Total	State Total	% of State Total
NUMBER OF CHILDREN IN CARE (SM0907)	251	523	2,455	10.22%
• AVERAGE LENGTH OF STAY IN FOSTER CARE (IN MONTHS - END QTR) (SM0907)	44.6		21.3	
NUMBER OF FOSTER CARE PROVIDERS (PM02a01)	58	181	975	5.95%
NUMBER OF ADOPTION PROVIDERS (PM02a01)	39	177	1,427	2.73%
NUMBER OF CHILDREN WITH A PLAN OF ADOPTION (PM02a01)	110	241	935	11.76%
• NUMBER CHILDREN FREED AND WAITING (SM0907)	57	105	553	10.31%
• NUMBER OF CHILDREN FREED AND WAITING (WITH RESOURCES) (SM0803)	15	31	175	8.57%
• NUMBER OF CHILDREN FREED AND WAITING (WITHOUT RESOURCES) (SM0803)	42	74	378	11.11%
PERMANENT PLAN LIVING ARRANGEMENT (SM0904)	9	21	165	5.45%
WORKER VISITS WITH CHILDREN IN CARE (SM08-06)	Coming Soon			

Permanency Plan Goals of Children in Custody
San Juan County N = 247
Point In Time December 31, 2007
 Source: SM0904



Permanency Plan Goals of Children in Custody
New Mexico N = 2381
Point In Time December 31, 2007
 Source: SM0904



SAN JUAN COUNTY (REGION 1/NICOLE GARCIA COUNTY MANAGER)

RECURRENCE OF SUBSTANTIATED MALTREATMENT WITHIN 6 MONTHS OF A PREVIOUSLY SUBSTANTIATED REPORT OF MALTREATMENT

County San Juan	Total # of Maltreatment Victims	# With Recurrence	% With Recurrence
2nd Qtr SFY 08	48	0	0.0%
Region Total	260	15	5.8%
State Total	1,030	78	7.6%

Round 1 Federal National Standard = No more than 6.1%
New Mexico SFY 08 Standard = No more than 7.0%

Source: SM0907

CHILDREN REENTERING CARE WITHIN TWELVE MONTHS OF A PRIOR EPISODE

County San Juan	Total Entering Care #	# Reentering Within 12 Months	% Reentering Within 12 Months
2nd Qtr SFY 08	29	2	6.9%
Region Total	114	16	14.0%
State Total	535	76	14.2%

Round 1 Federal National Standard = No More than 8.6%
New Mexico SFY 08 Standard = No Standard

Source: SM0907

Note: SFY = State Fiscal Year. In New Mexico the State Fiscal year is July 1 through June 30 of the following year.

CHILDREN MALTREATED IN FOSTER CARE (PERFORMANCE OVER A ROLLING 12 MONTHS)

County San Juan	Total # of Children in Care	# Maltreated	% of Maltreated in Foster Care
2nd Qtr SFY 08	388	1	0.26%
Region Total	899	2	0.22%
State Total	4,700	24	0.51%

Round 1 Federal National Standard = No more than 0.57%
New Mexico SFY08 State Standard = No more than 0.57%

Source: SM0907

CHILDREN REUNIFIED IN LESS THAN TWELVE MONTHS OF ENTRY INTO CARE

County San Juan	Total # Reunified	# Reunified less than 12 mos	% Reunified less than 12 mos
2nd Qtr SFY 08	19	15	78.9%
Region Total	68	56	82.4%
State Total	290	236	81.4%

Round 1 Federal National Standard = At or above 76.2%
New Mexico SFY 08 State Standard = At or above 85.0%

Source: SM0907

CHILDREN IN FOSTER CARE FOR UP TO 12 MONTHS WITH NO MORE THAN TWO PLACEMENT SETTING

County San Juan	Total	# With Two or Fewer	% With Two or Fewer
2nd Qtr SFY 08	99	81	81.8%
Region Total	280	235	83.9%
State Total	1,448	1,163	80.3%

Round 1 Federal National Standard = At or Above 86.7%
New Mexico SFY 08 Standard = At or Above 86.7%

Source: SM0907

CHILDREN WITH A FINALIZED ADOPTION WITHIN 24 MONTHS OF ENTRY INTO CARE

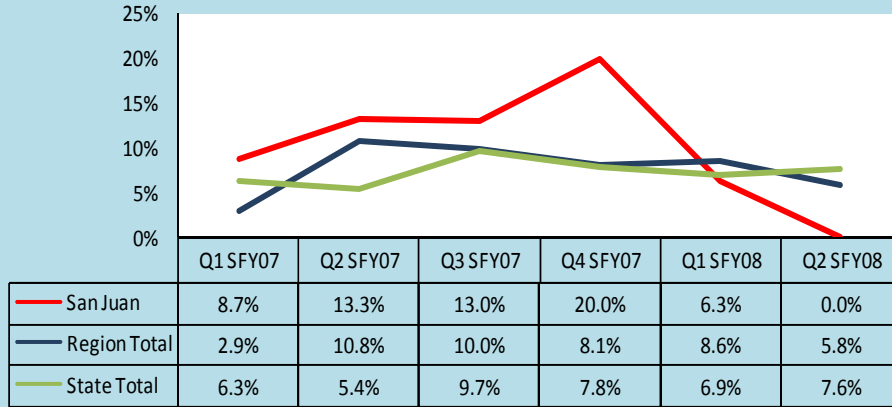
County San Juan	Total # Adopted	# <24 mos.	% <24 mos.
2nd Qtr SFY 08	1	0	0.0%
Region Total	6	2	33.3%
State Total	101	26	25.7%

Round 1 Federal National Standard = at least 32.0%
New Mexico SFY 08 Standard = At least 34.0%

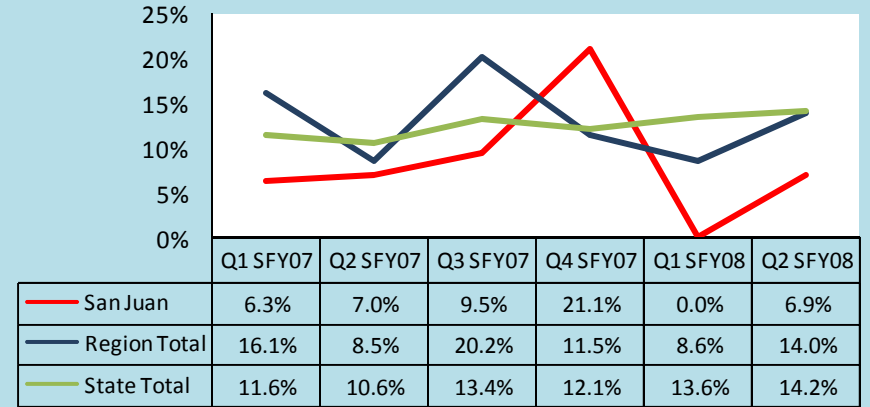
Source: SM0907

SAN JUAN COUNTY (REGION 1/JOLENE NATEWA COUNTY MANAGER)

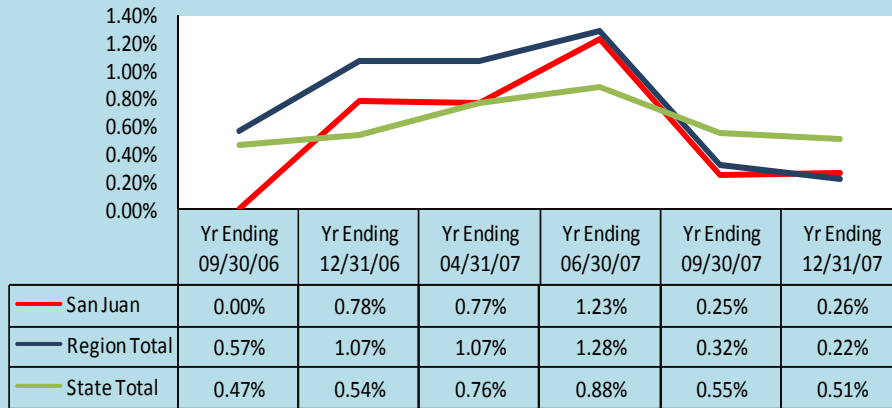
Trends of Recurrence of Substantiated Maltreatment Within 6 Months of a Previously Substantiated Report of Maltreatment
ACF National Standard = 6.1%



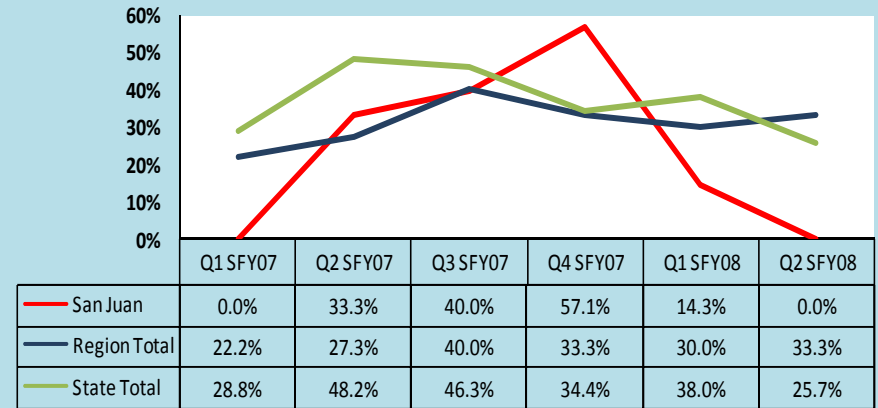
Trends of Children Reentering Care within Twelve Months of A Prior Episode
ACF National Standard = 8.6%



Trends of Children Maltreated in Foster Care (performance over Rolling 12 Months)
ACF National Standard = 0.57%



Trends of Children With a Finalized Adoption Within 24 Months of Entry Into Care
ACF National Standard = 32.0%



Note: The reader should note that in the instance of existing children maltreated in Foster Care, cases are carried forward in the calculation for 12 rolling months. Thus trend data will display the existing cases for 12 consecutive months. For this reason elevated levels across multiple quarter may not indicate new cases for this measure.

SANDOVAL COUNTY (REGION 1/JULIE BODENNER COUNTY MANAGER)

According to the US Census in 2005, Sandoval County attained an overall population of 89,908 or 4.85% of the state's total population. There were 26,590 children in the county in 2005; this represents 5.2% of the state's total children under 18. While the whole county accounts for **5.2%** of the state's total children under 18, Sandoval County had **1.63%** of the state's total children in care as of December 31, 2007.

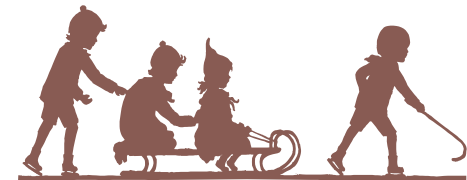
	Race and Ethnicity			
	Sandoval ¹		Total Population ²	
	Children Under 19 yrs	Children Under 19 yrs of Hispanic Origin	Sandoval	New Mexico
Total Population	30,606	11,412	89,908	1,854,938
White	73.2%	93.8%	65.1%	66.8%
Black	2.2%	1.7%	1.7%	1.9%
American Indian or Alaskan Native	20.3%	2.4%	16.3%	9.5%
Asian	1.1%	0.5%	1.0%	1.1%
Native Hawaiian or Other Pacific Islander	0.2%	0.3%	0.1%	0.1%
Some other Race	2.9%	1.4%	12.4%	17.0%
Hispanic or Latino			29.4%	42.1%
Under 18 yrs			26,590	511,768
% of Families Living under the poverty Level			9.0%	14.5%

1. Source: U.S. Census Bureau, Population Division/Bureau of Business and Economic Research, Univ. of New Mexico.
 2. Source: U.S. Census Bureau/State and County QuickFACTS

Children In Care End 12/31/07 Sandoval County		
HISPANIC	No	Yes
Percentage	60.0%	40.0%

RACE	Total	%
American Indian or Alaskan Native	2	0.08%
Black or African American	4	0.16%
Native Hawaiian or othr Pacific Islander	1	0.04%
Unable to Determine	1	0.04%
White	32	1.30%

Source: SM0907



Age of Children in Care End 12/31/07													
County	< 1 yr		1 - 5 yrs		6 - 10 yrs		11 - 15 yrs		16 - 17 yrs		18+ yrs		Total
	%	#	%	#	%	#	%	#	%	#	%	#	
Sandoval	5%	2	35%	14	25%	10	20%	8	4%	2	10%	4	40
Region Total	7%	36	31%	164	70%	115	18%	95	14%	74	7%	38	522
State Total	2%	49	34%	835	33%	810	21%	516	6%	147	4%	98	2,455

Source: SM0907

SANDOVAL COUNTY (REGION 1/JULIE BODENNER COUNTY MANAGER)

PROTECTIVE SERVICES REPORTS AND INVESTIGATIONS - QUARTER 2 SFY 08: OCTOBER - DECEMBER 2007

County	Accepted Reports	Investigations						County % of State Total Investigations ¹	Number of Children Victims	Victim Rate ² per 1,000 children
		Substantiated	Unsubstantiated	Total Investigations		Substantiated	Unsubstantiated			
Sandoval	137	43	14.8%	247	85.2%	290		6.6%	57	8.6
Region Total	710	303	27.8%	786	72.2%	1,089		24.7%	452	14.5
State Total	3,748	1,041	23.6%	3,362	76.4%	4,403		100.0%	1,589	12.4

Note: Not all "accepted reports" result in investigations completed during the period under review.

- Both County and Regional data are calculated as a % of the State's total investigations for the period under review.
- For the quarterly *360 Degrees* County Profiles Report this information is calculated by annualizing the quarterly data. For the SFY Annual *360 Degrees* County Profiles Report this information is calculated, based on four quarters of reported data.

HOW ARE WE DOING? By comparing "total investigations" for the quarter with "accepted reports" for the quarter, you can get a **sense** of work flow. To get a further sense of work flow, also review the cases with a "pending over 30 days" status and the case weight information for each county.

Source: SM01a02 and SM06a01

CPS ALLEGATION TYPES OF CHILD MALTREATMENT - QUARTER 2 SFY 08: OCTOBER - DECEMBER 2007

County	Physical Abuse					Sexual Abuse					Physical Neglect					Totals				
	Total	Substantiated	Unsubstantiated	Total	Substantiated	Unsubstantiated	Total	Substantiated	Unsubstantiated	Total	Substantiated	Unsubstantiated	Total	Substantiated	Unsubstantiated					
Sandoval	251	37	14.7%	214	85.3%	35	2	5.7%	33	94.3%	436	54	12.4%	382	87.6%	722	93	12.9%	629	87.1%
Region Total	888	210	23.6%	678	76.4%	106	15	14.2%	91	85.8%	2,022	473	23.4%	1,549	76.6%	3,016	698	23.1%	2,318	76.9%
State Total	3,347	614	18.3%	2,733	81.7%	385	53	13.8%	332	86.2%	8,225	1900	23.1%	6,325	76.9%	11,957	2,567	21.5%	9,390	78.5%

Note: In every investigation there may be multiple allegations of maltreatment for one or more children. In counties with small populations, very small numbers in any category may render suspect any data collected during the period under review.

Source: SM06a01



PENDING INVESTIGATIONS: DECEMBER 2007

County	Reports Without An Investigation After 30 days		Pending Over 30 Days						Pending Less Than 30 Days		
	11/07	12/07	Baseline 11/04 Total	11/07 Total	12/07 Total	Priority Levels 12/07			Baseline 11/04 Total	11/07 Total	12/07 Total
						E	P1	P2			
Sandoval	0	0	228	106	20	1	5	14	47	44	32
Region Total	0	0	1,297	389	217	18	50	149	286	186	169
State Total	3	2	4,917	1,614	1,165	98	239	828	1,296	1,141	900

Source : SM06a01

SANDOVAL COUNTY (REGION 1/JULIE BODENNER COUNTY MANAGER)

CHILDREN IN AN OUT OF HOME PLACEMENT FOR MORE THAN TEN DAYS WITH AN INITIAL EPSDT¹ EXAMINATION 2ND QUARTER SFY 08



County	Children With Initial EPSDT Exam During Reporting Period		Children Without Initial EPSDT Exam During Reporting Period		Total Children in Out of Home Placement Greater Than 10 Days ²	Children with Initial EPSDT Within 30 Days	
	#	%	#	%	#	#	%
Sandoval	2	28.6%	5	71.4%	7	2	28.6%
Region Total	19	38.0%	31	62.0%	50	16	32.0%
State Total	144	49.8%	145	50.2%	289	127	43.9%

1. EPSDT = Early and Periodic Screening, Diagnosis and Treatment Medicaid Medical Visits.

2. Report counts all children entering care during the parameter period and remaining in care more than 10 days.

Source: SM10a36

ADOPTION AND ADOLESCENT RESOURCE TEAM –2ND QUARTER SFY 08

	ADOPTION MEASURES NOT ACHIEVED	Total Cases	Not Achieved as % of Total Cases
Sandoval	0	17	0.0%
Region Total	27	876	3.1%
State Total	67	2,845	2.4%

ADOPTION AND ADOLESCENT RESOURCE TEAM –2ND QUARTER SFY 08

	INDEPENDENT LIVING MEASURES NOT ACHIEVED	Total Cases	Not Achieved as % of Total Cases
Sandoval	0	54	0.0%
Region Total	16	266	6.0%
State Total	27	1,125	2.4%

Source: JTS Database

Permanency Worker Case Weights SM0904 December 2007 Monthly Report

County	Number of Children in Custody as of 12/31/07	Number of Permanency Worker Positions as of 12/31/07	Number of Children per Permanency Worker as of 12/07
Sandoval	43	4	10.8
State Total	554	30.5	18.2
Region Total	2,508	147.5	17.0

Source: December Monthly 2007 SM0904

FTE Position Responsible for Permanency Planning
Includes 110 Children w/No Plan

Investigation Worker Case Weight Report CY 2007

Total # PS Completed Investigations 2006	Total # PS Completed Investigations 2007	% of Increase/Decrease in Investigations from CY06	Pending Investigation over 30 days 12/07	CY07 Avg Investigations Completed per Yr per worker	CY07 Avg Investigations Completed per Mo per worker
664	765	15.2%	20	153.0	12.8
3,275	3,394	3.6%	217	128.1	10.7
16,116	16,005	-0.7%	1,065	120.8	10.1

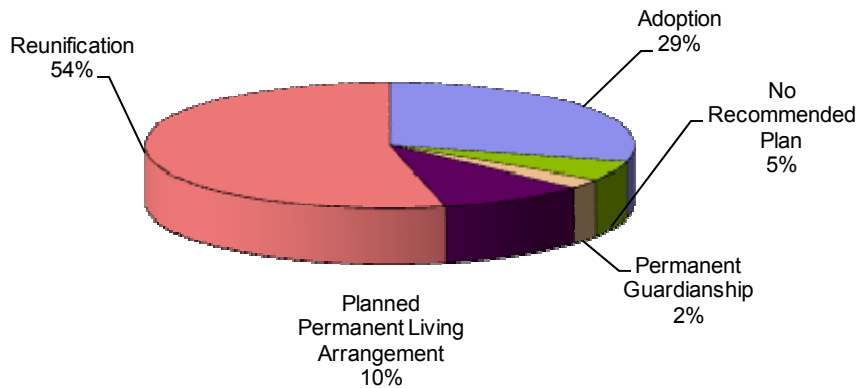
Source: SM01a02

SANDOVAL COUNTY (REGION 1/JULIE BODENNER COUNTY MANAGER)

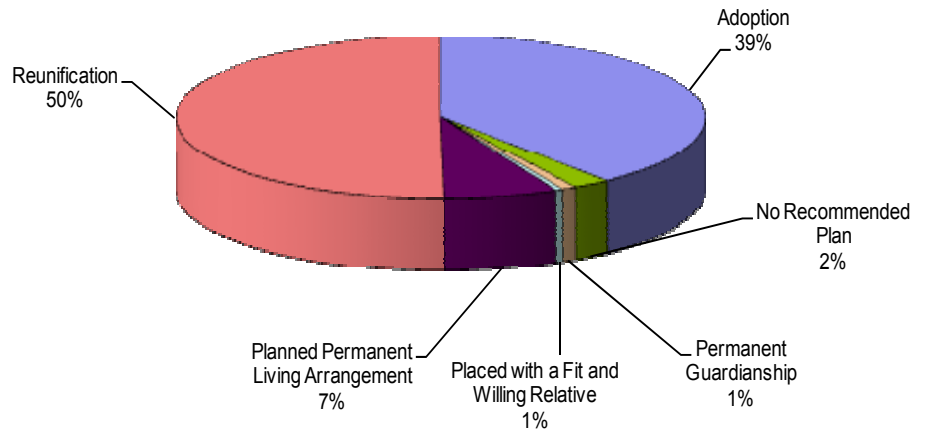
POINT IN TIME MEASURES: DECEMBER 31, 2007

County Sandoval	Number	Region Total	State Total	% of State Total
NUMBER OF CHILDREN IN CARE (SM0907)	40	523	2,455	1.63%
• AVERAGE LENGTH OF STAY IN FOSTER CARE (IN MONTHS - END QTR) (SM0907)	14.6		21.3	
NUMBER OF FOSTER CARE PROVIDERS (PM02a01)	37	181	975	3.79%
NUMBER OF ADOPTION PROVIDERS (PM02a01)	13	177	1,427	0.91%
NUMBER OF CHILDREN WITH A PLAN OF ADOPTION (PM02a01)	12	241	935	1.28%
• NUMBER CHILDREN FREED AND WAITING (SM0907)	9	105	553	1.63%
• NUMBER OF CHILDREN FREED AND WAITING (WITH RESOURCES) (SM0803)	7	31	175	4.00%
• NUMBER OF CHILDREN FREED AND WAITING (WITHOUT RESOURCES) (SM0803)	42	74	378	11.11%
PERMANENT PLAN LIVING ARRANGEMENT (SM0904)	4	21	165	2.42%
WORKER VISITS WITH CHILDREN IN CARE (SM08-06)	Coming Soon			

Permanency Plan Goals of Children in Custody
Sandoval County N = 41
Point In Time December 31, 2007
 Source: SM0904



Permanency Plan Goals of Children in Custody
New Mexico N = 2381
Point In Time December 31, 2007
 Source: SM0904



SANDOVAL COUNTY (REGION 1/JULIE BODENNER COUNTY MANAGER)

RECURRENCE OF SUBSTANTIATED MALTREATMENT WITHIN 6 MONTHS OF A PREVIOUSLY SUBSTANTIATED REPORT OF MALTREATMENT

County Sandoval	Total # of Maltreatment Victims	# With Recurrence	% With Recurrence
2nd Qtr SFY 08	27	2	7.4%
Region Total	260	15	5.8%
State Total	1,030	78	7.6%

Round 1 Federal National Standard = No more than 6.1%
New Mexico SFY 08 Standard = No more than 7.0%

Source: SM0907

CHILDREN REENTERING CARE WITHIN TWELVE MONTHS OF A PRIOR EPISODE

County Sandoval	Total Entering Care #	# Reentering Within 12 Months	% Reentering Within 12 Months
2nd Qtr SFY 08	13	1	7.7%
Region Total	114	16	14.0%
State Total	535	76	14.2%

Round 1 Federal National Standard = No More than 8.6%
New Mexico SFY 08 Standard = No Standard

Source: SM0907

Note: SFY = State Fiscal Year. In New Mexico the State Fiscal year is July 1 through June 30 of the following year.

CHILDREN MALTREATED IN FOSTER CARE (PERFORMANCE OVER A ROLLING 12 MONTHS)

County Sandoval	Total # of Children in Care	# Maltreated	% of Maltreated in Foster Care
2nd Qtr SFY 08	82	0	0.00%
Region Total	899	2	0.22%
State Total	4,700	24	0.51%

Round 1 Federal National Standard = No more than 0.57%
New Mexico SFY08 State Standard = No more than 0.57%

Source: SM0907

CHILDREN REUNIFIED IN LESS THAN TWELVE MONTHS OF ENTRY INTO CARE

County Sandoval	Total # Reunified	# Reunified less than 12 mos	% Reunified less than 12 mos
2nd Qtr SFY 08	5	5	100.0%
Region Total	68	56	82.4%
State Total	290	236	81.4%

Round 1 Federal National Standard = At or above 76.2%
New Mexico SFY 08 State Standard = At or above 85.0%

Source: SM0907

CHILDREN IN FOSTER CARE FOR UP TO 12 MONTHS WITH NO MORE THAN TWO PLACEMENT SETTING

County Sandoval	Total	# With Two or Fewer	% With Two or Fewer
2nd Qtr SFY 08	38	28	73.7%
Region Total	280	235	83.9%
State Total	1,448	1,163	80.3%

Round 1 Federal National Standard = At or Above 86.7%
New Mexico SFY 08 Standard = At or Above 86.7%

Source: SM0907

CHILDREN WITH A FINALIZED ADOPTION WITHIN 24 MONTHS OF ENTRY INTO CARE

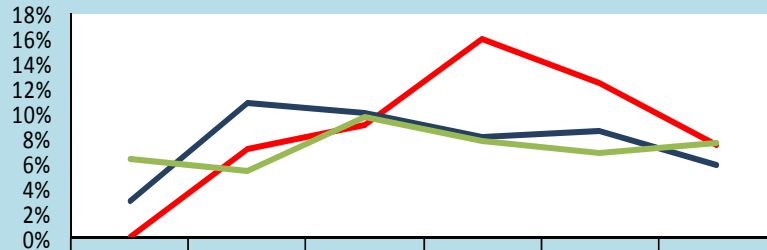
County Sandoval	Total # Adopted	# <24 mos.	% <24 mos.
2nd Qtr SFY 08	0	0	0.0%
Region Total	6	2	33.3%
State Total	101	26	25.7%

Round 1 Federal National Standard = at least 32.0%
New Mexico SFY 08 Standard = At least 34.0%

Source: SM0907

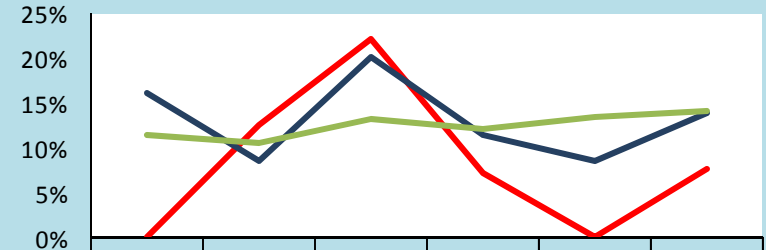
SANDOVAL COUNTY (REGION 1/JULIE BODENNER COUNTY MANAGER)

Trends of Recurrence of Substantiated Maltreatment Within 6 Months of a Previously Substantiated Report of Maltreatment
ACF National Standard = 6.1%



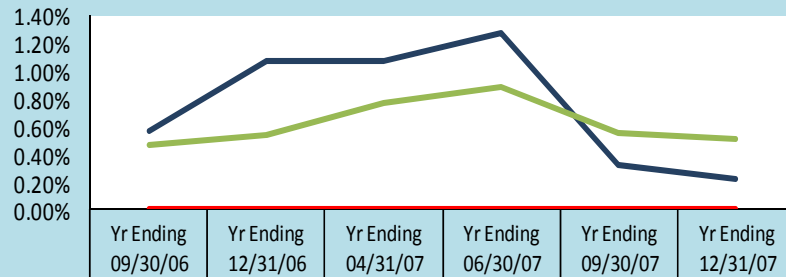
Sandoval	0.0%	7.1%	9.1%	16.0%	12.5%	7.4%
Region Total	2.9%	10.8%	10.0%	8.1%	8.6%	5.8%
State Total	6.3%	5.4%	9.7%	7.8%	6.9%	7.6%

Trends of Children Reentering Care within Twelve Months of A Prior Episode
ACF National Standard = 8.6%



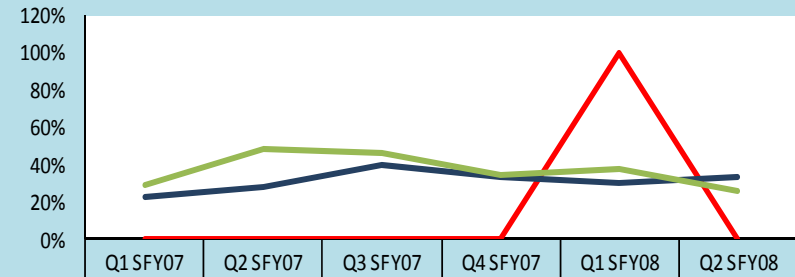
Sandoval	0.0%	12.5%	22.2%	7.1%	0.0%	7.7%
Region Total	16.1%	8.5%	20.2%	11.5%	8.6%	14.0%
State Total	11.6%	10.6%	13.4%	12.1%	13.6%	14.2%

Trends of Children Maltreated in Foster Care (performance over Rolling 12 Months)
ACF National Standard = 0.57%



Sandoval	0.00%	0.00%	0.00%	0.00%	0.00%	0.00%
Region Total	0.57%	1.07%	1.07%	1.28%	0.32%	0.22%
State Total	0.47%	0.54%	0.76%	0.88%	0.55%	0.51%

Trends of Children With a Finalized Adoption Within 24 Months of Entry Into Care
ACF National Standard = 32.0%



Sandoval	0.0%	0.0%	0.0%	0.0%	100.0%	0.0%
Region Total	22.2%	27.3%	40.0%	33.3%	30.0%	33.3%
State Total	28.8%	48.2%	46.3%	34.4%	38.0%	25.7%

Note: The reader should note that in the instance of existing children maltreated in Foster Care, cases are carried forward in the calculation for 12 rolling months. Thus trend data will display the existing cases for 12 consecutive months. For this reason elevated levels across multiple quarter may not indicate new cases for this measure.

TORRANCE COUNTY (REGION 1/VALERIE LOPEZ ACTING COUNTY MANAGER)

According to the US Census in 2005, Torrance County attained an overall population of 16,911 or 0.91% of the state's total population. There were 5,135 children in the county in 2005; this represents 1.0% of the state's total children under 18. While the whole county accounts for **1.0%** of the state's total children under 18, Torrance County had **0.90%** of the state's total children in care as of December 31, 2007.

	Race and Ethnicity			
	Torrance ¹		Total Population ²	
	Children Under 19 yrs	Children Under 19 yrs of Hispanic Origin	Torrance	New Mexico
Total Population	4,760	2,147	16,911	1,854,938
White	92.5%	95.2%	73.9%	66.8%
Black	1.6%	1.7%	1.7%	1.9%
American Indian or Alaskan Native	3.4%	1.7%	2.1%	9.5%
Asian	0.4%	0.0%	0.3%	1.1%
Native Hawaiian or Other Pacific Islander	0.0%	0.1%	0.1%	0.1%
Some other Race	2.0%	1.2%	17.9%	17.0%
Hispanic or Latino			37.2%	42.1%
Under 18 yrs			5,135	511,768
% of Families Living under the poverty Level			15.2%	14.5%

1. Source: U.S. Census Bureau, Population Division/Bureau of Business and Economic Research, Univ. of New Mexico.
 2. Source: U.S. Census Bureau/State and County QuickFACTS

Children In Care End 12/31/07 Torrance County		
HISPANIC	No	Yes
Percentage	54.5%	45.5%

RACE	Total	%
American Indian or Alaskan Native	1	0.04%
Black or African American	2	0.08%
Unable to Determine	1	0.04%
White	18	0.73%

Source: SM0907



Age of Children in Care End 12/31/07													
County	< 1 yr		1 - 5 yrs		6 - 10 yrs		11 - 15 yrs		16 - 17 yrs		18+ yrs		Total
	%	#	%	#	%	#	%	#	%	#	%	#	
Torrance	0%	0	29%	6	24%	5	12%	3	18%	4	18%	4	22
Region Total	7%	36	31%	164	70%	115	18%	95	14%	74	7%	38	522
State Total	2%	49	34%	835	33%	810	21%	516	6%	147	4%	98	2,455

Source: SM0907

TORRANCE COUNTY (REGION 1/VALERIE LOPEZ ACTING COUNTY MANAGER)

PROTECTIVE SERVICES REPORTS AND INVESTIGATIONS - QUARTER 2 SFY 08: OCTOBER - DECEMBER 2007

County	Accepted Reports	Investigations						County % of State Total Investigations ¹	Number of Children Victims	Victim Rate ² per 1,000 children
		Substantiated	Unsubstantiated	Total Investigations		Substantiated	Unsubstantiated			
Torrance	47	6	13.0%	40	87.0%	46	1.0%	7	5.5	
Region Total	710	303	27.8%	786	72.2%	1,089	24.7%	452	14.5	
State Total	3,748	1,041	23.6%	3,362	76.4%	4,403	100.0%	1,589	12.4	

Note: Not all "accepted reports" result in investigations completed during the period under review.

- Both County and Regional data are calculated as a % of the State's total investigations for the period under review.
- For the quarterly *360 Degrees* County Profiles Report this information is calculated by annualizing the quarterly data. For the SFY Annual *360 Degrees* County Profiles Report this information is calculated, based on four quarters of reported data.

Source: SM01a02 and SM06a01

HOW ARE WE DOING?
By comparing "total investigations" for the quarter with "accepted reports" for the quarter, you can get a **sense** of work flow. To get a further sense of work flow, also review the cases with a "pending over 30 days" status and the case weight information for each county.

CPS ALLEGATION TYPES OF CHILD MALTREATMENT - QUARTER 2 SFY 08: OCTOBER - DECEMBER 2007

County	Physical Abuse					Sexual Abuse					Physical Neglect					Totals				
	Total	Substantiated	Unsubstantiated	Total	Substantiated	Unsubstantiated	Total	Substantiated	Unsubstantiated	Total	Substantiated	Unsubstantiated	Total	Substantiated	Unsubstantiated					
Torrance	23	5	21.7%	18	78.3%	6	0	0.0%	6	100.0%	77	5	6.5%	72	93.5%	106	10	9.4%	96	90.6%
Region Total	888	210	23.6%	678	76.4%	106	15	14.2%	91	85.8%	2,022	473	23.4%	1,549	76.6%	3,016	698	23.1%	2,318	76.9%
State Total	3,347	614	18.3%	2,733	81.7%	385	53	13.8%	332	86.2%	8,225	1900	23.1%	6,325	76.9%	11,957	2,567	21.5%	9,390	78.5%

Note: In every investigation there may be multiple allegations of maltreatment for one or more children. In counties with small populations, very small numbers in any category may render suspect any data collected during the period under review.

Source: SM06a01



PENDING INVESTIGATIONS: DECEMBER 2007

County	Reports Without An Investigation After 30 days		Pending Over 30 Days						Pending Less Than 30 Days		
	11/07	12/07	Baseline 11/04 Total	11/07 Total	12/07 Total	Priority Levels 12/07			Baseline 11/04 Total	11/07 Total	12/07 Total
						E	P1	P2			
Torrance	0	0	13	1	3	0	0	3	26	12	16
Region Total	0	0	1,297	389	217	18	50	149	286	186	169
State Total	3	2	4,917	1,614	1,165	98	239	828	1,296	1,141	900

Source: SM06a01

TORRANCE COUNTY (REGION 1/VALERIE LOPEZ ACTING COUNTY MANAGER)



CHILDREN IN AN OUT OF HOME PLACEMENT FOR MORE THAN TEN DAYS WITH AN INITIAL EPSDT¹ EXAMINATION 2ND QUARTER SFY 08

County	Children With Initial EPSDT Exam During Reporting Period		Children Without Initial EPSDT Exam During Reporting Period		Total Children in Out of Home Placement Greater Than 10 Days ²	Children with Initial EPSDT Within 30 Days	
	#	%	#	%	#	#	%
Torrance	4	0.0%	1	0.0%	5	4	0.0%
Region Total	19	38.0%	31	62.0%	50	16	32.0%
State Total	144	49.8%	145	50.2%	289	127	43.9%

1. EPSDT = Early and Periodic Screening, Diagnosis and Treatment Medicaid Medical Visits.
2. Report counts all children entering care during the parameter period and remaining in care more than 10 days.

Source: SM10a36

ADOPTION AND ADOLESCENT RESOURCE TEAM –2ND QUARTER SFY 08

	ADOPTION MEASURES NOT ACHIEVED	Total Cases	Not Achieved as % of Total Cases
Torrance	0	23	0.0%
Region Total	27	876	3.1%
State Total	67	2,845	2.4%

ADOPTION AND ADOLESCENT RESOURCE TEAM –2ND QUARTER SFY 08

	INDEPENDENT LIVING MEASURES NOT ACHIEVED	Total Cases	Not Achieved as % of Total Cases
Torrance	1	11	9.1%
Region Total	16	266	6.0%
State Total	27	1,125	2.4%

Source: JTS Database

Permanency Worker Case Weights SM0904 December 2007 Monthly Report

County	Number of Children in Custody as of 12/31/07	Number of Permanency Worker Positions as of 12/31/07	Number of Children per Permanency Worker as of 12/07
Torrance	19	2	9.5
State Total	554	30.5	18.2
Region Total	2,508	147.5	17.0

Source: December Monthly 2007 SM0904
FTE Position Responsible for Permanency Planning
Includes 110 Children w/No Plan

Investigation Worker Case Weight Report CY 2007

County	# of PS Investigation Worker Positions	Total # PS Accepted Reports 2007	Total # PS Completed Investigations 2006	Total # PS Completed Investigations 2007	% of Increase/Decrease in Investigations from CY06	Pending Investigation over 30 days 12/07	CY07 Avg Investigations Completed per Yr per worker	CY07 Avg Investigations Completed per Mo per worker
Torrance	2.0	176	228	223	-2.2%	3	111.5	9.3
State Total	26.5	2,992	3,275	3,394	3.6%	217	128.1	10.7
Region Total	132.5	15,424	16,116	16,005	-0.7%	1,065	120.8	10.1

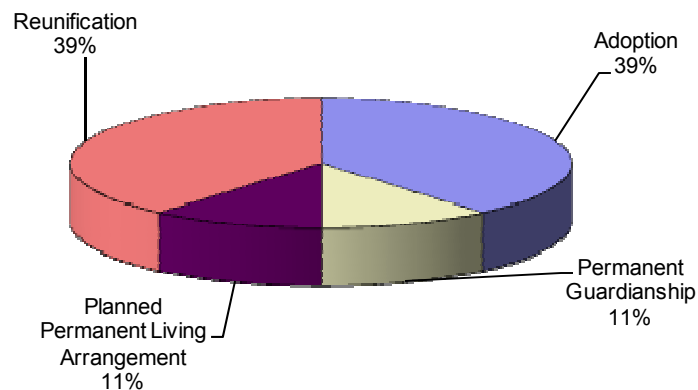
Source: SM01a02

TORRANCE COUNTY (REGION 1/VALERIE LOPEZ ACTING COUNTY MANAGER)

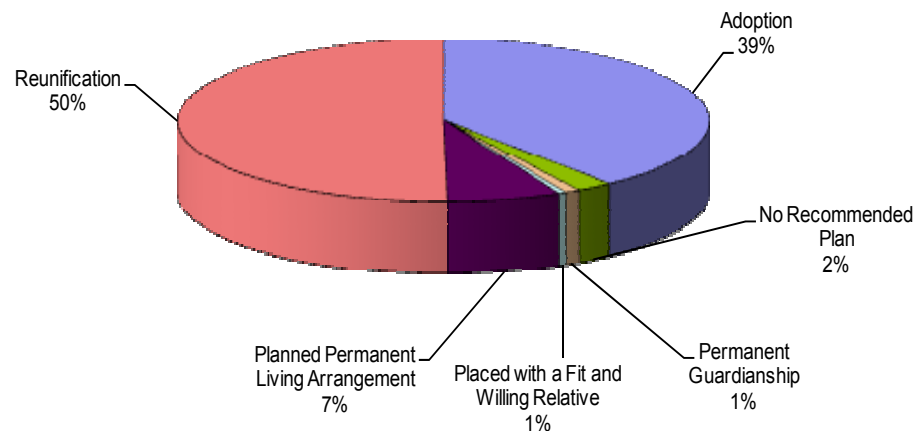
POINT IN TIME MEASURES: DECEMBER 31, 2007

County Torrance	Number	Region Total	State Total	% of State Total
NUMBER OF CHILDREN IN CARE (SM0907)	22	523	2,455	0.90%
• AVERAGE LENGTH OF STAY IN FOSTER CARE (IN MONTHS - END QTR) (SM0907)	41.6		21.3	
NUMBER OF FOSTER CARE PROVIDERS (PM02a01)	12	181	975	1.23%
NUMBER OF ADOPTION PROVIDERS (PM02a01)	15	177	1,427	1.05%
NUMBER OF CHILDREN WITH A PLAN OF ADOPTION (PM02a01)	7	241	935	0.75%
• NUMBER CHILDREN FREED AND WAITING (SM0907)	6	105	553	1.08%
• NUMBER OF CHILDREN FREED AND WAITING (WITH RESOURCES) (SM0803)	3	31	175	1.71%
• NUMBER OF CHILDREN FREED AND WAITING (WITHOUT RESOURCES) (SM0803)	3	74	378	0.79%
PERMANENT PLAN LIVING ARRANGEMENT (SM0904)	2	21	165	1.21%
WORKER VISITS WITH CHILDREN IN CARE (SM08-06)	Coming Soon			

**Permanency Plan Goals of Children in Custody
Torrance County N = 18
Point In Time December 31, 2007**
Source: SM0904



**Permanency Plan Goals of Children in Custody
New Mexico N = 2381
Point In Time December 31, 2007**
Source: SM0904



TORRANCE COUNTY (REGION 1/VALERIE LOPEZ ACTING COUNTY MANAGER)

RECURRENCE OF SUBSTANTIATED MALTREATMENT WITHIN 6 MONTHS

OF A PREVIOUSLY SUBSTANTIATED REPORT OF MALTREATMENT

County Torrance	Total # of Maltreatment Victims	# With Recurrence	% With Recurrence
2nd Qtr SFY 08	21	1	4.8%
Region Total	260	15	5.8%
State Total	1,030	78	7.6%

Round 1 Federal National Standard = No more than 6.1%
New Mexico SFY 08 Standard = No more than 7.0%

Source: SM0907

CHILDREN REENTERING CARE WITHIN TWELVE MONTHS OF A PRIOR EPISODE

County Torrance	Total Entering Care #	# Reentering Within 12 Months	% Reentering Within 12 Months
2nd Qtr SFY 08	6	0	0.0%
Region Total	114	16	14.0%
State Total	535	76	14.2%

Round 1 Federal National Standard = No More than 8.6%
New Mexico SFY 08 Standard = No Standard

Source: SM0907

Note: SFY = State Fiscal Year. In New Mexico the State Fiscal year is July 1 through June 30 of the following year.

CHILDREN MALTREATED IN FOSTER CARE (PERFORMANCE OVER A ROLLING 12 MONTHS)

County Torrance	Total # of Chil- dren in Care	# Maltreated	% of Maltreated in Foster Care
2nd Qtr SFY 08	44	0	0.00%
Region Total	899	2	0.22%
State Total	4,700	24	0.51%

Round 1 Federal National Standard = No more than 0.57%
New Mexico SFY08 State Standard = No more than 0.57%

Source: SM0907

CHILDREN REUNIFIED IN LESS THAN TWELVE MONTHS OF ENTRY INTO CARE

County Torrance	Total # Reunified	# Reunified less than 12 mos	% Reunified less than 12 mos
2nd Qtr SFY 08	2	2	100.0%
Region Total	68	56	82.4%
State Total	290	236	81.4%

Round 1 Federal National Standard = At or above 76.2%
New Mexico SFY 08 State Standard = At or above 85.0%

Source: SM0907

CHILDREN IN FOSTER CARE FOR UP TO 12 MONTHS WITH NO MORE THAN TWO PLACEMENT SETTING

County Torrance	Total	# With Two or Fewer	% With Two or Fewer
2nd Qtr SFY 08	10	10	100.0%
Region Total	280	235	83.9%
State Total	1,448	1,163	80.3%

Round 1 Federal National Standard = At or Above 86.7%
New Mexico SFY 08 Standard = At or Above 86.7%

Source: SM0907

CHILDREN WITH A FINALIZED ADOPTION WITHIN 24 MONTHS OF ENTRY INTO CARE

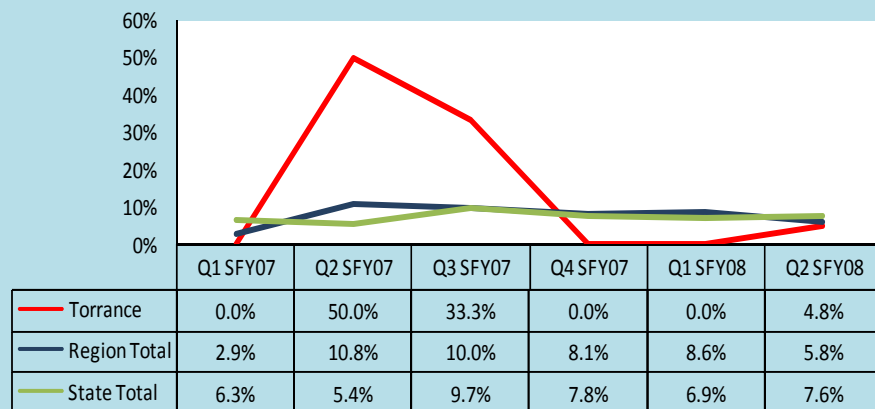
County Torrance	Total # Adopted	# <24 mos.	%<24 mos.
2nd Qtr SFY 08	1	0	0.0%
Region Total	6	2	33.3%
State Total	101	26	25.7%

Round 1 Federal National Standard = at least 32.0%
New Mexico SFY 08 Standard = At least 34.0%

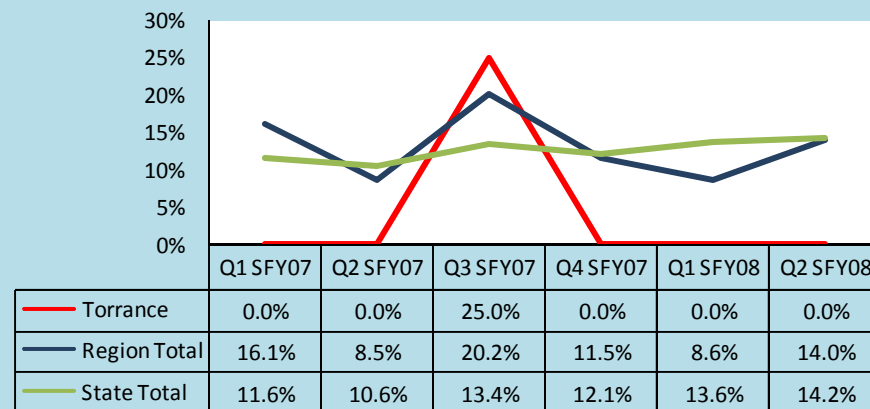
Source: SM0907

TORRANCE COUNTY (REGION 1/ARLEEN LUCERO COUNTY MANAGER)

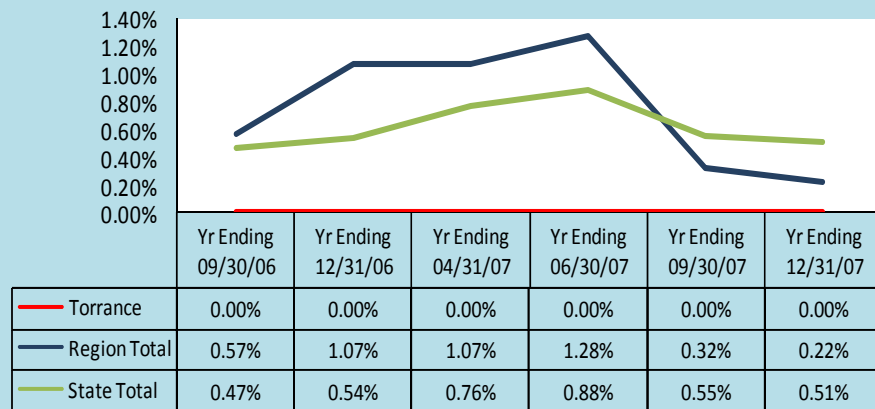
Trends of Recurrence of Substantiated Maltreatment Within 6 Months of a Previously Substantiated Report of Maltreatment
ACF National Standard = 6.1%



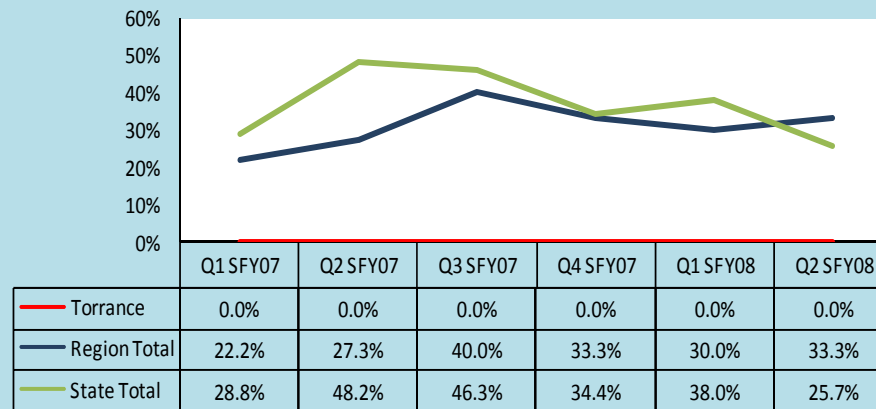
Trends of Children Reentering Care within Twelve Months of A Prior Episode
ACF National Standard = 8.6%



Trends of Children Maltreated in Foster Care (performance over Rolling 12 Months)
ACF National Standard = 0.57%



Trends of Children With a Finalized Adoption Within 24 Months of Entry Into Care
ACF National Standard = 32.0%



Note: The reader should note that in the instance of existing children maltreated in Foster Care, cases are carried forward in the calculation for 12 rolling months. Thus trend data will display the existing cases for 12 consecutive months. For this reason elevated levels across multiple quarter may not indicate new cases for this measure.

VALENCIA COUNTY (REGION 1/ARLEEN LUCERO)

According to the US Census in 2005, Valencia County attained an overall population of 66,152 or 3.57% of the state's total population. There were 19,936 children in the county in 2005; this represents 3.9% of the state's total children under 18. While the whole county accounts for 3.9% of the state's total children under 18, Valencia County had 4.24% of the state's total children in care as of December 31, 2007.

	Race and Ethnicity			
	Valencia ¹		Total Population ²	
	Children Under 19 yrs	Children Under 19 yrs of Hispanic Origin	Valencia	New Mexico
Total Population	20,513	13,283	66,152	1,854,938
White	91.1%	95.1%	66.5%	66.8%
Black	1.6%	1.0%	1.3%	1.9%
American Indian or Alaskan Native	4.6%	2.1%	3.3%	9.5%
Asian	0.4%	0.2%	0.4%	1.1%
Native Hawaiian or Other Pacific Islander	0.2%	0.2%	0.1%	0.1%
Some other Race	2.1%	1.3%	23.9%	17.0%
Hispanic or Latino			55.0%	42.1%
Under 18 yrs			19,936	511,768
% of Families Living under the poverty Level			13.5%	14.5%

1. Source: U.S. Census Bureau, Population Division/Bureau of Business and Economic Research, Univ. of New Mexico.
 2. Source: U.S. Census Bureau/State and County QuickFACTS

Children In Care End 12/31/07 Valencia County		
HISPANIC	No	Yes
Percentage	49.0%	51.0%

RACE	Total	%
American Indian or Alaskan Native	7	0.29%
Asian	3	0.12%
Black or African American	5	0.20%
Unable to Determine	1	0.04%
White	88	3.58%

Source: SM0907



Age of Children in Care End 12/31/07													
County	< 1 yr		1 - 5 yrs		6 - 10 yrs		11 - 15 yrs		16 - 17 yrs		18+ yrs		Total
	%	#	%	#	%	#	%	#	%	#	%	#	
Valencia	2%	2	33%	34	34%	35	21%	22	6%	6	4%	4	104
Region Total	7%	36	31%	164	70%	115	18%	95	14%	74	7%	38	522
State Total	2%	49	34%	835	33%	810	21%	516	6%	147	4%	98	2,455

Source: SM0907

VALENCIA COUNTY (REGION 1/ARLEEN LUCERO)

PROTECTIVE SERVICES REPORTS AND INVESTIGATIONS - QUARTER 2 SFY 08: OCTOBER - DECEMBER 2007

County	Accepted Reports	Investigations						County % of State Total Investigations ¹	Number of Children Victims	Victim Rate ² per 1,000 children
		Substantiated	Unsubstantiated	Total Investigations		Substantiated	Unsubstantiated			
Valencia	153	156	35.4%	285	64.6%	441	10.0%	235	47.2	
Region Total	710	303	27.8%	786	72.2%	1,089	24.7%	452	14.5	
State Total	3,748	1,041	23.6%	3,362	76.4%	4,403	100.0%	1,589	12.4	

Note: Not all "accepted reports" result in investigations completed during the period under review.

- Both County and Regional data are calculated as a % of the State's total investigations for the period under review.
- For the quarterly *360 Degrees* County Profiles Report this information is calculated by annualizing the quarterly data. For the SFY Annual *360 Degrees* County Profiles Report this information is calculated, based on four quarters of reported data.

Source: SM01a02 and SM06a01

HOW ARE WE DOING?
By comparing "total investigations" for the quarter with "accepted reports" for the quarter, you can get a **sense** of work flow. To get a further sense of work flow, also review the cases with a "pending over 30 days" status and the case weight information for each county.

CPS ALLEGATION TYPES OF CHILD MALTREATMENT - QUARTER 2 SFY 08: OCTOBER - DECEMBER 2007

County	Physical Abuse					Sexual Abuse					Physical Neglect				Totals					
	Total	Substantiated	Unsubstantiated	Total	Substantiated	Unsubstantiated	Total	Substantiated	Unsubstantiated	Total	Substantiated	Unsubstantiated	Total	Substantiated	Unsubstantiated					
Valencia	332	99	29.8%	233	70.2%	39	4	10.3%	35	89.7%	901	264	29.3%	637	70.7%	1,272	367	28.9%	905	71.1%
Region Total	888	210	23.6%	678	76.4%	106	15	14.2%	91	85.8%	2,022	473	23.4%	1,549	76.6%	3,016	698	23.1%	2,318	76.9%
State Total	3,347	614	18.3%	2,733	81.7%	385	53	13.8%	332	86.2%	8,225	1900	23.1%	6,325	76.9%	11,957	2,567	21.5%	9,390	78.5%

Note: In every investigation there may be multiple allegations of maltreatment for one or more children. In counties with small populations, very small numbers in any category may render suspect any data collected during the period under review.

Source: SM06a01



PENDING INVESTIGATIONS: DECEMBER 2007

County	Reports Without An Investigation After 30 days		Pending Over 30 Days						Pending Less Than 30 Days		
	11/07	12/07	Baseline 11/04 Total	11/07 Total	12/07 Total	Priority Levels 12/07			Baseline 11/04 Total	11/07 Total	12/07 Total
						E	P1	P2			
Valencia	0	0	462	107	15	2	3	10	67	35	19
Region Total	0	0	1,297	389	217	18	50	149	286	186	169
State Total	3	2	4,917	1,614	1,165	98	239	828	1,296	1,141	900

Source : SM06a01

VALENCIA COUNTY (REGION 1/ARLEEN LUCERO)

CHILDREN IN AN OUT OF HOME PLACEMENT FOR MORE THAN TEN DAYS WITH AN INITIAL EPSDT¹ EXAMINATION 2ND QUARTER SFY 08



County	Children With Initial EPSDT Exam During Reporting Period		Children Without Initial EPSDT Exam During Reporting Period		Total Children in Out of Home Placement Greater Than 10 Days ²	Children with Initial EPSDT Within 30 Days	
	#	%	#	%	#	#	%
Valencia	2	40.0%	3	60.0%	5	0	0.0%
Region Total	19	38.0%	31	62.0%	50	16	32.0%
State Total	144	49.8%	145	50.2%	289	127	43.9%

1. EPSDT = Early and Periodic Screening, Diagnosis and Treatment Medicaid Medical Visits.

2. Report counts all children entering care during the parameter period and remaining in care more than 10 days.

Source: SM10a36

ADOPTION AND ADOLESCENT RESOURCE TEAM –2ND QUARTER SFY 08

	ADOPTION MEASURES NOT ACHIEVED	Total Cases	Not Achieved as % of Total Cases
Valencia	2	224	0.9%
Region Total	27	876	3.1%
State Total	67	2,845	2.4%

ADOPTION AND ADOLESCENT RESOURCE TEAM –2ND QUARTER SFY 08

	INDEPENDENT LIVING MEASURES NOT ACHIEVED	Total Cases	Not Achieved as % of Total Cases
Valencia	1	45	2.2%
Region Total	16	266	6.0%
State Total	27	1,125	2.4%

Source: JTS Database

Permanency Worker Case Weights SM0904 December 2007 Monthly Report

County	Number of Children in Custody as of 12/31/07	Number of Permanency Worker Positions as of 12/31/07	Number of Children per Permanency Worker as of 12/07
Valencia	119	6	19.8
State Total	554	30.5	18.2
Region Total	2,508	147.5	17.0

Source: December Monthly 2007 SM0904

FTE Position Responsible for Permanency Planning
Includes 110 Children w/No Plan

Investigation Worker Case Weight Report CY 2007

County	# of PS Investigation Worker Positions	Total # PS Accepted Reports 2007	Total # PS Completed Investigations 2006	Total # PS Completed Investigations 2007	% of Increase/Decrease in Investigations from CY06	Pending Investigation over 30 days 12/07	CY07 Avg Investigations Completed per Yr per worker	CY07 Avg Investigations Completed per Mo per worker
Valencia	5.0	664	678	880	29.8%	15	176.0	14.7
State Total	26.5	2,992	3,275	3,394	3.6%	217	128.1	10.7
Region Total	132.5	15,424	16,116	16,005	-0.7%	1,065	120.8	10.1

Source: SM01a02

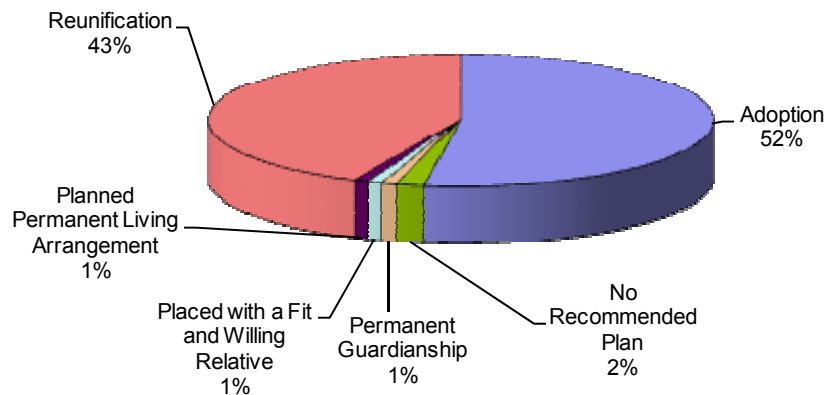
POINT IN TIME MEASURES: DECEMBER 31, 2007

County Valencia	Number	Region Total	State Total	% of State Total
NUMBER OF CHILDREN IN CARE (SM0907)	104	523	2,455	4.24%
• AVERAGE LENGTH OF STAY IN FOSTER CARE (IN MONTHS - END QTR) (SM0907)	40.4		21.3	
NUMBER OF FOSTER CARE PROVIDERS (PM02a01)	44	181	975	4.51%
NUMBER OF ADOPTION PROVIDERS (PM02a01)	29	177	1,427	2.03%
NUMBER OF CHILDREN WITH A PLAN OF ADOPTION (PM02a01)	57	241	935	6.10%
• NUMBER CHILDREN FREED AND WAITING (SM0907)	22	105	553	3.98%
• NUMBER OF CHILDREN FREED AND WAITING (WITH RESOURCES) (SM0803)	4	31	175	2.29%
• NUMBER OF CHILDREN FREED AND WAITING (WITHOUT RESOURCES) (SM0803)	18	74	378	4.76%
PERMANENT PLAN LIVING ARRANGEMENT (SM0904)	1	21	165	0.61%
WORKER VISITS WITH CHILDREN IN CARE (SM08-06)	Coming Soon			

**Permanency Plan Goals of Children in Custody
Valencia County N = 109**

Point In Time December 31, 2007

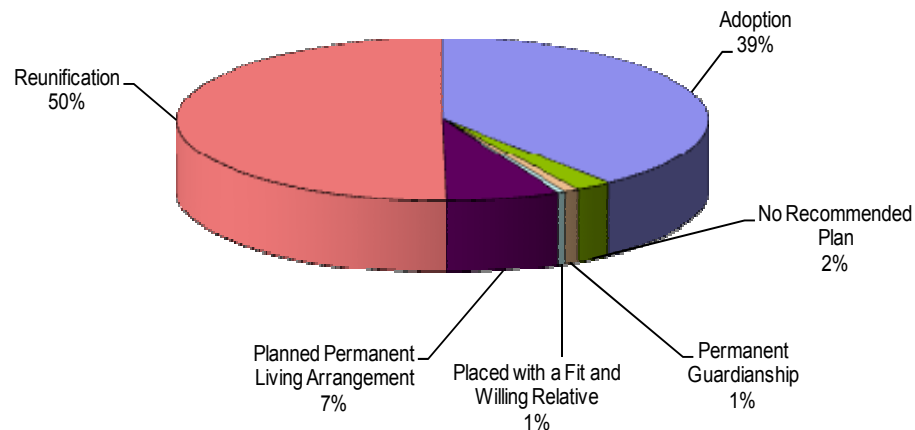
Source: SM0904



**Permanency Plan Goals of Children in Custody
New Mexico N = 2381**

Point In Time December 31, 2007

Source: SM0904



VALENCIA COUNTY (REGION 1/ARLEEN LUCERO)

RECURRENCE OF SUBSTANTIATED MALTREATMENT WITHIN 6 MONTHS OF A PREVIOUSLY SUBSTANTIATED REPORT OF MALTREATMENT

County Valencia	Total # of Maltreatment Victims	# With Recurrence	% With Recurrence
2nd Qtr SFY 08	126	8	6.3%
Region Total	260	15	5.8%
State Total	1,030	78	7.6%

Round 1 Federal National Standard = No more than 6.1%
New Mexico SFY 08 Standard = No more than 7.0%

Source: SM0907

CHILDREN REENTERING CARE WITHIN TWELVE MONTHS OF A PRIOR EPISODE

County Valencia	Total Entering Care #	# Reentering Within 12 Months	% Reentering Within 12 Months
2nd Qtr SFY 08	17	5	29.4%
Region Total	114	16	14.0%
State Total	535	76	14.2%

Round 1 Federal National Standard = No More than 8.6%
New Mexico SFY 08 Standard = No Standard

Source: SM0907

Note: SFY = State Fiscal Year. In New Mexico the State Fiscal year is July 1 through June 30 of the following year.

CHILDREN MALTREATED IN FOSTER CARE (PERFORMANCE OVER A ROLLING 12 MONTHS)

County Valencia	Total # of Chil- dren in Care	# Maltreated	% of Maltreated in Foster Care
2nd Qtr SFY 08	145	1	0.69%
Region Total	899	2	0.22%
State Total	4,700	24	0.51%

Round 1 Federal National Standard = No more than 0.57%
New Mexico SFY08 State Standard = No more than 0.57%

Source: SM0907

CHILDREN REUNIFIED IN LESS THAN TWELVE MONTHS OF ENTRY INTO CARE

County Valencia	Total # Reunified	# Reunified less than 12 mos	% Reunified less than 12 mos
2nd Qtr SFY 08	14	11	78.6%
Region Total	68	56	82.4%
State Total	290	236	81.4%

Round 1 Federal National Standard = At or above 76.2%
New Mexico SFY 08 State Standard = At or above 85.0%

Source: SM0907

CHILDREN IN FOSTER CARE FOR UP TO 12 MONTHS WITH NO MORE THAN TWO PLACEMENT SETTING

County Valencia	Total	# With Two or Fewer	% With Two or Fewer
2nd Qtr SFY 08	56	40	71.4%
Region Total	280	235	83.9%
State Total	1,448	1,163	80.3%

Round 1 Federal National Standard = At or Above 86.7%
New Mexico SFY 08 Standard = At or Above 86.7%

Source: SM0907

CHILDREN WITH A FINALIZED ADOPTION WITHIN 24 MONTHS OF ENTRY INTO CARE

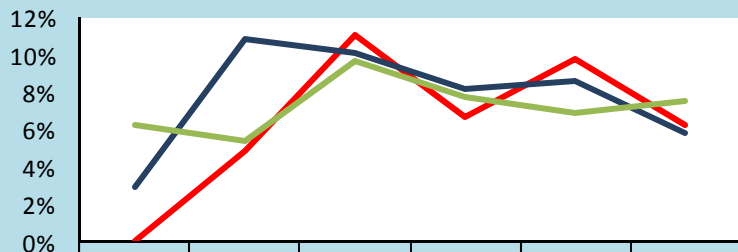
County Valencia	Total # Adopted	# <24 mos.	% <24 mos.
2nd Qtr SFY 08	4	2	50.0%
Region Total	6	2	33.3%
State Total	101	26	25.7%

Round 1 Federal National Standard = at least 32.0%
New Mexico SFY 08 Standard = At least 34.0%

Source: SM0907

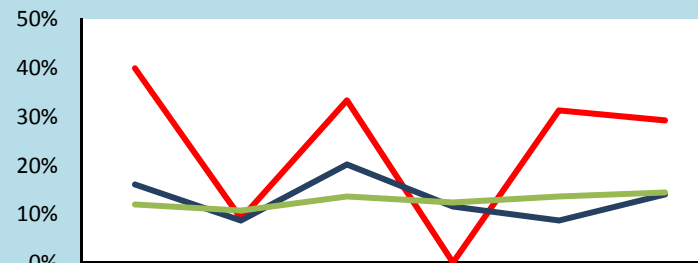
VALENCIA COUNTY (REGION 1/VALREE LOPEZ COUNTY MANGER)

Trends of Recurrence of Substantiated Maltreatment Within 6 Months of a Previously Substantiated Report of Maltreatment
ACF National Standard = 6.1%



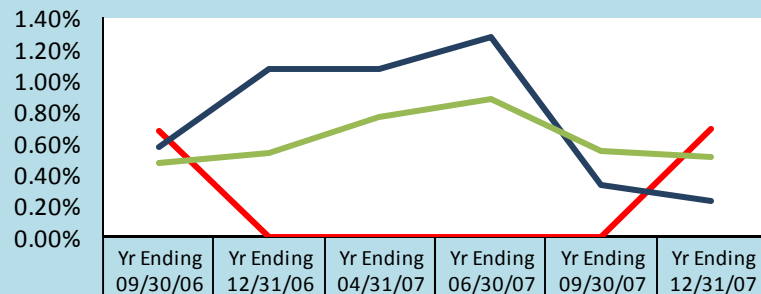
	Q1 SFY07	Q2 SFY07	Q3 SFY07	Q4 SFY07	Q1 SFY08	Q2 SFY08
Valencia	0.0%	4.8%	11.1%	6.7%	9.8%	6.3%
Region Total	2.9%	10.8%	10.0%	8.1%	8.6%	5.8%
State Total	6.3%	5.4%	9.7%	7.8%	6.9%	7.6%

Trends of Children Reentering Care within Twelve Months of A Prior Episode
ACF National Standard = 8.6%



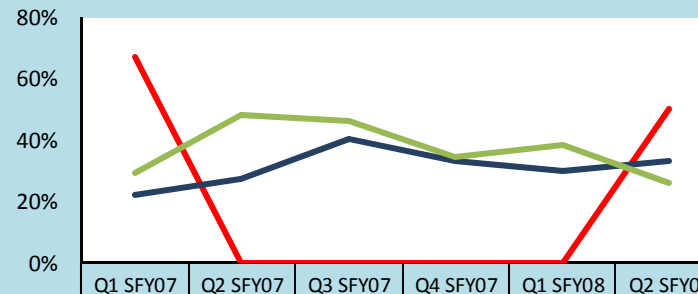
	Q1 SFY07	Q2 SFY07	Q3 SFY07	Q4 SFY07	Q1 SFY08	Q2 SFY08
Valencia	40.0%	9.1%	33.3%	0.0%	31.3%	29.4%
Region Total	16.1%	8.5%	20.2%	11.5%	8.6%	14.0%
State Total	11.6%	10.6%	13.4%	12.1%	13.6%	14.2%

Trends of Children Maltreated in Foster Care (performance over Rolling 12 Months)
ACF National Standard = 0.57%



	Yr Ending 09/30/06	Yr Ending 12/31/06	Yr Ending 04/31/07	Yr Ending 06/30/07	Yr Ending 09/30/07	Yr Ending 12/31/07
Valencia	0.68%	0.00%	0.00%	0.00%	0.00%	0.69%
Region Total	0.57%	1.07%	1.07%	1.28%	0.32%	0.22%
State Total	0.47%	0.54%	0.76%	0.88%	0.55%	0.51%

Trends of Children With a Finalized Adoption Within 24 Months of Entry Into Care
ACF National Standard = 32.0%



	Q1 SFY07	Q2 SFY07	Q3 SFY07	Q4 SFY07	Q1 SFY08	Q2 SFY08
Valencia	66.7%	0.0%	0.0%	0.0%	0.0%	50.0%
Region Total	22.2%	27.3%	40.0%	33.3%	30.0%	33.3%
State Total	28.8%	48.2%	46.3%	34.4%	38.0%	25.7%

Note: The reader should note that in the instance of existing children maltreated in Foster Care, cases are carried forward in the calculation for 12 rolling months. Thus trend data will display the existing cases for 12 consecutive months. For this reason elevated levels across multiple quarter may not indicate new cases for this measure.