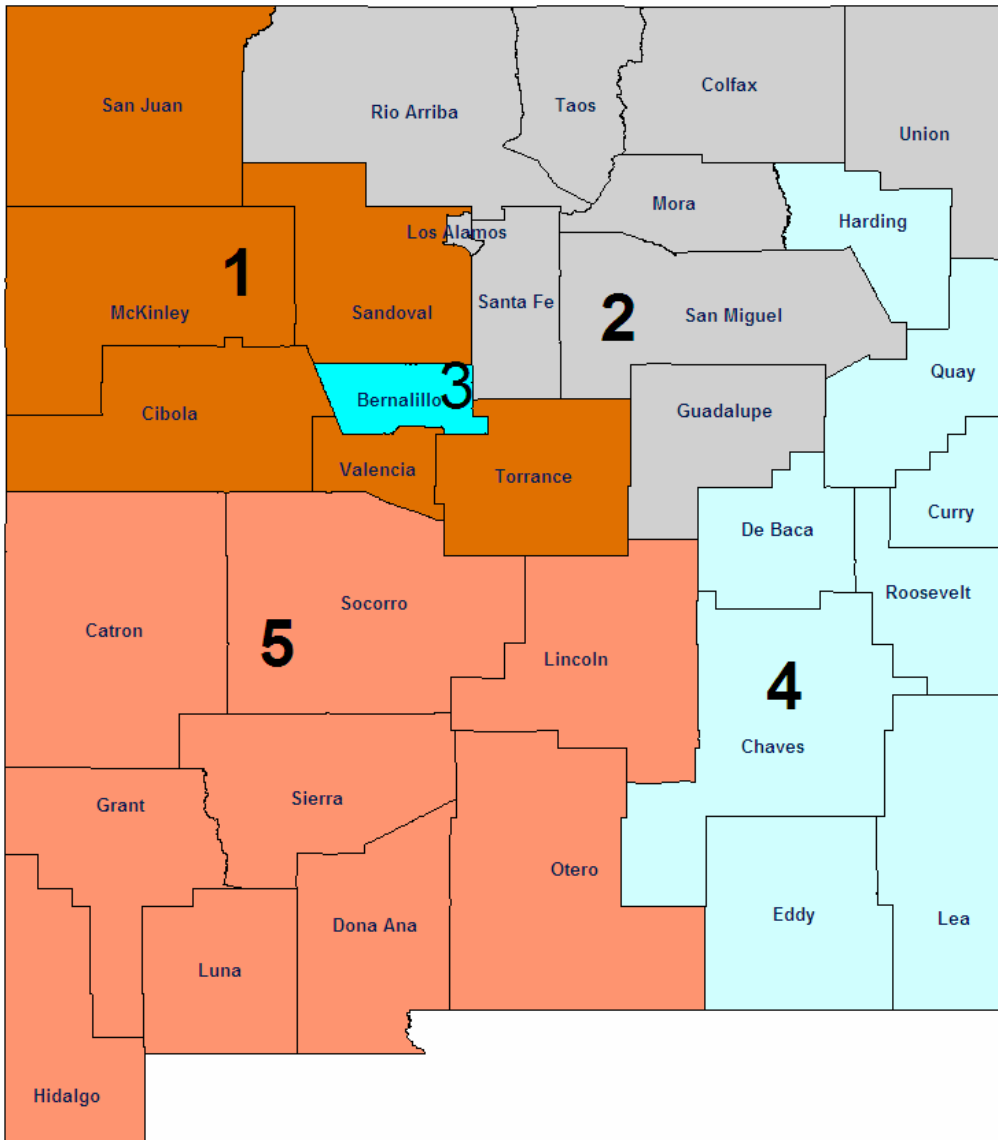


Protective Services *360 Degrees* County Profiles



Protective Services Director's Office
 (505) 827-8400 www.cyfd.org

Angela Adams, Director
 Maryellen Bearzi Administrative Deputy Director

Francine Anaya, Clinical Deputy Director
 (505) 758-8871

Region 1

David Montoya (505)867-2373

Region 2

Linda McNall (505)827-7450

Region 4

Don Holden (505)356-6688

Region 5

Nick Dagonos (505)524-6400

Lisa Madrid-Schleicher, (Acting) Clinical Deputy Director
 (505) 841-7800

Region 3

Michelle Herrera, (Acting) (505)841-8400





Protective Services Initiatives

Children, Youth and Families

Vision

The Children, Youth and Families Department partners with communities to strengthen families in New Mexico to be productive and self-sufficient.

Mission

CYFD believes in the strengths and resiliency of families who are our partners and for whom we advocate to enhance their safety and well-being. We respectfully serve and support children and families and supervise youth in responsive, community-based system of care that is client-centered, family-focused and culturally competent.

- To continue efforts ensuring timely response to reports of maltreatment, enhancing voluntary services to at risk families, providing safe homes for children in out-of-home care, and working with families to address the risk issues that contribute to child maltreatment
- To improve outcomes addressing the unique need of older youth in faster care in the areas of education, financial assistance and housing
- To enhance visitation with children in foster care through staff training, tracking mechanisms and quality assurance reviews
- To expand foster and adoptive family recruitment efforts to increasing the number of placement resources available for children needing homes
- To partner with the New Mexico Court Improvement Project and the courts to expedite permanency for children by reducing delays, minimizing the need for continuances, expediting appeals and enhancing the quality of representation
- To facilitate the active engagement of parents, foster parents and youth in case planning through Team Decision Making, adoption mediation, video conference and increasing the participation of incarcerated parents



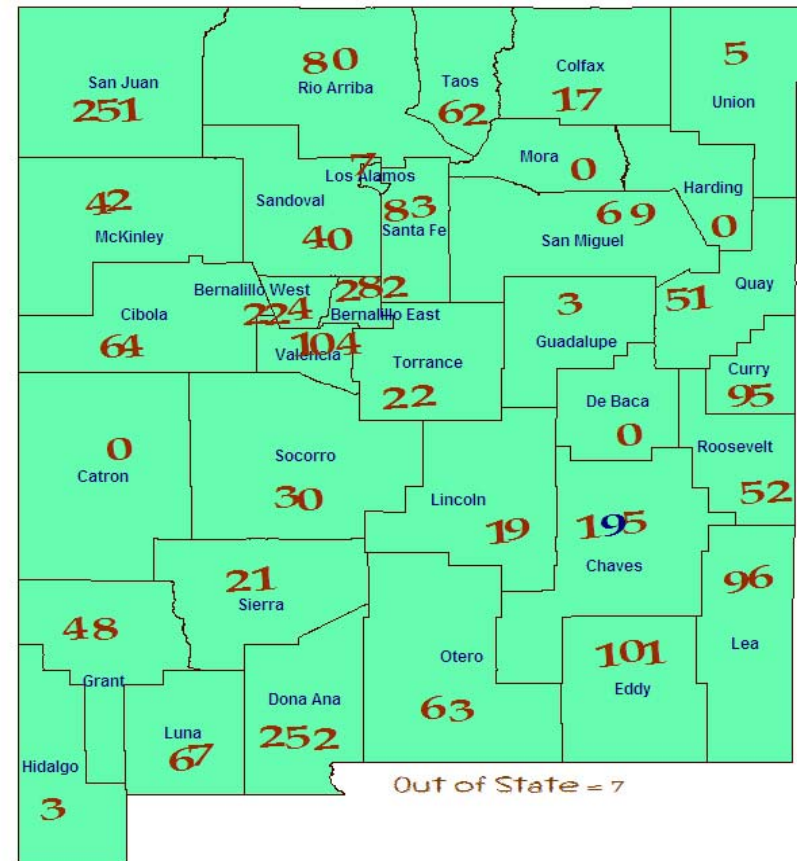
Did You Know???

Protective Services
Children In Care
As of December 31, 2007

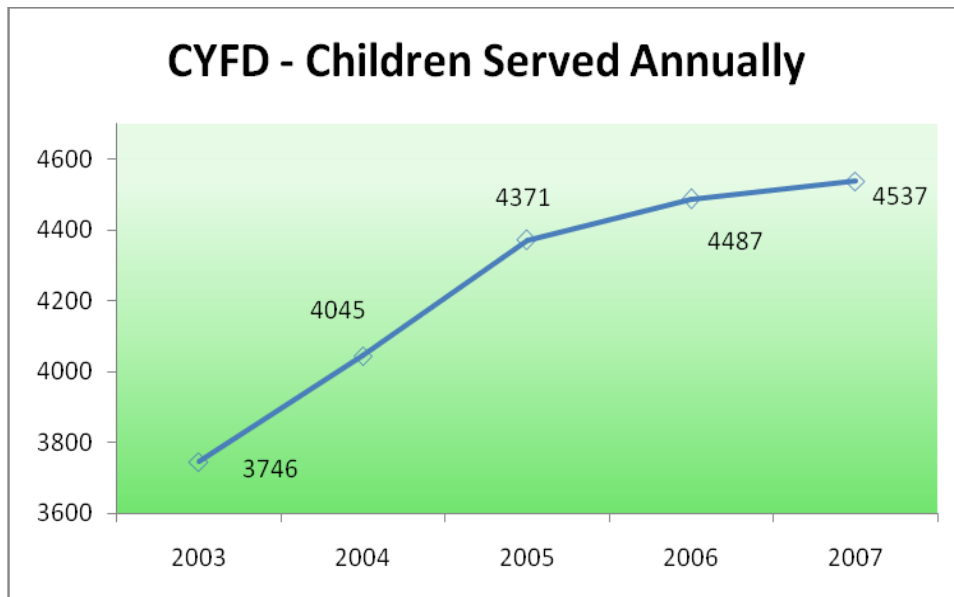
Did You Know?

Based on the December 31, 2007 point in time calculation, there were 2,455 children and 975 foster care providers. New Mexico needs more foster care providers, especially in rural areas. For more information on fostering a New Mexico child go to: www.cyfd.org/foster.html.

For the year ending December 31, 2007 there were a total of 4,537 served by the child welfare system in New Mexico. Since 2003 there has been a 21% increase in the total children served annually, indicating a growing pressure on the entire child welfare system.



Source: SM0907



Source: SM0907

CHAVES COUNTY (REGION 4/VIRGINIA VILLAREAL COUNTY MANAGER)

According to the US Census in 2005, Chaves County attained an overall population of 61,382 or 3.31% of the state's total population. There were 17,864 children in the county in 2005; this represents 3.49% of the state's total children under 18. While the whole county accounts for **3.49%** of the state's total children under 18, Chaves County had **7.94%** of the state's total children in care as of December 31, 2007.

	Race and Ethnicity			
	Chaves ¹		Total Population ²	
	Children Under 19 yrs	Children Under 19 yrs of Hispanic Origin	Chaves	New Mexico
Total Population	18,518	10,960	61,382	1,854,938
White	93.3%	96.3%	72.0%	66.8%
Black	2.8%	1.5%	2.0%	1.9%
American Indian or Alaskan Native	1.4%	0.9%	1.1%	9.5%
Asian	0.1%	0.1%	0.5%	1.1%
Native Hawaiian or Other Pacific Islander	0.1%	0.1%	0.1%	0.1%
Some other Race	1.7%	1.0%	21.2%	17.0%
Hispanic or Latino			43.8%	42.1%
Under 18 yrs			17,864	511,768
% of Families Living under the poverty Level			17.6%	14.5%

1. Source: U.S. Census Bureau, Population Division/Bureau of Business and Economic Research, Univ. of New Mexico.
 2. Source: U.S. Census Bureau/State and County QuickFACTS

Children In Care End 12/31/07 Chaves County		
HISPANIC	No	Yes
Percentage	26.2%	73.8%

RACE	Total	%
Asian	2	0.08%
Black or African American	7	0.29%
Unable to Determine	1	0.04%
White	185	7.54%

Source: SM0907



Age of Children in Care End 12/31/07													
County	< 1 yr		1 - 5 yrs		6 - 10 yrs		11 - 15 yrs		16 - 17 yrs		18+ yrs	Total	
	%	#	%	#	%	#	%	#	%	#			
Chaves	6%	12	36%	70	25%	49	20%	39	10%	20	3%	6	195
Region Total	5%	32	36%	213	22%	131	20%	118	12%	69	5%	27	590
State Total	2%	49	34%	835	33%	810	21%	516	6%	147	4%	98	2,455

Source: SM0907

CHAVES COUNTY (REGION 4/VIRGINIA VILLAREAL COUNTY MANAGER)

PROTECTIVE SERVICES REPORTS AND INVESTIGATIONS - QUARTER 2 SFY 08: OCTOBER - DECEMBER 2007

County	Accepted Reports	Investigations						County % of State Total Investigations ¹	Number of Children Victims	Victim Rate ² per 1,000 children
		Substantiated	Unsubstantiated	Total Investigations		Substantiated	Unsubstantiated			
Chaves	162	52	31.9%	111	68.1%	163	3.7%	90	20.2	
Region Total	608	207	32.1%	438	67.9%	645	14.6%	336	18.8	
State Total	3,748	1,041	23.6%	3,362	76.4%	4,403	100.0%	1,589	12.4	

Note: Not all "accepted reports" result in investigations completed during the period under review.

- Both County and Regional data are calculated as a % of the State's total investigations for the period under review.
- For the quarterly *360 Degrees* County Profiles Report this information is calculated by annualizing the quarterly data. For the SFY Annual *360 Degrees* County Profiles Report this information is calculated, based on four quarters of reported data.

Source: SM01a02 and SM06a01

HOW ARE WE DOING?
By comparing "total investigations" for the quarter with "accepted reports" for the quarter, you can get a **sense** of work flow. To get a further sense of work flow, also review the cases with a "pending over 30 days" status and the case weight information for each county.

CPS ALLEGATION TYPES OF CHILD MALTREATMENT - QUARTER 2 SFY 08: OCTOBER - DECEMBER 2007

County	Physical Abuse					Sexual Abuse					Physical Neglect					Totals				
	Total	Substantiated	Unsubstantiated	Total	Substantiated	Unsubstantiated	Total	Substantiated	Unsubstantiated	Total	Substantiated	Unsubstantiated	Total	Substantiated	Unsubstantiated					
Chaves	89	29	32.6%	60	67.4%	6	1	16.7%	5	83.3%	381	103	27.0%	278	73.0%	476	133	27.9%	343	72.1%
Region Total	455	119	26.2%	336	73.8%	37	6	16.2%	31	83.8%	1,391	411	29.5%	980	70.5%	1,883	536	28.5%	1,347	71.5%
State Total	3,347	614	18.3%	2,733	81.7%	385	53	13.8%	332	86.2%	8,225	1,900	23.1%	6,325	76.9%	11,957	2,567	21.5%	9,390	78.5%

Note: In every investigation there may be multiple allegations of maltreatment for one or more children. In counties with small populations, very small numbers in any category may render suspect any data collected during the period under review.

Source: SM06a01



PENDING INVESTIGATIONS: DECEMBER 2007

County	Reports Without An Investigation After 30 days		Pending Over 30 Days						Pending Less Than 30 Days		
	11/07	12/07	Baseline 11/04 Total	11/07 Total	12/07 Total	Priority Levels 12/07			Baseline 11/04 Total	11/07 Total	12/07 Total
						E	P1	P2			
Chaves	0	0	174	3	2	0	1	1	46	42	46
Region Total	2	0	426	94	73	5	15	53	228	171	167
State Total	3	2	4917	1614	1165	98	239	828	1296	1141	900

Source : SM06a01

CHAVES COUNTY (REGION 4/VIRGINIA VILLAREAL COUNTY MANAGER)

CHILDREN IN AN OUT OF HOME PLACEMENT FOR MORE THAN TEN DAYS WITH AN INITIAL EPSDT¹ EXAMINATION 2ND QUARTER SFY 08



County	Children With Initial EPSDT Exam During Reporting Period		Children Without Initial EPSDT Exam During Reporting Period		Total Children in Out of Home Placement Greater Than 10 Days ²	Children with Initial EPSDT Within 30 Days	
	#	%	#	%	#	#	%
Chaves	21	75.0%	7	25.0%	28	20	71.4%
Region Total	35	49.3%	36	50.7%	71	32	45.1%
State Total	144	49.8%	145	50.2%	289	127	43.9%

1. EPSDT = Early and Periodic Screening, Diagnosis and Treatment Medicaid Medical Visits.

2. Report counts all children entering care during the parameter period and remaining in care more than 10 days.

Source: SM10a36

ADOPTION AND ADOLESCENT RESOURCE TEAM –2ND QUARTER SFY 08

	ADOPTION MEASURES NOT ACHIEVED	Total Cases	Not Achieved as % of Total Cases
Chaves	0	152	0.0%
Region Total	3	493	0.6%
State Total	67	2,845	2.4%

ADOPTION AND ADOLESCENT RESOURCE TEAM –2ND QUARTER SFY 08

	INDEPENDENT LIVING MEASURES NOT ACHIEVED	Total Cases	Not Achieved as % of Total Cases
Chaves	0	58	0.0%
Region Total	6	290	2.1%
State Total	27	1,125	2.4%

Source: JTS Database

Permanency Worker Case Weights SM0904 December 2007 Monthly Report

County	Number of Children in Custody as of 12/31/07	Number of Permanency Worker Positions as of 12/31/07	Number of Children per Permanency Worker as of 12/07
Chaves	188	9	20.9
State Total	593	29	20.4
Region Total	2,508	147.5	17.0

Source: December Monthly 2007 SM0904

FTE Position Responsible for Permanency Planning
Includes 110 Children w/No Plan

Investigation Worker Case Weight Report CY 2007

Total # PS Completed Investigations 2006	Total # PS Completed Investigations 2007	% of Increase/Decrease in Investigations from CY06	Pending Investigation over 30 days 12/07	CY07 Avg Investigations Completed per Yr per worker	CY07 Avg Investigations Completed per Mo per worker
855	693	-18.9%	2	99.0	8.3
3,040	2,709	-10.9%	73	108.4	9.0
16,116	16,005	-0.7%	1,065	120.8	10.1

Source: SM01a02

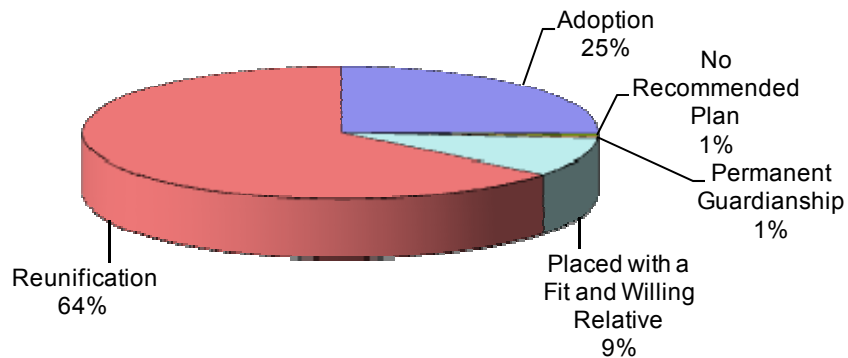
CHAVES COUNTY (REGION 4/VIRGINIA VILLAREAL COUNTY MANAGER)

POINT IN TIME MEASURES: DECEMBER 31, 2007

County Chaves	Number	Region Total	State Total	% of State Total
NUMBER OF CHILDREN IN CARE (SM0907)	195	590	2455	7.94%
• AVERAGE LENGTH OF STAY IN FOSTER CARE (IN MONTHS - END QTR) (SM0907)	16.1		21.3	
NUMBER OF FOSTER CARE PROVIDERS (PM02a01)	68	195	975	6.97%
NUMBER OF ADOPTION PROVIDERS (PM02a01)	68	180	1427	4.77%
NUMBER OF CHILDREN WITH A PLAN OF ADOPTION (PM02a01)	46	159	935	4.92%
• NUMBER CHILDREN FREED AND WAITING (SM0907)	38	121	553	6.87%
• NUMBER OF CHILDREN FREED AND WAITING (WITH RESOURCES) (SM0803)	20	45	175	11.43%
• NUMBER OF CHILDREN FREED AND WAITING (WITHOUT RESOURCES) (SM0803)	18	76	378	4.76%
PERMANENT PLAN LIVING ARRANGEMENT (SM0904)	17	50	165	10.30%
WORKER VISITS WITH CHILDREN IN CARE (SM08-06)	Coming Soon			

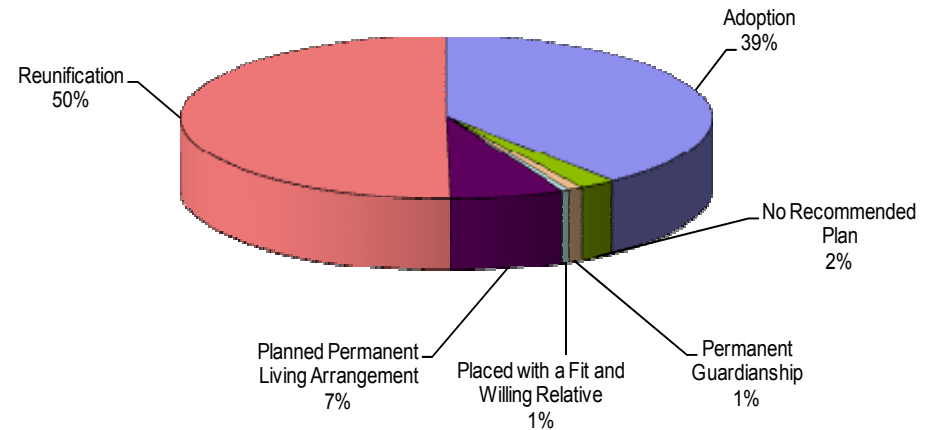
**Permanency Plan Goals of Children in Custody
Chaves County N = 182
Point In Time December 31, 2007**

Source: SM0904



**Permanency Plan Goals of Children in Custody
New Mexico N = 2381
Point In Time December 31, 2007**

Source: SM0904



CHAVES COUNTY (REGION 4/VIRGINIA VILLAREAL COUNTY MANAGER)

RECURRENCE OF SUBSTANTIATED MALTREATMENT WITHIN 6 MONTHS

OF A PREVIOUSLY SUBSTANTIATED REPORT OF MALTREATMENT

County Chaves	Total # of Maltreatment Victims	# With Recurrence	% With Recurrence
2nd Qtr SFY 08	102	3	2.9%
Region Total	291	17	5.8%
State Total	1,030	78	7.6%

Round 1 Federal National Standard = No more than 6.1%
New Mexico SFY 08 Standard = No more than 7.0%

Source: SM0907

CHILDREN REENTERING CARE WITHIN TWELVE MONTHS OF A PRIOR EPISODE

County Chaves	Total Entering Care #	# Reentering Within 12 Months	% Reentering Within 12 Months
2nd Qtr SFY 08	56	9	16.1%
Region Total	110	17	15.5%
State Total	535	76	14.2%

Round 1 Federal National Standard = No More than 8.6%
New Mexico SFY 08 Standard = No Standard

Source: SM0907

Note: SFY = State Fiscal Year. In New Mexico the State Fiscal year is July 1 through June 30 of the following year.

CHILDREN MALTREATED IN FOSTER CARE (PERFORMANCE OVER A ROLLING 12 MONTHS)

County Chaves	Total # of Children in Care	# Maltreated	% of Maltreated in Foster Care
2nd Qtr SFY 08	383	3	0.78%
Region Total	1,024	5	0.49%
State Total	4,700	24	0.51%

Round 1 Federal National Standard = No more than 0.57%
New Mexico SFY08 State Standard = No more than 0.57%

Source: SM0907

CHILDREN REUNIFIED IN LESS THAN TWELVE MONTHS OF ENTRY INTO CARE

County Chaves	Total # Reunified	# Reunified less than 12 mos	% Reunified less than 12 mos
2nd Qtr SFY 08	35	27	77.1%
Region Total	50	44	88.0%
State Total	290	236	81.4%

Round 1 Federal National Standard = At or above 76.2%
New Mexico SFY 08 State Standard = At or above 85.0%

Source: SM0907

CHILDREN IN FOSTER CARE FOR UP TO 12 MONTHS WITH NO MORE THAN TWO PLACEMENT SETTING

County Chaves	Total	# With Two or Fewer	% With Two or Fewer
2nd Qtr SFY 08	129	92	71.32%
Region Total	342	259	75.73%
State Total	1,448	1,163	80.32%

Round 1 Federal National Standard = At or Above 86.7%
New Mexico SFY 08 Standard = At or Above 86.7%

Source: SM0907

CHILDREN WITH A FINALIZED ADOPTION WITHIN 24 MONTHS OF ENTRY INTO CARE

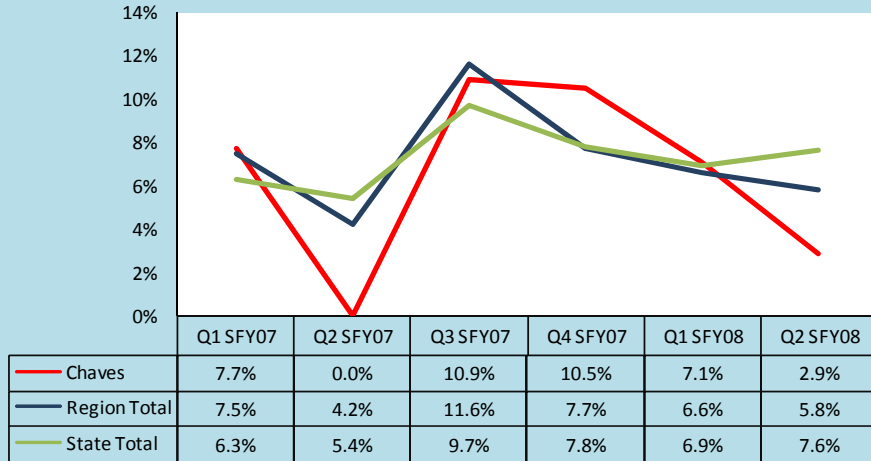
County Chaves	Total # Adopted	# <24 mos.	% <24 mos.
2nd Qtr SFY 08	17	4	23.5%
Region Total	35	6	17.1%
State Total	101	26	25.7%

Round 1 Federal National Standard = at least 32.0%
New Mexico SFY 08 Standard = At least 34.0%

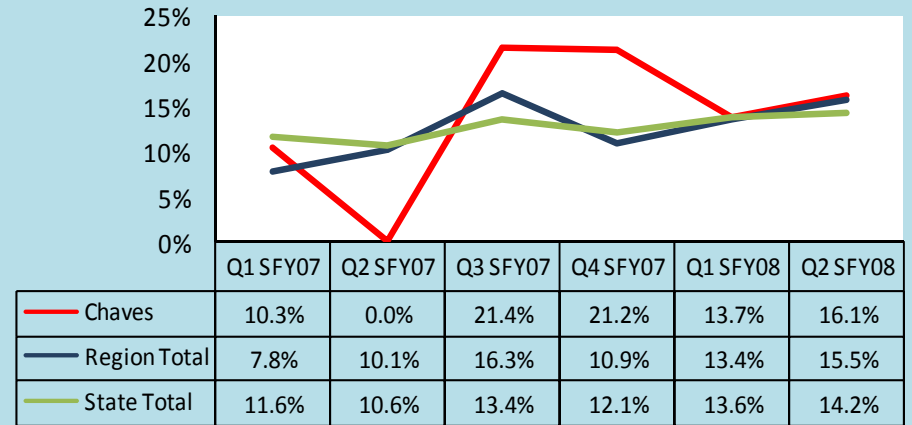
Source: SM0907

CHAVES COUNTY (REGION 4/VIRGINIA VILLAREAL COUNTY MANAGER)

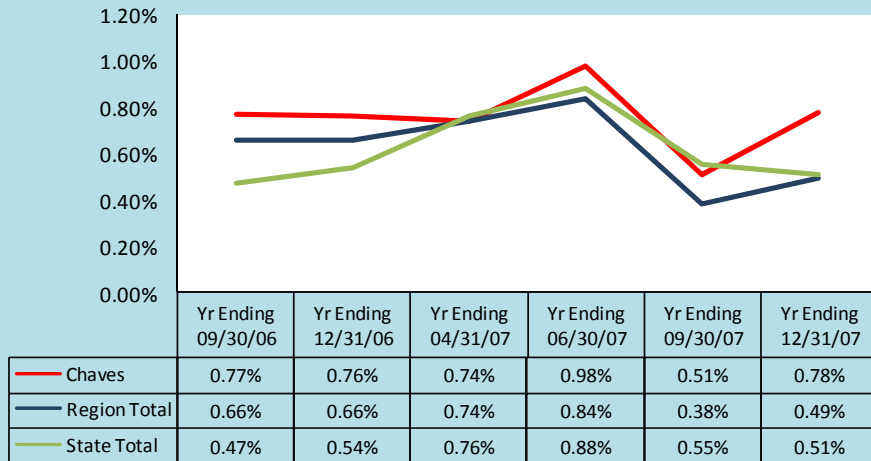
Trends of Recurrence of Substantiated Maltreatment Within 6 Months of a Previously Substantiated Report of Maltreatment
ACF National Standard = 6.1%



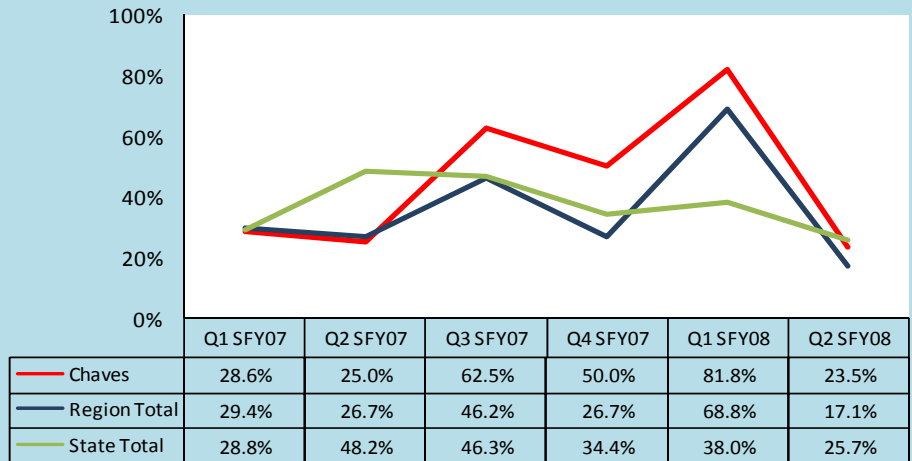
Trends of Children Reentering Care within Twelve Months of A Prior Episode
ACF National Standard = 8.6%



Trends of Children Maltreated in Foster Care (performance over Rolling 12 Months)
ACF National Standard = 0.57%



Trends of Children With a Finalized Adoption Within 24 Months of Entry Into Care
ACF National Standard = 32.0%



Note: The reader should note that in the instance of existing children maltreated in Foster Care, cases are carried forward in the calculation for 12 rolling months. Thus trend data will display the existing cases for 12 consecutive months. For this reason elevated levels across multiple quarter may not indicate new cases for this measure.

CURRY COUNTY (REGION 4/PATTY SAYLOR COUNTY MANGER)

According to the US Census in 2005, Curry County attained an overall population of 45,846 or 2.4% of the state's total population. There were 13,387 children in the county in 2005; this represents 2.7% of the state's total children under 18. While the whole county accounts for **2.7%** of the state's total children under 18, Curry County had **3.87%** of the state's total children in care as of December 31, 2007.

	Race and Ethnicity			
	Curry ¹		Total Population ²	
	Children Under 19 yrs	Children Under 19 yrs of Hispanic Origin	Curry	New Mexico
Total Population	14,675	6,115	45,044	1,854,938
White	83.2%	92.2%	72.4%	66.8%
Black	8.5%	4.0%	6.9%	1.9%
American Indian or Alaskan Native	1.3%	1.1%	1.0%	9.5%
Asian	0.2%	0.1%	1.8%	1.1%
Native Hawaiian or Other Pacific Islander	0.2%	0.1%	0.1%	0.1%
Some other Race	4.6%	2.1%	14.1%	17.0%
Hispanic or Latino			30.4%	42.1%
Under 18 yrs			13,561	511,768
% of Families Living under the poverty Level			15.5%	14.5%

1. Source: U.S. Census Bureau, Population Division\Bureau of Business and Economic Research, Univ. of New Mexico.
 2. Source: U.S. Census Bureau\State and County QuickFACTS

Children In Care End 12/31/07 Curry County			
HISPANIC	No	Yes	
Percentage	36.8%	63.2%	
RACE		Total	%
Black or African American		16	0.65%
Unable to Determine		1	0.04%
White		78	3.18%

Source: SM0907



Age of Children in Care End 12/31/07													
County	< 1 yr		1 - 5 yrs		6 - 10 yrs		11 - 15 yrs		16 - 17 yrs		18+ yrs		Total
	%	#	%	#	%	#	%	#	%	#	%	#	
Curry	4%	4	38%	36	21%	20	20%	19	11%	10	6%	6	95
Region Total	5%	32	36%	213	22%	131	20%	118	12%	69	5%	27	590
State Total	2%	49	34%	835	33%	810	21%	516	6%	147	4%	98	2,455

Source: SM0907

CURRY COUNTY (REGION 4/PATTY SAYLOR COUNTY MANGER)

PROTECTIVE SERVICES REPORTS AND INVESTIGATIONS - QUARTER 2 SFY 08: OCTOBER - DECEMBER 2007

County	Accepted Reports	Investigations						County % of State Total Investigations ¹	Number of Children Victims	Victim Rate ² per 1,000 children
		Substantiated		Unsubstantiated		Total Investigations				
Curry	105	53	40.5%	78	59.5%	131	3.0%	89	26.3	
Region Total	608	207	32.1%	438	67.9%	645	14.6%	336	18.8	
State Total	3,748	1,041	23.6%	3,362	76.4%	4,403	100.0%	1,589	12.4	

Note: Not all "accepted reports" result in investigations completed during the period under review.

- Both County and Regional data are calculated as a % of the State's total investigations for the period under review.
- For the quarterly *360 Degrees* County Profiles Report this information is calculated by annualizing the quarterly data. For the SFY Annual *360 Degrees* County Profiles Report this information is calculated, based on four quarters of reported data.

Source: SM01a02 and SM06a01

HOW ARE WE DOING?
By comparing "total investigations" for the quarter with "accepted reports" for the quarter, you can get a **sense** of work flow. To get a further sense of work flow, also review the cases with a "pending over 30 days" status and the case weight information for each county.

CPS ALLEGATION TYPES OF CHILD MALTREATMENT - QUARTER 2 SFY 08: OCTOBER - DECEMBER 2007

County	Physical Abuse				Sexual Abuse				Physical Neglect				Totals							
	Total	Substantiated	Unsubstantiated		Total	Substantiated	Unsubstantiated		Total	Substantiated	Unsubstantiated		Total	Substantiated	Unsubstantiated					
Curry	109	26	23.9%	83	76.1%	7	0	0.0%	7	100.0%	289	97	33.6%	192	66.4%	405	123	30.4%	282	69.6%
Region Total	455	119	26.2%	336	73.8%	37	6	16.2%	31	83.8%	1,391	411	29.5%	980	70.5%	1,883	536	28.5%	1,347	71.5%
State Total	3,347	614	18.3%	2,733	81.7%	385	53	13.8%	332	86.2%	8,225	1,900	23.1%	6,325	76.9%	11,957	2,567	21.5%	9,390	78.5%

Note: In every investigation there may be multiple allegations of maltreatment for one or more children. In counties with small populations, very small numbers in any category may render suspect any data collected during the period under review.

Source: SM06a01



PENDING INVESTIGATIONS: DECEMBER 2007

County	Reports Without An Investigation After 30 days		Pending Over 30 Days						Pending Less Than 30 Days		
	11/07	12/07	Baseline 11/04 Total	11/07 Total	12/07 Total	Priority Levels 12/07			Baseline 11/04 Total	11/07 Total	12/07 Total
						E	P1	P2			
Curry	1	0	65	24	20	1	4	15	48	31	26
Region Total	2	0	426	94	73	5	15	53	228	171	167
State Total	3	2	4917	1614	1165	98	239	828	1296	1141	900

Source : SM06a01

CURRY COUNTY (REGION 4/PATTY SAYLOR COUNTY MANGER)



CHILDREN IN AN OUT OF HOME PLACEMENT FOR MORE THAN TEN DAYS WITH AN INITIAL EPSDT¹ EXAMINATION 2ND QUARTER SFY 08

County	Children With Initial EPSDT Exam During Reporting Period		Children Without Initial EPSDT Exam During Reporting Period		Total Children in Out of Home Placement Greater Than 10 Days ²	Children with Initial EPSDT Within 30 Days	
	#	%	#	%	#	#	%
Curry	2	40.0%	3	60.0%	5	2	40.0%
Region Total	35	49.3%	36	50.7%	71	32	45.1%
State Total	144	49.8%	145	50.2%	289	127	43.9%

1. EPSDT = Early and Periodic Screening, Diagnosis and Treatment Medicaid Medical Visits.
2. Report counts all children entering care during the parameter period and remaining in care more than 10 days.

Source: SM10a36

ADOPTION AND ADOLESCENT RESOURCE TEAM –2ND QUARTER SFY 08

	ADOPTION MEASURES NOT ACHIEVED	Total Cases	Not Achieved as % of Total Cases
Curry	3	111	2.7%
Region Total	3	493	0.6%
State Total	67	2,845	2.4%

ADOPTION AND ADOLESCENT RESOURCE TEAM –2ND QUARTER SFY 08

	INDEPENDENT LIVING MEASURES NOT ACHIEVED	Total Cases	Not Achieved as % of Total Cases
Curry	6	66	9.1%
Region Total	6	290	2.1%
State Total	27	1,125	2.4%

Source: JTS Database

Permanency Worker Case Weights SM0904 December 2007 Monthly Report

County	Number of Children in Custody as of 12/31/07	Number of Permanency Worker Positions as of 12/31/07	Number of Children per Permanency Worker as of 12/07
Curry/Roosevelt	143	8	17.9
State Total	593	29	20.4
Region Total	2,508	147.5	17.0

Source: December Monthly 2007 SM0904
FTE Position Responsible for Permanency Planning
Includes 110 Children w/No Plan

Investigation Worker Case Weight Report CY 2007

County	# of PS Investigation Worker Positions	Total # PS Accepted Reports 2007	Total # PS Completed Investigations 2006	Total # PS Completed Investigations 2007	% of Increase/Decrease in Investigations from CY06	Pending Investigation over 30 days 12/07	CY07 Avg Investigations Completed per Yr per worker	CY07 Avg Investigations Completed per Mo per worker
Curry/Roosevelt	6.0	665	736	652	-11.4%	26	108.7	9.1
State Total	25.0	2,684	3,040	2,709	-10.9%	73	108.4	9.0
Region Total	132.5	15,424	16,116	16,005	-0.7%	1,065	120.8	10.1

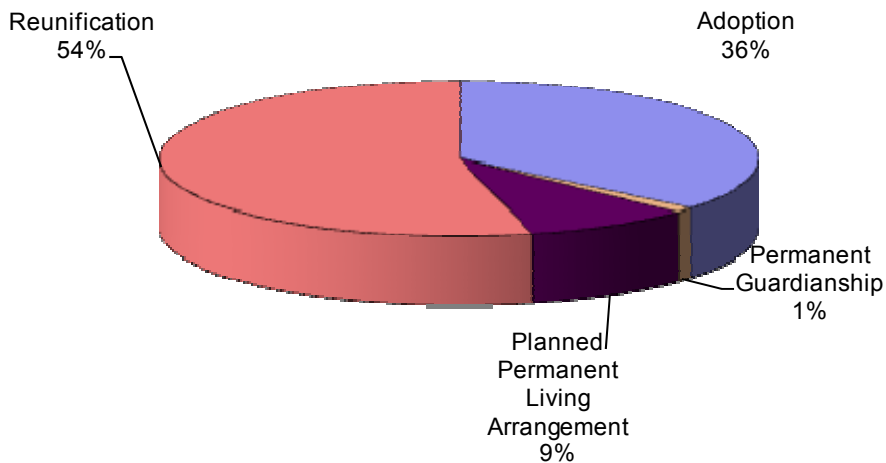
Source: SM01a02

CURRY COUNTY (REGION 4/PATTY SAYLOR COUNTY MANGER)

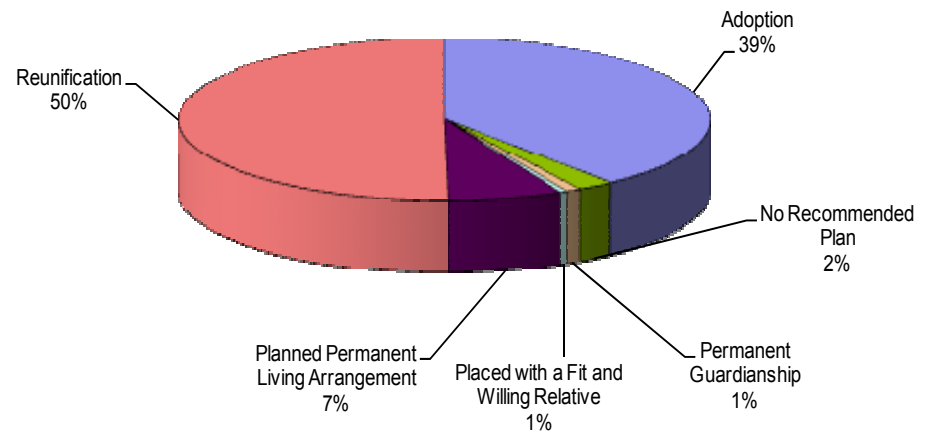
POINT IN TIME MEASURES: DECEMBER 31, 2007

County Curry	Number	Region Total	State Total	% of State Total
NUMBER OF CHILDREN IN CARE (SM0907)	95	590	2,455	3.87%
• AVERAGE LENGTH OF STAY IN FOSTER CARE (IN MONTHS - END QTR) (SM0907)	46.2		21.3	
NUMBER OF FOSTER CARE PROVIDERS (PM02a01)	20	195	975	2.05%
NUMBER OF ADOPTION PROVIDERS (PM02a01)	20	180	1,427	1.40%
NUMBER OF CHILDREN WITH A PLAN OF ADOPTION (PM02a01)	32	159	935	3.42%
• NUMBER CHILDREN FREED AND WAITING (SM0907)	20	121	553	3.62%
• NUMBER OF CHILDREN FREED AND WAITING (WITH RESOURCES) (SM0803)	3	45	175	1.71%
• NUMBER OF CHILDREN FREED AND WAITING (WITHOUT RESOURCES) (SM0803)	17	76	378	4.50%
PERMANENT PLAN LIVING ARRANGEMENT (SM0904)	8	50	165	4.85%
WORKER VISITS WITH CHILDREN IN CARE (SM08-06)	Coming Soon			

Permanency Plan Goals of Children in Custody
Curry County N = 89
Point In Time December 31, 2007
Source: SM0904



Permanency Plan Goals of Children in Custody
New Mexico N = 2381
Point In Time December 31, 2007
Source: SM0904



CURRY COUNTY (REGION 4/PATTY SAYLOR COUNTY MANGER)

RECURRENCE OF SUBSTANTIATED MALTREATMENT WITHIN 6 MONTHS OF A PREVIOUSLY SUBSTANTIATED REPORT OF MALTREATMENT

County Curry	Total # of Maltreatment Victims	# With Recurrence	% With Recurrence
2nd Qtr SFY 08	63	8	12.7%
Region Total	291	17	5.8%
State Total	1,030	78	7.6%

Round 1 Federal National Standard = No more than 6.1%
New Mexico SFY 08 Standard = No more than 7.0%

Source: SM0907

CHILDREN REENTERING CARE WITHIN TWELVE MONTHS OF A PRIOR EPISODE

County Curry	Total Entering Care #	# Reentering Within 12 Months	% Reentering Within 12 Months
2nd Qtr SFY 08	9	0	0.0%
Region Total	110	17	15.5%
State Total	535	76	14.2%

Round 1 Federal National Standard = No More than 8.6%
New Mexico SFY 08 Standard = No Standard

Source: SM0907

Note: SFY = State Fiscal Year. In New Mexico the State Fiscal year is July 1 through June 30 of the following year.

CHILDREN MALTREATED IN FOSTER CARE (PERFORMANCE OVER A ROLLING 12 MONTHS)

County Curry	Total # of Chil- dren in Care	# Maltreated	% of Maltreated in Foster Care
2nd Qtr SFY 08	151	1	0.66%
Region Total	1,024	5	0.49%
State Total	4,700	24	0.51%

Round 1 Federal National Standard = No more than 0.57%
New Mexico SFY08 State Standard = No more than 0.57%

Source: SM0907

CHILDREN REUNIFIED IN LESS THAN TWELVE MONTHS OF ENTRY INTO CARE

County Curry	Total # Reunified	# Reunified less than 12 mos	% Reunified less than 12 mos
2nd Qtr SFY 08	6	5	83.3%
Region Total	50	44	88.0%
State Total	290	236	81.4%

Round 1 Federal National Standard = At or above 76.2%
New Mexico SFY 08 State Standard = At or above 85.0%

Source: SM0907

CHILDREN IN FOSTER CARE FOR UP TO 12 MONTHS WITH NO MORE THAN TWO PLACEMENT SETTING

County Curry	Total	# With Two or Fewer	% With Two or Fewer
2nd Qtr SFY 08	39	27	69.23%
Region Total	342	259	75.73%
State Total	1,448	1,163	80.32%

Round 1 Federal National Standard = At or Above 86.7%
New Mexico SFY 08 Standard = At or Above 86.7%

Source: SM0907

CHILDREN WITH A FINALIZED ADOPTION WITHIN 24 MONTHS OF ENTRY INTO CARE

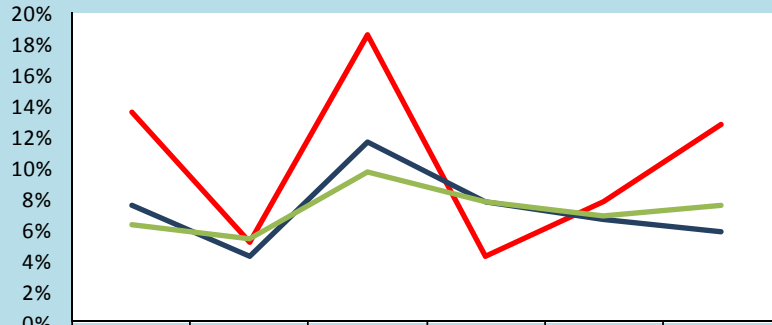
County Curry	Total # Adopted	# <24 mos.	%<24 mos.
2nd Qtr SFY 08	0	0	0.0%
Region Total	35	6	17.1%
State Total	101	26	25.7%

Round 1 Federal National Standard = at least 32.0%
New Mexico SFY 08 Standard = At least 34.0%

Source: SM0907

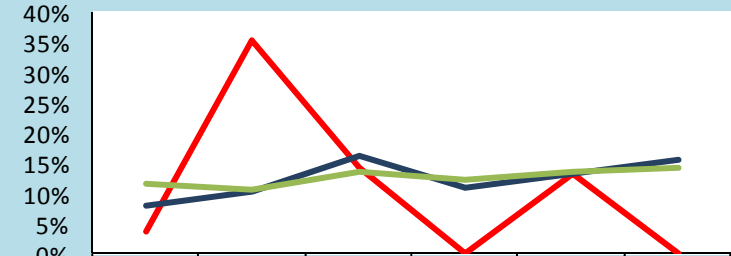
CURRY COUNTY (REGION 4/PATTY SAYLOR COUNTY MANGER)

Trends of Recurrence of Substantiated Maltreatment Within 6 Months of a Previously Substantiated Report of Maltreatment
ACF National Standard = 6.1%



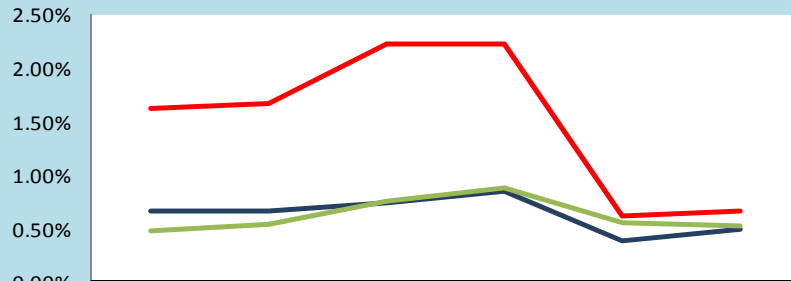
	Q1 SFY07	Q2 SFY07	Q3 SFY07	Q4 SFY07	Q1 SFY08	Q2 SFY08
Curry	13.5%	5.1%	18.5%	4.2%	7.7%	12.7%
Region Total	7.5%	4.2%	11.6%	7.7%	6.6%	5.8%
State Total	6.3%	5.4%	9.7%	7.8%	6.9%	7.6%

Trends of Children Reentering Care within Twelve Months of A Prior Episode
ACF National Standard = 8.6%



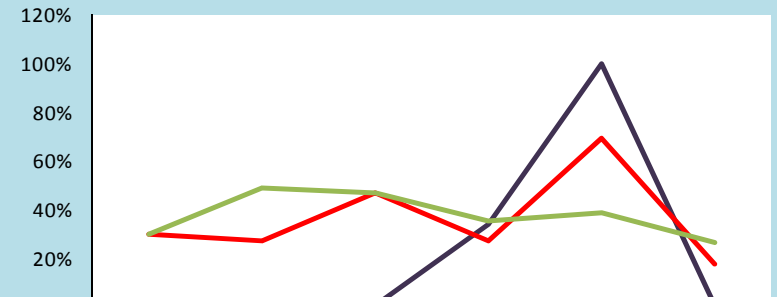
	Q1 SFY07	Q2 SFY07	Q3 SFY07	Q4 SFY07	Q1 SFY08	Q2 SFY08
Curry	3.7%	35.3%	14.3%	0.0%	13.3%	0.0%
Region Total	7.8%	10.1%	16.3%	10.9%	13.4%	15.5%
State Total	11.6%	10.6%	13.4%	12.1%	13.6%	14.2%

Trends of Children Maltreated in Foster Care (performance over Rolling 12 Months)
ACF National Standard = 0.57%



	Yr Ending 09/30/06	Yr Ending 12/31/06	Yr Ending 04/31/07	Yr Ending 06/30/07	Yr Ending 09/30/07	Yr Ending 12/31/07
Curry	1.63%	1.67%	2.23%	2.23%	0.61%	0.66%
Region Total	0.66%	0.66%	0.74%	0.84%	0.38%	0.49%
State Total	0.47%	0.54%	0.76%	0.88%	0.55%	0.51%

Trends of Children With a Finalized Adoption Within 24 Months of Entry Into Care
ACF National Standard = 32.0%



	Q1 SFY07	Q2 SFY07	Q3 SFY07	Q4 SFY07	Q1 SFY08	Q2 SFY08
Curry	0.0%	0.0%	0.0%	33.3%	100.0%	0.0%
Region Total	29.4%	26.7%	46.2%	26.7%	68.8%	17.1%
State Total	28.8%	48.2%	46.3%	34.4%	38.0%	25.7%

Note: The reader should note that in the instance of existing children maltreated in Foster Care, cases are carried forward in the calculation for 12 rolling months. Thus trend data will display the existing cases for 12 consecutive months. For this reason elevated levels across multiple quarter may not indicate new cases for this measure.

DE BACA COUNTY (REGION 4/TOM CASSIDY COUNTY MANGER)

According to the US Census in 2005, De Baca County attained an overall population of 2,240 or 0.12% of the state's total population. There were 540 children in the county in 2005; this represents 0.11% of the state's total children under 18. While the whole county accounts for **0.11%** of the state's total children under 18, De Baca County had **0.0%** of the state's total children in care as of December 31, 2007.

	Race and Ethnicity		Total Population ²	
	De Baca ¹		De Baca	New Mexico
	Children Under 19 yrs	Children Under 19 yrs of Hispanic Origin		
Total Population	434	184	2,240	1,854,938
White	97.2%	97.3%	84.0%	66.8%
Black	0.5%	1.1%	0.0%	1.9%
American Indian or Alaskan Native	1.6%	1.6%	0.9%	9.5%
Asian	0.0%	0.0%	0.2%	1.1%
Native Hawaiian or Other Pacific Islander	0.0%	0.0%	0.0%	0.1%
Some other Race	0.2%	0.0%	12.5%	17.0%
Hispanic or Latino			35.3%	42.1%
Under 18 yrs			540	511,768
% of Families Living under the poverty Level			13.6%	14.5%

1. Source: U.S. Census Bureau, Population Division\Bureau of Business and Economic Research, Univ. of New Mexico.
 2. Source: U.S. Census Bureau\State and County QuickFACTS

Children In Care End 12/31/07 De Baca County		
HISPANIC	No	Yes
Percentage	0.0%	0.0%
RACE	Total	%
	0	0.00%

Source: SM0907



Age of Children in Care End 12/31/07													
County	< 1 yr		1 - 5 yrs		6 - 10 yrs		11 - 15 yrs		16 - 17 yrs		18+ yrs		Total
	%	#	%	#	%	#	%	#	%	#	%	#	
De Baca	0%	0	0%	0	0%	0	0%	0	0%	0	0%	0	0
Region Total	5%	32	36%	213	22%	131	20%	118	12%	69	5%	27	590
State Total	2%	49	34%	835	33%	810	21%	516	6%	147	4%	98	2,455

Source: SM0907

DE BACA COUNTY (REGION 4/TOM CASSIDY COUNTY MANGER)

PROTECTIVE SERVICES REPORTS AND INVESTIGATIONS - QUARTER 2 SFY 08: OCTOBER - DECEMBER 2007

County	Accepted Reports	Investigations							
		Substantiated		Unsubstantiated		Total Investigations	County % of State Total Investigations ¹	Number of Children Victims	Victim Rate ² per 1,000 children
De Baca	5	1	25.0%	3	75.0%	4	0.1%	1	7.4
Region Total	608	207	32.1%	438	67.9%	645	14.6%	336	18.8
State Total	3,748	1,041	23.6%	3,362	76.4%	4,403	100.0%	1,589	12.4

Note: Not all "accepted reports" result in investigations completed during the period under review.

- Both County and Regional data are calculated as a % of the State's total investigations for the period under review.
- For the quarterly *360 Degrees* County Profiles Report this information is calculated by annualizing the quarterly data. For the SFY Annual *360 Degrees* County Profiles Report this information is calculated, based on four quarters of reported data.

Source: SM01a02 and SM06a01

HOW ARE WE DOING?
By comparing "total investigations" for the quarter with "accepted reports" for the quarter, you can get a **sense** of work flow. To get a further sense of work flow, also review the cases with a "pending over 30 days" status and the case weight information for each county.

CPS ALLEGATION TYPES OF CHILD MALTREATMENT - QUARTER 2 SFY 08: OCTOBER - DECEMBER 2007

County	Physical Abuse					Sexual Abuse					Physical Neglect				Totals					
	Total	Substantiated	Unsubstantiated	Total	Substantiated	Unsubstantiated	Total	Substantiated	Unsubstantiated	Total	Substantiated	Unsubstantiated	Total	Substantiated	Unsubstantiated					
De Baca	2	0	0.0%	2	100.0%	1	0	0.0%	1	100.0%	7	1	14.3%	6	85.7%	10	1	10.0%	9	90.0%
Region Total	455	119	26.2%	336	73.8%	37	6	16.2%	31	83.8%	1,391	411	29.5%	980	70.5%	1,883	536	28.5%	1,347	71.5%
State Total	3,347	614	18.3%	2,733	81.7%	385	53	13.8%	332	86.2%	8,225	1,900	23.1%	6,325	76.9%	11,957	2,567	21.5%	9,390	78.5%

Note: In every investigation there may be multiple allegations of maltreatment for one or more children. In counties with small populations, very small numbers in any category may render suspect any data collected during the period under review.

Source: SM06a01



PENDING INVESTIGATIONS: DECEMBER 2007

County	Reports Without An Investigation After 30 days		Pending Over 30 Days						Pending Less Than 30 Days		
	11/07	12/07	Baseline 11/04 Total	11/07 Total	12/07 Total	Priority Levels 12/07			Baseline 11/04 Total	11/07 Total	12/07 Total
						E	P1	P2			
De Baca	0	0	0	0	1	0	0	1	2	1	3
Region Total	2	0	426	94	73	5	15	53	228	171	167
State Total	3	2	4917	1614	1165	98	239	828	1296	1141	900

Source : SM06a01

DE BACA COUNTY (REGION 4/TOM CASSIDY COUNTY MANGER)

CHILDREN IN AN OUT OF HOME PLACEMENT FOR MORE THAN TEN DAYS WITH AN INITIAL EPSDT¹ EXAMINATION 2ND QUARTER SFY 08



County	Children With Initial EPSDT Exam During Reporting Period		Children Without Initial EPSDT Exam During Reporting Period		Total Children in Out of Home Placement Greater Than 10 Days ²	Children with Initial EPSDT Within 30 Days	
	#	%	#	%	#	#	%
De Baca	0	0.0%	0	0.0%	0	0	0.0%
Region Total	35	49.3%	36	50.7%	71	32	45.1%
State Total	144	49.8%	145	50.2%	289	127	43.9%

1. EPSDT = Early and Periodic Screening, Diagnosis and Treatment Medicaid Medical Visits.

2. Report counts all children entering care during the parameter period and remaining in care more than 10 days.

Source: SM10a36

ADOPTION AND ADOLESCENT RESOURCE TEAM –2ND QUARTER SFY 08

	ADOPTION MEASURES NOT ACHIEVED	Total Cases	Not Achieved as % of Total Cases
De Baca	0	0	0.0%
Region Total	3	493	0.6%
State Total	67	2,845	2.4%

ADOPTION AND ADOLESCENT RESOURCE TEAM –2ND QUARTER SFY 08

	INDEPENDENT LIVING MEASURES NOT ACHIEVED	Total Cases	Not Achieved as % of Total Cases
De Baca	0	0	0.0%
Region Total	6	290	2.1%
State Total	27	1,125	2.4%

Source: JTS Database

Permanency Worker Case Weights SM0904 December 2007 Monthly Report

County	Number of Children in Custody as of 12/31/07	Number of Permanency Worker Positions as of 12/31/07	Number of Children per Permanency Worker as of 12/07
De Baca/Harding/Quay	50	1	50.0
State Total	593	29	20.4
Region Total	2,508	147.5	17.0

Source: December Monthly 2007 SM0904

FTE Position Responsible for Permanency Planning
Includes 110 Children w/No Plan

Investigation Worker Case Weight Report CY 2007

	# of PS Investigation Worker Positions	Total # PS Accepted Reports 2007	Total # PS Completed Investigations 2006	Total # PS Completed Investigations 2007	% of Increase/Decrease in Investigations from CY06	Pending Investigation over 30 days 12/07	CY07 Avg Investigations Completed per Yr per worker	CY07 Avg Investigations Completed per Mo per worker
De Baca/Harding/Quay	2.0	193	170	186	9.4%	3	93.0	7.8
State Total	25.0	2,684	3,040	2,709	-10.9%	73	108.4	9.0
Region Total	132.5	15,424	16,116	16,005	-0.7%	1,065	120.8	10.1

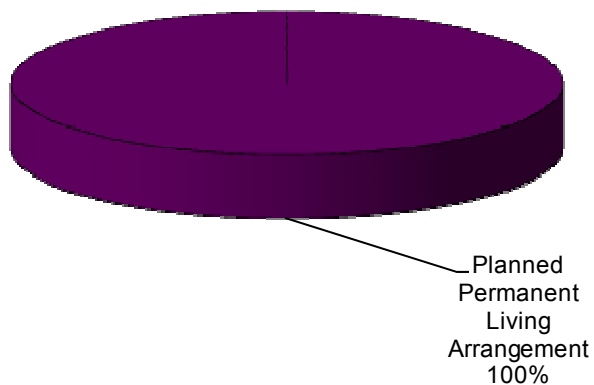
Source: SM01a02

DE BACA COUNTY (REGION 4/TOM CASSIDY COUNTY MANGER)

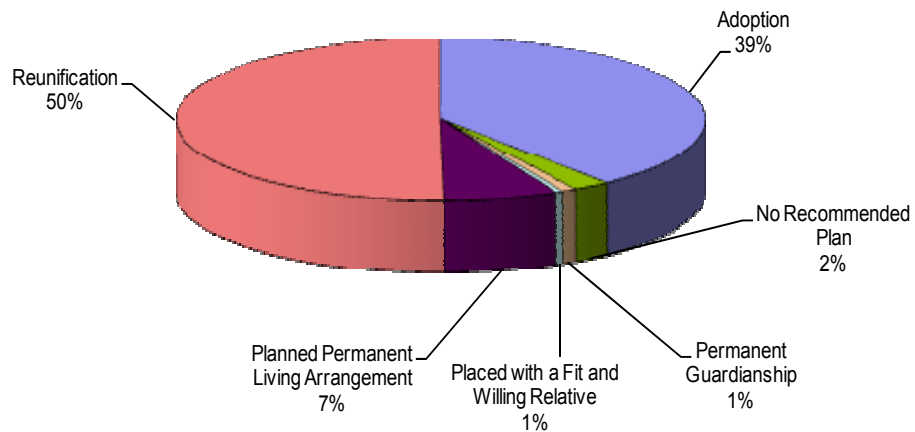
POINT IN TIME MEASURES: DECEMBER 31, 2007

County De Baca	Number	Region Total	State Total	% of State Total
NUMBER OF CHILDREN IN CARE (SM0907)	0	590	2,455	0.00%
• AVERAGE LENGTH OF STAY IN FOSTER CARE (IN MONTHS - END QTR) (SM0907)	0.0		21.3	
NUMBER OF FOSTER CARE PROVIDERS (PM02a01)	2	195	975	0.21%
NUMBER OF ADOPTION PROVIDERS (PM02a01)	2	180	1,427	0.14%
NUMBER OF CHILDREN WITH A PLAN OF ADOPTION (PM02a01)	0	159	935	0.00%
• NUMBER CHILDREN FREED AND WAITING (SM0907)	0	121	553	0.00%
• NUMBER OF CHILDREN FREED AND WAITING (WITH RESOURCES) (SM0803)	0	45	175	0.00%
• NUMBER OF CHILDREN FREED AND WAITING (WITHOUT RESOURCES) (SM0803)	0	76	378	0.00%
PERMANENT PLAN LIVING ARRANGEMENT (SM0904)	4	50	165	2.42%
WORKER VISITS WITH CHILDREN IN CARE (SM08-06)	Coming Soon			

Permanency Plan Goals of Children in Custody
De Baca County N = 4
Point In Time December 31, 2007
 Source: SM0904



Permanency Plan Goals of Children in Custody
New Mexico N = 2381
Point In Time December 31, 2007
 Source: SM0904



DE BACA COUNTY (REGION 4/TOM CASSIDY COUNTY MANGER)

RECURRENCE OF SUBSTANTIATED MALTREATMENT WITHIN 6 MONTHS

OF A PREVIOUSLY SUBSTANTIATED REPORT OF MALTREATMENT

County De Baca	Total # of Maltreatment Victims	# With Recurrence	% With Recurrence
2nd Qtr SFY 08	1	0	0.0%
Region Total	291	17	5.8%
State Total	1,030	78	7.6%

Round 1 Federal National Standard = No more than 6.1%
New Mexico SFY 08 Standard = No more than 7.0%

Source: SM0907

CHILDREN REENTERING CARE WITHIN TWELVE MONTHS OF A PRIOR EPISODE

County De Baca	Total Entering Care #	# Reentering Within 12 Months	% Reentering Within 12 Months
2nd Qtr SFY 08	0	0	0.0%
Region Total	110	17	15.5%
State Total	535	76	14.2%

Round 1 Federal National Standard = No More than 8.6%
New Mexico SFY 08 Standard = No Standard

Source: SM0907

Note: SFY = State Fiscal Year. In New Mexico the State Fiscal year is July 1 through June 30 of the following year.

CHILDREN MALTREATED IN FOSTER CARE (PERFORMANCE OVER A ROLLING 12 MONTHS)

County De Baca	Total # of Children in Care	# Maltreated	% of Maltreated in Foster Care
2nd Qtr SFY 08	4	0	0.00%
Region Total	1,024	5	0.49%
State Total	4,700	24	0.51%

Round 1 Federal National Standard = No more than 0.57%
New Mexico SFY08 State Standard = No more than 0.57%

Source: SM0907

CHILDREN REUNIFIED IN LESS THAN TWELVE MONTHS OF ENTRY INTO CARE

County De Baca	Total # Reunified	# Reunified less than 12 mos	% Reunified less than 12 mos
2nd Qtr SFY 08	0	0	0.0%
Region Total	50	44	88.0%
State Total	290	236	81.4%

Round 1 Federal National Standard = At or above 76.2%
New Mexico SFY 08 State Standard = At or above 85.0%

Source: SM0907

CHILDREN IN FOSTER CARE FOR UP TO 12 MONTHS WITH NO MORE THAN TWO PLACEMENT SETTING

County De Baca	Total	# With Two or Fewer	% With Two or Fewer
2nd Qtr SFY 08	0	0	0.00%
Region Total	342	259	75.73%
State Total	1,448	1,163	80.32%

Round 1 Federal National Standard = At or Above 86.7%
New Mexico SFY 08 Standard = At or Above 86.7%

Source: SM0907

CHILDREN WITH A FINALIZED ADOPTION WITHIN 24 MONTHS OF ENTRY INTO CARE

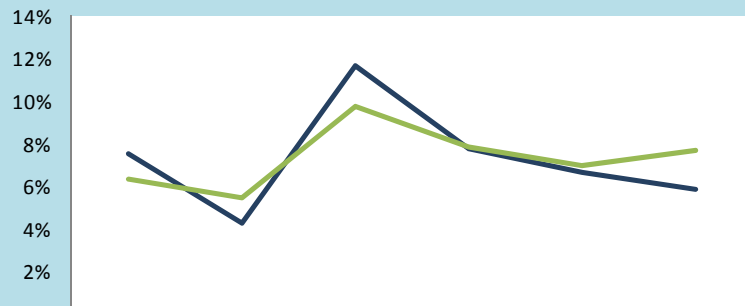
County De Baca	Total # Adopted	# <24 mos.	% <24 mos.
2nd Qtr SFY 08	0	0	0.0%
Region Total	35	6	17.1%
State Total	101	26	25.7%

Round 1 Federal National Standard = at least 32.0%
New Mexico SFY 08 Standard = At least 34.0%

Source: SM0907

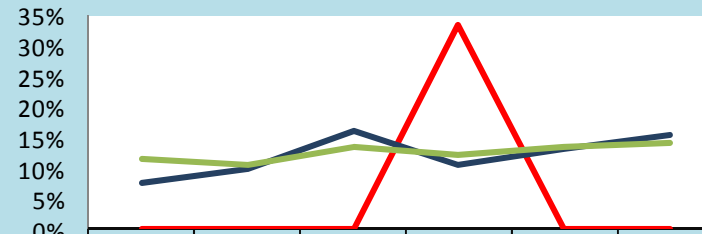
DE BACA COUNTY (REGION 4/TOM CASSIDY COUNTY MANGER)

Trends of Recurrence of Substantiated Maltreatment Within 6 Months of a Previously Substantiated Report of Maltreatment
ACF National Standard = 6.1%



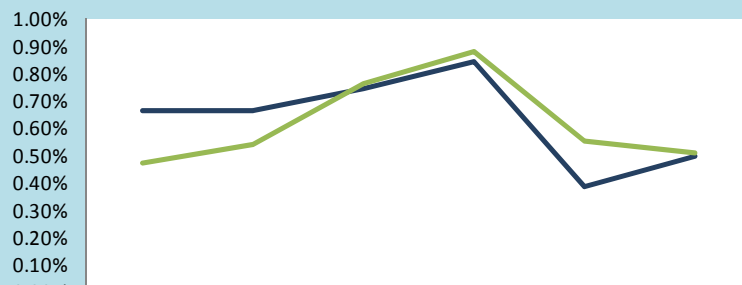
	Q1 SFY07	Q2 SFY07	Q3 SFY07	Q4 SFY07	Q1 SFY08	Q2 SFY08
De Baca	0.0%	0.0%	0.0%	0.0%	0.0%	0.0%
Region Total	7.5%	4.2%	11.6%	7.7%	6.6%	5.8%
State Total	6.3%	5.4%	9.7%	7.8%	6.9%	7.6%

Trends of Children Reentering Care within Twelve Months of A Prior Episode
ACF National Standard = 8.6%



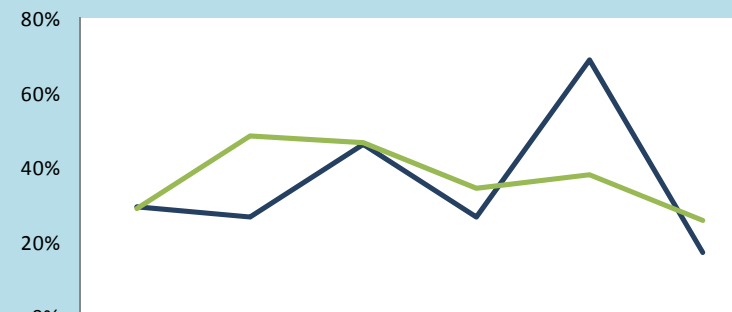
	Q1 SFY07	Q2 SFY07	Q3 SFY07	Q4 SFY07	Q1 SFY08	Q2 SFY08
De Baca	0.0%	0.0%	0.0%	33.3%	0.0%	0.0%
Region Total	7.8%	10.1%	16.3%	10.9%	13.4%	15.5%
State Total	11.6%	10.6%	13.4%	12.1%	13.6%	14.2%

Trends of Children Maltreated in Foster Care (performance over Rolling 12 Months)
ACF National Standard = 0.57%



	Yr Ending 09/30/06	Yr Ending 12/31/06	Yr Ending 04/31/07	Yr Ending 06/30/07	Yr Ending 09/30/07	Yr Ending 12/31/07
De Baca	0.00%	0.00%	0.00%	0.00%	0.00%	0.00%
Region Total	0.66%	0.66%	0.74%	0.84%	0.38%	0.49%
State Total	0.47%	0.54%	0.76%	0.88%	0.55%	0.51%

Trends of Children With a Finalized Adoption Within 24 Months of Entry Into Care
ACF National Standard = 32.0%



	Q1 SFY07	Q2 SFY07	Q3 SFY07	Q4 SFY07	Q1 SFY08	Q2 SFY08
De Baca	0.0%	0.0%	0.0%	0.0%	0.0%	0.0%
Region Total	29.4%	26.7%	46.2%	26.7%	68.8%	17.1%
State Total	28.8%	48.2%	46.3%	34.4%	38.0%	25.7%

Note: The reader should note that in the instance of existing children maltreated in Foster Care, cases are carried forward in the calculation for 12 rolling months. Thus trend data will display the existing cases for 12 consecutive months. For this reason elevated levels across multiple quarter may not indicate new cases for this measure.

EDDY COUNTY (REGION 4/VICKY COBB COUNTY MANGER)

According to the US Census in 2005, Eddy County attained an overall population of 51,658 or 2.78% of the state's total population. There were 14,901 children in the county in 2005; this represents 2.91% of the state's total children under 18. While the whole county accounts for **2.91%** of the state's total children under 18, Eddy County had **4.11%** of the state's total children in care as of December 31, 2007.

	Race and Ethnicity			
	Eddy ¹		Total Population ²	
	Children Under 19 yrs	Children Under 19 yrs of Hispanic Origin	Eddy	New Mexico
Total Population	14,781	7,573	51,658	1,854,938
White	94.1%	95.4%	76.3%	66.8%
Black	2.3%	1.9%	1.6%	1.9%
American Indian or Alaskan Native	1.4%	1.0%	1.3%	9.5%
Asian	0.2%	0.4%	0.4%	1.1%
Native Hawaiian or Other Pacific Islander	0.2%	0.4%	0.1%	0.1%
Some other Race	1.5%	1.0%	17.7%	17.0%
Hispanic or Latino			38.8%	42.1%
Under 18 yrs			14,907	511,768
% of Families Living under the poverty Level			13.6%	14.5%

1. Source: U.S. Census Bureau, Population Division\Bureau of Business and Economic Research, Univ. of New Mexico.
 2. Source: U.S. Census Bureau\State and County QuickFACTS

Children In Care End 12/31/07 Eddy County		
HISPANIC	No	Yes
Percentage	55.4%	44.6%
RACE		Total
Black or African American	6	0.24%
Unable to Determine	2	0.08%
White	93	3.79%

Source: SM0907



Age of Children in Care End 12/31/07													
County	< 1 yr		1 - 5 yrs		6 - 10 yrs		11 - 15 yrs		16 - 17 yrs		18+ yrs		Total
	%	#	%	#	%	#	%	#	%	#	%	#	
Eddy	6%	6	40%	40	20%	20	19%	19	10%	10	5%	5	101
Region Total	5%	32	36%	213	22%	131	20%	118	12%	69	5%	27	590
State Total	2%	49	34%	835	33%	810	21%	516	6%	147	4%	98	2,455

Source: SM0907

EDDY COUNTY (REGION 4/VICKY COBB COUNTY MANGER)

PROTECTIVE SERVICES REPORTS AND INVESTIGATIONS - QUARTER 2 SFY 08: OCTOBER - DECEMBER 2007

County	Accepted Reports	Investigations						County % of State Total Investigations ¹	Number of Children Victims	Victim Rate ² per 1,000 children
		Substantiated		Unsubstantiated		Total Investigations				
Eddy	122	24	18.5%	106	81.5%	130	3.0%	35	9.4	
Region Total	608	207	32.1%	438	67.9%	645	14.6%	336	18.8	
State Total	3,748	1,041	23.6%	3,362	76.4%	4,403	100.0%	1,589	12.4	

Note: Not all "accepted reports" result in investigations completed during the period under review.

- Both County and Regional data are calculated as a % of the State's total investigations for the period under review.
- For the quarterly *360 Degrees* County Profiles Report this information is calculated by annualizing the quarterly data. For the SFY Annual *360 Degrees* County Profiles Report this information is calculated, based on four quarters of reported data.

Source: SM01a02 and SM06a01

HOW ARE WE DOING?
By comparing "total investigations" for the quarter with "accepted reports" for the quarter, you can get a **sense** of work flow. To get a further sense of work flow, also review the cases with a "pending over 30 days" status and the case weight information for each county.

CPS ALLEGATION TYPES OF CHILD MALTREATMENT - QUARTER 2 SFY 08: OCTOBER - DECEMBER 2007

Valencia	Physical Abuse				Sexual Abuse				Physical Neglect				Totals							
	Total	Substantiated	Unsubstantiated		Total	Substantiated	Unsubstantiated		Total	Substantiated	Unsubstantiated		Total	Substantiated	Unsubstantiated					
Eddy	100	12	12.0%	88	88.0%	6	2	33.3%	4	66.7%	203	40	19.7%	163	80.3%	309	54	17.5%	255	82.5%
Region Total	455	119	26.2%	336	73.8%	37	6	16.2%	31	83.8%	1,391	411	29.5%	980	70.5%	1,883	536	28.5%	1,347	71.5%
State Total	3,347	614	18.3%	2,733	81.7%	385	53	13.8%	332	86.2%	8,225	1,900	23.1%	6,325	76.9%	11,957	2,567	21.5%	9,390	78.5%

Note: In every investigation there may be multiple allegations of maltreatment for one or more children. In counties with small populations, very small numbers in any category may render suspect any data collected during the period under review.

Source: SM06a01



PENDING INVESTIGATIONS: DECEMBER 2007

County	Reports Without An Investigation After 30 days		Pending Over 30 Days						Pending Less Than 30 Days		
	11/07	12/07	Baseline 11/04 Total	11/07 Total	12/07 Total	Priority Levels 12/07			Baseline 11/04 Total	11/07 Total	12/07 Total
						E	P1	P2			
Eddy	0	0	34	7	3	0	2	1	50	35	30
Region Total	2	0	426	94	73	5	15	53	228	171	167
State Total	3	2	4917	1614	1165	98	239	828	1296	1141	900

Source : SM06a01

EDDY COUNTY (REGION 4/VICKY COBB COUNTY MANGER)



CHILDREN IN AN OUT OF HOME PLACEMENT FOR MORE THAN TEN DAYS WITH AN INITIAL EPSDT¹ EXAMINATION 2ND QUARTER SFY 08

County	Children With Initial EPSDT Exam During Reporting Period		Children Without Initial EPSDT Exam During Reporting Period		Total Children in Out of Home Placement Greater Than 10 Days ²	Children with Initial EPSDT Within 30 Days	
	#	%	#	%	#	#	%
Eddy	3	25.0%	9	75.0%	12	3	25.0%
Region Total	35	49.3%	36	50.7%	71	32	45.1%
State Total	144	49.8%	145	50.2%	289	127	43.9%

1. EPSDT = Early and Periodic Screening, Diagnosis and Treatment Medicaid Medical Visits.
2. Report counts all children entering care during the parameter period and remaining in care more than 10 days.

Source: SM10a36

ADOPTION AND ADOLESCENT RESOURCE TEAM –2ND QUARTER SFY 08

	ADOPTION MEASURES NOT ACHIEVED	Total Cases	Not Achieved as % of Total Cases
Eddy	0	69	0.0%
Region Total	3	493	0.6%
State Total	67	2,845	2.4%

ADOPTION AND ADOLESCENT RESOURCE TEAM –2ND QUARTER SFY 08

	INDEPENDENT LIVING MEASURES NOT ACHIEVED	Total Cases	Not Achieved as % of Total Cases
Eddy	0	32	0.0%
Region Total	6	290	2.1%
State Total	27	1,125	2.4%

Source: JTS Database

Permanency Worker Case Weights SM0904 December 2007 Monthly Report

County	Number of Children in Custody as of 12/31/07	Number of Permanency Worker Positions as of 12/31/07	Number of Children per Permanency Worker as of 12/07
Eddy	111	5	22.2
State Total	593	29	20.4
Region Total	2,508	147.5	17.0

Source: December Monthly 2007 SM0904
FTE Position Responsible for Permanency Planning
Includes 110 Children w/No Plan

Investigation Worker Case Weight Report CY 2007

	# of PS Investigation Worker Positions	Total # PS Accepted Reports 2007	Total # PS Completed Investigations 2006	Total # PS Completed Investigations 2007	% of Increase/Decrease in Investigations from CY06	Pending Investigation over 30 days 12/07	CY07 Avg Investigations Completed per Yr per worker	CY07 Avg Investigations Completed per Mo per worker
Eddy	5.0	548	642	563	-12.3%	3	112.6	9.4
State Total	25.0	2,684	3,040	2,709	-10.9%	73	108.4	9.0
Region Total	132.5	15,424	16,116	16,005	-0.7%	1,065	120.8	10.1

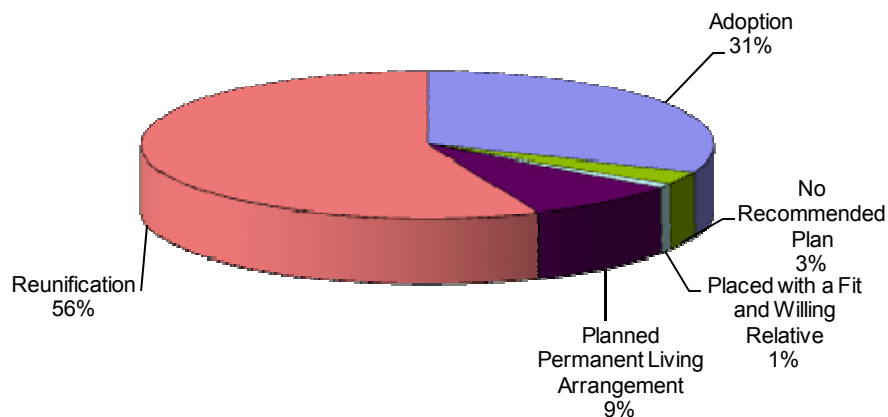
Source: SM01a02

EDDY COUNTY (REGION 4/VICKY COBB COUNTY MANGER)

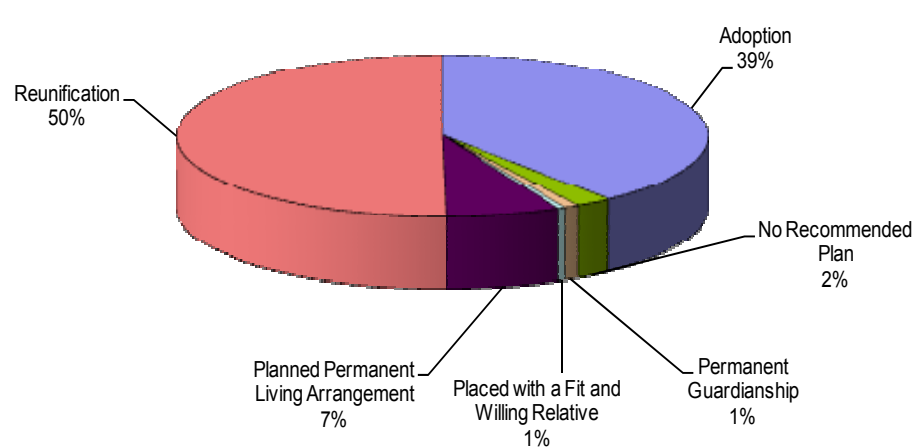
POINT IN TIME MEASURES: DECEMBER 31, 2007

County Eddy	Number	Region Total	State Total	% of State Total
NUMBER OF CHILDREN IN CARE (SM0907)	101	590	2,455	4.11%
• AVERAGE LENGTH OF STAY IN FOSTER CARE (IN MONTHS - END QTR) (SM0907)			21.3	
NUMBER OF FOSTER CARE PROVIDERS (PM02a01)	44	195	975	4.51%
NUMBER OF ADOPTION PROVIDERS (PM02a01)	41	180	1,427	2.87%
NUMBER OF CHILDREN WITH A PLAN OF ADOPTION (PM02a01)	32	159	935	3.42%
• NUMBER CHILDREN FREED AND WAITING (SM0907)	29	121	553	5.24%
• NUMBER OF CHILDREN FREED AND WAITING (WITH RESOURCES) (SM0803)	18	45	175	10.29%
• NUMBER OF CHILDREN FREED AND WAITING (WITHOUT RESOURCES) (SM0803)	11	76	378	2.91%
PERMANENT PLAN LIVING ARRANGEMENT (SM0904)	9	50	165	5.45%
WORKER VISITS WITH CHILDREN IN CARE (SM08-06)	Coming Soon			

**Permanency Plan Goals of Children in Custody
Eddy County N = 103
Point In Time December 31, 2007**
Source: SM0904



**Permanency Plan Goals of Children in Custody
New Mexico N = 2381
Point In Time December 31, 2007**
Source: SM0904



EDDY COUNTY (REGION 4/VICKY COBB COUNTY MANGER)

RECURRENCE OF SUBSTANTIATED MALTREATMENT WITHIN 6 MONTHS OF A PREVIOUSLY SUBSTANTIATED REPORT OF MALTREATMENT

County Eddy	Total # of Maltreatment Victims	# With Recurrence	% With Recurrence
2nd Qtr SFY 08	36	1	2.8%
Region Total	291	17	5.8%
State Total	1,030	78	7.6%

Round 1 Federal National Standard = No more than 6.1%
New Mexico SFY 08 Standard = No more than 7.0%

Source: SM0907

CHILDREN REENTERING CARE WITHIN TWELVE MONTHS OF A PRIOR EPISODE

County Eddy	Total Entering Care #	# Reentering Within 12 Months	% Reentering Within 12 Months
2nd Qtr SFY 08	13	3	23.1%
Region Total	110	17	15.5%
State Total	535	76	14.2%

Round 1 Federal National Standard = No More than 8.6%
New Mexico SFY 08 Standard = No Standard

Source: SM0907

Note: SFY = State Fiscal Year. In New Mexico the State Fiscal year is July 1 through June 30 of the following year.

CHILDREN MALTREATED IN FOSTER CARE (PERFORMANCE OVER A ROLLING 12 MONTHS)

County Eddy	Total # of Children in Care	# Maltreated	% of Maltreated in Foster Care
2nd Qtr SFY 08	175	1	0.57%
Region Total	1,024	5	0.49%
State Total	4,700	24	0.51%

Round 1 Federal National Standard = No more than 0.57%
New Mexico SFY08 State Standard = No more than 0.57%

Source: SM0907

CHILDREN REUNIFIED IN LESS THAN TWELVE MONTHS OF ENTRY INTO CARE

County Eddy	Total # Reunified	# Reunified less than 12 mos	% Reunified less than 12 mos
2nd Qtr SFY 08	7	5	71.4%
Region Total	50	44	88.0%
State Total	290	236	81.4%

Round 1 Federal National Standard = At or above 76.2%
New Mexico SFY 08 State Standard = At or above 85.0%

Source: SM0907

CHILDREN IN FOSTER CARE FOR UP TO 12 MONTHS WITH NO MORE THAN TWO PLACEMENT SETTING

County Eddy	Total	# With Two or Fewer	% With Two or Fewer
2nd Qtr SFY 08	62	44	70.97%
Region Total	342	259	75.73%
State Total	1,448	1,163	80.32%

Round 1 Federal National Standard = At or Above 86.7%
New Mexico SFY 08 Standard = At or Above 86.7%

Source: SM0907

CHILDREN WITH A FINALIZED ADOPTION WITHIN 24 MONTHS OF ENTRY INTO CARE

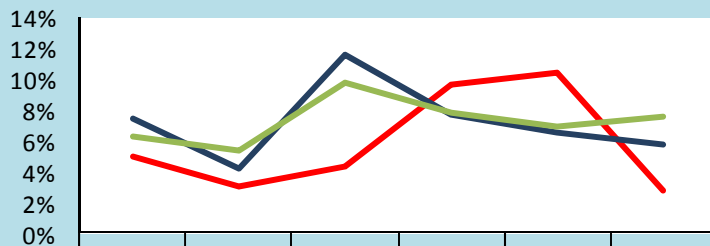
County Eddy	Total # Adopted	# <24 mos.	% <24 mos.
2nd Qtr SFY 08	5	0	0.0%
Region Total	35	6	17.1%
State Total	101	26	25.7%

Round 1 Federal National Standard = at least 32.0%
New Mexico SFY 08 Standard = At least 34.0%

Source: SM0907

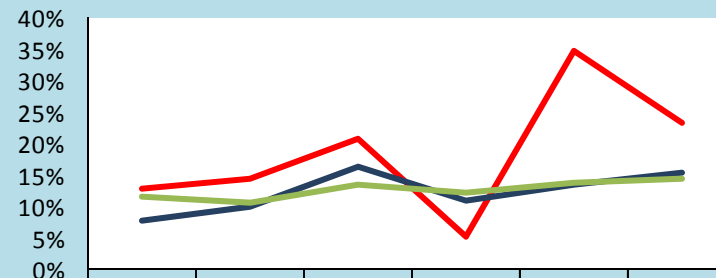
EDDY COUNTY (REGION 4/VICKY COBB COUNTY MANGER)

Trends of Recurrence of Substantiated Maltreatment Within 6 Months of a Previously Substantiated Report of Maltreatment
ACF National Standard = 6.1%



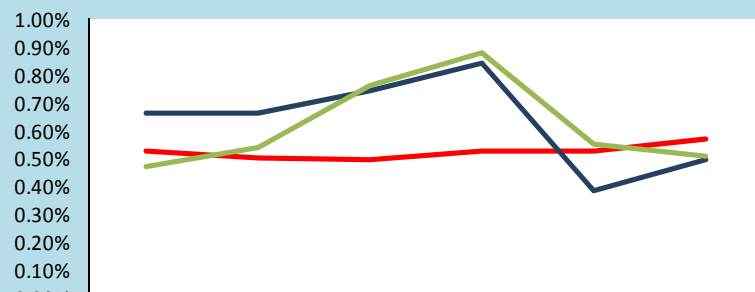
	Q1 SFY07	Q2 SFY07	Q3 SFY07	Q4 SFY07	Q1 SFY08	Q2 SFY08
Eddy	5.0%	3.0%	4.3%	9.6%	10.4%	2.8%
Region Total	7.5%	4.2%	11.6%	7.7%	6.6%	5.8%
State Total	6.3%	5.4%	9.7%	7.8%	6.9%	7.6%

Trends of Children Reentering Care within Twelve Months of A Prior Episode
ACF National Standard = 8.6%



	Q1 SFY07	Q2 SFY07	Q3 SFY07	Q4 SFY07	Q1 SFY08	Q2 SFY08
Eddy	12.5%	14.2%	20.5%	5.0%	34.6%	23.1%
Region Total	7.8%	10.1%	16.3%	10.9%	13.4%	15.5%
State Total	11.6%	10.6%	13.4%	12.1%	13.6%	14.2%

Trends of Children Maltreated in Foster Care (performance over Rolling 12 Months)
ACF National Standard = 0.57%



	Yr Ending 09/30/06	Yr Ending 12/31/06	Yr Ending 04/31/07	Yr Ending 06/30/07	Yr Ending 09/30/07	Yr Ending 12/31/07
Eddy	0.52%	0.50%	0.49%	0.52%	0.52%	0.57%
Region Total	0.66%	0.66%	0.74%	0.84%	0.38%	0.49%
State Total	0.47%	0.54%	0.76%	0.88%	0.55%	0.51%

Trends of Children With a Finalized Adoption Within 24 Months of Entry Into Care
ACF National Standard = 32.0%



	Q1 SFY07	Q2 SFY07	Q3 SFY07	Q4 SFY07	Q1 SFY08	Q2 SFY08
Eddy	100.0%	100.0%	14.3%	0.0%	50.0%	0.0%
Region Total	29.4%	26.7%	46.2%	26.7%	68.8%	17.1%
State Total	28.8%	48.2%	46.3%	34.4%	38.0%	25.7%

Note: The reader should note that in the instance of existing children maltreated in Foster Care, cases are carried forward in the calculation for 12 rolling months. Thus trend data will display the existing cases for 12 consecutive months. For this reason elevated levels across multiple quarter may not indicate new cases for this measure.

HARDING COUNTY (REGION 4/TOM CASSIDY COUNTY MANAGER)

According to the US Census in 2005, De Baca County attained an overall population of 2,240 or 0.12% of the state's total population. There were 540 children in the county in 2005; this represents 0.11% of the state's total children under 18. While the whole county accounts for **0.11%** of the state's total children under 18, De Baca County had **0.0%** of the state's total children in care as of December 31, 2007.

	Race and Ethnicity			
	Harding ¹		Total Population ²	
	Children Under 19 yrs	Children Under 19 yrs of Hispanic Origin	Harding	New Mexico
Total Population	125	51	810	1,854,938
White	94.4%	92.2%	84.3%	66.8%
Black	1.6%	0.0%	0.4%	1.9%
American Indian or Alaskan Native	4.0%	7.8%	1.4%	9.5%
Asian	0.0%	0.0%	0.0%	1.1%
Native Hawaiian or Other Pacific Islander	0.0%	0.0%	0.0%	0.1%
Some other Race	0.0%	0.0%	10.6%	17.0%
Hispanic or Latino			44.9%	42.1%
Under 18 yrs			164	511,768
% of Families Living under the poverty Level			12.9%	14.5%

1. Source: U.S. Census Bureau, Population Division\Bureau of Business and Economic Research, Univ. of New Mexico.
 2. Source: U.S. Census Bureau\State and County QuickFACTS

Children In Care End 12/31/07 Harding County		
HISPANIC	No	Yes
Percentage	0.0%	0.0%
RACE	Total	%
	0	0.00%

Source: SM0907



Age of Children in Care End 12/31/07													
County	< 1 yr		1 - 5 yrs		6 - 10 yrs		11 - 15 yrs		16 - 17 yrs		18+ yrs		Total
	%	#	%	#	%	#	%	#	%	#	%	#	
Harding	0%	0	0%	0	0%	0	0%	0	0%	0	0%	0	0
Region Total	5%	32	36%	213	22%	131	20%	118	12%	69	5%	27	590
State Total	2%	49	34%	835	33%	810	21%	516	6%	147	4%	98	2,455

Source: SM0907

HARDING COUNTY (REGION 4/TOM CASSIDY COUNTY MANAGER)

PROTECTIVE SERVICES REPORTS AND INVESTIGATIONS - QUARTER 2 SFY 08: OCTOBER - DECEMBER 2007

County	Accepted Reports	Investigations							
		Substantiated		Unsubstantiated		Total Investigations	County % of State Total Investigations ¹	Number of Children Victims	Victim Rate ² per 1,000 children
Harding	0	2	100.0%	0	0.0%	2	0.0%	3	73.2
Region Total	608	207	32.1%	438	67.9%	645	14.6%	336	18.8
State Total	3,748	1,041	23.6%	3,362	76.4%	4,403	100.0%	1,589	12.4

Note: Not all "accepted reports" result in investigations completed during the period under review.

- Both County and Regional data are calculated as a % of the State's total investigations for the period under review.
- For the quarterly *360 Degrees* County Profiles Report this information is calculated by annualizing the quarterly data. For the SFY Annual *360 Degrees* County Profiles Report this information is calculated, based on four quarters of reported data.

Source: SM01a02 and SM06a01

HOW ARE WE DOING?
By comparing "total investigations" for the quarter with "accepted reports" for the quarter, you can get a **sense** of work flow. To get a further sense of work flow, also review the cases with a "pending over 30 days" status and the case weight information for each county.

CPS ALLEGATION TYPES OF CHILD MALTREATMENT - QUARTER 2 SFY 08: OCTOBER - DECEMBER 2007

County	Physical Abuse				Sexual Abuse				Physical Neglect				Totals							
	Total	Substantiated	Unsubstantiated		Total	Substantiated	Unsubstantiated		Total	Substantiated	Unsubstantiated		Total	Substantiated	Unsubstantiated					
Harding	0	0	0.0%	0	0.0%	0	0	0.0%	0	0.0%	4	4	100.0%	0	0.0%	4	4	100.0%	0	0.0%
Region Total	455	119	26.2%	336	73.8%	37	6	16.2%	31	83.8%	1,391	411	29.5%	980	70.5%	1,883	536	28.5%	1,347	71.5%
State Total	3,347	614	18.3%	2,733	81.7%	385	53	13.8%	332	86.2%	8,225	1,900	23.1%	6,325	76.9%	11,957	2,567	21.5%	9,390	78.5%

Note: In every investigation there may be multiple allegations of maltreatment for one or more children. In counties with small populations, very small numbers in any category may render suspect any data collected during the period under review.

Source: SM06a01



PENDING INVESTIGATIONS: DECEMBER 2007

County	Reports Without An Investigation After 30 days		Pending Over 30 Days						Pending Less Than 30 Days		
	11/07	12/07	Baseline 11/04 Total	11/07 Total	12/07 Total	Priority Levels 12/07			Baseline 11/04 Total	11/07 Total	12/07 Total
						E	P1	P2			
Harding	0	0	1	0	0	0	0	0	0	0	0
Region Total	2	0	426	94	73	5	15	53	228	171	167
State Total	3	2	4917	1614	1165	98	239	828	1296	1141	900

Source : SM06a01

HARDING COUNTY (REGION 4/TOM CASSIDY COUNTY MANAGER)

CHILDREN IN AN OUT OF HOME PLACEMENT FOR MORE THAN TEN DAYS WITH AN INITIAL EPSDT¹ EXAMINATION 2ND QUARTER SFY 08



County	Children With Initial EPSDT Exam During Reporting Period		Children Without Initial EPSDT Exam During Reporting Period		Total Children in Out of Home Placement Greater Than 10 Days ²	Children with Initial EPSDT Within 30 Days	
	#	%	#	%	#	#	%
Harding	0	0.0%	0	0.0%	0	0	0.0%
Region Total	35	49.3%	36	50.7%	71	32	45.1%
State Total	144	49.8%	145	50.2%	289	127	43.9%

1. EPSDT = Early and Periodic Screening, Diagnosis and Treatment Medicaid Medical Visits.
2. Report counts all children entering care during the parameter period and remaining in care more than 10 days.

Source: SM10a36

ADOPTION AND ADOLESCENT RESOURCE TEAM –2ND QUARTER SFY 08

	ADOPTION MEASURES NOT ACHIEVED	Total Cases	Not Achieved as % of Total Cases
Harding	0	0	0.0%
Region Total	3	493	0.6%
State Total	67	2,845	2.4%

ADOPTION AND ADOLESCENT RESOURCE TEAM –2ND QUARTER SFY 08

	INDEPENDENT LIVING MEASURES NOT ACHIEVED	Total Cases	Not Achieved as % of Total Cases
Harding	0	5	0.0%
Region Total	6	290	2.1%
State Total	27	1,125	2.4%

Source: JTS Database

Permanency Worker Case Weights SM0904 December 2007 Monthly Report

County	Number of Children in Custody as of 12/31/07	Number of Permanency Worker Positions as of 12/31/07	Number of Children per Permanency Worker as of 12/07
Harding/De Baca/Quay	50	1	50.0
State Total	593	29	20.4
Region Total	2,508	147.5	17.0

Source: December Monthly 2007 SM0904
FTE Position Responsible for Permanency Planning
Includes 110 Children w/No Plan

Investigation Worker Case Weight Report CY 2007

County	# of PS Investigation Worker Positions	Total # PS Accepted Reports 2007	Total # PS Completed Investigations 2006	Total # PS Completed Investigations 2007	% of Increase/Decrease in Investigations from CY06	Pending Investigation over 30 days 12/07	CY07 Avg Investigations Completed per Yr per worker	CY07 Avg Investigations Completed per Mo per worker
Harding/De Baca/Quay	2.0	193	170	186	9.4%	3	93.0	7.8
State Total	25.0	2,684	3,040	2,709	-10.9%	73	108.4	9.0
Region Total	132.5	15,424	16,116	16,005	-0.7%	1,065	120.8	10.1

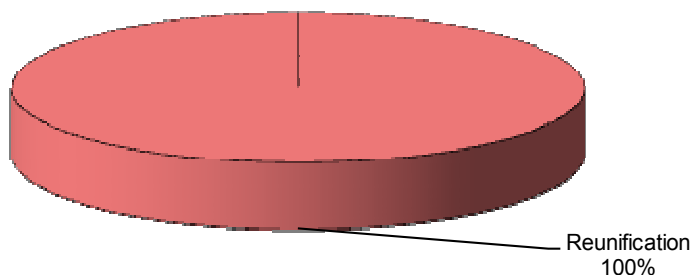
Source: SM01a02

HARDING COUNTY (REGION 4/TOM CASSIDY COUNTY MANAGER)

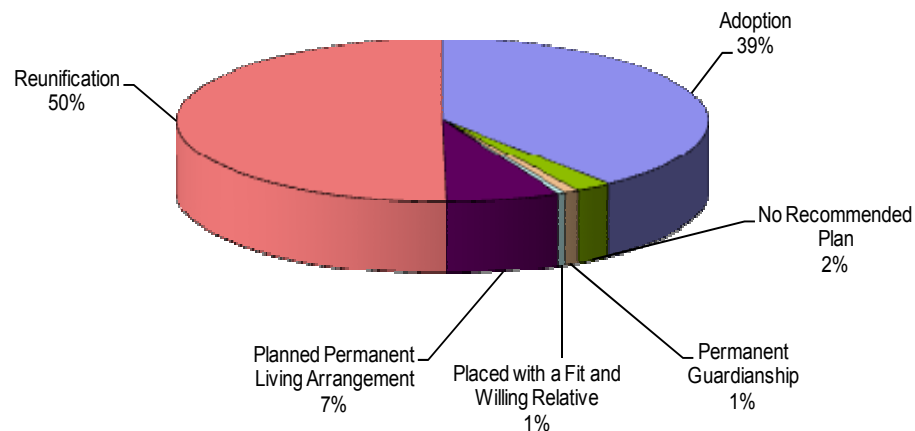
POINT IN TIME MEASURES: DECEMBER 31, 2007

County Harding	Number	Region Total	State Total	% of State Total
NUMBER OF CHILDREN IN CARE (SM0907)	0	503	2,455	0.00%
• AVERAGE LENGTH OF STAY IN FOSTER CARE (IN MONTHS - END QTR) (SM0907)	0.0		21.3	
NUMBER OF FOSTER CARE PROVIDERS (PM02a01)	0	158	975	0.00%
NUMBER OF ADOPTION PROVIDERS (PM02a01)	0	147	1,427	0.00%
NUMBER OF CHILDREN WITH A PLAN OF ADOPTION (PM02a01)	0	221	935	0.00%
• NUMBER CHILDREN FREED AND WAITING (SM0907)	0	132	553	0.00%
• NUMBER OF CHILDREN FREED AND WAITING (WITH RESOURCES) (SM0803)	0	37	175	0.00%
• NUMBER OF CHILDREN FREED AND WAITING (WITHOUT RESOURCES) (SM0803)	0	95	378	0.00%
PERMANENT PLAN LIVING ARRANGEMENT (SM0904)	0	32	165	0.00%
WORKER VISITS WITH CHILDREN IN CARE (SM08-06)	Coming Soon			

**Permanency Plan Goals of Children in Custody
Harding County N = 1
Point In Time December 31, 2007**
Source: SM0904



**Permanency Plan Goals of Children in Custody
New Mexico N = 2381
Point In Time December 31, 2007**
Source: SM0904



HARDING COUNTY (REGION 4/TOM CASSIDY COUNTY MANAGER)

RECURRENCE OF SUBSTANTIATED MALTREATMENT WITHIN 6 MONTHS

OF A PREVIOUSLY SUBSTANTIATED REPORT OF MALTREATMENT

County Harding	Total # of Maltreatment Victims	# With Recurrence	% With Recurrence
2nd Qtr SFY 08	0	0	0.0%
Region Total	291	17	5.8%
State Total	1,030	78	7.6%

Round 1 Federal National Standard = No more than 6.1%
New Mexico SFY 08 Standard = No more than 7.0%

Source: SM0907

CHILDREN REENTERING CARE WITHIN TWELVE MONTHS OF A PRIOR EPISODE

County Harding	Total Entering Care #	# Reentering Within 12 Months	% Reentering Within 12 Months
2nd Qtr SFY 08	0	0	0.0%
Region Total	110	17	15.5%
State Total	535	76	14.2%

Round 1 Federal National Standard = No More than 8.6%
New Mexico SFY 08 Standard = No Standard

Source: SM0907

Note: SFY = State Fiscal Year. In New Mexico the State Fiscal year is July 1 through June 30 of the following year.

CHILDREN MALTREATED IN FOSTER CARE (PERFORMANCE OVER A ROLLING 12 MONTHS)

County Harding	Total # of Children in Care	# Maltreated	% of Maltreated in Foster Care
2nd Qtr SFY 08	0	0	0.00%
Region Total	1,024	5	0.49%
State Total	4,700	24	0.51%

Round 1 Federal National Standard = No more than 0.57%
New Mexico SFY08 State Standard = No more than 0.57%

Source: SM0907

CHILDREN REUNIFIED IN LESS THAN TWELVE MONTHS OF ENTRY INTO CARE

County Harding	Total # Reunified	# Reunified less than 12 mos	% Reunified less than 12 mos
2nd Qtr SFY 08	0	0	0.0%
Region Total	50	44	88.0%
State Total	290	236	81.4%

Round 1 Federal National Standard = At or above 76.2%
New Mexico SFY 08 State Standard = At or above 85.0%

Source: SM0907

CHILDREN IN FOSTER CARE FOR UP TO 12 MONTHS WITH NO MORE THAN TWO PLACEMENT SETTING

County Harding	Total	# With Two or Fewer	% With Two or Fewer
2nd Qtr SFY 08	0	0	0.00%
Region Total	342	259	75.73%
State Total	1,448	1,163	80.32%

Round 1 Federal National Standard = At or Above 86.7%
New Mexico SFY 08 Standard = At or Above 86.7%

Source: SM0907

CHILDREN WITH A FINALIZED ADOPTION WITHIN 24 MONTHS OF ENTRY INTO CARE

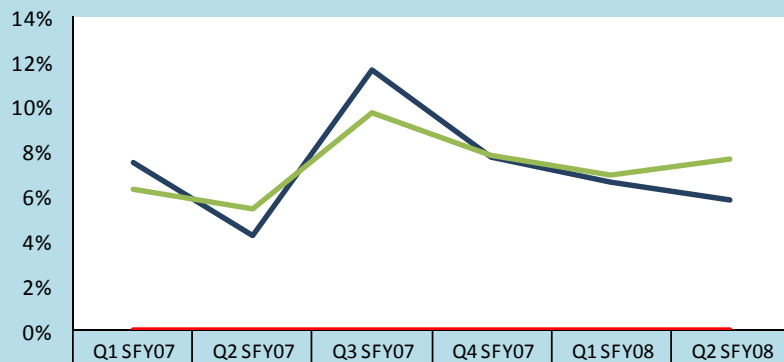
County Harding	Total # Adopted	# <24 mos.	% <24 mos.
2nd Qtr SFY 08	0	0	0.0%
Region Total	35	6	17.1%
State Total	101	26	25.7%

Round 1 Federal National Standard = at least 32.0%
New Mexico SFY 08 Standard = At least 34.0%

Source: SM0907

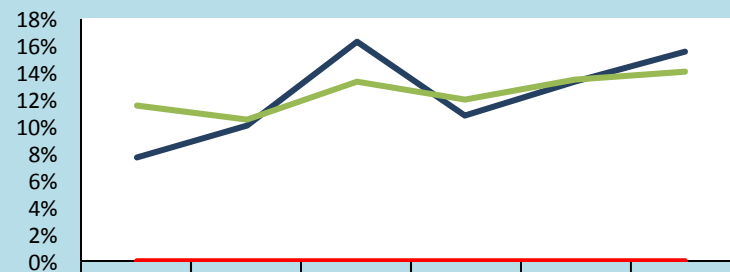
HARDING COUNTY (REGION 4/TOM CASSIDY COUNTY MANAGER)

Trends of Recurrence of Substantiated Maltreatment Within 6 Months of a Previously Substantiated Report of Maltreatment
ACF National Standard = 6.1%



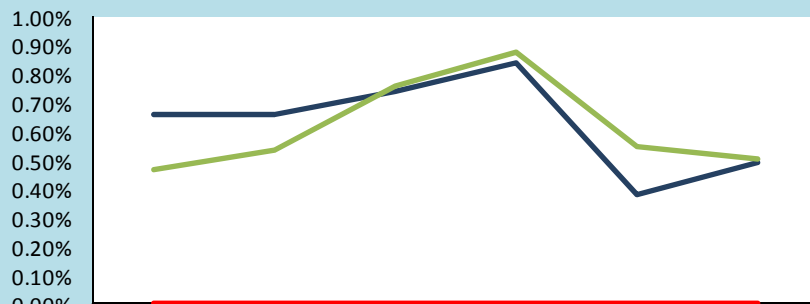
	Q1 SFY07	Q2 SFY07	Q3 SFY07	Q4 SFY07	Q1 SFY08	Q2 SFY08
Harding	0.0%	0.0%	0.0%	0.0%	0.0%	0.0%
Region Total	7.5%	4.2%	11.6%	7.7%	6.6%	5.8%
State Total	6.3%	5.4%	9.7%	7.8%	6.9%	7.6%

Trends of Children Reentering Care within Twelve Months of a Prior Episode
ACF National Standard = 8.6%



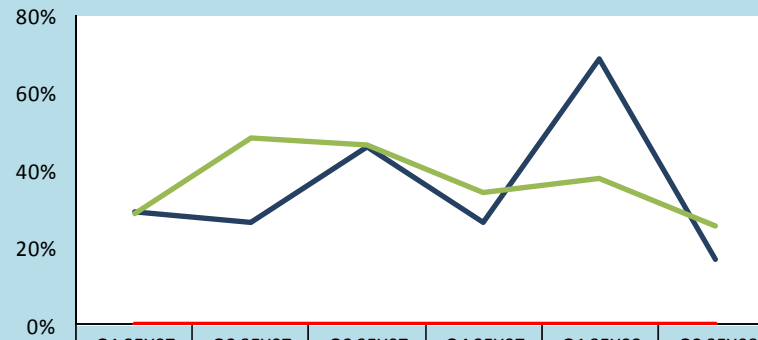
	Q1 SFY07	Q2 SFY07	Q3 SFY07	Q4 SFY07	Q1 SFY08	Q2 SFY08
Harding	0.0%	0.0%	0.0%	0.0%	0.0%	0.0%
Region Total	7.8%	10.1%	16.3%	10.9%	13.4%	15.5%
State Total	11.6%	10.6%	13.4%	12.1%	13.6%	14.2%

Trends of Children Maltreated in Foster Care (performance over Rolling 12 Months)
ACF National Standard = 0.57%



	Yr Ending 09/30/06	Yr Ending 12/31/06	Yr Ending 04/31/07	Yr Ending 06/30/07	Yr Ending 09/30/07	Yr Ending 12/31/07
Harding	0.00%	0.00%	0.00%	0.00%	0.00%	0.00%
Region Total	0.66%	0.66%	0.74%	0.84%	0.38%	0.49%
State Total	0.47%	0.54%	0.76%	0.88%	0.55%	0.51%

Trends of Children With a Finalized Adoption Within 24 Months of Entry Into Care
ACF National Standard = 32.0%



	Q1 SFY07	Q2 SFY07	Q3 SFY07	Q4 SFY07	Q1 SFY08	Q2 SFY08
Harding	0.0%	0.0%	0.0%	0.0%	0.0%	0.0%
Region Total	29.4%	26.7%	46.2%	26.7%	68.8%	17.1%
State Total	28.8%	48.2%	46.3%	34.4%	38.0%	25.7%

Note: The reader should note that in the instance of existing children maltreated in Foster Care, cases are carried forward in the calculation for 12 rolling months. Thus trend data will display the existing cases for 12 consecutive months. For this reason elevated levels across multiple quarter may not indicate new cases for this measure.

LEA COUNTY (REGION 4/CORY MCCARRELL COUNTY MANAGER)

According to the US Census in 2005, Lea County attained an overall population of 55,511 or 2.99% of the state's total population. There were 16,687 children in the county in 2005; this represents 3.26% of the state's total children under 18. While the whole county accounts for **3.26%** of the state's total children under 18, Lea County had **3.91%** of the state's total children in care as of December 31, 2007.

	Race and Ethnicity			
	Lea ¹		Total Population ²	
	Children Under 19 yrs	Children Under 19 yrs of Hispanic Origin	Lea	New Mexico
Total Population	17,604	9,942	55,511	1,854,938
White	91.6%	96.0%	67.1%	66.8%
Black	5.2%	1.7%	4.4%	1.9%
American Indian or Alaskan Native	0.9%	0.8%	1.0%	9.5%
Asian	0.1%	0.2%	0.4%	1.1%
Native Hawaiian or Other Pacific Islander	0.1%	0.2%	0.0%	0.1%
Some other Race	1.7%	1.0%	23.8%	17.0%
Hispanic or Latino			39.6%	42.1%
Under 18 yrs			16,687	511,768
% of Families Living under the poverty Level			17.3%	14.5%

1. Source: U.S. Census Bureau, Population Division\Bureau of Business and Economic Research, Univ. of New Mexico.
2. Source: U.S. Census Bureau\State and County QuickFACTS

Children In Care End 12/31/07 Lea County		
HISPANIC	No	Yes
Percentage	58.3%	41.7%
RACE		Total
American Indian or Alaskan Native		1
Black or African American		15
Unable to Determine		3
White		77
		%
		0.04%
		0.61%
		0.12%
		3.14%

Source: SM0907



Age of Children in Care End 12/31/07													
County	< 1 yr		1 - 5 yrs		6 - 10 yrs		11 - 15 yrs		16 - 17 yrs		18+ yrs		Total
	%	#	%	#	%	#	%	#	%	#	%	#	
Lea	5%	5	33%	32	20%	19	22%	21	15%	14	5%	5	96
Region Total	5%	32	36%	213	22%	131	20%	118	12%	69	5%	27	590
State Total	2%	49	34%	835	33%	810	21%	516	6%	147	4%	98	2,455

Source: SM0907

LEA COUNTY (REGION 4/CORY MCCARRELL COUNTY MANAGER)

PROTECTIVE SERVICES REPORTS AND INVESTIGATIONS - QUARTER 2 SFY 08: OCTOBER - DECEMBER 2007

County	Accepted Reports	Investigations						County % of State Total Investigations ¹	Number of Children Victims	Victim Rate ² per 1,000 children
		Substantiated		Unsubstantiated		Total Investigations				
Lea	137	35	28.2%	89	71.8%	124	2.8%	63	15.1	
Region Total	608	207	32.1%	438	67.9%	645	14.6%	336	18.8	
State Total	3,748	1,041	23.6%	3,362	76.4%	4,403	100.0%	1,589	12.4	

Note: Not all "accepted reports" result in investigations completed during the period under review.

- Both County and Regional data are calculated as a % of the State's total investigations for the period under review.
- For the quarterly *360 Degrees* County Profiles Report this information is calculated by annualizing the quarterly data. For the SFY Annual *360 Degrees* County Profiles Report this information is calculated, based on four quarters of reported data.

Source: SM01a02 and SM06a01

HOW ARE WE DOING?
By comparing "total investigations" for the quarter with "accepted reports" for the quarter, you can get a **sense** of work flow. To get a further sense of work flow, also review the cases with a "pending over 30 days" status and the case weight information for each county.

CPS ALLEGATION TYPES OF CHILD MALTREATMENT - QUARTER 2 SFY 08: OCTOBER - DECEMBER 2007

County	Physical Abuse				Sexual Abuse				Physical Neglect				Totals							
	Total	Substantiated	Unsubstantiated		Total	Substantiated	Unsubstantiated		Total	Substantiated	Unsubstantiated		Total	Substantiated	Unsubstantiated					
Lea	99	28	28.3%	71	71.7%	12	1	8.3%	11	91.7%	342	107	31.3%	235	68.7%	453	136	30.0%	317	70.0%
Region Total	455	119	26.2%	336	73.8%	37	6	16.2%	31	83.8%	1,391	411	29.5%	980	70.5%	1,883	536	28.5%	1,347	71.5%
State Total	3,347	614	18.3%	2,733	81.7%	385	53	13.8%	332	86.2%	8,225	1,900	23.1%	6,325	76.9%	11,957	2,567	21.5%	9,390	78.5%

Note: In every investigation there may be multiple allegations of maltreatment for one or more children. In counties with small populations, very small numbers in any category may render suspect any data collected during the period under review.

Source: SM06a01



PENDING INVESTIGATIONS: DECEMBER 2007

County	Reports Without An Investigation After 30 days		Pending Over 30 Days						Pending Less Than 30 Days		
	11/07	12/07	Baseline 11/04 Total	11/07 Total	12/07 Total	Priority Levels 12/07			Baseline 11/04 Total	11/07 Total	12/07 Total
						E	P1	P2			
Lea	1	0	115	49	39	2	6	31	52	42	36
Region Total	2	0	426	94	73	5	15	53	228	171	167
State Total	3	2	4917	1614	1165	98	239	828	1296	1141	900

Source : SM06a01

LEA COUNTY (REGION 4/CORY MCCARRELL COUNTY MANAGER)

CHILDREN IN AN OUT OF HOME PLACEMENT FOR MORE THAN TEN DAYS WITH AN INITIAL EPSDT¹ EXAMINATION 2ND QUARTER SFY 08



County	Children With Initial EPSDT Exam During Reporting Period		Children Without Initial EPSDT Exam During Reporting Period		Total Children in Out of Home Placement Greater Than 10 Days ²	Children with Initial EPSDT Within 30 Days	
	#	%	#	%	#	#	%
Lea	7	41.2%	10	58.8%	17	5	29.4%
Region Total	35	49.3%	36	50.7%	71	32	45.1%
State Total	144	49.8%	145	50.2%	289	127	43.9%

1. EPSDT = Early and Periodic Screening, Diagnosis and Treatment Medicaid Medical Visits.

2. Report counts all children entering care during the parameter period and remaining in care more than 10 days.

Source: SM10a36

ADOPTION AND ADOLESCENT RESOURCE TEAM –2ND QUARTER SFY 08

	ADOPTION MEASURES NOT ACHIEVED	Total Cases	Not Achieved as % of Total Cases
Lea	0	147	0.0%
Region Total	3	493	0.6%
State Total	67	2,845	2.4%

ADOPTION AND ADOLESCENT RESOURCE TEAM –2ND QUARTER SFY 08

	INDEPENDENT LIVING MEASURES NOT ACHIEVED	Total Cases	Not Achieved as % of Total Cases
Lea	0	68	0.0%
Region Total	6	290	2.1%
State Total	27	1,125	2.4%

Source: JTS Database

Permanency Worker Case Weights SM0904 December 2007 Monthly Report

County	Number of Children in Custody as of 12/31/07	Number of Permanency Worker Positions as of 12/31/07	Number of Children per Permanency Worker as of 12/07
Lea	101	6	16.8
State Total	593	29	20.4
Region Total	2,508	147.5	17.0

Source: December Monthly 2007 SM0904
FTE Position Responsible for Permanency Planning
Includes 110 Children w/No Plan

Investigation Worker Case Weight Report CY 2007

	# of PS Investigation Worker Positions	Total # PS Accepted Reports 2007	Total # PS Completed Investigations 2006	Total # PS Completed Investigations 2007	% of Increase/Decrease in Investigations from CY06	Pending Investigation over 30 days 12/07	CY07 Avg Investigations Completed per Yr per worker	CY07 Avg Investigations Completed per Mo per worker
Lea	5.0	580	637	615	-3.5%	39	123.0	10.3
State Total	25.0	2,684	3,040	2,709	-10.9%	73	108.4	9.0
Region Total	132.5	15,424	16,116	16,005	-0.7%	1,065	120.8	10.1

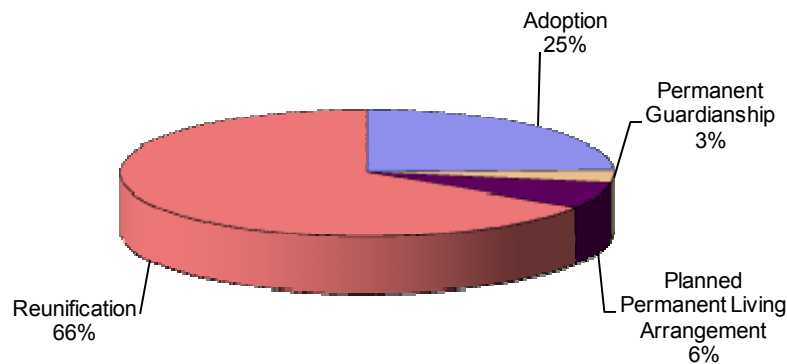
Source: SM01a02

LEA COUNTY (REGION 4/CORY MCCARRELL COUNTY MANAGER)

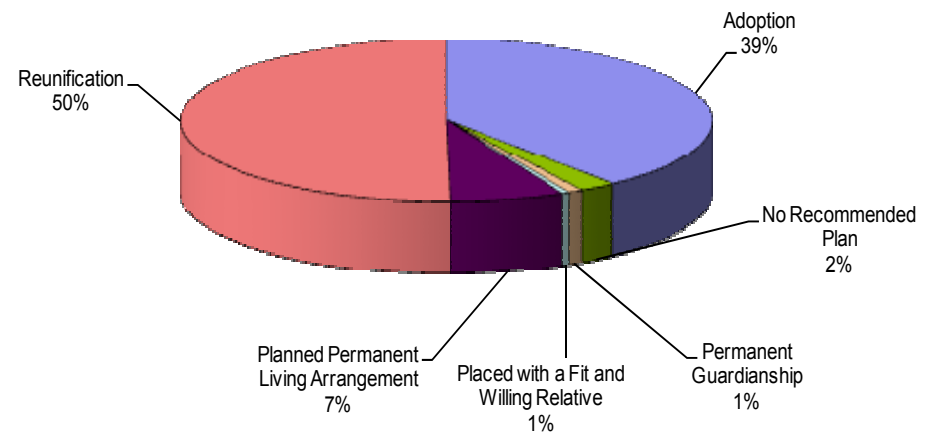
POINT IN TIME MEASURES: DECEMBER 31, 2007

County Lea	Number	Region Total	State Total	% of State Total
NUMBER OF CHILDREN IN CARE (SM0907)	96	590	2,455	3.91%
• AVERAGE LENGTH OF STAY IN FOSTER CARE (IN MONTHS - END QTR) (SM0907)	41.2		21.3	
NUMBER OF FOSTER CARE PROVIDERS (PM02a01)	31	195	975	3.18%
NUMBER OF ADOPTION PROVIDERS (PM02a01)	33	180	1,427	2.31%
NUMBER OF CHILDREN WITH A PLAN OF ADOPTION (PM02a01)	23	159	935	2.46%
• NUMBER CHILDREN FREED AND WAITING (SM0907)	20	121	553	3.62%
• NUMBER OF CHILDREN FREED AND WAITING (WITH RESOURCES) (SM0803)	0	45	175	0.00%
• NUMBER OF CHILDREN FREED AND WAITING (WITHOUT RESOURCES) (SM0803)	11	76	378	2.91%
PERMANENT PLAN LIVING ARRANGEMENT (SM0904)	6	50	165	3.64%
WORKER VISITS WITH CHILDREN IN CARE (SM08-06)	Coming Soon			

**Permanency Plan Goals of Children in Custody
Lea County N = 94
Point In Time December 31, 2007**
Source: SM0904



**Permanency Plan Goals of Children in Custody
New Mexico N = 2381
Point In Time December 31, 2007**
Source: SM0904



LEA COUNTY (REGION 4/CORY MCCARRELL COUNTY MANAGER)

RECURRENCE OF SUBSTANTIATED MALTREATMENT WITHIN 6 MONTHS OF A PREVIOUSLY SUBSTANTIATED REPORT OF MALTREATMENT

County Lea	Total # of Maltreatment Victims	# With Recurrence	% With Recurrence
2nd Qtr SFY 08	49	4	8.2%
Region Total	291	17	5.8%
State Total	1,030	78	7.6%

Round 1 Federal National Standard = No more than 6.1%
New Mexico SFY 08 Standard = No more than 7.0%

Source: SM0907

CHILDREN REENTERING CARE WITHIN TWELVE MONTHS OF A PRIOR EPISODE

County Lea	Total Entering Care #	# Reentering Within 12 Months	% Reentering Within 12 Months
2nd Qtr SFY 08	20	2	10.0%
Region Total	110	17	15.5%
State Total	535	76	14.2%

Round 1 Federal National Standard = No More than 8.6%
New Mexico SFY 08 Standard = No Standard

Source: SM0907

Note: SFY = State Fiscal Year. In New Mexico the State Fiscal year is July 1 through June 30 of the following year.

CHILDREN MALTREATED IN FOSTER CARE (PERFORMANCE OVER A ROLLING 12 MONTHS)

County Lea	Total # of Chil- dren in Care	# Maltreated	% of Maltreated in Foster Care
2nd Qtr SFY 08	161	0	0.00%
Region Total	1,024	5	0.49%
State Total	4,700	24	0.51%

Round 1 Federal National Standard = No more than 0.57%
New Mexico SFY08 State Standard = No more than 0.57%

Source: SM0907

CHILDREN REUNIFIED IN LESS THAN TWELVE MONTHS OF ENTRY INTO CARE

County Lea	Total # Reunified	# Reunified less than 12 mos	% Reunified less than 12 mos
2nd Qtr SFY 08	4	4	100.0%
Region Total	50	44	88.0%
State Total	290	236	81.4%

Round 1 Federal National Standard = At or above 76.2%
New Mexico SFY 08 State Standard = At or above 85.0%

Source: SM0907

CHILDREN IN FOSTER CARE FOR UP TO 12 MONTHS WITH NO MORE THAN TWO PLACEMENT SETTING

County Lea	Total	# With Two or Fewer	% With Two or Fewer
2nd Qtr SFY 08	53	45	84.91%
Region Total	342	259	75.73%
State Total	1,448	1,163	80.32%

Round 1 Federal National Standard = At or Above 86.7%
New Mexico SFY 08 Standard = At or Above 86.7%

Source: SM0907

CHILDREN WITH A FINALIZED ADOPTION WITHIN 24 MONTHS OF ENTRY INTO CARE

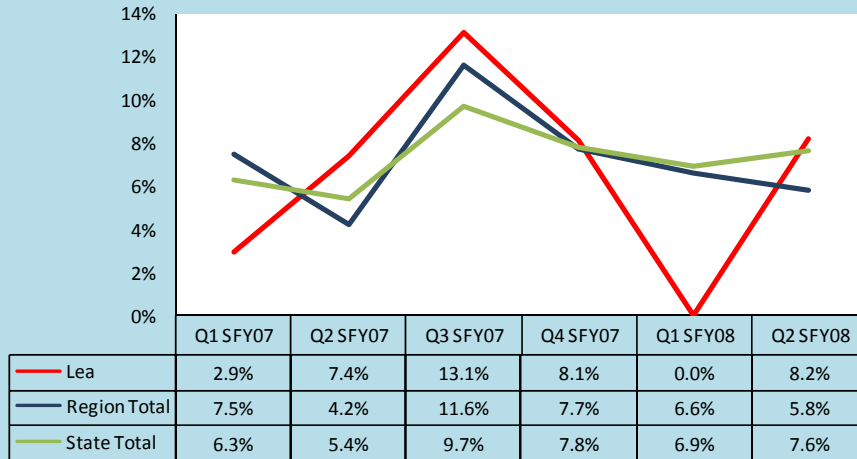
County Lea	Total # Adopted	# <24 mos.	%<24 mos.
2nd Qtr SFY 08	13	2	15.4%
Region Total	35	6	17.1%
State Total	101	26	25.7%

Round 1 Federal National Standard = at least 32.0%
New Mexico SFY 08 Standard = At least 34.0%

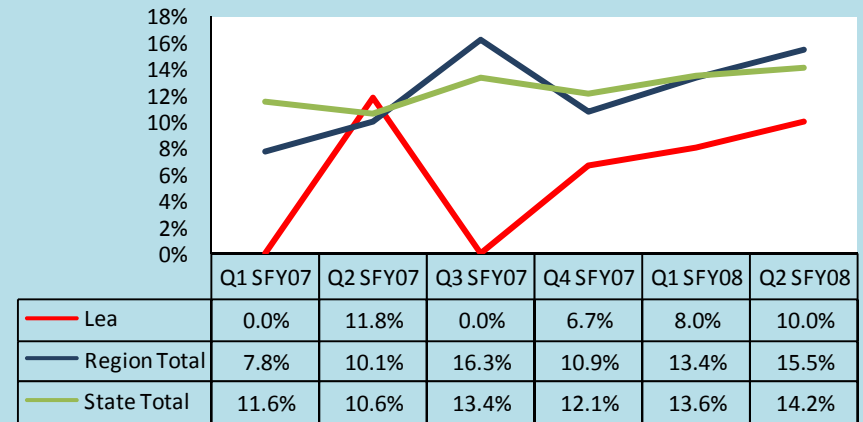
Source: SM0907

LEA COUNTY (REGION 4/CORY MCCARRELL COUNTY MANAGER)

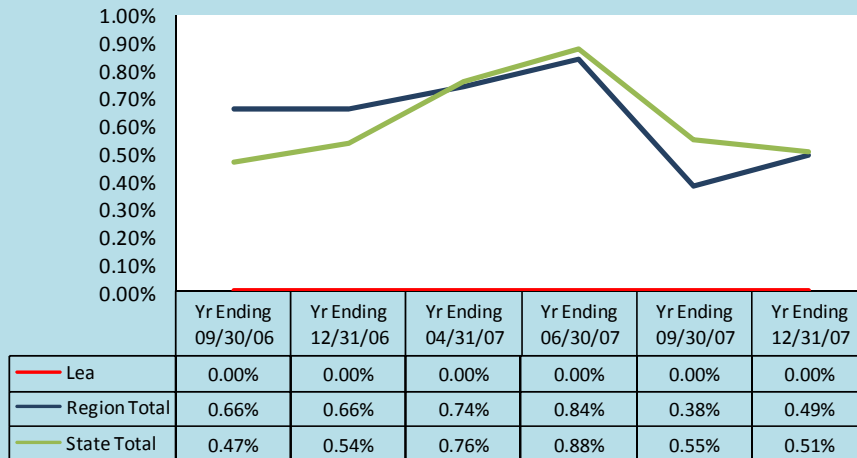
Trends of Recurrence of Substantiated Maltreatment Within 6 Months of a Previously Substantiated Report of Maltreatment
ACF National Standard = 6.1%



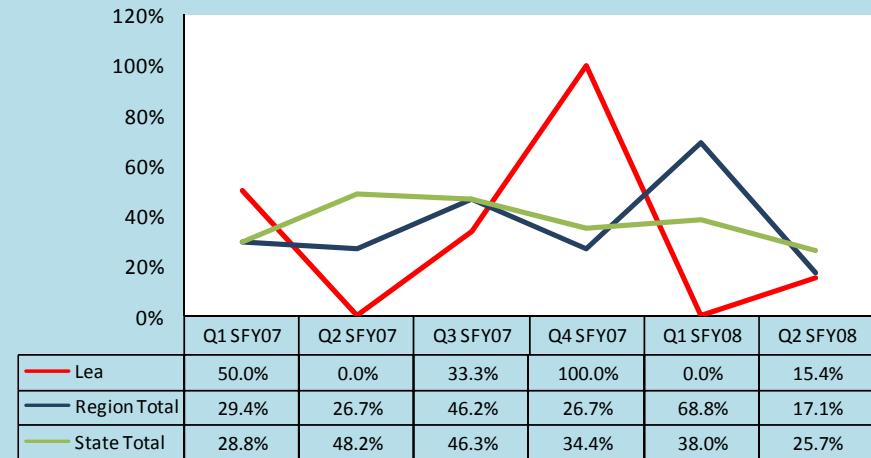
Trends of Children Reentering Care within Twelve Months of A Prior Episode
ACF National Standard = 8.6%



Trends of Children Maltreated in Foster Care (performance over Rolling 12 Months)
ACF National Standard = 0.57%



Trends of Children With a Finalized Adoption Within 24 Months of Entry Into Care
ACF National Standard = 32.0%



Note: The reader should note that in the instance of existing children maltreated in Foster Care, cases are carried forward in the calculation for 12 rolling months. Thus trend data will display the existing cases for 12 consecutive months. For this reason elevated levels across multiple quarter may not indicate new cases for this measure.

QUAY COUNTY (REGION 4/TOM CASSIDY COUNTY MANGER)

According to the US Census in 2005, Quay County attained an overall population of 10,155 or 0.55% of the state's total population. There were 2,541 children in the county in 2005; this represents 0.50% of the state's total children under 18. While the whole county accounts for **0.50%** of the state's total children under 18, Quay County had **2.08%** of the state's total children in care as of December 31, 2007.

	Race and Ethnicity			
	Quay ¹		Total Population ²	
	Children Under 19 yrs	Children Under 19 yrs of Hispanic Origin	Quay	New Mexico
Total Population	2,205	1,049	10,155	1,854,938
White	95.1%	97.3%	82.1%	66.8%
Black	1.4%	0.5%	0.8%	1.9%
American Indian or Alaskan Native	1.7%	1.2%	1.3%	9.5%
Asian	0.3%	0.4%	0.8%	1.1%
Native Hawaiian or Other Pacific Islander	0.3%	0.4%	0.1%	0.1%
Some other Race	0.2%	0.1%	12.1%	17.0%
Hispanic or Latino			38.0%	42.1%
Under 18 yrs			2,541	511,768
% of Families Living under the poverty Level			15.7%	14.5%

1. Source: U.S. Census Bureau, Population Division/Bureau of Business and Economic Research, Univ. of New Mexico.
 2. Source: U.S. Census Bureau/State and County QuickFACTS

Children In Care End 12/31/07 Quay County		
HISPANIC	No	Yes
Percentage	56.9%	43.1%
RACE		Total
Black or African American		1
Unable to Determine		1
White		49
		%
		0.04%
		0.04%
		2.00%

Source: SM0907



Age of Children in Care End 12/31/07													
County	< 1 yr		1 - 5 yrs		6 - 10 yrs		11 - 15 yrs		16 - 17 yrs		18+ yrs		Total
	%	#	%	#	%	#	%	#	%	#	%	#	
Quay	2%	1	33%	17	25%	13	24%	12	16%	8	0%	0	51
Region Total	5%	32	36%	213	22%	131	20%	118	12%	69	5%	27	590
State Total	2%	49	34%	835	33%	810	21%	516	6%	147	4%	98	2,455

Source: SM0907

QUAY COUNTY (REGION 4/TOM CASSIDY COUNTY MANGER)

PROTECTIVE SERVICES REPORTS AND INVESTIGATIONS - QUARTER 2 SFY 08: OCTOBER - DECEMBER 2007

County	Accepted Reports	Investigations						County % of State Total Investigations ¹	Number of Children Victims	Victim Rate ² per 1,000 children
		Substantiated		Unsubstantiated		Total Investigations				
Quay	42	28	52.8%	25	47.2%	53	1.2%	40	63.0	
Region Total	608	207	32.1%	438	67.9%	645	14.6%	336	18.8	
State Total	3,748	1,041	23.6%	3,362	76.4%	4,403	100.0%	1,589	12.4	

Note: Not all "accepted reports" result in investigations completed during the period under review.

- Both County and Regional data are calculated as a % of the State's total investigations for the period under review.
- For the quarterly *360 Degrees* County Profiles Report this information is calculated by annualizing the quarterly data. For the SFY Annual *360 Degrees* County Profiles Report this information is calculated, based on four quarters of reported data.

Source: SM01a02 and SM06a01

HOW ARE WE DOING?
 By comparing "total investigations" for the quarter with "accepted reports" for the quarter, you can get a **sense** of work flow. To get a further sense of work flow, also review the cases with a "pending over 30 days" status and the case weight information for each county.

CPS ALLEGATION TYPES OF CHILD MALTREATMENT - QUARTER 2 SFY 08: OCTOBER - DECEMBER 2007

County	Physical Abuse				Sexual Abuse				Physical Neglect				Totals							
	Total	Substantiated	Unsubstantiated		Total	Substantiated	Unsubstantiated		Total	Substantiated	Unsubstantiated		Total	Substantiated	Unsubstantiated					
Quay	42	22	52.4%	20	47.6%	1	0	0.0%	1	100.0%	91	42	46.2%	49	53.8%	134	64	47.8%	70	52.2%
Region Total	455	119	26.2%	336	73.8%	37	6	16.2%	31	83.8%	1,391	411	29.5%	980	70.5%	1,883	536	28.5%	1,347	71.5%
State Total	3,347	614	18.3%	2,733	81.7%	385	53	13.8%	332	86.2%	8,225	1,900	23.1%	6,325	76.9%	11,957	2,567	21.5%	9,390	78.5%

Note: In every investigation there may be multiple allegations of maltreatment for one or more children. In counties with small populations, very small numbers in any category may render suspect any data collected during the period under review.

Source: SM06a01



PENDING INVESTIGATIONS: DECEMBER 2007

County	Reports Without An Investigation After 30 days		Pending Over 30 Days					Pending Less Than 30 Days			
	11/07	12/07	Baseline 11/04 Total	11/07 Total	12/07 Total	Priority Levels 12/07			Baseline 11/04 Total	11/07 Total	12/07 Total
						E	P1	P2			
Quay	0	0	2	4	2	1	1	0	9	8	15
Region Total	2	0	426	94	73	5	15	53	228	171	167
State Total	3	2	4917	1614	1165	98	239	828	1296	1141	900

Source : SM06a01

QUAY COUNTY (REGION 4/TOM CASSIDY COUNTY MANGER)



CHILDREN IN AN OUT OF HOME PLACEMENT FOR MORE THAN TEN DAYS WITH AN INITIAL EPSDT¹ EXAMINATION 2ND QUARTER SFY 08

County	Children With Initial EPSDT Exam During Reporting Period		Children Without Initial EPSDT Exam During Reporting Period		Total Children in Out of Home Placement Greater Than 10 Days ²	Children with Initial EPSDT Within 30 Days	
	#	%	#	%	#	#	%
Quay	1	25.0%	3	75.0%	4	1	25.0%
Region Total	35	49.3%	36	50.7%	71	32	45.1%
State Total	144	49.8%	145	50.2%	289	127	43.9%

1. EPSDT = Early and Periodic Screening, Diagnosis and Treatment Medicaid Medical Visits.

2. Report counts all children entering care during the parameter period and remaining in care more than 10 days.

Source: SM10a36

ADOPTION AND ADOLESCENT RESOURCE TEAM –2ND QUARTER SFY 08

	ADOPTION MEASURES NOT ACHIEVED	Total Cases	Not Achieved as % of Total Cases
Quay	0	7	0.0%
Region Total	3	493	0.6%
State Total	67	2,845	2.4%

ADOPTION AND ADOLESCENT RESOURCE TEAM –2ND QUARTER SFY 08

	INDEPENDENT LIVING MEASURES NOT ACHIEVED	Total Cases	Not Achieved as % of Total Cases
Quay	0	14	0.0%
Region Total	6	290	2.1%
State Total	27	1,125	2.4%

Source: JTS Database

Permanency Worker Case Weights SM0904 December 2007 Monthly Report

County	Number of Children in Custody as of 12/31/07	Number of Permanency Worker Positions as of 12/31/07	Number of Children per Permanency Worker as of 12/07
Quay/De Baca/Quay	50	1	50.0
State Total	593	29	20.4
Region Total	2,508	147.5	17.0

Source: December Monthly 2007 SM0904
FTE Position Responsible for Permanency Planning
Includes 110 Children w/No Plan

Investigation Worker Case Weight Report CY 2007

County	# of PS Investigation Worker Positions	Total # PS Accepted Reports 2007	Total # PS Completed Investigations 2006	Total # PS Completed Investigations 2007	% of Increase/Decrease in Investigations from CY06	Pending Investigation over 30 days 12/07	CY07 Avg Investigations Completed per Yr per worker	CY07 Avg Investigations Completed per Mo per worker
Quay/De Baca/Quay	2.0	193	170	186	9.4%	3	93.0	7.8
State Total	25.0	2,684	3,040	2,709	-10.9%	73	108.4	9.0
Region Total	132.5	15,424	16,116	16,005	-0.7%	1,065	120.8	10.1

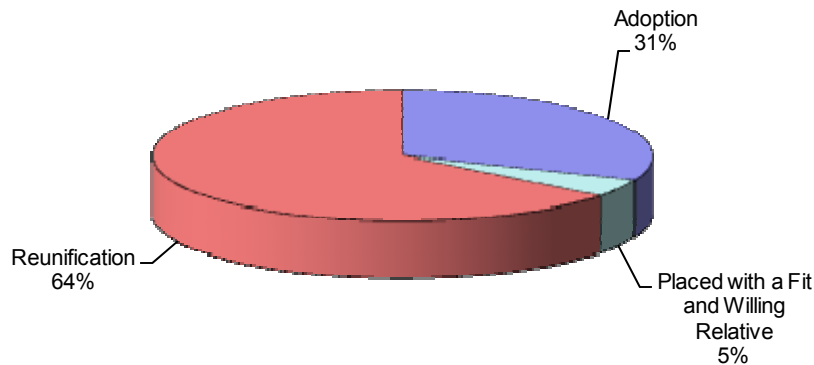
Source: SM01a02

QUAY COUNTY (REGION 4/TOM CASSIDY COUNTY MANGER)

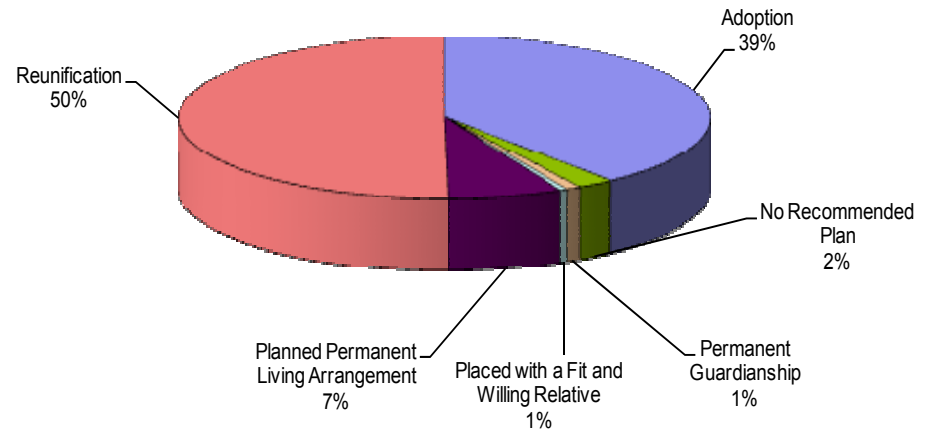
POINT IN TIME MEASURES: DECEMBER 31, 2007

County Quay	Number	Region Total	State Total	% of State Total
NUMBER OF CHILDREN IN CARE (SM0907)	51	590	2,455	2.08%
• AVERAGE LENGTH OF STAY IN FOSTER CARE (IN MONTHS - END QTR) (SM0907)	31.2		21.3	
NUMBER OF FOSTER CARE PROVIDERS (PM02a01)	11	195	975	1.13%
NUMBER OF ADOPTION PROVIDERS (PM02a01)	9	180	1,427	0.63%
NUMBER OF CHILDREN WITH A PLAN OF ADOPTION (PM02a01)	14	159	935	1.50%
• NUMBER CHILDREN FREED AND WAITING (SM0907)	8	121	553	1.45%
• NUMBER OF CHILDREN FREED AND WAITING (WITH RESOURCES) (SM0803)	3	45	175	1.71%
• NUMBER OF CHILDREN FREED AND WAITING (WITHOUT RESOURCES) (SM0803)	5	76	378	1.32%
PERMANENT PLAN LIVING ARRANGEMENT (SM0904)	0	50	195	0.00%
WORKER VISITS WITH CHILDREN IN CARE (SM08-06)	Coming Soon			

**Permanency Plan Goals of Children in Custody
Quay County N = 45
Point In Time December 31, 2007**
Source: SM0904



**Permanency Plan Goals of Children in Custody
New Mexico N = 2381
Point In Time December 31, 2007**
Source: SM0904



QUAY COUNTY (REGION 4/TOM CASSIDY COUNTY MANGER)

RECURRENCE OF SUBSTANTIATED MALTREATMENT WITHIN 6 MONTHS OF A PREVIOUSLY SUBSTANTIATED REPORT OF MALTREATMENT

County Quay	Total # of Maltreatment Victims	# With Recurrence	% With Recurrence
2nd Qtr SFY 08	30	1	3.3%
Region Total	291	17	5.8%
State Total	1,030	78	7.6%

Round 1 Federal National Standard = No more than 6.1%
New Mexico SFY 08 Standard = No more than 7.0%

Source: SM0907

CHILDREN REENTERING CARE WITHIN TWELVE MONTHS OF A PRIOR EPISODE

County Quay	Total Entering Care #	# Reentering Within 12 Months	% Reentering Within 12 Months
2nd Qtr SFY 08	6	3	50.0%
Region Total	110	17	15.5%
State Total	535	76	14.2%

Round 1 Federal National Standard = No More than 8.6%
New Mexico SFY 08 Standard = No Standard

Source: SM0907

Note: SFY = State Fiscal Year. In New Mexico the State Fiscal year is July 1 through June 30 of the following year.

CHILDREN MALTREATED IN FOSTER CARE (PERFORMANCE OVER A ROLLING 12 MONTHS)

County Quay	Total # of Children in Care	# Maltreated	% of Maltreated in Foster Care
2nd Qtr SFY 08	73	0	0.00%
Region Total	1,024	5	0.49%
State Total	4,700	24	0.51%

Round 1 Federal National Standard = No more than 0.57%
New Mexico SFY08 State Standard = No more than 0.57%

Source: SM0907

CHILDREN REUNIFIED IN LESS THAN TWELVE MONTHS OF ENTRY INTO CARE

County Quay	Total # Reunified	# Reunified less than 12 mos	% Reunified less than 12 mos
2nd Qtr SFY 08	4	4	100.0%
Region Total	50	44	88.0%
State Total	290	236	81.4%

Round 1 Federal National Standard = At or above 76.2%
New Mexico SFY 08 State Standard = At or above 85.0%

Source: SM0907

CHILDREN IN FOSTER CARE FOR UP TO 12 MONTHS WITH NO MORE THAN TWO PLACEMENT SETTING

County Quay	Total	# With Two or Fewer	% With Two or Fewer
2nd Qtr SFY 08	29	27	93.10%
Region Total	342	259	75.73%
State Total	1,448	1,163	80.32%

Round 1 Federal National Standard = At or Above 86.7%
New Mexico SFY 08 Standard = At or Above 86.7%

Source: SM0907

CHILDREN WITH A FINALIZED ADOPTION WITHIN 24 MONTHS OF ENTRY INTO CARE

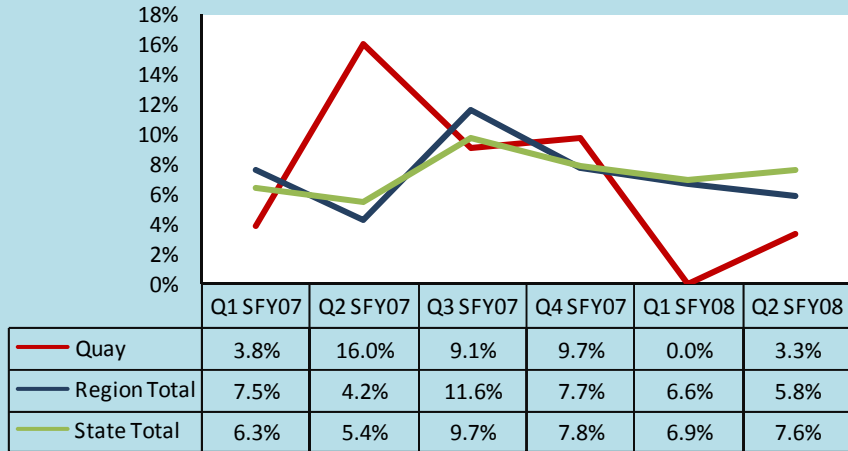
County Quay	Total # Adopted	# <24 mos.	% <24 mos.
2nd Qtr SFY 08	0	0	0.0%
Region Total	35	6	17.1%
State Total	101	26	25.7%

Round 1 Federal National Standard = at least 32.0%
New Mexico SFY 08 Standard = At least 34.0%

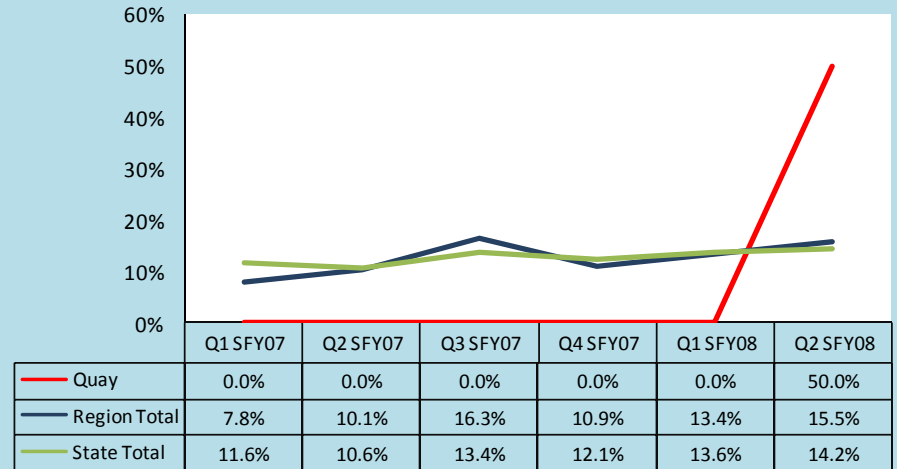
Source: SM0907

QUAY COUNTY (REGION 4/TOM CASSIDY COUNTY MANGER)

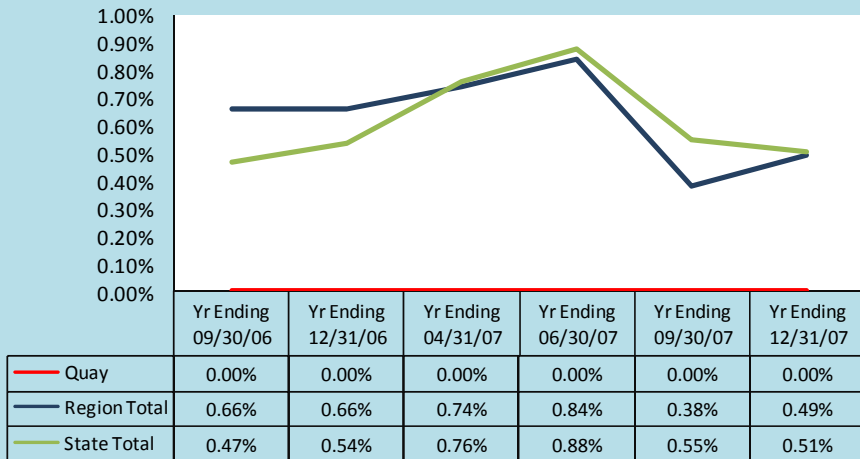
Trends of Recurrence of Substantiated Maltreatment Within 6 Months of a Previously Substantiated Report of Maltreatment
ACF National Standard = 6.1%



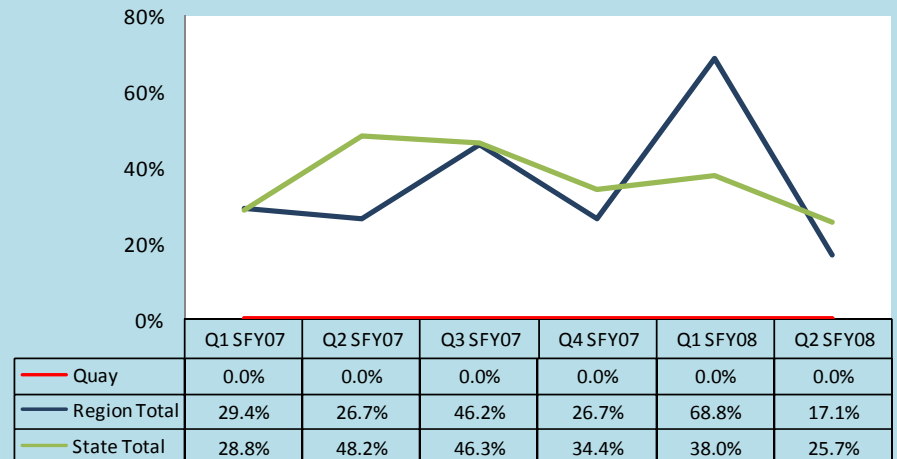
Trends of Children Reentering Care within Twelve Months of a Prior Episode
ACF National Standard = 8.6%



Trends of Children Maltreated in Foster Care (performance over Rolling 12 Months)
ACF National Standard = 0.57%



Trends of Children With a Finalized Adoption Within 24 Months of Entry Into Care
ACF National Standard = 32.0%



Note: The reader should note that in the instance of existing children maltreated in Foster Care, cases are carried forward in the calculation for 12 rolling months. Thus trend data will display the existing cases for 12 consecutive months. For this reason elevated levels across multiple quarter may not indicate new cases for this measure.

ROOSEVELT COUNTY (REGION 4/PATTY SAYLOR COUNTY MANAGER)

According to the US Census in 2005, Roosevelt County attained an overall population of 18,018 or 0.97% of the state's total population. There were 5,060 children in the county in 2005; this represents 0.99% of the state's total children under 18. While the whole county accounts for **0.99%** of the state's total children under 18, Roosevelt County had **2.12%** of the state's total children in care as of December 31, 2007.

	Race and Ethnicity			
	Roosevelt ¹		Total Population ²	
	Children Under 19 yrs	Children Under 19 yrs of Hispanic Origin	Roosevelt	New Mexico
Total Population	5,699	2,579	18,018	1,854,938
White	94.3%	96.6%	74.1%	66.8%
Black	2.7%	1.8%	1.7%	1.9%
American Indian or Alaskan Native	1.5%	1.0%	1.1%	9.5%
Asian	0.0%	0.0%	0.6%	1.1%
Native Hawaiian or Other Pacific Islander	0.0%	0.0%	0.1%	0.1%
Some other Race	0.9%	0.2%	19.8%	17.0%
Hispanic or Latino			33.3%	42.1%
Under 18 yrs			5,060	511,768
% of Families Living under the poverty Level			17.3%	14.5%

1. Source: U.S. Census Bureau, Population Division\Bureau of Business and Economic Research, Univ. of New Mexico.
 2. Source: U.S. Census Bureau\State and County QuickFACTS

Children In Care End 12/31/07 Roosevelt County		
HISPANIC	No	Yes
Percentage	48.1%	51.9%

RACE	Total	%
Black or African American	7	0.29%
White	45	1.83%

Source: SM0907



Age of Children in Care End 12/31/07													
County	< 1 yr		1 - 5 yrs		6 - 10 yrs		11 - 15 yrs		16 - 17 yrs		18+ yrs		Total
	%	#	%	#	%	#	%	#	%	#	%	#	
Roosevelt	8%	4	35%	18	19%	10	15%	8	13%	7	10%	5	52
Region Total	5%	32	36%	213	22%	131	20%	118	12%	69	5%	27	590
State Total	2%	49	34%	835	33%	810	21%	516	6%	147	4%	98	2,455

Source: SM0907

ROOSEVELT COUNTY (REGION 4/PATTY SAYLOR COUNTY MANAGER)

PROTECTIVE SERVICES REPORTS AND INVESTIGATIONS - QUARTER 2 SFY 08: OCTOBER - DECEMBER 2007

County	Accepted Reports	Investigations						County % of State Total Investigations ¹	Number of Children Victims	Victim Rate ² per 1,000 children
		Substantiated	Unsubstantiated	Total Investigations		Substantiated	Unsubstantiated			
Roosevelt	35	12	31.6%	26	68.4%	38	0.9%	15	11.9	
Region Total	608	207	32.1%	438	67.9%	645	14.6%	336	18.8	
State Total	3,748	1,041	23.6%	3,362	76.4%	4,403	100.0%	1,589	12.4	

Note: Not all "accepted reports" result in investigations completed during the period under review.

- Both County and Regional data are calculated as a % of the State's total investigations for the period under review.
- For the quarterly *360 Degrees* County Profiles Report this information is calculated by annualizing the quarterly data. For the SFY Annual *360 Degrees* County Profiles Report this information is calculated, based on four quarters of reported data.

Source: SM01a02 and SM06a01

HOW ARE WE DOING?
By comparing "total investigations" for the quarter with "accepted reports" for the quarter, you can get a **sense** of work flow. To get a further sense of work flow, also review the cases with a "pending over 30 days" status and the case weight information for each county.

CPS ALLEGATION TYPES OF CHILD MALTREATMENT - QUARTER 2 SFY 08: OCTOBER - DECEMBER 2007

Valencia	Physical Abuse				Sexual Abuse				Physical Neglect				Totals							
	Total	Substantiated	Unsubstantiated		Total	Substantiated	Unsubstantiated		Total	Substantiated	Unsubstantiated		Total	Substantiated	Unsubstantiated					
Roosevelt	14	2	14.3%	12	85.7%	4	2	50.0%	2	50.0%	74	17	23.0%	57	77.0%	92	21	22.8%	71	77.2%
Region Total	455	119	26.2%	336	73.8%	37	6	16.2%	31	83.8%	1,391	411	29.5%	980	70.5%	1,883	536	28.5%	1,347	71.5%
State Total	3,347	614	18.3%	2,733	81.7%	385	53	13.8%	332	86.2%	8,225	1,900	23.1%	6,325	76.9%	11,957	2,567	21.5%	9,390	78.5%

Note: In every investigation there may be multiple allegations of maltreatment for one or more children. In counties with small populations, very small numbers in any category may render suspect any data collected during the period under review.

Source: SM06a01



PENDING INVESTIGATIONS: DECEMBER 2007

County	Reports Without An Investigation After 30 days		Pending Over 30 Days					Pending Less Than 30 Days			
	11/07	12/07	Baseline 11/04 Total	11/07 Total	12/07 Total	Priority Levels 12/07			Baseline 11/04 Total	11/07 Total	12/07 Total
						E	P1	P2			
Roosevelt	0	0	35	7	6	1	1	4	21	12	11
Region Total	2	0	426	94	73	5	15	53	228	171	167
State Total	3	2	4917	1614	1165	98	239	828	1296	1141	900

Source : SM06a01

ROOSEVELT COUNTY (REGION 4/PATTY SAYLOR COUNTY MANAGER)



CHILDREN IN AN OUT OF HOME PLACEMENT FOR MORE THAN TEN DAYS WITH AN INITIAL EPSDT¹ EXAMINATION 2ND QUARTER SFY 08

County	Children With Initial EPSDT Exam During Reporting Period		Children Without Initial EPSDT Exam During Reporting Period		Total Children in Out of Home Placement Greater Than 10 Days ²	Children with Initial EPSDT Within 30 Days	
	#	%	#	%	#	#	%
Roosevelt	1	20.0%	4	80.0%	5	1	20.0%
Region Total	35	49.3%	36	50.7%	71	32	45.1%
State Total	144	49.8%	145	50.2%	289	127	43.9%

1. EPSDT = Early and Periodic Screening, Diagnosis and Treatment Medicaid Medical Visits.
2. Report counts all children entering care during the parameter period and remaining in care more than 10 days.

Source: SM10a36

ADOPTION AND ADOLESCENT RESOURCE TEAM –2ND QUARTER SFY 08

	ADOPTION MEASURES NOT ACHIEVED	Total Cases	Not Achieved as % of Total Cases
Roosevelt	0	7	0.0%
Region Total	3	493	0.6%
State Total	67	2,845	2.4%

ADOPTION AND ADOLESCENT RESOURCE TEAM –2ND QUARTER SFY 08

	INDEPENDENT LIVING MEASURES NOT ACHIEVED	Total Cases	Not Achieved as % of Total Cases
Roosevelt	0	47	0.0%
Region Total	6	290	2.1%
State Total	27	1,125	2.4%

Source: JTS Database

Permanency Worker Case Weights SM0904 December 2007 Monthly Report

County	Number of Children in Custody as of 12/31/07	Number of Permanency Worker Positions as of 12/31/07	Number of Children per Permanency Worker as of 12/07
Roosevelt/Curry	143	8	17.9
State Total	593	29	20.4
Region Total	2,508	147.5	17.0

Source: December Monthly 2007 SM0904
FTE Position Responsible for Permanency Planning
Includes 110 Children w/No Plan

Investigation Worker Case Weight Report CY 2007

County	# of PS Investigation Worker Positions	Total # PS Accepted Reports 2007	Total # PS Completed Investigations 2006	Total # PS Completed Investigations 2007	% of Increase/Decrease in Investigations from CY06	Pending Investigation over 30 days 12/07	CY07 Avg Investigations Completed per Yr per worker	CY07 Avg Investigations Completed per Mo per worker
Roosevelt/Curry	6.0	665	736	652	-11.4%	26	108.7	9.1
State Total	25.0	2,684	3,040	2,709	-10.9%	73	108.4	9.0
Region Total	132.5	15,424	16,116	16,005	-0.7%	1,065	120.8	10.1

Source: SM01a02

ROOSEVELT COUNTY (REGION 4/PATTY SAYLOR COUNTY MANAGER)

POINT IN TIME MEASURES: DECEMBER 31, 2007

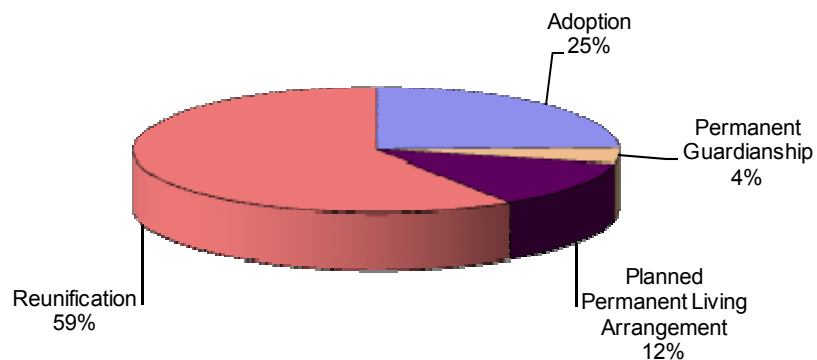
County Roosevelt	Number	Region Total	State Total	% of State Total
NUMBER OF CHILDREN IN CARE (SM0907)	52	590	2,455	2.12%
• AVERAGE LENGTH OF STAY IN FOSTER CARE (IN MONTHS - END QTR) (SM0907)	23.9		21.3	
NUMBER OF FOSTER CARE PROVIDERS (PM02a01)	19	195	975	1.95%
NUMBER OF ADOPTION PROVIDERS (PM02a01)	7	180	1,427	0.49%
NUMBER OF CHILDREN WITH A PLAN OF ADOPTION (PM02a01)	12	159	935	1.28%
• NUMBER CHILDREN FREED AND WAITING (SM0907)	6	121	553	1.08%
• NUMBER OF CHILDREN FREED AND WAITING (WITH RESOURCES) (SM0803)	0	45	175	0.00%
• NUMBER OF CHILDREN FREED AND WAITING (WITHOUT RESOURCES) (SM0803)	6	76	378	1.59%
PERMANENT PLAN LIVING ARRANGEMENT (SM0904)	6	50	165	3.64%
WORKER VISITS WITH CHILDREN IN CARE (SM08-06)	Coming Soon			

Permanency Plan Goals of Children in Custody

Roosevelt County N = 49

Point In Time December 31, 2007

Source: SM0904

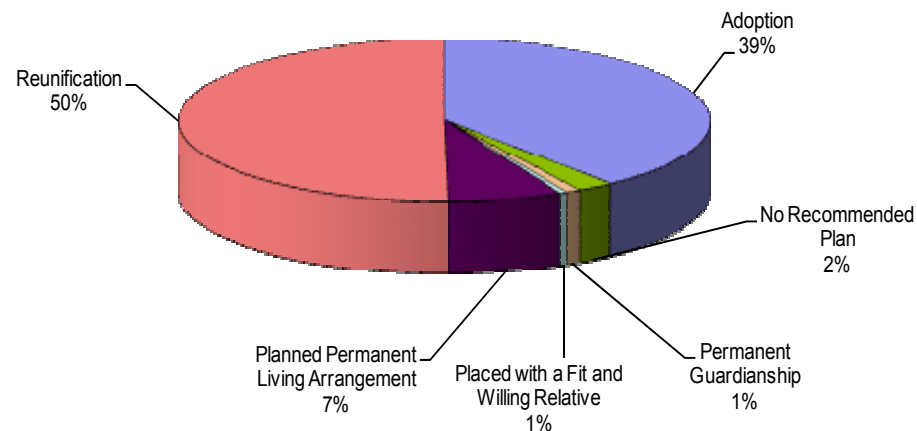


Permanency Plan Goals of Children in Custody

New Mexico N = 2381

Point In Time December 31, 2007

Source: SM0904



ROOSEVELT COUNTY (REGION 4/PATTY SAYLOR COUNTY MANAGER)

RECURRENCE OF SUBSTANTIATED MALTREATMENT WITHIN 6 MONTHS

OF A PREVIOUSLY SUBSTANTIATED REPORT OF MALTREATMENT

County Roosevelt	Total # of Maltreatment Victims	# With Recurrence	% With Recurrence
2nd Qtr SFY 08	10	0	0.0%
Region Total	291	17	5.8%
State Total	1,030	78	7.6%

Round 1 Federal National Standard = No more than 6.1%
New Mexico SFY 08 Standard = No more than 7.0%

Source: SM0907

CHILDREN REENTERING CARE WITHIN TWELVE MONTHS OF A PRIOR EPISODE

County Roosevelt	Total Entering Care #	# Reentering Within 12 Months	% Reentering Within 12 Months
2nd Qtr SFY 08	6	0	0.0%
Region Total	110	17	15.5%
State Total	535	76	14.2%

Round 1 Federal National Standard = No More than 8.6%
New Mexico SFY 08 Standard = No Standard

Source: SM0907

Note: SFY = State Fiscal Year. In New Mexico the State Fiscal year is July 1 through June 30 of the following year.

CHILDREN MALTREATED IN FOSTER CARE (PERFORMANCE OVER A ROLLING 12 MONTHS)

County Roosevelt	Total # of Children in Care	# Maltreated	% of Maltreated in Foster Care
2nd Qtr SFY 08	77	0	0.00%
Region Total	1,024	5	0.49%
State Total	4,700	24	0.51%

Round 1 Federal National Standard = No more than 0.57%
New Mexico SFY08 State Standard = No more than 0.57%

Source: SM0907

CHILDREN REUNIFIED IN LESS THAN TWELVE MONTHS OF ENTRY INTO CARE

County Roosevelt	Total # Reunified	# Reunified less than 12 mos	% Reunified less than 12 mos
2nd Qtr SFY 08	2	1	50.0%
Region Total	50	44	88.0%
State Total	290	236	81.4%

Round 1 Federal National Standard = At or above 76.2%
New Mexico SFY 08 State Standard = At or above 85.0%

Source: SM0907

CHILDREN IN FOSTER CARE FOR UP TO 12 MONTHS WITH NO MORE THAN TWO PLACEMENT SETTING

County Roosevelt	Total	# With Two or Fewer	% With Two or Fewer
2nd Qtr SFY 08	30	24	80.00%
Region Total	342	259	75.73%
State Total	1,448	1,163	80.32%

Round 1 Federal National Standard = At or Above 86.7%
New Mexico SFY 08 Standard = At or Above 86.7%

Source: SM0907

CHILDREN WITH A FINALIZED ADOPTION WITHIN 24 MONTHS OF ENTRY INTO CARE

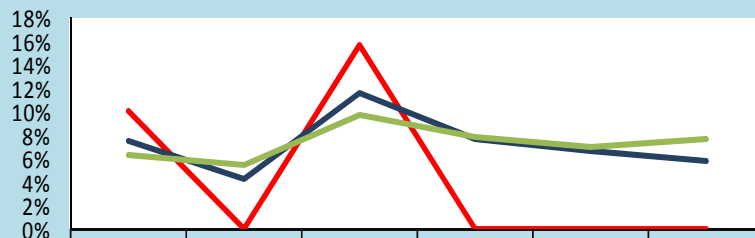
County Roosevelt	Total # Adopted	# <24 mos.	% <24 mos.
2nd Qtr SFY 08	0	0	0.0%
Region Total	35	6	17.1%
State Total	101	26	25.7%

Round 1 Federal National Standard = at least 32.0%
New Mexico SFY 08 Standard = At least 34.0%

Source: SM0907

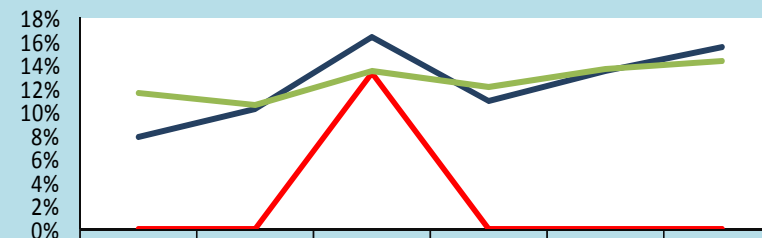
ROOSEVELT COUNTY (REGION 4/PATTY SAYLOR COUNTY MANAGER)

Trends of Recurrence of Substantiated Maltreatment Within 6 Months of a Previously Substantiated Report of Maltreatment
ACF National Standard = 6.1%



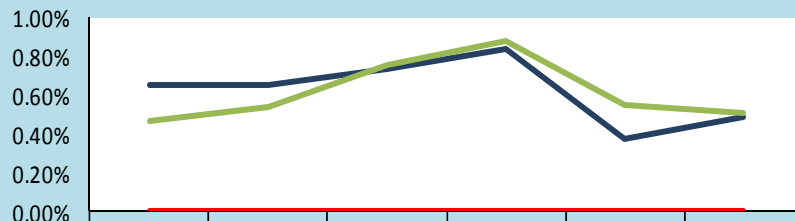
	Q1 SFY07	Q2 SFY07	Q3 SFY07	Q4 SFY07	Q1 SFY08	Q2 SFY08
— Roosevelt	10.0%	0.0%	15.6%	0.0%	0.0%	0.0%
— Region Total	7.5%	4.2%	11.6%	7.7%	6.6%	5.8%
— State Total	6.3%	5.4%	9.7%	7.8%	6.9%	7.6%

Trends of Children Reentering Care within Twelve Months of A Prior Episode
ACF National Standard = 8.6%



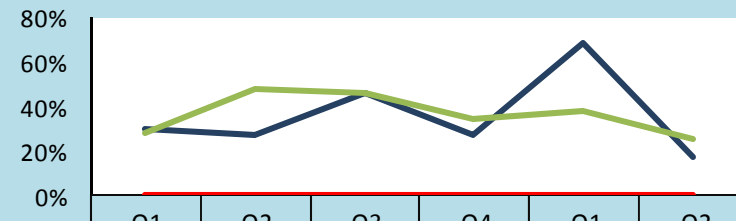
	Q1 SFY07	Q2 SFY07	Q3 SFY07	Q4 SFY07	Q1 SFY08	Q2 SFY08
— Roosevelt	0.0%	0.0%	13.3%	0.0%	0.0%	0.0%
— Region Total	7.8%	10.1%	16.3%	10.9%	13.4%	15.5%
— State Total	11.6%	10.6%	13.4%	12.1%	13.6%	14.2%

Trends of Children Maltreated in Foster Care (performance over Rolling 12 Months)
ACF National Standard = 0.57%



	Yr Ending 09/30/06	Yr Ending 12/31/06	Yr Ending 04/31/07	Yr Ending 06/30/07	Yr Ending 09/30/07	Yr Ending 12/31/07
— Roosevelt	0.00%	0.00%	0.00%	0.00%	0.00%	0.00%
— Region Total	0.66%	0.66%	0.74%	0.84%	0.38%	0.49%
— State Total	0.47%	0.54%	0.76%	0.88%	0.55%	0.51%

Trends of Children With a Finalized Adoption Within 24 Months of Entry Into Care
ACF National Standard = 32.0%



	Q1 SFY07	Q2 SFY07	Q3 SFY07	Q4 SFY07	Q1 SFY08	Q2 SFY08
— Roosevelt	0.0%	0.0%	0.0%	0.0%	0.0%	0.0%
— Region Total	29.4%	26.7%	46.2%	26.7%	68.8%	17.1%
— State Total	28.8%	48.2%	46.3%	34.4%	38.0%	25.7%

Note: The reader should note that in the instance of existing children maltreated in Foster Care, cases are carried forward in the calculation for 12 rolling months. Thus trend data will display the existing cases for 12 consecutive months. For this reason elevated levels across multiple quarter may not indicate new cases for this measure.