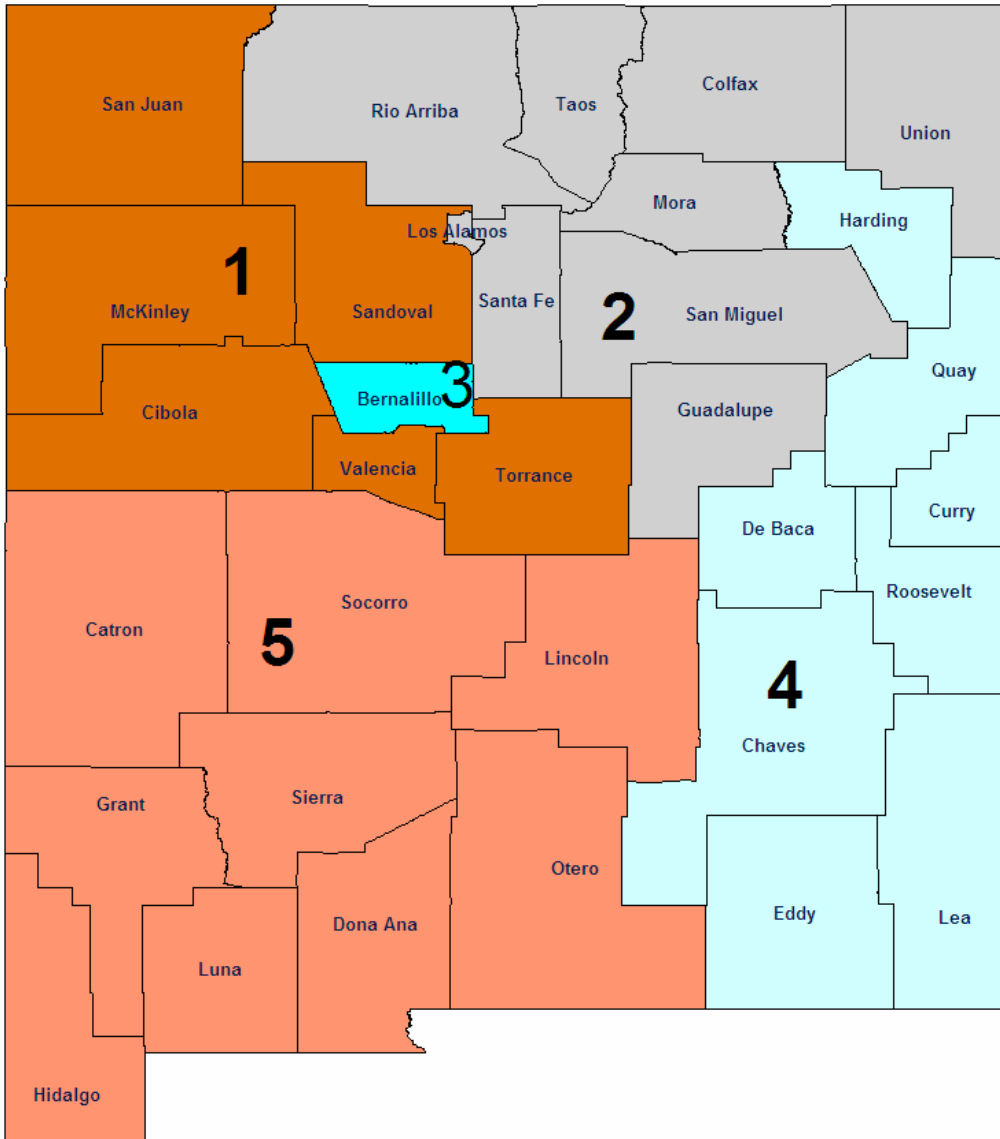


Protective Services *B60 Degrees* County Profiles



Protective Services Director's Office
 (505) 827-8400 www.cyfd.org

Angela Adams, Director
 Maryellen Bearzi Administrative Deputy Director

Francine Anaya, Clinical Deputy Director
 (505) 758-8871

Region 2

Linda McNall (505)827-7450

Region 4

Don Holden (505)356-6688

Region 5

Nick Dagonos (505)524-6400

Lisa Madrid-Schleicher, (Acting) Clinical Deputy
 Director (505) 841-7800

Region 1

David Montoya (505)867-2373

Region 3

Michelle Herrera, (Acting) (505)841-8400





Protective Services Initiatives

Children, Youth and Families

Vision

The Children, Youth and Families Department partners with communities to strengthen families in New Mexico to be productive and self-sufficient.

Mission

CYFD believes in the strengths and resiliency of families who are our partners and for whom we advocate to enhance their safety and well-being. We respectfully serve and support children and families and supervise youth in responsive, community-based system of care that is client-centered, family-focused and culturally competent.

- To continue efforts ensuring timely response to reports of maltreatment, enhancing voluntary services to at risk families, providing safe homes for children in out-of-home care, and working with families to address the risk issues that contribute to child maltreatment
- To improve outcomes addressing the unique need of older youth in faster care in the areas of education, financial assistance and housing
- To enhance visitation with children in foster care through staff training, tracking mechanisms and quality assurance reviews
- To expand foster and adoptive family recruitment efforts to increasing the number of placement resources available for children needing homes
- To partner with the New Mexico Court Improvement Project and the courts to expedite permanency for children by reducing delays, minimizing the need for continuances, expediting appeals and enhancing the quality of representation
- To facilitate the active engagement of parents, foster parents and youth in case planning through Team Decision Making, adoption mediation, video conference and increasing the participation of incarcerated parents

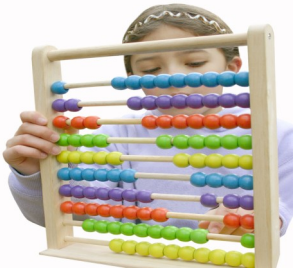
Did You Know???

Background on the CFSR :

The Child and Family Services Review (CFSR) is the Federal government's process for evaluating the performance of State child welfare agencies with regard to achieving positive outcomes for children and families. The CFSR determines the State's conformity across seven outcomes and seven systemic factors. It is authorized by the Social Security Amendments of 1994 requiring the Department of Health and Human Services (HHS) to review child and family services programs funded under titles IV-B and IV-E. The Administration for Children and Families (ACF) coordinates the activities of the CFSR. All 50 states, the District of Columbia, and Puerto Rico completed their first round of reviews by 2004. No state or territory achieved substantial conformity. For Round II, ACF has made the standards more stringent, requiring a higher level of performance by the states. New Mexico is currently in Round II of the federal CFSR.

The CFSR & PIP Process :

The CFSR has two phases: 1) a statewide assessment and 2) an onsite review of outcomes and program systems. The statewide assessment allows the State to compare its performance on certain safety and permanency data indicators with national standards determined by the ACF. The onsite portion of the review includes: (1) case record reviews; (2) interviews with children and families engaged in services; and (3) interviews with community stakeholders, such as the courts and community agencies, foster families, and caseworkers and service providers. The information from these two phases is used to determine whether or not the State is operating in substantial conformity. If a state is not in substantial conformity with an outcome, the state must develop and implement a Program Improvement Plan (PIP). States that do not achieve the improvements will be penalized.



NM completed the statewide assessment and onsite review in 2007. Over 100 individuals representing the judicial community, foster parents, community service providers, caseworkers, child and family advocates and youth in foster care participated in these efforts.

In August of 2007, New Mexico received a courtesy copy of the final report. That report identified the areas where the state was not operating in substantial conformity and where program improvement efforts were needed. CYFD and the ACF have worked together for 10 months to develop an approved PIP. New Mexico has 2 years in which to deploy the PIP activities and an overlapping third year to bring about substantial conformity with all the federal PIP requirements. New Mexico's PIP process, including the overlapping year, ends March 31, 2011.

What's Being Measured? :

The CFSR assesses State performance on 23 items relevant to 7 outcomes and 22 items pertaining to 7 systemic factors. In the Outcomes Section of the report, an overall rating of Strength or Area Needing Improvement is assigned to each of the 23 items. State performance on the seven outcomes is evaluated as Substantially Achieved, Partially Achieved, and Not Achieved.

Results For New Mexico :

The 2007 CFSR identified several areas of high performance in New Mexico with regard to achieving many outcomes for children. New Mexico meets the national standards for two of the national data indicators—Permanency Composite 2: Timeliness of adoptions, and Permanency Composite 3: Achieving permanency for children in foster care for extended time periods. The State did not meet the national standards for national data indicators pertaining to the absence of recurrence of maltreatment, the absence of maltreatment in foster care, the timeliness and permanency of reunification, and placement stability. With regard to systemic factors, New Mexico was found to be in substantial conformity with the factors of Statewide Information System and Quality Assurance System. New Mexico was not in substantial conformity with four of the seven systemic factors—Case Review System, Training, Service Array, and Foster and Adoptive Parent Licensing, Recruitment, and Retention.

CFSR and PIP:

The overall goal behind the CFSR and PIP implementation is to improve safety, permanency, and well being of children across the nation. For New Mexico, reporting data related to PIP measures on a state and county level will help to improve the outcomes in which PIP conformity has not been met. To meet this end, it is beneficial to share how New Mexico is performing at the county level in order to find and address specific areas that need improvement. The *360 Degrees County Profiles* tie into achievement of the PIP by providing publicly available state and county level data every quarter, so that stakeholders in the PIP process can have an accurate and up-to date picture of New Mexico's performance. A portion of the data included in the *360 Degrees County Profiles* looks at the same measures and sub-measures used for New Mexico in the PIP, but drills down to the county level. Policy makers, managers, field workers, and other agents of change can all use these data as touchstones with the common goal of improving safety, permanency, and well being for children, youth, and families in New Mexico.

CHAVES COUNTY (SE REGION 4/VIRGINIA VILLAREAL COUNTY MANAGER)

According to the US Census in 2005, Chaves County attained an overall population of 61,382 or 3.31% of the state's total population. There were 17,864 children in the county in 2005; this represents 3.49% of the state's total children under 18. While the whole county accounts for **3.49%** of the state's total children under 18, Chaves County had **7.08%** of the state's total children in care as of March 31, 2008.

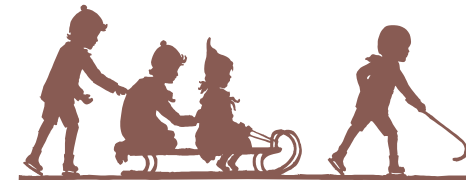
	Race and Ethnicity			
	Chaves ¹		Total Population ²	
	Children Under 19 yrs	Children Under 19 yrs of Hispanic Origin	Chaves	New Mexico
Total Population	18,518	10,960	61,382	1,854,938
White	93.3%	96.3%	72.0%	66.8%
Black	2.8%	1.5%	2.0%	1.9%
American Indian or Alaskan Native	1.4%	0.9%	1.1%	9.5%
Asian	0.1%	0.1%	0.5%	1.1%
Native Hawaiian or Other Pacific Islander	0.1%	0.1%	0.1%	0.1%
Some other Race	1.7%	1.0%	21.2%	17.0%
Hispanic or Latino			43.8%	42.1%
Under 18 yrs			17,864	511,768
% of Families Living under the poverty Level			17.6%	14.5%

1. Source: U.S. Census Bureau, Population Division\Bureau of Business and Economic Research, Univ. of New Mexico.
 2. Source: U.S. Census Bureau\State and County QuickFACTS

Children In Care End 03/31/08 Chaves County		
HISPANIC	No	Yes
Percentage	27.0%	73.0%

RACE	Total	%
American Indian or Alaskan Native	1	0.6%
Asian	2	1.3%
Black or African American	2	1.3%
Unable to Determine	2	1.3%
White	152	95.6%
Total	159	

Source: SM0907



County	Age of Children in Care End 03/31/08										
	< 1 yr		1 - 5 yrs		6 - 10 yrs		11 - 15 yrs		16 - 17 yrs		Total
	%	#	%	#	%	#	%	#	%	#	
Chaves	8%	13	33%	52	26%	41	21%	33	12%	19	159
Region Total	6.5%	34	36.9%	192	23.0%	120	20.1%	105	13.5%	70	521
State Total	5.7%	129	37.1%	832	25.3%	567	20.8%	467	11.3%	253	2,246

Source: SM0907

CHAVES COUNTY (REGION 4/VIRGINIA VILLAREAL COUNTY MANAGER)

PROTECTIVE SERVICES REPORTS AND INVESTIGATIONS - QUARTER 3 SFY 08: JANUARY - MARCH 2008

County	Accepted Reports	Investigations							
		Substantiated		Unsubstantiated		Total Investigations	County % of State Total Investigations ¹	Number of Children Victims	Victim Rate ² per 1,000 children
Chaves	176	72	45.3%	87	54.7%	159	4.7%	120	26.9
Region Total	604	202	36.0%	359	64.0%	561	16.8%	316	17.7
State Total	3,521	842	25.1%	2,506	74.9%	3,348	100.0%	1,217	9.5

Note: Not all "accepted reports" result in investigations completed during the period under review.

- Both County and Regional data are calculated as a % of the State's total investigations for the period under review.
- For the quarterly *360 Degrees* County Profiles Report this information is calculated by annualizing the quarterly data. For the SFY Annual *360 Degrees* County Profiles Report this information is calculated, based on four quarters of reported data.

Source: SM01a02 and SM06a01

HOW ARE WE DOING?
By comparing "total investigations" for the quarter with "accepted reports" for the quarter, you can get a **sense** of work flow. To get a further sense of work flow, also review the cases with a "pending over 30 days" status and the case weight information for each county.

CPS ALLEGATION TYPES OF CHILD MALTREATMENT - QUARTER 3 SFY 08: JANUARY - MARCH 2008

County	Physical Abuse					Sexual Abuse					Physical Neglect					Totals				
	Total	Substantiated	Unsubstantiated	Total	Substantiated	Unsubstantiated	Total	Substantiated	Unsubstantiated	Total	Substantiated	Unsubstantiated	Total	Substantiated	Unsubstantiated					
Chaves	100	31	31.0%	69	69.0%	12	4	33.3%	8	66.7%	326	143	43.9%	183	56.1%	438	178	40.6%	260	59.4%
Region Total	364	92	25.3%	272	74.7%	49	15	30.6%	34	69.4%	1,086	354	32.6%	732	67.4%	1,499	461	30.8%	1,038	69.2%
State Total	2,455	444	18.1%	2,011	81.9%	301	69	22.9%	232	77.1%	5,738	1,433	25.0%	4,305	75.0%	8,494	1,946	22.9%	6,548	77.1%

Note: In every investigation there may be multiple allegations of maltreatment for one or more children. In counties with small populations, very small numbers in any category may render suspect any data collected during the period under review.

Source: SM06a01



PENDING INVESTIGATIONS: MARCH 2008

County	Reports Without An Investigation After 30 days		Pending Over 30 Days						Pending Less Than 30 Days		
	02/08	03/08	Baseline 11/04 Total	02/08		03/08		Priority Levels 03/08			
				Total	Total	Total	E	P1	P2	Baseline 11/04 Total	02/08 Total
Chaves	0	0	174	7	6	1	0	5	46	47	53
Region Total	0	0	426	109	97	9	19	69	228	178	201
State Total	8	5	4,917	1,092	1,172	122	225	825	1,296	1,079	1,112

Source : SM06a01

CHAVES COUNTY (REGION 4/VIRGINIA VILLAREAL COUNTY MANAGER)



CHILDREN IN AN OUT OF HOME PLACEMENT FOR MORE THAN TEN DAYS WITH AN INITIAL EPSDT¹ EXAMINATION 3RD QUARTER SFY 08

County	Children With Initial EPSDT Exam During Reporting Period		Children Without Initial EPSDT Exam During Reporting Period		Total Children in Out of Home Placement Greater Than 10 Days ²	Children with Initial EPSDT Within 30 Days	
	#	%	#	%	#	#	%
Chaves	8	57.1%	6	42.9%	14	8	57.1%
Region Total	25	36.8%	43	63.2%	68	20	29.4%
State Total	141	49.0%	147	51.0%	288	115	39.9%

1. EPSDT = Early and Periodic Screening, Diagnosis and Treatment Medicaid Medical Visits.

2. Report counts all children entering care during the parameter period and remaining in care more than 10 days.

Source: SM10a36

ADOPTION AND ADOLESCENT RESOURCE TEAM –3RD QUARTER SFY 08

	ADOPTION MEASURES NOT ACHIEVED	Total Cases	Not Achieved as % of Total Cases
Chaves	0	102	0.0%
Region Total	6	399	1.5%
State Total	49	3,382	1.4%

ADOPTION AND ADOLESCENT RESOURCE TEAM –3RD QUARTER SFY 08

	INDEPENDENT LIVING MEASURES NOT ACHIEVED	Total Cases	Not Achieved as % of Total Cases
Chaves	0	57	0.0%
Region Total	8	319	2.5%
State Total	25	1,234	2.0%

Source: JTS Database

Permanency Worker Case Weights SM0904 March 2008 Monthly Report

County	Number of Children in Custody as of 12/31/07	Number of Permanency Worker Positions as of 12/31/07	Number of Children per Permanency Worker as of 12/07
Chaves	172	9	19.1
Region Total	555	29	19.1
State Total	2,475	147.5	16.8

Source: March Monthly 2007 SM0904

FTE Position Responsible for Permanency Planning
Includes 110 Children w/No Plan

Investigation Worker Case Weight Report CY 2007

	# of PS Investigation Worker Positions	Total # PS Accepted Reports 2007	Total # PS Completed Investigations 2006	Total # PS Completed Investigations 2007	% of Increase/Decrease in Investigations from CY06	Pending Investigation over 30 days 12/07	CY07 Avg Investigations Completed per Yr per worker	CY07 Avg Investigations Completed per Mo per worker
Chaves	7.0	698	855	693	-18.9%	2	99.0	8.3
Region Total	25.0	2,684	3,040	2,709	-10.9%	73	108.4	9.0
State Total	132.5	15,424	16,116	16,005	-0.7%	1,065	120.8	10.1

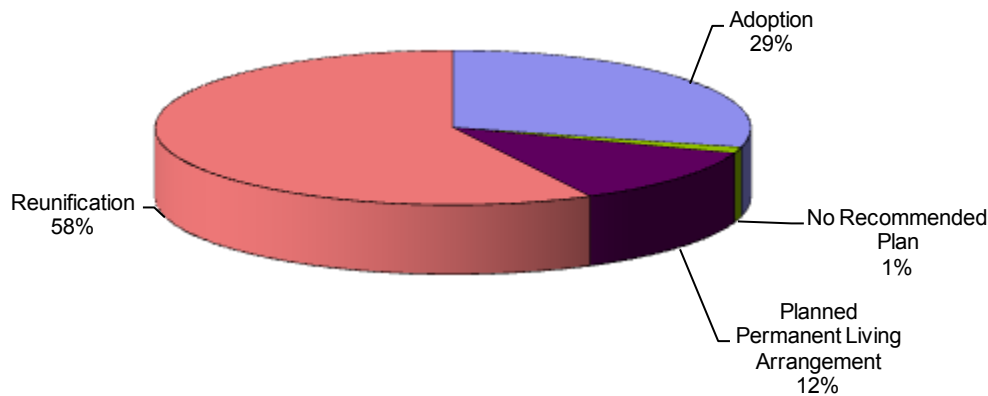
Source: SM01a02

CHAVES COUNTY (REGION 4/VIRGINIA VILLAREAL COUNTY MANAGER)

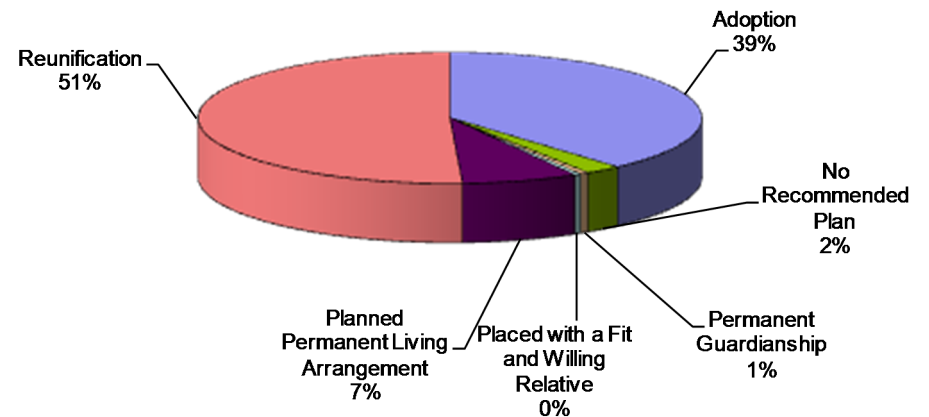
POINT IN TIME MEASURES: MARCH 31, 2008

County Chaves	Number	Region Total	State Total	% of State Total
NUMBER OF CHILDREN IN CARE (SM0907)	159	521	2246	7.08%
• AVERAGE LENGTH OF STAY IN FOSTER CARE (IN MONTHS - END QTR) (SM0907)	16.4	18.4	20.1	
NUMBER OF FOSTER CARE PROVIDERS (PM02a01)	56	174	993	5.64%
NUMBER OF ADOPTION PROVIDERS (PM02a01)	67	188	1496	4.48%
NUMBER OF CHILDREN WITH A PLAN OF ADOPTION (PM02a01)	46	148	895	5.14%
• NUMBER CHILDREN FREED AND WAITING (SM0907)	17	87	451	3.77%
• NUMBER OF CHILDREN FREED AND WAITING (WITH RESOURCES) (SM0803)	2	24	114	1.75%
• NUMBER OF CHILDREN FREED AND WAITING (WITHOUT RESOURCES) (SM0803)	15	63	337	4.45%
PERMANENT PLAN LIVING ARRANGEMENT (SM0904)	19	52	173	10.98%
WORKER VISITS WITH CHILDREN IN CARE (SM08-06)	Coming Soon			

Permanency Plan Goals of Children in Custody
Chaves County N = 158
Point In Time March 31, 2008
 Source: SM0904



Permanency Plan Goals of Children in Custody
New Mexico N = 2327
Point In Time March 31, 2008
 Source: SM0904



CHAVES COUNTY (REGION 4/VIRGINIA VILLAREAL COUNTY MANAGER)

RECURRENCE OF SUBSTANTIATED MALTREATMENT WITHIN 6 MONTHS OF A PREVIOUSLY SUBSTANTIATED REPORT OF MALTREATMENT

County Chaves	Total # of Maltreatment Victims	# With Recurrence	% With Recurrence
3rd Qtr SFY 08	115	9	7.8%
Region Total	316	17	5.4%
State Total	1,047	55	5.3%

Round 1 Federal National Standard = No more than 6.1%
New Mexico SFY 08 Standard = No more than 7.0%

Source: SM0907

CHILDREN REENTERING CARE WITHIN TWELVE MONTHS OF A PRIOR EPISODE

County Chaves	Total Entering Care #	# Reentering Within 12 Months	% Reentering Within 12 Months
3rd Qtr SFY 08	57	3	5.3%
Region Total	128	6	4.7%
State Total	534	43	8.1%

Round 1 Federal National Standard = No More than 8.6%
New Mexico SFY 08 Standard = No Standard

Source: SM0907

Note: SFY = State Fiscal Year. In New Mexico the State Fiscal year is July 1 through June 30 of the following year.

CHILDREN MALTREATED IN FOSTER CARE (PERFORMANCE OVER A ROLLING 12 MONTHS PERIOD)

County Chaves	Total # of Children in Care	# Maltreated	% of Maltreated in Foster Care
3rd Qtr SFY 08	369	4	1.08%
Region Total	992	8	0.81%
State Total	4,680	20	0.43%

Round 1 Federal National Standard = No more than 0.57%
New Mexico SFY08 State Standard = No more than 0.57%

Source: SM0907

CHILDREN REUNIFIED IN LESS THAN TWELVE MONTHS OF ENTRY INTO CARE

County Chaves	Total # Reunified	# Reunified less than 12 mos	% Reunified less than 12 mos
3rd Qtr SFY 08	57	46	80.7%
Region Total	93	70	75.3%
State Total	351	260	74.1%

Round 1 Federal National Standard = At or above 76.2%
New Mexico SFY 08 State Standard = At or above 85.0%

Source: SM0907

CHILDREN IN FOSTER CARE FOR UP TO 12 MONTHS WITH NO MORE THAN TWO PLACEMENT SETTING

County Chaves	Total	# With Two or Fewer	% With Two or Fewer
3rd Qtr SFY 08	135	89	65.93%
Region Total	357	251	70.31%
State Total	1,396	1,007	72.13%

Round 1 Federal National Standard = At or Above 86.7%
New Mexico SFY 08 Standard = At or Above 86.7%

Source: SM0907

CHILDREN WITH A FINALIZED ADOPTION WITHIN 24 MONTHS OF ENTRY INTO CARE

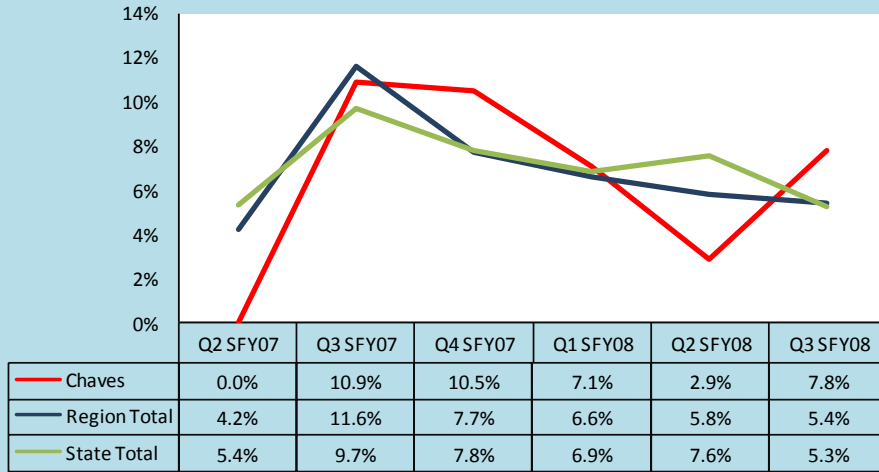
County Chaves	Total # Adopted	# <24 mos.	% <24 mos.
3rd Qtr SFY 08	17	10	58.8%
Region Total	31	12	38.7%
State Total	198	87	43.9%

Round 1 Federal National Standard = at least 32.0%
New Mexico SFY 08 Standard = At least 34.0%

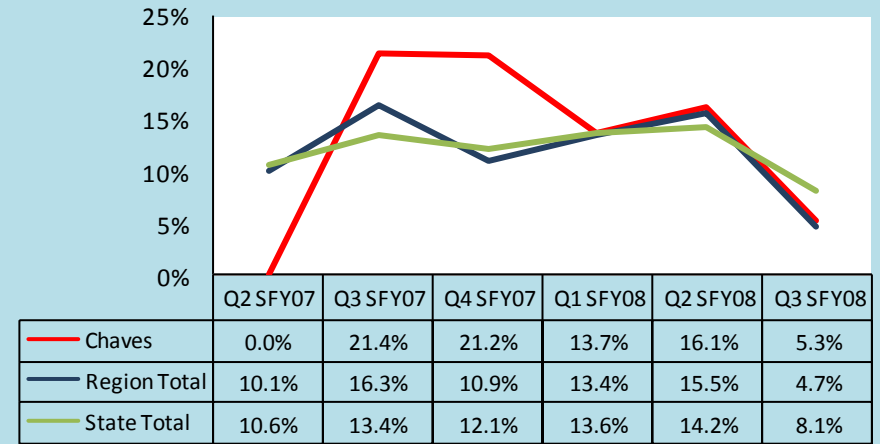
Source: SM0907

CHAVES COUNTY (REGION 4/VIRGINIA VILLAREAL COUNTY MANAGER)

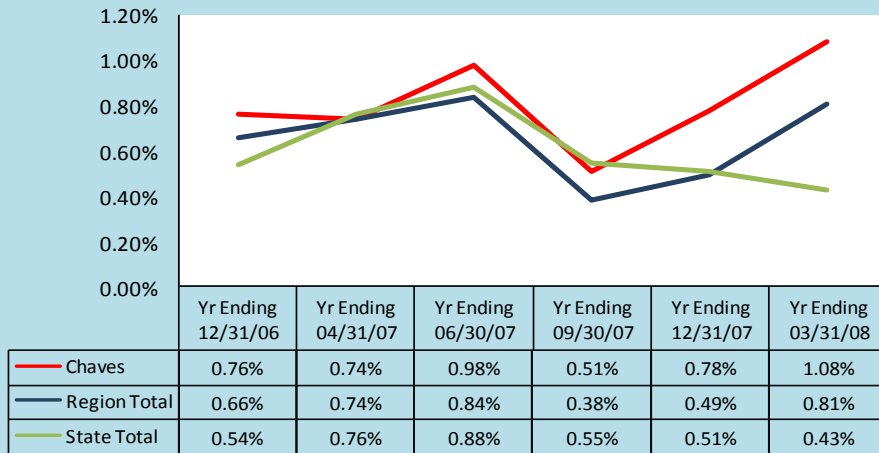
Trends of Recurrence of Substantiated Maltreatment Within 6 Months of a Previously Substantiated Report of Maltreatment
ACF National Standard = 6.1%



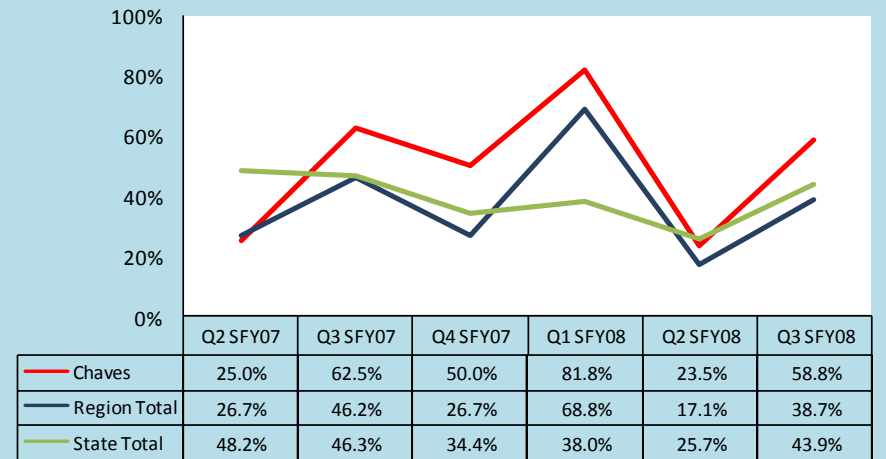
Trends of Children Reentering Care within Twelve Months of a Prior Episode
ACF National Standard = 8.6%



Trends of Children Maltreated in Foster Care (performance over Rolling 12 Months)
ACF National Standard = 0.57%



Trends of Children With a Finalized Adoption Within 24 Months of Entry Into Care
ACF National Standard = 32.0%



Note: The reader should note that in the instance of existing children maltreated in Foster Care, cases are carried forward in the calculation for 12 rolling months. Thus trend data will display the existing cases for 12 consecutive months. For this reason elevated levels across multiple quarter may not indicate new cases for this measure.

CURRY COUNTY (SE REGION 4/PATTY SAYLOR COUNTY MANGER)

According to the US Census in 2005, Curry County attained an overall population of 45,846 or 2.4% of the state's total population. There were 13,387 children in the county in 2005; this represents 2.7% of the state's total children under 18. While the whole county accounts for **2.7%** of the state's total children under 18, Curry County had **3.56%** of the state's total children in care as of March 31, 2008.

	Race and Ethnicity			
	Curry ¹		Total Population ²	
	Children Under 19 yrs	Children Under 19 yrs of Hispanic Origin	Curry	New Mexico
Total Population	14,675	6,115	45,044	1,854,938
White	83.2%	92.2%	72.4%	66.8%
Black	8.5%	4.0%	6.9%	1.9%
American Indian or Alaskan Native	1.3%	1.1%	1.0%	9.5%
Asian	0.2%	0.1%	1.8%	1.1%
Native Hawaiian or Other Pacific Islander	0.2%	0.1%	0.1%	0.1%
Some other Race	4.6%	2.1%	14.1%	17.0%
Hispanic or Latino			30.4%	42.1%
Under 18 yrs			13,561	511,768
% of Families Living under the poverty Level			15.5%	14.5%

1. Source: U.S. Census Bureau, Population Division\Bureau of Business and Economic Research, Univ. of New Mexico.
 2. Source: U.S. Census Bureau\State and County QuickFACTS

Children In Care End 03/31/08 Curry County		
HISPANIC	No	Yes
Percentage	33.8%	66.3%

RACE	Total	%
Black or African American	13	16.3%
Unable to Determine	3	3.8%
White	64	80.0%
Total	80	

Source: SM0907



County	Age of Children in Care End 03/31/08										
	< 1 yr		1 - 5 yrs		6 - 10 yrs		11 - 15 yrs		16 - 17 yrs		Total
	%	#	%	#	%	#	%	#	%	#	
Curry	7%	6	39%	31	22%	18	22%	18	10%	8	80
Region Total	6.5%	34	36.9%	192	23.0%	120	20.1%	105	13.5%	70	521
State Total	5.7%	129	37.1%	832	25.3%	567	20.8%	467	11.3%	253	2,246

Source: SM0907

CURRY COUNTY (REGION 4/PATTY SAYLOR COUNTY MANGER)

PROTECTIVE SERVICES REPORTS AND INVESTIGATIONS - QUARTER 3 SFY 08: JANUARY - MARCH 2008

County	Accepted Reports	Investigations							
		Substantiated		Unsubstantiated		Total Investigations	County % of State Total Investigations ¹	Number of Children Victims	Victim Rate ² per 1,000 children
Curry	106	41	52.6%	37	47.4%	78	2.3%	63	18.6
Region Total	604	202	36.0%	359	64.0%	561	16.8%	316	17.7
State Total	3,521	842	25.1%	2,506	74.9%	3,348	100.0%	1,217	9.5

Note: Not all "accepted reports" result in investigations completed during the period under review.

- Both County and Regional data are calculated as a % of the State's total investigations for the period under review.
- For the quarterly *360 Degrees* County Profiles Report this information is calculated by annualizing the quarterly data. For the SFY Annual *360 Degrees* County Profiles Report this information is calculated, based on four quarters of reported data.

Source: SM01a02 and SM06a01

HOW ARE WE DOING?
By comparing "total investigations" for the quarter with "accepted reports" for the quarter, you can get a **sense** of work flow. To get a further sense of work flow, also review the cases with a "pending over 30 days" status and the case weight information for each county.

CPS ALLEGATION TYPES OF CHILD MALTREATMENT - QUARTER 3 SFY 08: JANUARY - MARCH 2008

County	Physical Abuse				Sexual Abuse				Physical Neglect				Totals							
	Total	Substantiated	Unsubstantiated	%	Total	Substantiated	Unsubstantiated	%	Total	Substantiated	Unsubstantiated	%	Total	Substantiated	Unsubstantiated	%				
Curry	46	17	37.0%	29	63.0%	10	4	40.0%	6	60.0%	149	63	42.3%	86	57.7%	205	84	41.0%	121	59.0%
Region Total	364	92	25.3%	272	74.7%	49	15	30.6%	34	69.4%	1,086	354	32.6%	732	67.4%	1,499	461	30.8%	1,038	69.2%
State Total	2,455	444	18.1%	2,011	81.9%	301	69	22.9%	232	77.1%	5,738	1,433	25.0%	4,305	75.0%	8,494	1,946	22.9%	6,548	77.1%

Note: In every investigation there may be multiple allegations of maltreatment for one or more children. In counties with small populations, very small numbers in any category may render suspect any data collected during the period under review.

Source: SM06a01



PENDING INVESTIGATIONS: MARCH 2008

County	Reports Without An Investigation After 30 days		Pending Over 30 Days						Pending Less Than 30 Days		
	02/08	03/08	Baseline 11/04 Total	02/08 Total	03/08 Total	Priority Levels 03/08			Baseline 11/04 Total	02/08 Total	03/08 Total
						E	P1	P2			
Curry	0	0	65	28	37	5	6	26	48	35	40
Region Total	0	0	426	109	97	9	19	69	228	178	201
State Total	8	5	4,917	1,092	1,172	122	225	825	1,296	1,079	1,112

Source : SM06a01

CURRY COUNTY (REGION 4/PATTY SAYLOR COUNTY MANGER)



CHILDREN IN AN OUT OF HOME PLACEMENT FOR MORE THAN TEN DAYS WITH AN INITIAL EPSDT¹ EXAMINATION 3RD QUARTER SFY 08

County	Children With Initial EPSDT Exam During Reporting Period		Children Without Initial EPSDT Exam During Reporting Period		Total Children in Out of Home Placement Greater Than 10 Days ²	Children with Initial EPSDT Within 30 Days	
	#	%	#	%	#	#	%
Curry	5	33.3%	10	66.7%	15	4	26.7%
Region Total	25	36.8%	43	63.2%	68	20	29.4%
State Total	141	49.0%	147	51.0%	288	115	39.9%

1. EPSDT = Early and Periodic Screening, Diagnosis and Treatment Medicaid Medical Visits.
2. Report counts all children entering care during the parameter period and remaining in care more than 10 days.

Source: SM10a36

ADOPTION AND ADOLESCENT RESOURCE TEAM –3RD QUARTER SFY 08

	ADOPTION MEASURES NOT ACHIEVED	Total Cases	Not Achieved as % of Total Cases
Curry	3	69	4.3%
Region Total	6	399	1.5%
State Total	49	3,382	1.4%

ADOPTION AND ADOLESCENT RESOURCE TEAM –3RD QUARTER SFY 08

	INDEPENDENT LIVING MEASURES NOT ACHIEVED	Total Cases	Not Achieved as % of Total Cases
Curry	3	52	5.8%
Region Total	8	319	2.5%
State Total	25	1,234	2.0%

Source: JTS Database

Permanency Worker Case Weights SM0904 March 2008 Monthly Report

County	Number of Children in Custody as of 12/31/07	Number of Permanency Worker Positions as of 12/31/07	Number of Children per Permanency Worker as of 12/07
Curry/Roosevelt	143	8	17.9
Region Total	555	29	19.1
State Total	2,475	147.5	16.8

Source: March Monthly 2007 SM0904
FTE Position Responsible for Permanency Planning
Includes 110 Children w/No Plan

Investigation Worker Case Weight Report CY 2007

	# of PS Investigation Worker Positions	Total # PS Accepted Reports 2007	Total # PS Completed Investigations 2006	Total # PS Completed Investigations 2007	% of Increase/Decrease in Investigations from CY06	Pending Investigation over 30 days 12/07	CY07 Avg Investigations Completed per Yr per worker	CY07 Avg Investigations Completed per Mo per worker
Curry/Roosevelt	6.0	665	736	652	-11.4%	26	108.7	9.1
Region Total	25.0	2,684	3,040	2,709	-10.9%	73	108.4	9.0
State Total	132.5	15,424	16,116	16,005	-0.7%	1,065	120.8	10.1

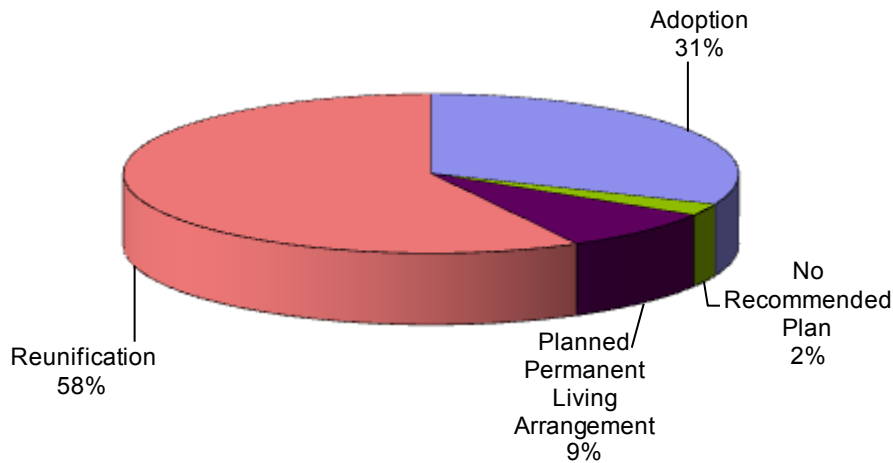
Source: SM01a02

CURRY COUNTY (REGION 4/PATTY SAYLOR COUNTY MANGER)

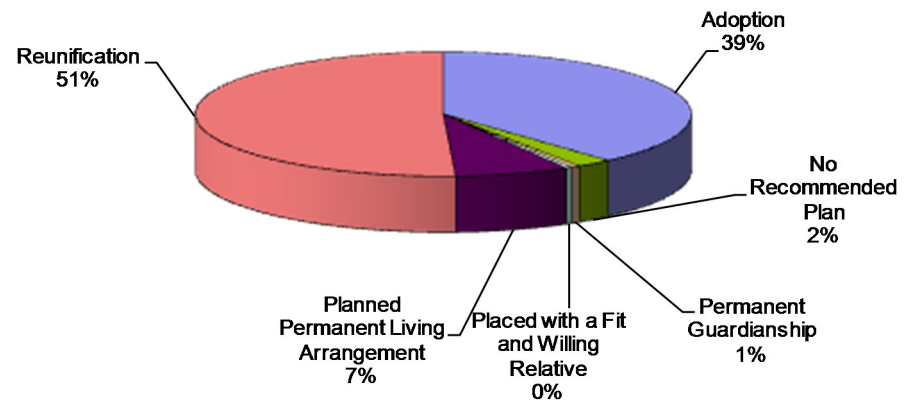
POINT IN TIME MEASURES: MARCH 31, 2008

County Curry	Number	Region Total	State Total	% of State Total
NUMBER OF CHILDREN IN CARE (SM0907)	80	521	2,246	3.56%
• AVERAGE LENGTH OF STAY IN FOSTER CARE (IN MONTHS - END QTR) (SM0907)	20.8	18.4	20.1	
NUMBER OF FOSTER CARE PROVIDERS (PM02a01)	17	174	993	1.71%
NUMBER OF ADOPTION PROVIDERS (PM02a01)	18	188	1,496	1.20%
NUMBER OF CHILDREN WITH A PLAN OF ADOPTION (PM02a01)	26	148	895	2.91%
• NUMBER CHILDREN FREED AND WAITING (SM0907)	20	87	451	4.43%
• NUMBER OF CHILDREN FREED AND WAITING (WITH RESOURCES) (SM0803)	5	24	114	4.39%
• NUMBER OF CHILDREN FREED AND WAITING (WITHOUT RESOURCES) (SM0803)	15	63	337	4.45%
PERMANENT PLAN LIVING ARRANGEMENT (SM0904)	7	52	173	4.05%
WORKER VISITS WITH CHILDREN IN CARE (SM08-06)	Coming Soon			

Permanency Plan Goals of Children in Custody
Curry County N = 83
Point In Time March 31, 2008
 Source: SM0904



Permanency Plan Goals of Children in Custody
New Mexico N = 2327
Point In Time March 31, 2008
 Source: SM0904



CURRY COUNTY (REGION 4/PATTY SAYLOR COUNTY MANGER)

RECURRENCE OF SUBSTANTIATED MALTREATMENT WITHIN 6 MONTHS OF A PREVIOUSLY SUBSTANTIATED REPORT OF MALTREATMENT

County Curry	Total # of Maltreatment Victims	# With Recurrence	% With Recurrence
3rd Qtr SFY 08	57	8	14.0%
Region Total	316	17	5.4%
State Total	1,047	55	5.3%

Round 1 Federal National Standard = No more than 6.1%
New Mexico SFY 08 Standard = No more than 7.0%

Source: SM0907

CHILDREN REENTERING CARE WITHIN TWELVE MONTHS OF A PRIOR EPISODE

County Curry	Total Entering Care #	# Reentering Within 12 Months	% Reentering Within 12 Months
3rd Qtr SFY 08	24	1	4.2%
Region Total	128	6	4.7%
State Total	534	43	8.1%

Round 1 Federal National Standard = No More than 8.6%
New Mexico SFY 08 Standard = No Standard

Source: SM0907

Note: SFY = State Fiscal Year. In New Mexico the State Fiscal year is July 1 through June 30 of the following year.

CHILDREN MALTREATED IN FOSTER CARE (PERFORMANCE OVER A ROLLING 12 MONTHS PERIOD)

County Curry	Total # of Chil- dren in Care	# Maltreated	% of Maltreated in Foster Care
3rd Qtr SFY 08	165	2	1.21%
Region Total	992	8	0.81%
State Total	4,680	20	0.43%

Round 1 Federal National Standard = No more than 0.57%
New Mexico SFY08 State Standard = No more than 0.57%

Source: SM0907

CHILDREN REUNIFIED IN LESS THAN TWELVE MONTHS OF ENTRY INTO CARE

County Curry	Total # Reunified	# Reunified less than 12 mos	% Reunified less than 12 mos
3rd Qtr SFY 08	18	11	61.1%
Region Total	93	70	75.3%
State Total	351	260	74.1%

Round 1 Federal National Standard = At or above 76.2%
New Mexico SFY 08 State Standard = At or above 85.0%

Source: SM0907

CHILDREN IN FOSTER CARE FOR UP TO 12 MONTHS WITH NO MORE THAN TWO PLACEMENT SETTING

County Curry	Total	# With Two or Fewer	% With Two or Fewer
3rd Qtr SFY 08	51	40	78.43%
Region Total	357	251	70.31%
State Total	1,396	1,007	72.13%

Round 1 Federal National Standard = At or Above 86.7%
New Mexico SFY 08 Standard = At or Above 86.7%

Source: SM0907

CHILDREN WITH A FINALIZED ADOPTION WITHIN 24 MONTHS OF ENTRY INTO CARE

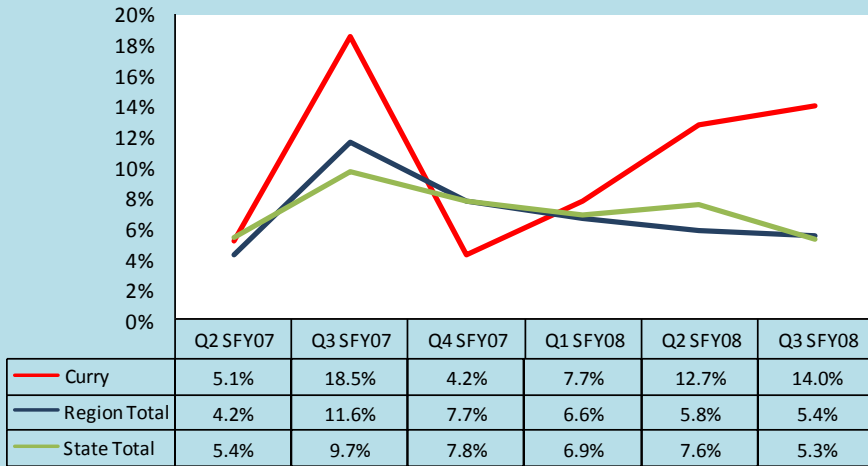
County Curry	Total # Adopted	# <24 mos.	%<24 mos.
3rd Qtr SFY 08	2	0	0.0%
Region Total	31	12	38.7%
State Total	198	87	43.9%

Round 1 Federal National Standard = at least 32.0%
New Mexico SFY 08 Standard = At least 34.0%

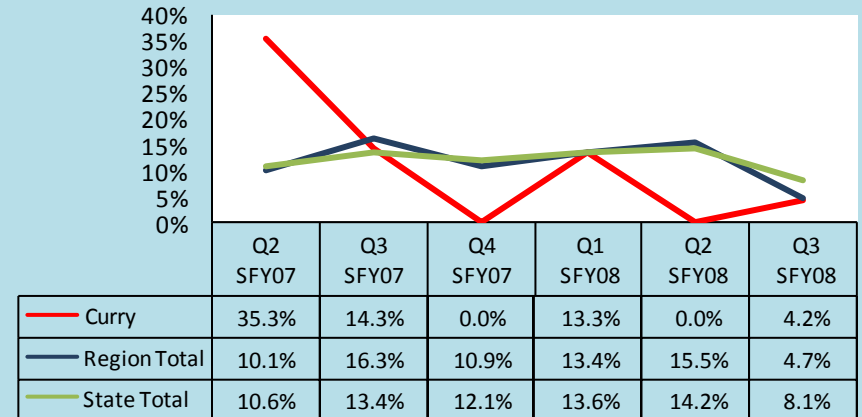
Source: SM0907

CURRY COUNTY (REGION 4/PATTY SAYLOR COUNTY MANGER)

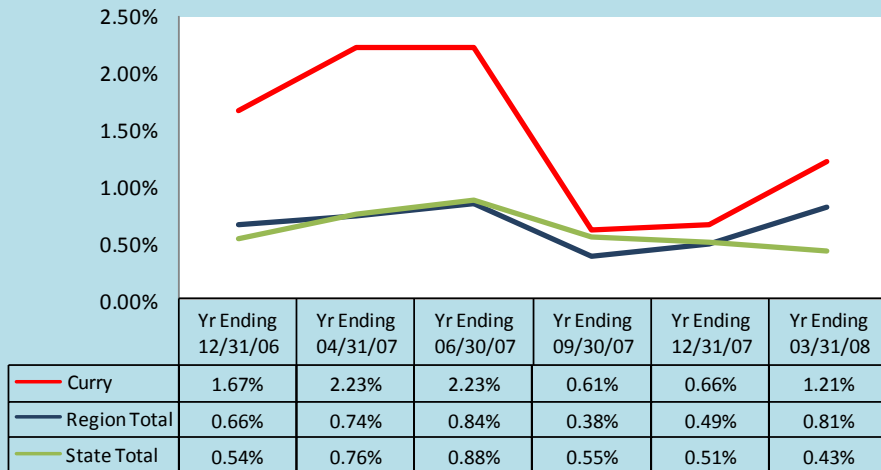
Trends of Recurrence of Substantiated Maltreatment Within 6 Months of a Previously Substantiated Report of Maltreatment
ACF National Standard = 6.1%



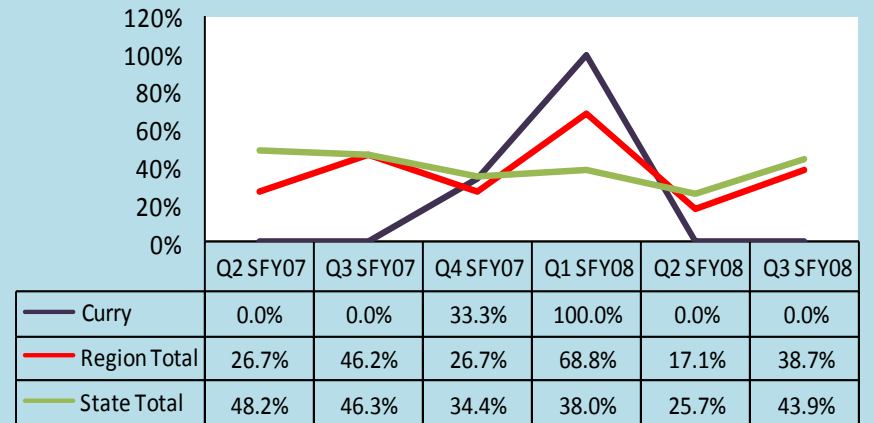
Trends of Children Reentering Care within Twelve Months of A Prior Episode
ACF National Standard = 8.6%



Trends of Children Maltreated in Foster Care (performance over Rolling 12 Months)
ACF National Standard = 0.57%



Trends of Children With a Finalized Adoption Within 24 Months of Entry Into Care
ACF National Standard = 32.0%



Note: The reader should note that in the instance of existing children maltreated in Foster Care, cases are carried forward in the calculation for 12 rolling months. Thus trend data will display the existing cases for 12 consecutive months. For this reason elevated levels across multiple quarter may not indicate new cases for this measure.

DE BACA COUNTY (SE REGION 4/TOM CASSIDY COUNTY MANGER)

According to the US Census in 2005, De Baca County attained an overall population of 2,240 or 0.12% of the state's total population. There were 540 children in the county in 2005; this represents 0.11% of the state's total children under 18. While the whole county accounts for **0.11%** of the state's total children under 18, De Baca County had **0.18%** of the state's total children in care as of March 31, 2008.

	Race and Ethnicity			
	De Baca ¹		Total Population ²	
	Children Under 19 yrs	Children Under 19 yrs of Hispanic Origin	De Baca	New Mexico
Total Population	434	184	2,240	1,854,938
White	97.2%	97.3%	84.0%	66.8%
Black	0.5%	1.1%	0.0%	1.9%
American Indian or Alaskan Native	1.6%	1.6%	0.9%	9.5%
Asian	0.0%	0.0%	0.2%	1.1%
Native Hawaiian or Other Pacific Islander	0.0%	0.0%	0.0%	0.1%
Some other Race	0.2%	0.0%	12.5%	17.0%
Hispanic or Latino			35.3%	42.1%
Under 18 yrs			540	511,768
% of Families Living under the poverty Level			13.6%	14.5%

1. Source: U.S. Census Bureau, Population Division\Bureau of Business and Economic Research, Univ. of New Mexico.
 2. Source: U.S. Census Bureau\State and County QuickFACTS

Children In Care End 03/31/08 De Baca County		
HISPANIC	No	Yes
Percentage	100.0%	0.0%
RACE	Total	%
White	0	0.00%
Total		

Source: SM0907



Age of Children in Care End 03/31/08											
County	< 1 yr		1 - 5 yrs		6 - 10 yrs		11 - 15 yrs		16 - 17 yrs		Total
	%	#	%	#	%	#	%	#	%	#	
De Baca	0%	0	0%	0	0%	0	0%	0	100%	4	4
Region Total	6.5%	34	36.9%	192	23.0%	120	20.1%	105	13.5%	70	521
State Total	5.7%	129	37.1%	832	25.3%	567	20.8%	467	11.3%	253	2,246

Source: SM0907

DE BACA COUNTY (REGION 4/TOM CASSIDY COUNTY MANGER)

PROTECTIVE SERVICES REPORTS AND INVESTIGATIONS - QUARTER 3 SFY 08: JANUARY - MARCH 2008

County	Accepted Reports	Investigations							
		Substantiated		Unsubstantiated		Total Investigations	County % of State Total Investigations ¹	Number of Children Victims	Victim Rate ² per 1,000 children
De Baca	3	1	16.7%	5	83.3%	6	0.2%	1	7.4
Region Total	604	202	36.0%	359	64.0%	561	16.8%	316	17.7
State Total	3,521	842	25.1%	2,506	74.9%	3,348	100.0%	1,217	9.5

Note: Not all "accepted reports" result in investigations completed during the period under review.

- Both County and Regional data are calculated as a % of the State's total investigations for the period under review.
- For the quarterly *360 Degrees* County Profiles Report this information is calculated by annualizing the quarterly data. For the SFY Annual *360 Degrees* County Profiles Report this information is calculated, based on four quarters of reported data.

Source: SM01a02 and SM06a01

HOW ARE WE DOING?
By comparing "total investigations" for the quarter with "accepted reports" for the quarter, you can get a **sense** of work flow. To get a further sense of work flow, also review the cases with a "pending over 30 days" status and the case weight information for each county.

CPS ALLEGATION TYPES OF CHILD MALTREATMENT - QUARTER 3 SFY 08: JANUARY - MARCH 2008

County	Physical Abuse				Sexual Abuse				Physical Neglect				Totals			
	Total	Substantiated	Unsubstantiated	%	Total	Substantiated	Unsubstantiated	%	Total	Substantiated	Unsubstantiated	%	Total	Substantiated	Unsubstantiated	%
De Baca	7	0	7	0.0%	0	0	0	0.0%	10	1	9	10.0%	17	1	16	94.1%
Region Total	364	92	272	25.3%	49	15	34	30.6%	1,086	354	732	67.4%	1,499	461	1,038	69.2%
State Total	2,455	444	2,011	18.1%	301	69	232	22.9%	5,738	1,433	4,305	75.0%	8,494	1,946	6,548	77.1%

Note: In every investigation there may be multiple allegations of maltreatment for one or more children. In counties with small populations, very small numbers in any category may render suspect any data collected during the period under review.

Source: SM06a01



PENDING INVESTIGATIONS: MARCH 2008

County	Reports Without An Investigation After 30 days		Pending Over 30 Days						Pending Less Than 30 Days			
	02/08	03/08	Baseline 11/04 Total	02/08 Total	03/08 Total	Priority Levels 03/08			Baseline 11/04 Total	02/08 Total	03/08 Total	
						E	P1	P2				
De Baca	0	0	0	0	0	0	0	0	0	2	1	2
Region Total	0	0	426	109	97	9	19	69	228	178	201	
State Total	8	5	4,917	1,092	1,172	122	225	825	1,296	1,079	1,112	

Source : SM06a01

DE BACA COUNTY (REGION 4/TOM CASSIDY COUNTY MANGER)



CHILDREN IN AN OUT OF HOME PLACEMENT FOR MORE THAN TEN DAYS WITH AN INITIAL EPSDT¹ EXAMINATION 3RD QUARTER SFY 08

County	Children With Initial EPSDT Exam During Reporting Period		Children Without Initial EPSDT Exam During Reporting Period		Total Children in Out of Home Placement Greater Than 10 Days ²	Children with Initial EPSDT Within 30 Days	
	#	%	#	%	#	#	%
De Baca	0	0.0%	0	0.0%	.	0	0.0%
Region Total	25	36.8%	43	63.2%	68	20	29.4%
State Total	141	49.0%	147	51.0%	288	115	39.9%

1. EPSDT = Early and Periodic Screening, Diagnosis and Treatment Medicaid Medical Visits.

2. Report counts all children entering care during the parameter period and remaining in care more than 10 days.

Source: SM10a36

ADOPTION AND ADOLESCENT RESOURCE TEAM –3RD QUARTER SFY 08

	ADOPTION MEASURES NOT ACHIEVED	Total Cases	Not Achieved as % of Total Cases
De Baca	0	0	0.0%
Region Total	6	399	1.5%
State Total	49	3,382	1.4%

ADOPTION AND ADOLESCENT RESOURCE TEAM –3RD QUARTER SFY 08

	INDEPENDENT LIVING MEASURES NOT ACHIEVED	Total Cases	Not Achieved as % of Total Cases
De Baca	0	2	0.0%
Region Total	8	319	2.5%
State Total	25	1,234	2.0%

Source: JTS Database

Permanency Worker Case Weights SM0904 March 2008 Monthly Report

County	Number of Children in Custody as of 12/31/07	Number of Permanency Worker Positions as of 12/31/07	Number of Children per Permanency Worker as of 12/07
De Baca/Harding/Quay	50	1	50.0
Region Total	555	29	19.1
State Total	2,475	147.5	16.8

Source: March Monthly 2007 SM0904
FTE Position Responsible for Permanency Planning
Includes 110 Children w/No Plan

Investigation Worker Case Weight Report CY 2007

# of PS Investigation Worker Positions	Total # PS Accepted Reports 2007	Total # PS Completed Investigations 2006	Total # PS Completed Investigations 2007	% of Increase/Decrease in Investigations from CY06	Pending Investigation over 30 days 12/07	CY07 Avg Investigations Completed per Yr per worker	CY07 Avg Investigations Completed per Mo per worker
2.0	193	170	186	9.4%	3	93.0	7.8
25.0	2,684	3,040	2,709	-10.9%	73	108.4	9.0
132.5	15,424	16,116	16,005	-0.7%	1,065	120.8	10.1

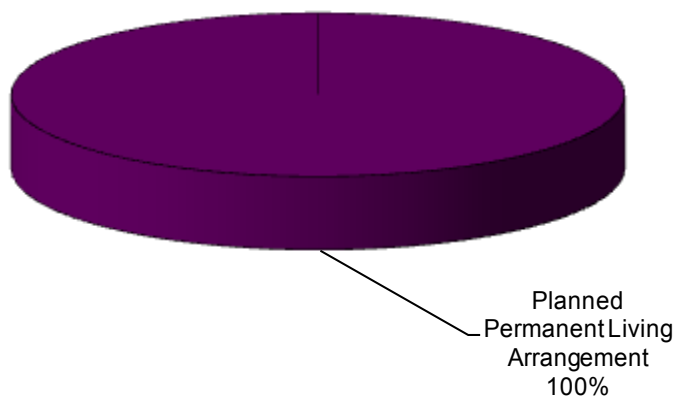
Source: SM01a02

DE BACA COUNTY (REGION 4/TOM CASSIDY COUNTY MANGER)

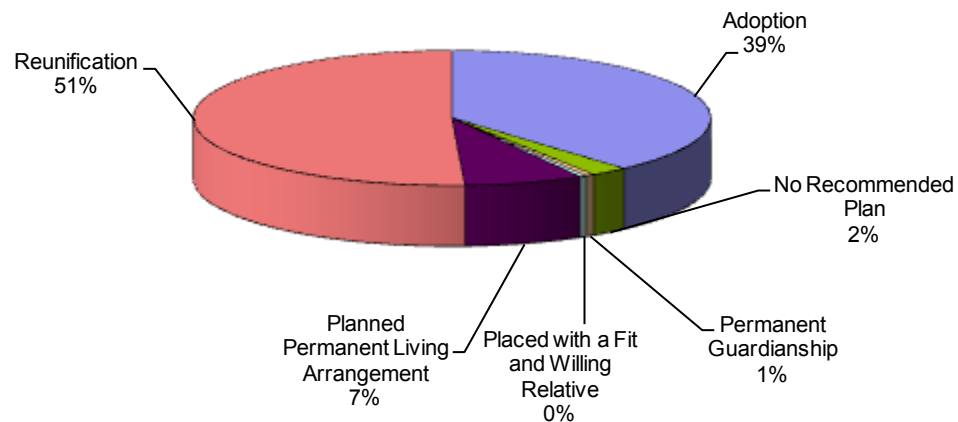
POINT IN TIME MEASURES: MARCH 31, 2008

County De Baca	Number	Region Total	State Total	% of State Total
NUMBER OF CHILDREN IN CARE (SM0907)	4	521	2,246	0.18%
• AVERAGE LENGTH OF STAY IN FOSTER CARE (IN MONTHS - END QTR) (SM0907)	23.1	18.4	20.1	0.00%
NUMBER OF FOSTER CARE PROVIDERS (PM02a01)	2	174	993	0.20%
NUMBER OF ADOPTION PROVIDERS (PM02a01)	2	188	1,496	0.13%
NUMBER OF CHILDREN WITH A PLAN OF ADOPTION (PM02a01)	0	103	895	0.00%
• NUMBER CHILDREN FREED AND WAITING (SM0907)	0	59	451	0.00%
• NUMBER OF CHILDREN FREED AND WAITING (WITH RESOURCES) (SM0803)	0	24	114	0.00%
• NUMBER OF CHILDREN FREED AND WAITING (WITHOUT RESOURCES) (SM0803)	0	63	337	0.00%
PERMANENT PLAN LIVING ARRANGEMENT (SM0904)	4	52	173	2.31%
WORKER VISITS WITH CHILDREN IN CARE (SM08-06)	Coming Soon			

Permanency Plan Goals of Children in Custody
De Baca County N = 4
Point In Time March 31, 2008
 Source: SM0904



Permanency Plan Goals of Children in Custody
New Mexico N = 2327
Point In Time March 31, 2008
 Source: SM0904



DE BACA COUNTY (REGION 4/TOM CASSIDY COUNTY MANGER)

RECURRENCE OF SUBSTANTIATED MALTREATMENT WITHIN 6 MONTHS OF A PREVIOUSLY SUBSTANTIATED REPORT OF MALTREATMENT

County De Baca	Total # of Maltreatment Victims	# With Recurrence	% With Recurrence
3rd Qtr SFY 08	0	0	0.0%
Region Total	316	17	5.4%
State Total	1,047	55	5.3%

Round 1 Federal National Standard = No more than 6.1%
New Mexico SFY 08 Standard = No more than 7.0%

Source: SM0907

CHILDREN REENTERING CARE WITHIN TWELVE MONTHS OF A PRIOR EPISODE

County De Baca	Total Entering Care #	# Reentering Within 12 Months	% Reentering Within 12 Months
3rd Qtr SFY 08	0	0	0.0%
Region Total	128	6	4.7%
State Total	534	43	8.1%

Round 1 Federal National Standard = No More than 8.6%
New Mexico SFY 08 Standard = No Standard

Source: SM0907

Note: SFY = State Fiscal Year. In New Mexico the State Fiscal year is July 1 through June 30 of the following year.

CHILDREN MALTREATED IN FOSTER CARE (PERFORMANCE OVER A ROLLING 12 MONTHS PERIOD)

County De Baca	Total # of Children in Care	# Maltreated	% of Maltreated in Foster Care
3rd Qtr SFY 08	3	0	0.00%
Region Total	992	8	0.81%
State Total	4,680	20	0.43%

Round 1 Federal National Standard = No more than 0.57%
New Mexico SFY08 State Standard = No more than 0.57%

Source: SM0907

CHILDREN REUNIFIED IN LESS THAN TWELVE MONTHS OF ENTRY INTO CARE

County De Baca	Total # Reunified	# Reunified less than 12 mos	% Reunified less than 12 mos
3rd Qtr SFY 08	0	0	0.0%
Region Total	93	70	75.3%
State Total	351	260	74.1%

Round 1 Federal National Standard = At or above 76.2%
New Mexico SFY 08 State Standard = At or above 85.0%

Source: SM0907

CHILDREN IN FOSTER CARE FOR UP TO 12 MONTHS WITH NO MORE THAN TWO PLACEMENT SETTING

County De Baca	Total	# With Two or Fewer	% With Two or Fewer
3rd Qtr SFY 08	0	0	0.00%
Region Total	357	251	70.31%
State Total	1,396	1,007	72.13%

Round 1 Federal National Standard = At or Above 86.7%
New Mexico SFY 08 Standard = At or Above 86.7%

Source: SM0907

CHILDREN WITH A FINALIZED ADOPTION WITHIN 24 MONTHS OF ENTRY INTO CARE

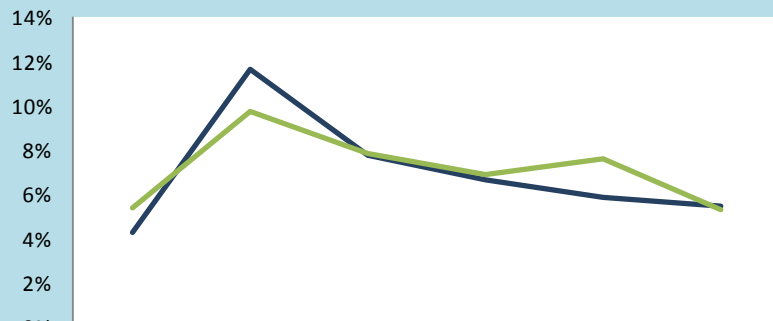
County De Baca	Total # Adopted	# <24 mos.	% <24 mos.
3rd Qtr SFY 08	0	0	0.0%
Region Total	31	12	38.7%
State Total	198	87	43.9%

Round 1 Federal National Standard = at least 32.0%
New Mexico SFY 08 Standard = At least 34.0%

Source: SM0907

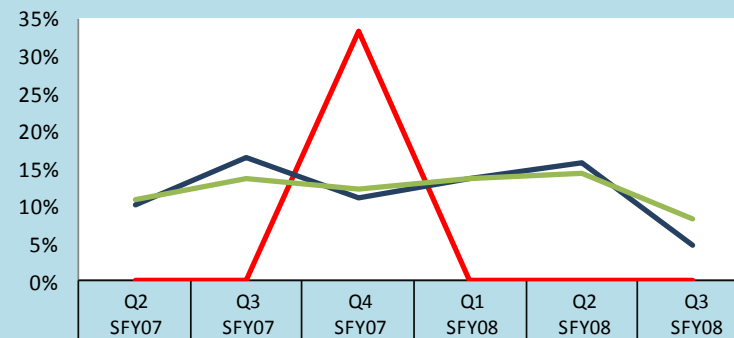
DE BACA COUNTY (REGION 4/TOM CASSIDY COUNTY MANGER)

Trends of Recurrence of Substantiated Maltreatment Within 6 Months of a Previously Substantiated Report of Maltreatment
ACF National Standard = 6.1%



	Q2 SFY07	Q3 SFY07	Q4 SFY07	Q1 SFY08	Q2 SFY08	Q3 SFY08
De Baca	0.0%	0.0%	0.0%	0.0%	0.0%	0.0%
Region Total	4.2%	11.6%	7.7%	6.6%	5.8%	5.4%
State Total	5.4%	9.7%	7.8%	6.9%	7.6%	5.3%

Trends of Children Reentering Care within Twelve Months of A Prior Episode
ACF National Standard = 8.6%



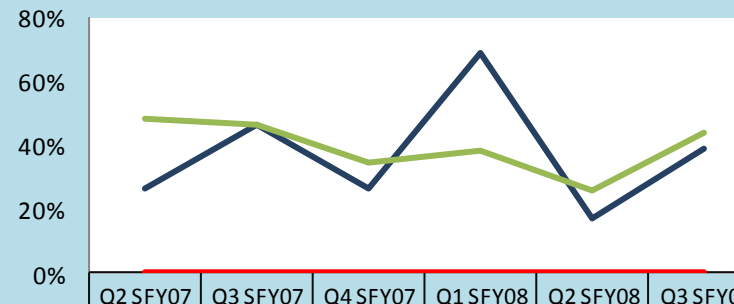
	Q2 SFY07	Q3 SFY07	Q4 SFY07	Q1 SFY08	Q2 SFY08	Q3 SFY08
De Baca	0.0%	0.0%	33.3%	0.0%	0.0%	0.0%
Region Total	10.1%	16.3%	10.9%	13.4%	15.5%	4.7%
State Total	10.6%	13.4%	12.1%	13.6%	14.2%	8.1%

Trends of Children Maltreated in Foster Care (performance over Rolling 12 Months)
ACF National Standard = 0.57%



	Yr Ending 12/31/06	Yr Ending 04/31/07	Yr Ending 06/30/07	Yr Ending 09/30/07	Yr Ending 12/31/07	Yr Ending 03/31/08
De Baca	0.00%	0.00%	0.00%	0.00%	0.00%	0.00%
Region Total	0.66%	0.74%	0.84%	0.38%	0.49%	0.81%
State Total	0.54%	0.76%	0.88%	0.55%	0.51%	0.43%

Trends of Children With a Finalized Adoption Within 24 Months of Entry Into Care
ACF National Standard = 32.0%



	Q2 SFY07	Q3 SFY07	Q4 SFY07	Q1 SFY08	Q2 SFY08	Q3 SFY08
De Baca	0.0%	0.0%	0.0%	0.0%	0.0%	0.0%
Region Total	26.7%	46.2%	26.7%	68.8%	17.1%	38.7%
State Total	48.2%	46.3%	34.4%	38.0%	25.7%	43.9%

Note: The reader should note that in the instance of existing children maltreated in Foster Care, cases are carried forward in the calculation for 12 rolling months. Thus trend data will display the existing cases for 12 consecutive months. For this reason elevated levels across multiple quarter may not indicate new cases for this measure.

EDDY COUNTY (SE REGION 4/VICKY COBB COUNTY MANGER)

According to the US Census in 2005, Eddy County attained an overall population of 51,658 or 2.78% of the state's total population. There were 14,901 children in the county in 2005; this represents 2.91% of the state's total children under 18. While the whole county accounts for **2.91%** of the state's total children under 18, Eddy County had **3.92%** of the state's total children in care as of March 31, 2008.

	Race and Ethnicity			
	Eddy ¹		Total Population ²	
	Children Under 19 yrs	Children Under 19 yrs of Hispanic Origin	Eddy	New Mexico
Total Population	14,781	7,573	51,658	1,854,938
White	94.1%	95.4%	76.3%	66.8%
Black	2.3%	1.9%	1.6%	1.9%
American Indian or Alaskan Native	1.4%	1.0%	1.3%	9.5%
Asian	0.2%	0.4%	0.4%	1.1%
Native Hawaiian or Other Pacific Islander	0.2%	0.4%	0.1%	0.1%
Some other Race	1.5%	1.0%	17.7%	17.0%
Hispanic or Latino			38.8%	42.1%
Under 18 yrs			14,907	511,768
% of Families Living under the poverty Level			13.6%	14.5%

1. Source: U.S. Census Bureau, Population Division\Bureau of Business and Economic Research, Univ. of New Mexico.
 2. Source: U.S. Census Bureau\State and County QuickFACTS

Children In Care End 03/31/08 Eddy County		
HISPANIC	No	Yes
Percentage	61.4%	38.6%
RACE		Total
Black or African American		5
Unable to Determine		2
White		81
Total		88

Source: SM0907



Age of Children in Care End 03/31/08											
County	< 1 yr		1 - 5 yrs		6 - 10 yrs		11 - 15 yrs		16 - 17 yrs		Total
	%	#	%	#	%	#	%	#	%	#	
Eddy	8%	7	47%	41	23%	20	13%	11	9%	8	88
Region Total	6.5%	34	36.9%	192	23.0%	120	20.1%	105	13.5%	70	521
State Total	5.7%	129	37.1%	832	25.3%	567	20.8%	467	11.3%	253	2,246

Source: SM0907

EDDY COUNTY (REGION 4/VICKY COBB COUNTY MANGER)

PROTECTIVE SERVICES REPORTS AND INVESTIGATIONS - QUARTER 3 SFY 08: JANUARY - MARCH 2008

County	Accepted Reports	Investigations							
		Substantiated		Unsubstantiated		Total Investigations	County % of State Total Investigations ¹	Number of Children Victims	Victim Rate ² per 1,000 children
Eddy	141	27	20.8%	103	79.2%	130	3.9%	40	10.7
Region Total	604	202	36.0%	359	64.0%	561	16.8%	316	17.7
State Total	3,521	842	25.1%	2,506	74.9%	3,348	100.0%	1,217	9.5

Note: Not all "accepted reports" result in investigations completed during the period under review.

- Both County and Regional data are calculated as a % of the State's total investigations for the period under review.
- For the quarterly *360 Degrees* County Profiles Report this information is calculated by annualizing the quarterly data. For the SFY Annual *360 Degrees* County Profiles Report this information is calculated, based on four quarters of reported data.

Source: SM01a02 and SM06a01

HOW ARE WE DOING?
By comparing "total investigations" for the quarter with "accepted reports" for the quarter, you can get a **sense** of work flow. To get a further sense of work flow, also review the cases with a "pending over 30 days" status and the case weight information for each county.

CPS ALLEGATION TYPES OF CHILD MALTREATMENT - QUARTER 3 SFY 08: JANUARY - MARCH 2008

Valencia	Physical Abuse				Sexual Abuse				Physical Neglect				Totals							
	Total	Substantiated	Unsubstantiated		Total	Substantiated	Unsubstantiated		Total	Substantiated	Unsubstantiated		Total	Substantiated	Unsubstantiated					
Eddy	88	11	12.5%	77	87.5%	11	2	18.2%	9	81.8%	225	40	17.8%	185	82.2%	324	53	16.4%	271	83.6%
Region Total	364	92	25.3%	272	74.7%	49	15	30.6%	34	69.4%	1,086	354	32.6%	732	67.4%	1,499	461	30.8%	1,038	69.2%
State Total	2,455	444	18.1%	2,011	81.9%	301	69	22.9%	232	77.1%	5,738	1433	25.0%	4,305	75.0%	8,494	1,946	22.9%	6,548	77.1%

Note: In every investigation there may be multiple allegations of maltreatment for one or more children. In counties with small populations, very small numbers in any category may render suspect any data collected during the period under review.

Source: SM06a01



PENDING INVESTIGATIONS: MARCH 2008

County	Reports Without An Investigation After 30 days		Pending Over 30 Days						Pending Less Than 30 Days		
	02/08	03/08	Baseline 11/04 Total	02/08 Total	03/08 Total	Priority Levels 03/08			Baseline 11/04 Total	02/08 Total	03/08 Total
						E	P1	P2			
Eddy	0	0	34	1	4	0	2	2	50	34	44
Region Total	0	0	426	109	97	9	19	69	228	178	201
State Total	8	5	4,917	1,092	1,172	122	225	825	1,296	1,079	1,112

Source: SM06a01

EDDY COUNTY (REGION 4/VICKY COBB COUNTY MANGER)

CHILDREN IN AN OUT OF HOME PLACEMENT FOR MORE THAN TEN DAYS WITH AN INITIAL EPSDT¹ EXAMINATION 3RD QUARTER SFY 08



County	Children With Initial EPSDT Exam During Reporting Period		Children Without Initial EPSDT Exam During Reporting Period		Total Children in Out of Home Placement Greater Than 10 Days ²	Children with Initial EPSDT Within 30 Days	
	#	%	#	%	#	#	%
Eddy	4	33.3%	8	66.7%	12	4	33.3%
Region Total	25	36.8%	43	63.2%	68	20	29.4%
State Total	141	49.0%	147	51.0%	288	115	39.9%

1. EPSDT = Early and Periodic Screening, Diagnosis and Treatment Medicaid Medical Visits.
2. Report counts all children entering care during the parameter period and remaining in care more than 10 days.

Source: SM10a36

ADOPTION AND ADOLESCENT RESOURCE TEAM –3RD QUARTER SFY 08

	ADOPTION MEASURES NOT ACHIEVED	Total Cases	Not Achieved as % of Total Cases
Eddy	0	110	0.0%
Region Total	6	399	1.5%
State Total	49	3,382	1.4%

ADOPTION AND ADOLESCENT RESOURCE TEAM –3RD QUARTER SFY 08

	INDEPENDENT LIVING MEASURES NOT ACHIEVED	Total Cases	Not Achieved as % of Total Cases
Eddy	1	70	1.4%
Region Total	8	319	2.5%
State Total	25	1,234	2.0%

Source: JTS Database

Permanency Worker Case Weights SM0904 March 2008 Monthly Report

County	Number of Children in Custody as of 12/31/07	Number of Permanency Worker Positions as of 12/31/07	Number of Children per Permanency Worker as of 12/07
Eddy	89	5	17.8
Region Total	555	29	19.1
State Total	2,475	147.5	16.8

Source: March Monthly 2007 SM0904
FTE Position Responsible for Permanency Planning
Includes 110 Children w/No Plan

Investigation Worker Case Weight Report CY 2007

# of PS Investigation Worker Positions	Total # PS Accepted Reports 2007	Total # PS Completed Investigations 2006	Total # PS Completed Investigations 2007	% of Increase/ Decrease in Investigations from CY06	Pending Investigation over 30 days 12/07	CY07 Avg Investigations Completed per Yr per worker	CY07 Avg Investigations Completed per Mo per worker
5.0	548	642	563	-12.3%	3	112.6	9.4
25.0	2,684	3,040	2,709	-10.9%	73	108.4	9.0
132.5	15,424	16,116	16,005	-0.7%	1,065	120.8	10.1

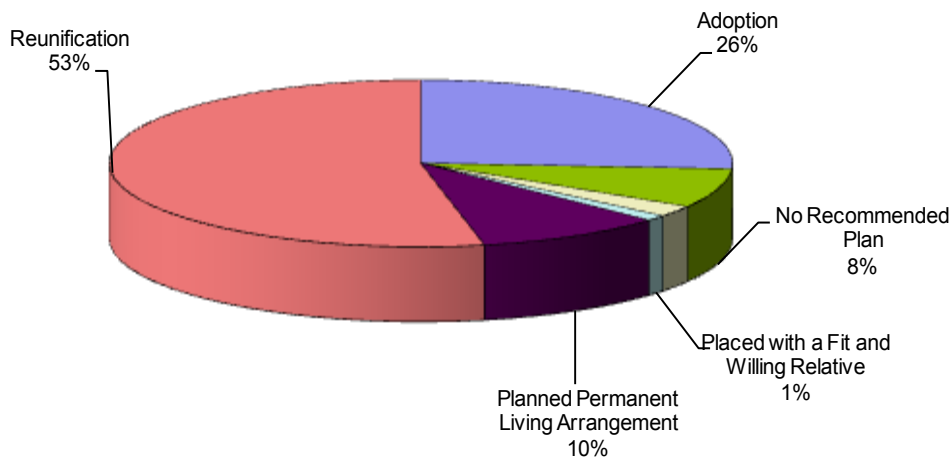
Source: SM01a02

EDDY COUNTY (REGION 4/VICKY COBB COUNTY MANGER)

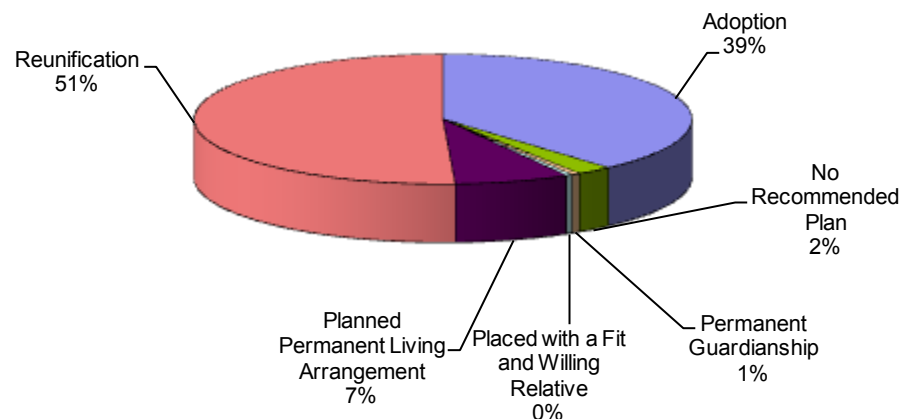
POINT IN TIME MEASURES: MARCH 31, 2008

County Eddy	Number	Region Total	State Total	% of State Total
NUMBER OF CHILDREN IN CARE (SM0907)	88	521	2,246	3.92%
• AVERAGE LENGTH OF STAY IN FOSTER CARE (IN MONTHS - END QTR) (SM0907)	17.3	18.4	20.1	
NUMBER OF FOSTER CARE PROVIDERS (PM02a01)	33	174	993	3.32%
NUMBER OF ADOPTION PROVIDERS (PM02a01)	45	188	1,496	3.01%
NUMBER OF CHILDREN WITH A PLAN OF ADOPTION (PM02a01)	24	148	895	2.68%
• NUMBER CHILDREN FREED AND WAITING (SM0907)	19	87	451	4.21%
• NUMBER OF CHILDREN FREED AND WAITING (WITH RESOURCES) (SM0803)	15	24	114	13.16%
• NUMBER OF CHILDREN FREED AND WAITING (WITHOUT RESOURCES) (SM0803)	4	63	337	1.19%
PERMANENT PLAN LIVING ARRANGEMENT (SM0904)	9	52	173	5.20%
WORKER VISITS WITH CHILDREN IN CARE (SM08-06)	Coming Soon			

Permanency Plan Goals of Children in Custody
Eddy County N = 92
Point In Time March 31, 2008
 Source: SM0904



Permanency Plan Goals of Children in Custody
New Mexico N = 2327
Point In Time March 31, 2008
 Source: SM0904



EDDY COUNTY (REGION 4/VICKY COBB COUNTY MANGER)

RECURRENCE OF SUBSTANTIATED MALTREATMENT WITHIN 6 MONTHS OF A PREVIOUSLY SUBSTANTIATED REPORT OF MALTREATMENT

County Eddy	Total # of Maltreatment Victims	# With Recurrence	% With Recurrence
3rd Qtr SFY 08	52	0	0.0%
Region Total	316	17	5.4%
State Total	1,047	55	5.3%

Round 1 Federal National Standard = No more than 6.1%
New Mexico SFY 08 Standard = No more than 7.0%

Source: SM0907

CHILDREN REENTERING CARE WITHIN TWELVE MONTHS OF A PRIOR EPISODE

County Eddy	Total Entering Care #	# Reentering Within 12 Months	% Reentering Within 12 Months
3rd Qtr SFY 08	18	1	5.6%
Region Total	128	6	4.7%
State Total	534	43	8.1%

Round 1 Federal National Standard = No More than 8.6%
New Mexico SFY 08 Standard = No Standard

Source: SM0907

Note: SFY = State Fiscal Year. In New Mexico the State Fiscal year is July 1 through June 30 of the following year.

CHILDREN MALTREATED IN FOSTER CARE (PERFORMANCE OVER A ROLLING 12 MONTHS PERIOD)

County Eddy	Total # of Children in Care	# Maltreated	% of Maltreated in Foster Care
3rd Qtr SFY 08	146	2	1.37%
Region Total	992	8	0.81%
State Total	4,680	20	0.43%

Round 1 Federal National Standard = No more than 0.57%
New Mexico SFY08 State Standard = No more than 0.57%

Source: SM0907

CHILDREN REUNIFIED IN LESS THAN TWELVE MONTHS OF ENTRY INTO CARE

County Eddy	Total # Reunified	# Reunified less than 12 mos	% Reunified less than 12 mos
3rd Qtr SFY 08	7	7	100.0%
Region Total	93	70	75.3%
State Total	351	260	74.1%

Round 1 Federal National Standard = At or above 76.2%
New Mexico SFY 08 State Standard = At or above 85.0%

Source: SM0907

CHILDREN IN FOSTER CARE FOR UP TO 12 MONTHS WITH NO MORE THAN TWO PLACEMENT SETTING

County Eddy	Total	# With Two or Fewer	% With Two or Fewer
3rd Qtr SFY 08	57	39	68.42%
Region Total	357	251	70.31%
State Total	1,396	1,007	72.13%

Round 1 Federal National Standard = At or Above 86.7%
New Mexico SFY 08 Standard = At or Above 86.7%

Source: SM0907

CHILDREN WITH A FINALIZED ADOPTION WITHIN 24 MONTHS OF ENTRY INTO CARE

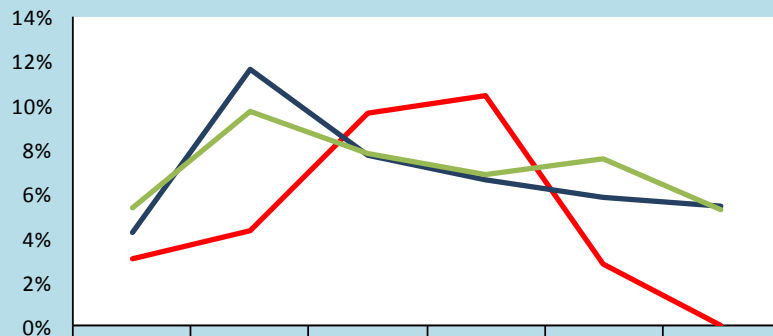
County Eddy	Total # Adopted	# <24 mos.	% <24 mos.
3rd Qtr SFY 08	9	2	22.2%
Region Total	31	12	38.7%
State Total	198	87	43.9%

Round 1 Federal National Standard = at least 32.0%
New Mexico SFY 08 Standard = At least 34.0%

Source: SM0907

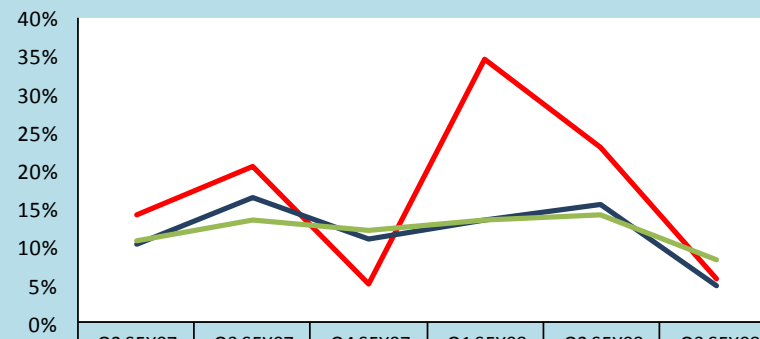
EDDY COUNTY (REGION 4/VICKY COBB COUNTY MANGER)

Trends of Recurrence of Substantiated Maltreatment Within 6 Months of a Previously Substantiated Report of Maltreatment
ACF National Standard = 6.1%



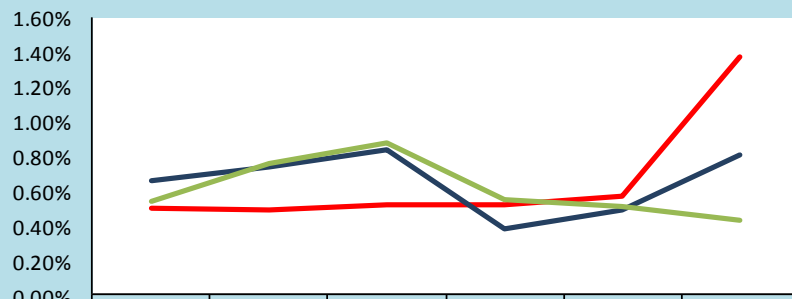
	Q2 SFY07	Q3 SFY07	Q4 SFY07	Q1 SFY08	Q2 SFY08	Q3 SFY08
Eddy	3.0%	4.3%	9.6%	10.4%	2.8%	0.0%
Region Total	4.2%	11.6%	7.7%	6.6%	5.8%	5.4%
State Total	5.4%	9.7%	7.8%	6.9%	7.6%	5.3%

Trends of Children Reentering Care within Twelve Months of a Prior Episode
ACF National Standard = 8.6%



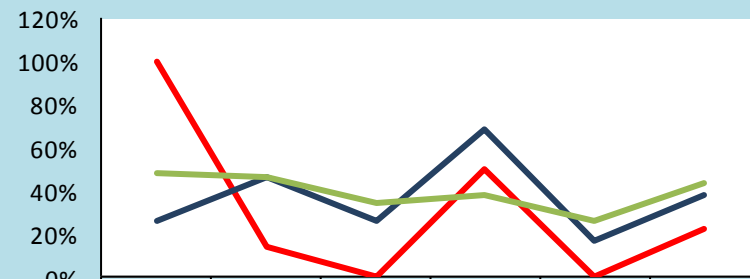
	Q2 SFY07	Q3 SFY07	Q4 SFY07	Q1 SFY08	Q2 SFY08	Q3 SFY08
Eddy	14.2%	20.5%	5.0%	34.6%	23.1%	5.6%
Region Total	10.1%	16.3%	10.9%	13.4%	15.5%	4.7%
State Total	10.6%	13.4%	12.1%	13.6%	14.2%	8.1%

Trends of Children Maltreated in Foster Care (performance over Rolling 12 Months)
ACF National Standard = 0.57%



	Yr Ending 12/31/06	Yr Ending 04/31/07	Yr Ending 06/30/07	Yr Ending 09/30/07	Yr Ending 12/31/07	Yr Ending 03/31/08
Eddy	0.50%	0.49%	0.52%	0.52%	0.57%	1.37%
Region Total	0.66%	0.74%	0.84%	0.38%	0.49%	0.81%
State Total	0.54%	0.76%	0.88%	0.55%	0.51%	0.43%

Trends of Children With a Finalized Adoption Within 24 Months of Entry Into Care
ACF National Standard = 32.0%



	Q2 SFY07	Q3 SFY07	Q4 SFY07	Q1 SFY08	Q2 SFY08	Q3 SFY08
Eddy	100.0%	14.3%	0.0%	50.0%	0.0%	22.2%
Region Total	26.7%	46.2%	26.7%	68.8%	17.1%	38.7%
State Total	48.2%	46.3%	34.4%	38.0%	25.7%	43.9%

Note: The reader should note that in the instance of existing children maltreated in Foster Care, cases are carried forward in the calculation for 12 rolling months. Thus trend data will display the existing cases for 12 consecutive months. For this reason elevated levels across multiple quarter may not indicate new cases for this measure.

HARDING COUNTY (SE REGION 4/TOM CASSIDY COUNTY MAN-

According to the US Census in 2005, De Baca County attained an overall population of 2,240 or 0.12% of the state's total population. There were 540 children in the county in 2005; this represents 0.11% of the state's total children under 18. While the whole county accounts for **0.11%** of the state's total children under 18, De Baca County had **0.0%** of the state's total children in care as of March 31, 2008.

	Race and Ethnicity			
	Harding ¹		Total Population ²	
	Children Under 19 yrs	Children Under 19 yrs of Hispanic Origin	Harding	New Mexico
Total Population	125	51	810	1,854,938
White	94.4%	92.2%	84.3%	66.8%
Black	1.6%	0.0%	0.4%	1.9%
American Indian or Alaskan Native	4.0%	7.8%	1.4%	9.5%
Asian	0.0%	0.0%	0.0%	1.1%
Native Hawaiian or Other Pacific Islander	0.0%	0.0%	0.0%	0.1%
Some other Race	0.0%	0.0%	10.6%	17.0%
Hispanic or Latino			44.9%	42.1%
Under 18 yrs			164	511,768
% of Families Living under the poverty Level			12.9%	14.5%

1. Source: U.S. Census Bureau, Population Division\Bureau of Business and Economic Research, Univ. of New Mexico.
 2. Source: U.S. Census Bureau\State and County QuickFACTS

Children In Care End 03/31/08 Harding County		
HISPANIC	No	Yes
Percentage	0.0%	0.0%
RACE	Total	%
	0	0.00%
Total		

Source: SM0907



Age of Children in Care End 03/31/08											
County	< 1 yr		1 - 5 yrs		6 - 10 yrs		11 - 15 yrs		16 - 17 yrs		Total
	%	#	%	#	%	#	%	#	%	#	
Harding	0%	0	0%	0	0%	0	0%	0	0%	0	0
Region Total	6.5%	34	36.9%	192	23.0%	120	20.1%	105	13.5%	70	521
State Total	5.7%	129	37.1%	832	25.3%	567	20.8%	467	11.3%	253	2,246

Source: SM0907

HARDING COUNTY (REGION 4/TOM CASSIDY COUNTY MANAGER)

PROTECTIVE SERVICES REPORTS AND INVESTIGATIONS - QUARTER 3 SFY 08: JANUARY - MARCH 2008

County	Accepted Reports	Investigations							
		Substantiated		Unsubstantiated		Total Investigations	County % of State Total Investigations ¹	Number of Children Victims	Victim Rate ² per 1,000 children
Harding	0	0	0.0%	0	0.0%	0	0.0%	0	0.0
Region Total	604	202	36.0%	359	64.0%	561	16.8%	316	17.7
State Total	3,521	842	25.1%	2,506	74.9%	3,348	100.0%	1,217	9.5

Note: Not all "accepted reports" result in investigations completed during the period under review.

- Both County and Regional data are calculated as a % of the State's total investigations for the period under review.
- For the quarterly *360 Degrees* County Profiles Report this information is calculated by annualizing the quarterly data. For the SFY Annual *360 Degrees* County Profiles Report this information is calculated, based on four quarters of reported data.

Source: SM01a02 and SM06a01

HOW ARE WE DOING?
By comparing "total investigations" for the quarter with "accepted reports" for the quarter, you can get a **sense** of work flow. To get a further sense of work flow, also review the cases with a "pending over 30 days" status and the case weight information for each county.

CPS ALLEGATION TYPES OF CHILD MALTREATMENT - QUARTER 3 SFY 08: JANUARY - MARCH 2008

County	Physical Abuse				Sexual Abuse				Physical Neglect				Totals			
	Total	Substantiated	Unsubstantiated	%	Total	Substantiated	Unsubstantiated	%	Total	Substantiated	Unsubstantiated	%	Total	Substantiated	Unsubstantiated	%
Harding	0	0	0.0%	0.0%	0	0	0.0%	0.0%	0	0	0.0%	0.0%	0	0	0.0%	0.0%
Region Total	364	92	25.3%	74.7%	49	15	30.6%	69.4%	1,086	354	32.6%	67.4%	1,499	461	30.8%	69.2%
State Total	2,455	444	18.1%	81.9%	301	69	22.9%	77.1%	5,738	1,433	25.0%	75.0%	8,494	1,946	22.9%	77.1%

Note: In every investigation there may be multiple allegations of maltreatment for one or more children. In counties with small populations, very small numbers in any category may render suspect any data collected during the period under review.

Source: SM06a01



PENDING INVESTIGATIONS: MARCH 2008

County	Reports Without An Investigation After 30 days		Pending Over 30 Days						Pending Less Than 30 Days		
	02/08	03/08	Baseline 11/04 Total	02/08 Total	03/08 Total	Priority Levels 03/08			Baseline 11/04 Total	02/08 Total	03/08 Total
						E	P1	P2			
Harding	0	0	1	7	0	0	0	0	0	1	0
Region Total	0	0	426	109	97	9	19	69	228	178	201
State Total	8	5	4,917	1,092	1,172	122	225	825	1,296	1,079	1,112

Source : SM06a01

HARDING COUNTY (REGION 4/TOM CASSIDY COUNTY MANAGER)

CHILDREN IN AN OUT OF HOME PLACEMENT FOR MORE THAN TEN DAYS WITH AN INITIAL EPSDT¹ EXAMINATION 3RD QUARTER SFY 08



County	Children With Initial EPSDT Exam During Reporting Period		Children Without Initial EPSDT Exam During Reporting Period		Total Children in Out of Home Placement Greater Than 10 Days ²	Children with Initial EPSDT Within 30 Days	
	#	%	#	%	#	#	%
Harding	0	0.0%	0	0.0%	0	0	0.0%
Region Total	25	36.8%	43	63.2%	68	20	29.4%
State Total	141	49.0%	147	51.0%	288	115	39.9%

1. EPSDT = Early and Periodic Screening, Diagnosis and Treatment Medicaid Medical Visits.
2. Report counts all children entering care during the parameter period and remaining in care more than 10 days.

Source: SM10a36

ADOPTION AND ADOLESCENT RESOURCE TEAM –3RD QUARTER SFY 08

	ADOPTION MEASURES NOT ACHIEVED	Total Cases	Not Achieved as % of Total Cases
Harding	0	0	0.0%
Region Total	6	399	1.5%
State Total	49	3,382	1.4%

ADOPTION AND ADOLESCENT RESOURCE TEAM –3RD QUARTER SFY 08

	INDEPENDENT LIVING MEASURES NOT ACHIEVED	Total Cases	Not Achieved as % of Total Cases
Harding	0	4	0.0%
Region Total	8	319	2.5%
State Total	25	1,234	2.0%

Source: JTS Database

Permanency Worker Case Weights SM0904 March 2008 Monthly Report

County	Number of Children in Custody as of 12/31/07	Number of Permanency Worker Positions as of 12/31/07	Number of Children per Permanency Worker as of 12/07
Harding/De Baca/Quay	50	1	50.0
Region Total	555	29	19.1
State Total	2,475	147.5	16.8

Source: March Monthly 2007 SM0904
FTE Position Responsible for Permanency Planning
Includes 110 Children w/No Plan

Investigation Worker Case Weight Report CY 2007

County	# of PS Investigation Worker Positions	Total # PS Accepted Reports 2007	Total # PS Completed Investigations 2006	Total # PS Completed Investigations 2007	% of Increase/Decrease in Investigations from CY06	Pending Investigation over 30 days 12/07	CY07 Avg Investigations Completed per Yr per worker	CY07 Avg Investigations Completed per Mo per worker
Harding/De Baca/Quay	2.0	193	170	186	9.4%	3	93.0	7.8
Region Total	25.0	2,684	3,040	2,709	-10.9%	73	108.4	9.0
State Total	132.5	15,424	16,116	16,005	-0.7%	1,065	120.8	10.1

Source: SM01a02

HARDING COUNTY (REGION 4/TOM CASSIDY COUNTY MANAGER)

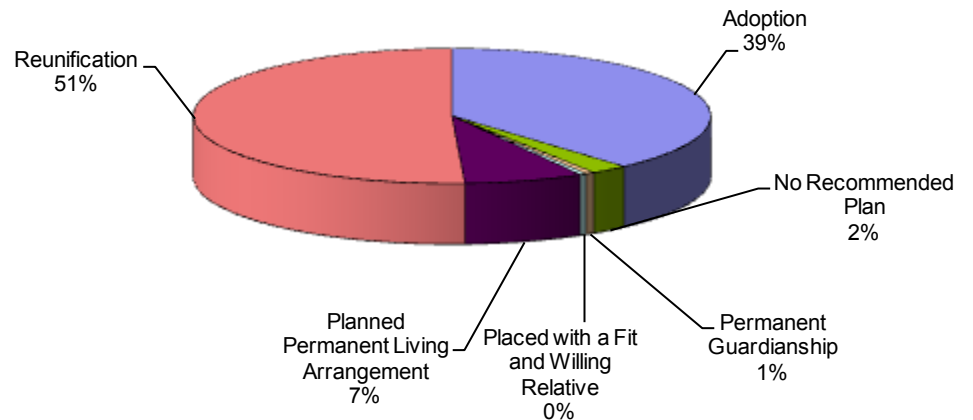
POINT IN TIME MEASURES: MARCH 31, 2008

County Harding	Number	Region Total	State Total	% of State Total
NUMBER OF CHILDREN IN CARE (SM0907)	0	521	2,246	0.00%
• AVERAGE LENGTH OF STAY IN FOSTER CARE (IN MONTHS - END QTR) (SM0907)	0.0	18.4	20.1	
NUMBER OF FOSTER CARE PROVIDERS (PM02a01)	0	174	993	0.00%
NUMBER OF ADOPTION PROVIDERS (PM02a01)	0	188	1,496	0.00%
NUMBER OF CHILDREN WITH A PLAN OF ADOPTION (PM02a01)	0	148	895	0.00%
• NUMBER CHILDREN FREED AND WAITING (SM0907)	0	87	451	0.00%
• NUMBER OF CHILDREN FREED AND WAITING (WITH RESOURCES) (SM0803)	0	24	114	0.00%
• NUMBER OF CHILDREN FREED AND WAITING (WITHOUT RESOURCES) (SM0803)	0	63	337	0.00%
PERMANENT PLAN LIVING ARRANGEMENT (SM0904)	0	52	173	0.00%
WORKER VISITS WITH CHILDREN IN CARE (SM08-06)	Coming Soon			

Permanency Plan Goals of Children in Custody
Harding County N = 0
Point In Time March 31, 2008
 Source: SM0904

Not Applicable

Permanency Plan Goals of Children in Custody
New Mexico N = 2327
Point In Time March 31, 2008
 Source: SM0904



HARDING COUNTY (REGION 4/TOM CASSIDY COUNTY MANAGER)

RECURRENCE OF SUBSTANTIATED MALTREATMENT WITHIN 6 MONTHS OF A PREVIOUSLY SUBSTANTIATED REPORT OF MALTREATMENT

County Harding	Total # of Maltreatment Victims	# With Recurrence	% With Recurrence
3rd Qtr SFY 08	0	0	0.0%
Region Total	316	17	5.4%
State Total	1,047	55	5.3%

Round 1 Federal National Standard = No more than 6.1%
New Mexico SFY 08 Standard = No more than 7.0%

Source: SM0907

CHILDREN REENTERING CARE WITHIN TWELVE MONTHS OF A PRIOR EPISODE

County Harding	Total Entering Care #	# Reentering Within 12 Months	% Reentering Within 12 Months
3rd Qtr SFY 08	0	0	0.0%
Region Total	128	6	4.7%
State Total	534	43	8.1%

Round 1 Federal National Standard = No More than 8.6%
New Mexico SFY 08 Standard = No Standard

Source: SM0907

Note: SFY = State Fiscal Year. In New Mexico the State Fiscal year is July 1 through June 30 of the following year.

CHILDREN MALTREATED IN FOSTER CARE (PERFORMANCE OVER A ROLLING 12 MONTHS PERIOD)

County Harding	Total # of Children in Care	# Maltreated	% of Maltreated in Foster Care
3rd Qtr SFY 08	0	0	0
Region Total	992	8	0.81%
State Total	4,680	20	0.43%

Round 1 Federal National Standard = No more than 0.57%
New Mexico SFY08 State Standard = No more than 0.57%

Source: SM0907

CHILDREN REUNIFIED IN LESS THAN TWELVE MONTHS OF ENTRY INTO CARE

County Harding	Total # Reunified	# Reunified less than 12 mos	% Reunified less than 12 mos
3rd Qtr SFY 08	0	0	0.0%
Region Total	93	70	75.3%
State Total	351	260	74.1%

Round 1 Federal National Standard = At or above 76.2%
New Mexico SFY 08 State Standard = At or above 85.0%

Source: SM0907

CHILDREN IN FOSTER CARE FOR UP TO 12 MONTHS WITH NO MORE THAN TWO PLACEMENT SETTING

County Harding	Total	# With Two or Fewer	% With Two or Fewer
3rd Qtr SFY 08	0	0	0.00%
Region Total	357	251	70.31%
State Total	1,396	1,007	72.13%

Round 1 Federal National Standard = At or Above 86.7%
New Mexico SFY 08 Standard = At or Above 86.7%

Source: SM0907

CHILDREN WITH A FINALIZED ADOPTION WITHIN 24 MONTHS OF ENTRY INTO CARE

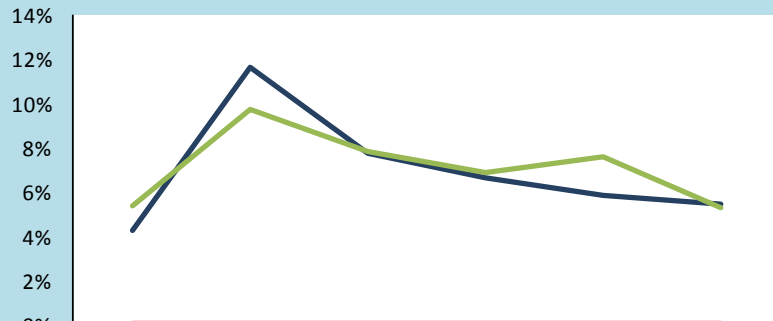
County Harding	Total # Adopted	# <24 mos.	% <24 mos.
3rd Qtr SFY 08	0	0	0.0%
Region Total	31	12	38.7%
State Total	198	87	43.9%

Round 1 Federal National Standard = at least 32.0%
New Mexico SFY 08 Standard = At least 34.0%

Source: SM0907

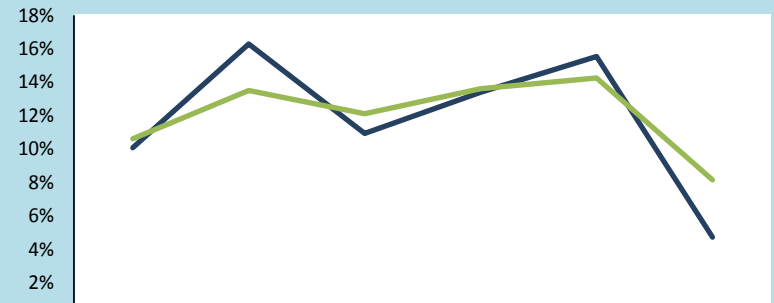
HARDING COUNTY (REGION 4/TOM CASSIDY COUNTY MANAGER)

Trends of Recurrence of Substantiated Maltreatment Within 6 Months of a Previously Substantiated Report of Maltreatment
ACF National Standard = 6.1%



	Q2 SFY07	Q3 SFY07	Q4 SFY07	Q1 SFY08	Q2 SFY08	Q3 SFY08
Harding	0.0%	0.0%	0.0%	0.0%	0.0%	0.0%
Region Total	4.2%	11.6%	7.7%	6.6%	5.8%	5.4%
State Total	5.4%	9.7%	7.8%	6.9%	7.6%	5.3%

Trends of Children Reentering Care within Twelve Months of a Prior Episode
ACF National Standard = 8.6%



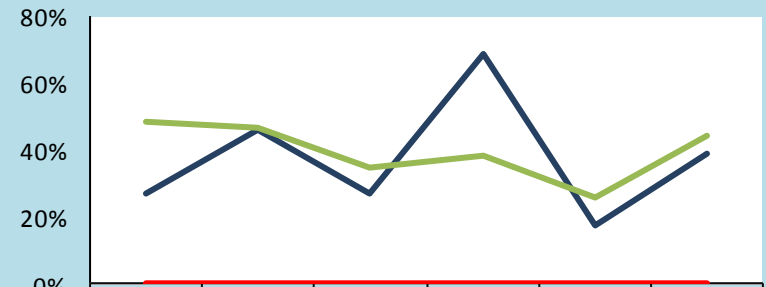
	Q2 SFY07	Q3 SFY07	Q4 SFY07	Q1 SFY08	Q2 SFY08	Q3 SFY08
Harding	0.0%	0.0%	0.0%	0.0%	0.0%	0.0%
Region Total	10.1%	16.3%	10.9%	13.4%	15.5%	4.7%
State Total	10.6%	13.4%	12.1%	13.6%	14.2%	8.1%

Trends of Children Maltreated in Foster Care (performance over Rolling 12 Months)
ACF National Standard = 0.57%



	Yr Ending 12/31/06	Yr Ending 04/31/07	Yr Ending 06/30/07	Yr Ending 09/30/07	Yr Ending 12/31/07	Yr Ending 03/31/08
Harding	0.00%	0.00%	0.00%	0.00%	0.00%	0.00%
Region Total	0.66%	0.74%	0.84%	0.38%	0.49%	0.81%
State Total	0.54%	0.76%	0.88%	0.55%	0.51%	0.43%

Trends of Children With a Finalized Adoption Within 24 Months of Entry Into Care
ACF National Standard = 32.0%



	Q2 SFY07	Q3 SFY07	Q4 SFY07	Q1 SFY08	Q2 SFY08	Q3 SFY08
Harding	0.0%	0.0%	0.0%	0.0%	0.0%	0.0%
Region Total	26.7%	46.2%	26.7%	68.8%	17.1%	38.7%
State Total	48.2%	46.3%	34.4%	38.0%	25.7%	43.9%

Note: The reader should note that in the instance of existing children maltreated in Foster Care, cases are carried forward in the calculation for 12 rolling months. Thus trend data will display the existing cases for 12 consecutive months. For this reason elevated levels across multiple quarter may not indicate new cases for this measure.

LEA COUNTY (SE REGION 4/CORY MCCARRELL COUNTY MANAGER)

According to the US Census in 2005, Lea County attained an overall population of 55,511 or 2.99% of the state's total population. There were 16,687 children in the county in 2005; this represents 3.26% of the state's total children under 18. While the whole county accounts for **3.26%** of the state's total children under 18, Lea County had **4.32%** of the state's total children in care as of March 31, 2008.

	Race and Ethnicity			
	Lea ¹		Total Population ²	
	Children Under 19 yrs	Children Under 19 yrs of Hispanic Origin	Lea	New Mexico
Total Population	17,604	9,942	55,511	1,854,938
White	91.6%	96.0%	67.1%	66.8%
Black	5.2%	1.7%	4.4%	1.9%
American Indian or Alaskan Native	0.9%	0.8%	1.0%	9.5%
Asian	0.1%	0.2%	0.4%	1.1%
Native Hawaiian or Other Pacific Islander	0.1%	0.2%	0.0%	0.1%
Some other Race	1.7%	1.0%	23.8%	17.0%
Hispanic or Latino			39.6%	42.1%
Under 18 yrs			16,687	511,768
% of Families Living under the poverty Level			17.3%	14.5%

1. Source: U.S. Census Bureau, Population Division\Bureau of Business and Economic Research, Univ. of New Mexico.
2. Source: U.S. Census Bureau\State and County QuickFACTS

Children In Care End 03/31/08 Lea County		
HISPANIC	No	Yes
Percentage	56.7%	43.3%
RACE		Total
American Indian or Alaskan Native		1
Black or African American		17
Unable to Determine		2
White		77
Total		97

Source: SM0907



County	Age of Children in Care End 03/31/08										
	< 1 yr		1 - 5 yrs		6 - 10 yrs		11 - 15 yrs		16 - 17 yrs		Total
	%	#	%	#	%	#	%	#	%	#	
Lea	5%	5	34%	33	21%	20	25%	24	15%	15	97
Region Total	6.5%	34	36.9%	192	23.0%	120	20.1%	105	13.5%	70	521
State Total	5.7%	129	37.1%	832	25.3%	567	20.8%	467	11.3%	253	2,246

Source: SM0907

LEA COUNTY (REGION 4/CORY MCCARRELL COUNTY MANAGER)

PROTECTIVE SERVICES REPORTS AND INVESTIGATIONS - QUARTER 3 SFY 08: JANUARY - MARCH 2008

County	Accepted Reports	Investigations							
		Substantiated		Unsubstantiated		Total Investigations	County % of State Total Investigations ¹	Number of Children Victims	Victim Rate ² per 1,000 children
Lea	121	40	33.1%	81	66.9%	121	3.6%	60	14.4
Region Total	604	202	36.0%	359	64.0%	561	16.8%	316	17.7
State Total	3,521	842	25.1%	2,506	74.9%	3,348	100.0%	1,217	9.5

Note: Not all "accepted reports" result in investigations completed during the period under review.

- Both County and Regional data are calculated as a % of the State's total investigations for the period under review.
- For the quarterly *360 Degrees* County Profiles Report this information is calculated by annualizing the quarterly data. For the SFY Annual *360 Degrees* County Profiles Report this information is calculated, based on four quarters of reported data.

Source: SM01a02 and SM06a01

HOW ARE WE DOING?
By comparing "total investigations" for the quarter with "accepted reports" for the quarter, you can get a **sense** of work flow. To get a further sense of work flow, also review the cases with a "pending over 30 days" status and the case weight information for each county.

CPS ALLEGATION TYPES OF CHILD MALTREATMENT - QUARTER 3 SFY 08: JANUARY - MARCH 2008

County	Physical Abuse				Sexual Abuse				Physical Neglect				Totals							
	Total	Substantiated	Unsubstantiated	%	Total	Substantiated	Unsubstantiated	%	Total	Substantiated	Unsubstantiated	%	Total	Substantiated	Unsubstantiated	%				
Lea	83	19	22.9%	64	77.1%	10	4	40.0%	6	60.0%	263	78	29.7%	185	70.3%	356	101	28.4%	255	71.6%
Region Total	364	92	25.3%	272	74.7%	49	15	30.6%	34	69.4%	1,086	354	32.6%	732	67.4%	1,499	461	30.8%	1,038	69.2%
State Total	2,455	444	18.1%	2,011	81.9%	301	69	22.9%	232	77.1%	5,738	1433	25.0%	4,305	75.0%	8,494	1,946	22.9%	6,548	77.1%

Note: In every investigation there may be multiple allegations of maltreatment for one or more children. In counties with small populations, very small numbers in any category may render suspect any data collected during the period under review.

Source: SM06a01



PENDING INVESTIGATIONS: MARCH 2008

County	Reports Without An Investigation After 30 days		Pending Over 30 Days						Pending Less Than 30 Days		
	02/08	03/08	Baseline 11/04 Total	02/08 03/08		Priority Levels 03/08			Baseline 11/04 Total	02/08 Total	03/08 Total
				Total	Total	E	P1	P2			
Lea	0	0	115	61	39	3	8	28	52	36	44
Region Total	0	0	426	109	97	9	19	69	228	178	201
State Total	8	5	4,917	1,092	1,172	122	225	825	1,296	1,079	1,112

Source : SM06a01

LEA COUNTY (REGION 4/CORY MCCARRELL COUNTY MANAGER)

CHILDREN IN AN OUT OF HOME PLACEMENT FOR MORE THAN TEN DAYS WITH AN INITIAL EPSDT¹ EXAMINATION 3RD QUARTER SFY 08



County	Children With Initial EPSDT Exam During Reporting Period		Children Without Initial EPSDT Exam During Reporting Period		Total Children in Out of Home Placement Greater Than 10 Days ²	Children with Initial EPSDT Within 30 Days	
	#	%	#	%	#	#	%
Lea	3	15.8%	16	84.2%	19	1	5.3%
Region Total	25	36.8%	43	63.2%	68	20	29.4%
State Total	141	49.0%	147	51.0%	288	115	39.9%

1. EPSDT = Early and Periodic Screening, Diagnosis and Treatment Medicaid Medical Visits.

2. Report counts all children entering care during the parameter period and remaining in care more than 10 days.

Source: SM10a36

ADOPTION AND ADOLESCENT RESOURCE TEAM –3RD QUARTER SFY 08

	ADOPTION MEASURES NOT ACHIEVED	Total Cases	Not Achieved as % of Total Cases
Lea	0	63	0.0%
Region Total	6	399	1.5%
State Total	49	3,382	1.4%

ADOPTION AND ADOLESCENT RESOURCE TEAM –3RD QUARTER SFY 08

	INDEPENDENT LIVING MEASURES NOT ACHIEVED	Total Cases	Not Achieved as % of Total Cases
Lea	4	57	7.0%
Region Total	8	319	2.5%
State Total	25	1,234	2.0%

Source: JTS Database

Permanency Worker Case Weights SM0904 March 2008 Monthly Report

County	Number of Children in Custody as of 12/31/07	Number of Permanency Worker Positions as of 12/31/07	Number of Children per Permanency Worker as of 12/07
Lea	101	6	16.8
Region Total	555	29	19.1
State Total	2,475	147.5	16.8

Source: March Monthly 2007 SM0904

FTE Position Responsible for Permanency Planning
Includes 110 Children w/No Plan

Investigation Worker Case Weight Report CY 2007

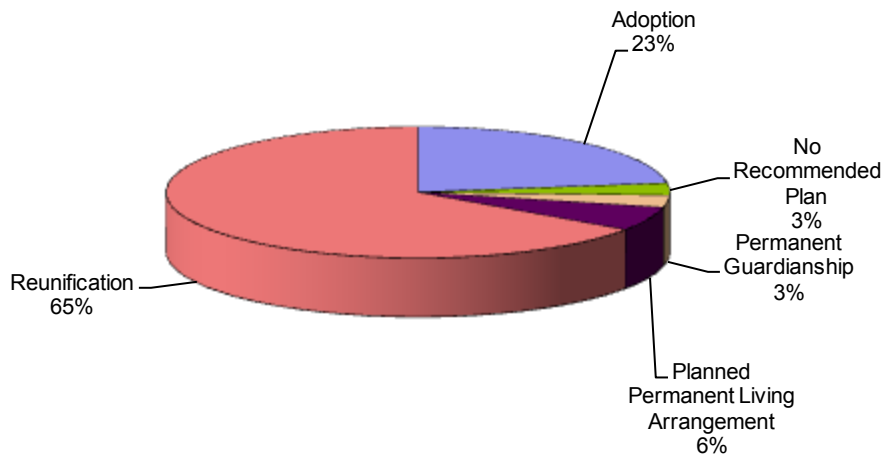
# of PS Investigation Worker Positions	Total # PS Accepted Reports 2007	Total # PS Completed Investigations 2006	Total # PS Completed Investigations 2007	% of Increase/Decrease in Investigations from CY06	Pending Investigation over 30 days 12/07	CY07 Avg Investigations Completed per Yr per worker	CY07 Avg Investigations Completed per Mo per worker
5.0	580	637	615	-3.5%	39	123.0	10.3
25.0	2,684	3,040	2,709	-10.9%	73	108.4	9.0
132.5	15,424	16,116	16,005	-0.7%	1,065	120.8	10.1

Source: SM01a02

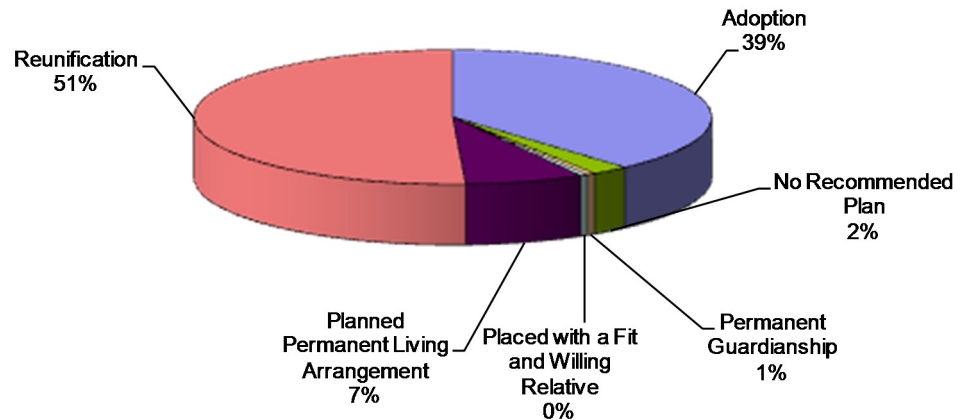
POINT IN TIME MEASURES: MARCH 31, 2008

County Lea	Number	Region Total	State Total	% of State Total
NUMBER OF CHILDREN IN CARE (SM0907)	97	521	2,246	4.32%
• AVERAGE LENGTH OF STAY IN FOSTER CARE (IN MONTHS - END QTR) (SM0907)	18.8	18.4	20.1	
NUMBER OF FOSTER CARE PROVIDERS (PM02a01)	34	174	993	3.42%
NUMBER OF ADOPTION PROVIDERS (PM02a01)	37	188	1,496	2.47%
NUMBER OF CHILDREN WITH A PLAN OF ADOPTION (PM02a01)	23	148	895	2.57%
• NUMBER CHILDREN FREED AND WAITING (SM0907)	19	87	451	4.21%
• NUMBER OF CHILDREN FREED AND WAITING (WITH RESOURCES) (SM0803)	2	24	114	1.75%
• NUMBER OF CHILDREN FREED AND WAITING (WITHOUT RESOURCES) (SM0803)	17	63	337	5.04%
PERMANENT PLAN LIVING ARRANGEMENT (SM0904)	6	52	173	3.47%
WORKER VISITS WITH CHILDREN IN CARE (SM08-06)	Coming Soon			

**Permanency Plan Goals of Children in Custody
Lea County N = 101
Point In March 31, 2008**
Source: SM0904



**Permanency Plan Goals of Children in Custody
New Mexico N = 2327
Point In Time March 31, 2008**
Source: SM0904



LEA COUNTY (REGION 4/CORY MCCARRELL COUNTY MANAGER)

RECURRENCE OF SUBSTANTIATED MALTREATMENT WITHIN 6 MONTHS OF A PREVIOUSLY SUBSTANTIATED REPORT OF MALTREATMENT

County Lea	Total # of Maltreatment Victims	# With Recurrence	% With Recurrence
3rd Qtr SFY 08	56	0	0.0%
Region Total	316	17	5.4%
State Total	1,047	55	5.3%

Round 1 Federal National Standard = No more than 6.1%
New Mexico SFY 08 Standard = No more than 7.0%

Source: SM0907

CHILDREN REENTERING CARE WITHIN TWELVE MONTHS OF A PRIOR EPISODE

County Lea	Total Entering Care #	# Reentering Within 12 Months	% Reentering Within 12 Months
3rd Qtr SFY 08	21	1	4.8%
Region Total	128	6	4.7%
State Total	534	43	8.1%

Round 1 Federal National Standard = No More than 8.6%
New Mexico SFY 08 Standard = No Standard

Source: SM0907

Note: SFY = State Fiscal Year. In New Mexico the State Fiscal year is July 1 through June 30 of the following year.

CHILDREN MALTREATED IN FOSTER CARE (PERFORMANCE OVER A ROLLING 12 MONTHS PERIOD)

County Lea	Total # of Chil- dren in Care	# Maltreated	% of Maltreated in Foster Care
3rd Qtr SFY 08	157	0	0.00%
Region Total	992	8	0.81%
State Total	4,680	20	0.43%

Round 1 Federal National Standard = No more than 0.57%
New Mexico SFY08 State Standard = No more than 0.57%

Source: SM0907

CHILDREN REUNIFIED IN LESS THAN TWELVE MONTHS OF ENTRY INTO CARE

County Lea	Total # Reunified	# Reunified less than 12 mos	% Reunified less than 12 mos
3rd Qtr SFY 08	11	6	54.5%
Region Total	93	70	75.3%
State Total	351	260	74.1%

Round 1 Federal National Standard = At or above 76.2%
New Mexico SFY 08 State Standard = At or above 85.0%

Source: SM0907

CHILDREN IN FOSTER CARE FOR UP TO 12 MONTHS WITH NO MORE THAN TWO PLACEMENT SETTING

County Lea	Total	# With Two or Fewer	% With Two or Fewer
3rd Qtr SFY 08	64	52	81.25%
Region Total	357	251	70.31%
State Total	1,396	1,007	72.13%

Round 1 Federal National Standard = At or Above 86.7%
New Mexico SFY 08 Standard = At or Above 86.7%

Source: SM0907

CHILDREN WITH A FINALIZED ADOPTION WITHIN 24 MONTHS OF ENTRY INTO CARE

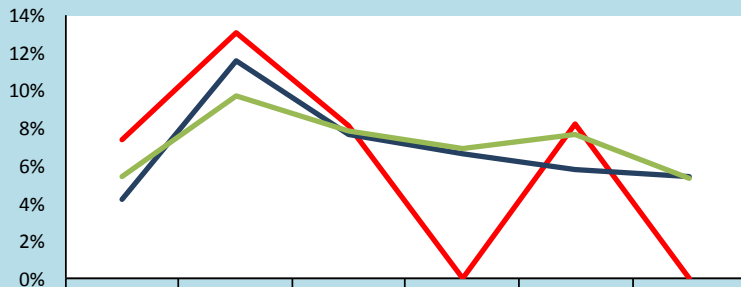
County Lea	Total # Adopted	# <24 mos.	%<24 mos.
3rd Qtr SFY 08	1	0	0.0%
Region Total	31	12	38.7%
State Total	198	87	43.9%

Round 1 Federal National Standard = at least 32.0%
New Mexico SFY 08 Standard = At least 34.0%

Source: SM0907

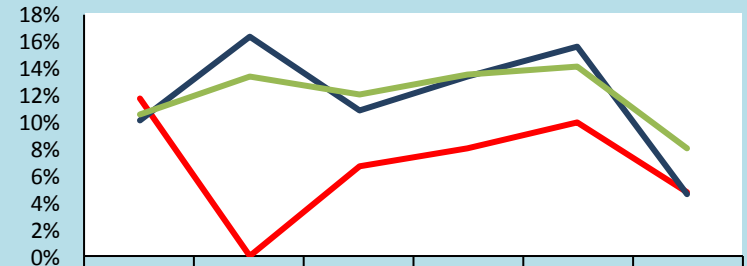
LEA COUNTY (REGION 4/CORY MCCARRELL COUNTY MANAGER)

Trends of Recurrence of Substantiated Maltreatment Within 6 Months of a Previously Substantiated Report of Maltreatment
ACF National Standard = 6.1%



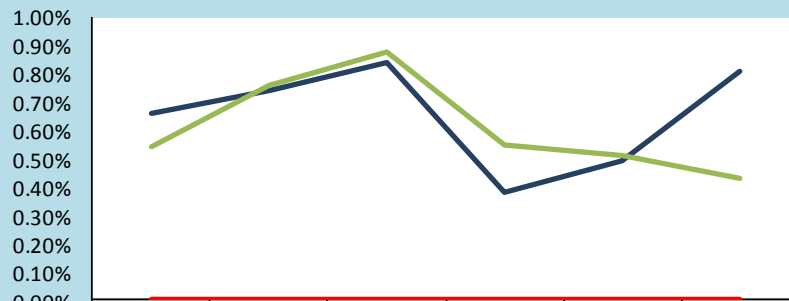
	Q2 SFY07	Q3 SFY07	Q4 SFY07	Q1 SFY08	Q2 SFY08	Q3 SFY08
Lea	7.4%	13.1%	8.1%	0.0%	8.2%	0.0%
Region Total	4.2%	11.6%	7.7%	6.6%	5.8%	5.4%
State Total	5.4%	9.7%	7.8%	6.9%	7.6%	5.3%

Trends of Children Reentering Care within Twelve Months of a Prior Episode
ACF National Standard = 8.6%



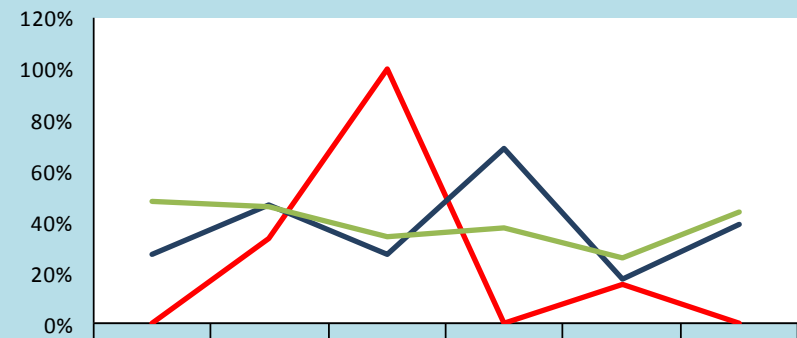
	Q2 SFY07	Q3 SFY07	Q4 SFY07	Q1 SFY08	Q2 SFY08	Q3 SFY08
Lea	11.8%	0.0%	6.7%	8.0%	10.0%	4.8%
Region Total	10.1%	16.3%	10.9%	13.4%	15.5%	4.7%
State Total	10.6%	13.4%	12.1%	13.6%	14.2%	8.1%

Trends of Children Maltreated in Foster Care (performance over Rolling 12 Months)
ACF National Standard = 0.57%



	Yr Ending 12/31/06	Yr Ending 04/31/07	Yr Ending 06/30/07	Yr Ending 09/30/07	Yr Ending 12/31/07	Yr Ending 03/31/08
Lea	0.00%	0.00%	0.00%	0.00%	0.00%	0.00%
Region Total	0.66%	0.74%	0.84%	0.38%	0.49%	0.81%
State Total	0.54%	0.76%	0.88%	0.55%	0.51%	0.43%

Trends of Children With a Finalized Adoption Within 24 Months of Entry Into Care
ACF National Standard = 32.0%



	Q2 SFY07	Q3 SFY07	Q4 SFY07	Q1 SFY08	Q2 SFY08	Q3 SFY08
Lea	0.0%	33.3%	100.0%	0.0%	15.4%	0.0%
Region Total	26.7%	46.2%	26.7%	68.8%	17.1%	38.7%
State Total	48.2%	46.3%	34.4%	38.0%	25.7%	43.9%

Note: The reader should note that in the instance of existing children maltreated in Foster Care, cases are carried forward in the calculation for 12 rolling months. Thus trend data will display the existing cases for 12 consecutive months. For this reason elevated levels across multiple quarter may not indicate new cases for this measure.

QUAY COUNTY (SE REGION 4/TOM CASSIDY COUNTY MANGER)

According to the US Census in 2005, Quay County attained an overall population of 10,155 or 0.55% of the state's total population. There were 2,541 children in the county in 2005; this represents 0.50% of the state's total children under 18. While the whole county accounts for **0.50%** of the state's total children under 18, Quay County had **1.87%** of the state's total children in care as of March 31, 2008.

	Race and Ethnicity			
	Quay ¹		Total Population ²	
	Children Under 19 yrs	Children Under 19 yrs of Hispanic Origin	Quay	New Mexico
Total Population	2,205	1,049	10,155	1,854,938
White	95.1%	97.3%	82.1%	66.8%
Black	1.4%	0.5%	0.8%	1.9%
American Indian or Alaskan Native	1.7%	1.2%	1.3%	9.5%
Asian	0.3%	0.4%	0.8%	1.1%
Native Hawaiian or Other Pacific Islander	0.3%	0.4%	0.1%	0.1%
Some other Race	0.2%	0.1%	12.1%	17.0%
Hispanic or Latino			38.0%	42.1%
Under 18 yrs			2,541	511,768
% of Families Living under the poverty Level			15.7%	14.5%

1. Source: U.S. Census Bureau, Population Division\Bureau of Business and Economic Research, Univ. of New Mexico.
 2. Source: U.S. Census Bureau\State and County QuickFACTS

Children In Care End 03/31/08 Quay County		
HISPANIC	No	Yes
Percentage	47.6%	52.4%
RACE		%
Black or African American		2.4%
White		97.6%
Total		42

Source: SM0907



Age of Children in Care End 03/31/08											
County	< 1 yr		1 - 5 yrs		6 - 10 yrs		11 - 15 yrs		16 - 17 yrs		Total
	%	#	%	#	%	#	%	#	%	#	
Quay	4%	2	29%	12	22%	9	24%	10	20%	8	42
Region Total	6.5%	34	36.9%	192	23.0%	120	20.1%	105	13.5%	70	521
State Total	5.7%	129	37.1%	832	25.3%	567	20.8%	467	11.3%	253	2,246

Source: SM0907

QUAY COUNTY (REGION 4/TOM CASSIDY COUNTY MANGER)

PROTECTIVE SERVICES REPORTS AND INVESTIGATIONS - QUARTER 3 SFY 08: JANUARY - MARCH 2008

County	Accepted Reports	Investigations							
		Substantiated	Unsubstantiated	Total Investigations	County % of State Total Investigations ¹	Number of Children Victims	Victim Rate ² per 1,000 children		
Quay	30	13	40.6%	19	59.4%	32	1.0%	20	31.5
Region Total	604	202	36.0%	359	64.0%	561	16.8%	316	17.7
State Total	3,521	842	25.1%	2,506	74.9%	3,348	100.0%	1,217	9.5

Note: Not all "accepted reports" result in investigations completed during the period under review.

- Both County and Regional data are calculated as a % of the State's total investigations for the period under review.
- For the quarterly *360 Degrees* County Profiles Report this information is calculated by annualizing the quarterly data. For the SFY Annual *360 Degrees* County Profiles Report this information is calculated, based on four quarters of reported data.

Source: SM01a02 and SM06a01

HOW ARE WE DOING?
By comparing "total investigations" for the quarter with "accepted reports" for the quarter, you can get a **sense** of work flow. To get a further sense of work flow, also review the cases with a "pending over 30 days" status and the case weight information for each county.

CPS ALLEGATION TYPES OF CHILD MALTREATMENT - QUARTER 3 SFY 08: JANUARY - MARCH 2008

County	Physical Abuse				Sexual Abuse				Physical Neglect				Totals							
	Total	Substantiated	Unsubstantiated	%	Total	Substantiated	Unsubstantiated	%	Total	Substantiated	Unsubstantiated	%	Total	Substantiated	Unsubstantiated	%				
Quay	20	13	65.0%	7	35.0%	3	0	0.0%	3	100.0%	45	12	26.7%	33	73.3%	68	25	36.8%	43	63.2%
Region Total	364	92	25.3%	272	74.7%	49	15	30.6%	34	69.4%	1,086	354	32.6%	732	67.4%	1,499	461	30.8%	1,038	69.2%
State Total	2,455	444	18.1%	2,011	81.9%	301	69	22.9%	232	77.1%	5,738	1433	25.0%	4,305	75.0%	8,494	1,946	22.9%	6,548	77.1%

Note: In every investigation there may be multiple allegations of maltreatment for one or more children. In counties with small populations, very small numbers in any category may render suspect any data collected during the period under review.

Source: SM06a01



PENDING INVESTIGATIONS: MARCH 2008

County	Reports Without An Investigation After 30 days		Pending Over 30 Days						Pending Less Than 30 Days		
	02/08	03/08	Baseline 11/04 Total	02/08 03/08		Priority Levels 03/08			Baseline 11/04 Total	02/08 Total	03/08 Total
				Total	Total	E	P1	P2			
Quay	0	0	2	2	8	0	1	7	9	17	11
Region Total	0	0	426	109	97	9	19	69	228	178	201
State Total	8	5	4,917	1,092	1,172	122	225	825	1,296	1,079	1,112

Source : SM06a01

QUAY COUNTY (REGION 4/TOM CASSIDY COUNTY MANGER)



CHILDREN IN AN OUT OF HOME PLACEMENT FOR MORE THAN TEN DAYS WITH AN INITIAL EPSDT¹ EXAMINATION 3RD QUARTER SFY 08

County	Children With Initial EPSDT Exam During Reporting Period		Children Without Initial EPSDT Exam During Reporting Period		Total Children in Out of Home Placement Greater Than 10 Days ²	Children with Initial EPSDT Within 30 Days	
	#	%	#	%	#	#	%
Quay	0	0.0%	1	100.0%	1	0	0.0%
Region Total	25	36.8%	43	63.2%	68	20	29.4%
State Total	141	49.0%	147	51.0%	288	115	39.9%

1. EPSDT = Early and Periodic Screening, Diagnosis and Treatment Medicaid Medical Visits.

2. Report counts all children entering care during the parameter period and remaining in care more than 10 days.

Source: SM10a36

ADOPTION AND ADOLESCENT RESOURCE TEAM –3RD QUARTER SFY 08

	ADOPTION MEASURES NOT ACHIEVED	Total Cases	Not Achieved as % of Total Cases
Quay	3	36	8.3%
Region Total	6	399	1.5%
State Total	49	3,382	1.4%

ADOPTION AND ADOLESCENT RESOURCE TEAM –3RD QUARTER SFY 08

	INDEPENDENT LIVING MEASURES NOT ACHIEVED	Total Cases	Not Achieved as % of Total Cases
Quay	0	25	0.0%
Region Total	8	319	2.5%
State Total	25	1,234	2.0%

Source: JTS Database

Permanency Worker Case Weights SM0904 March 2008 Monthly Report

County	Number of Children in Custody as of 12/31/07	Number of Permanency Worker Positions as of 12/31/07	Number of Children per Permanency Worker as of 12/07
Quay/De Baca/Harding	50	1	50.0
Region Total	555	29	19.1
State Total	2,475	147.5	16.8

Source: March Monthly 2007 SM0904
FTE Position Responsible for Permanency Planning
Includes 110 Children w/No Plan

Investigation Worker Case Weight Report CY 2007

# of PS Investigation Worker Positions	Total # PS Accepted Reports 2007	Total # PS Completed Investigations 2006	Total # PS Completed Investigations 2007	% of Increase/Decrease in Investigations from CY06	Pending Investigation over 30 days 12/07	CY07 Avg Investigations Completed per Yr per worker	CY07 Avg Investigations Completed per Mo per worker
2.0	193	170	186	9.4%	3	93.0	7.8
25.0	2,684	3,040	2,709	-10.9%	73	108.4	9.0
132.5	15,424	16,116	16,005	-0.7%	1,065	120.8	10.1

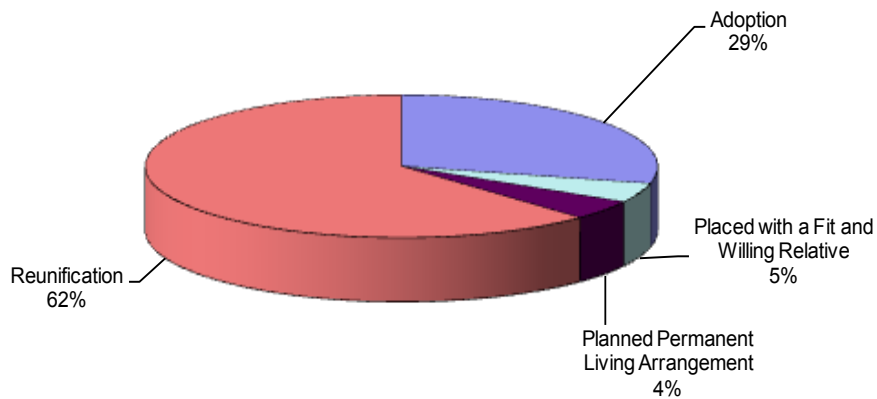
Source: SM01a02

QUAY COUNTY (REGION 4/TOM CASSIDY COUNTY MANGER)

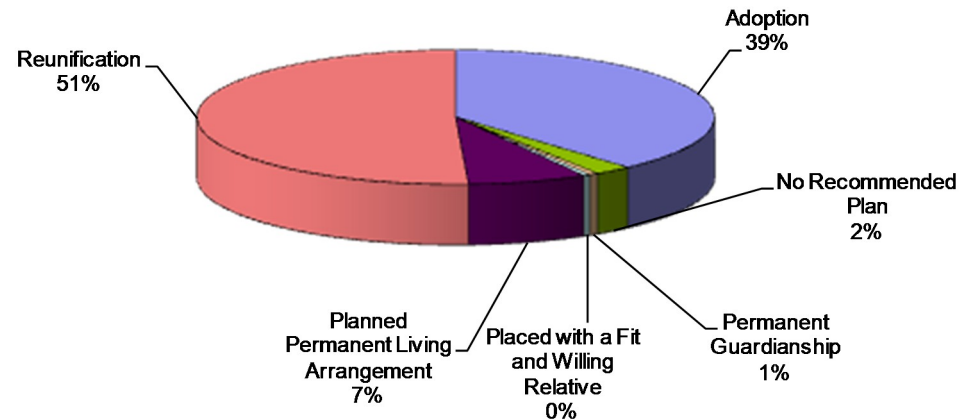
POINT IN TIME MEASURES: MARCH 31, 2008

County Quay	Number	Region Total	State Total	% of State Total
NUMBER OF CHILDREN IN CARE (SM0907)	42	521	2,246	1.87%
• AVERAGE LENGTH OF STAY IN FOSTER CARE (IN MONTHS - END QTR) (SM0907)	17.9	18.4	20.1	
NUMBER OF FOSTER CARE PROVIDERS (PM02a01)	12	174	993	1.21%
NUMBER OF ADOPTION PROVIDERS (PM02a01)	11	188	1,496	0.74%
NUMBER OF CHILDREN WITH A PLAN OF ADOPTION (PM02a01)	13	148	895	1.45%
• NUMBER CHILDREN FREED AND WAITING (SM0907)	6	87	451	1.33%
• NUMBER OF CHILDREN FREED AND WAITING (WITH RESOURCES) (SM0803)	0	24	114	0.00%
• NUMBER OF CHILDREN FREED AND WAITING (WITHOUT RESOURCES) (SM0803)	6	63	337	1.78%
PERMANENT PLAN LIVING ARRANGEMENT (SM0904)	2	52	173	1.16%
WORKER VISITS WITH CHILDREN IN CARE (SM08-06)	Coming Soon			

Permanency Plan Goals of Children in Custody
 Quay County N = 45
 Point In Time March 31, 2008
 Source: SM0904



Permanency Plan Goals of Children in Custody
 New Mexico N = 2327
 Point In Time March 31, 2008
 Source: SM0904



QUAY COUNTY (REGION 4/TOM CASSIDY COUNTY MANGER)

RECURRENCE OF SUBSTANTIATED MALTREATMENT WITHIN 6 MONTHS OF A PREVIOUSLY SUBSTANTIATED REPORT OF MALTREATMENT

County Quay	Total # of Maltreatment Victims	# With Recurrence	% With Recurrence
3rd Qtr SFY 08	22	0	0.0%
Region Total	316	17	5.4%
State Total	1,047	55	5.3%

Round 1 Federal National Standard = No more than 6.1%
New Mexico SFY 08 Standard = No more than 7.0%

Source: SM0907

CHILDREN REENTERING CARE WITHIN TWELVE MONTHS OF A PRIOR EPISODE

County Quay	Total Entering Care #	# Reentering Within 12 Months	% Reentering Within 12 Months
3rd Qtr SFY 08	1	0	0.0%
Region Total	128	6	4.7%
State Total	534	43	8.1%

Round 1 Federal National Standard = No More than 8.6%
New Mexico SFY 08 Standard = No Standard

Source: SM0907

Note: SFY = State Fiscal Year. In New Mexico the State Fiscal year is July 1 through June 30 of the following year.

CHILDREN MALTREATED IN FOSTER CARE (PERFORMANCE OVER A ROLLING 12 MONTHS PERIOD)

County Quay	Total # of Children in Care	# Maltreated	% of Maltreated in Foster Care
3rd Qtr SFY 08	72	0	0.00%
Region Total	992	8	0.81%
State Total	4,680	20	0.43%

Round 1 Federal National Standard = No more than 0.57%
New Mexico SFY08 State Standard = No more than 0.57%

Source: SM0907

CHILDREN REUNIFIED IN LESS THAN TWELVE MONTHS OF ENTRY INTO CARE

County Quay	Total # Reunified	# Reunified less than 12 mos	% Reunified less than 12 mos
3rd Qtr SFY 08	11	6	54.5%
Region Total	93	70	75.3%
State Total	351	260	74.1%

Round 1 Federal National Standard = At or above 76.2%
New Mexico SFY 08 State Standard = At or above 85.0%

Source: SM0907

CHILDREN IN FOSTER CARE FOR UP TO 12 MONTHS WITH NO MORE THAN TWO PLACEMENT SETTING

County Quay	Total	# With Two or Fewer	% With Two or Fewer
3rd Qtr SFY 08	21	12	57.14%
Region Total	357	251	70.31%
State Total	1,396	1,007	72.13%

Round 1 Federal National Standard = At or Above 86.7%
New Mexico SFY 08 Standard = At or Above 86.7%

Source: SM0907

CHILDREN WITH A FINALIZED ADOPTION WITHIN 24 MONTHS OF ENTRY INTO CARE

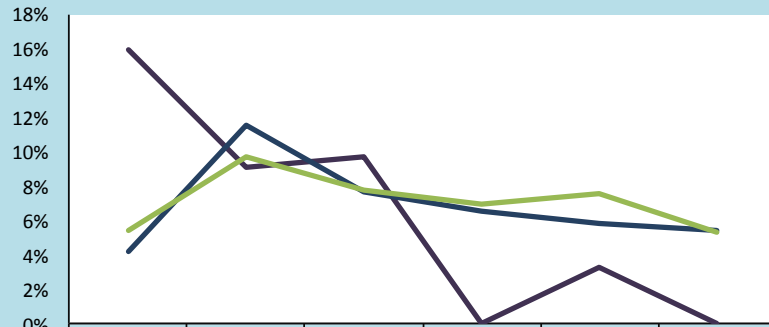
County Quay	Total # Adopted	# <24 mos.	% <24 mos.
3rd Qtr SFY 08	2	0	0.0%
Region Total	31	12	38.7%
State Total	198	87	43.9%

Round 1 Federal National Standard = at least 32.0%
New Mexico SFY 08 Standard = At least 34.0%

Source: SM0907

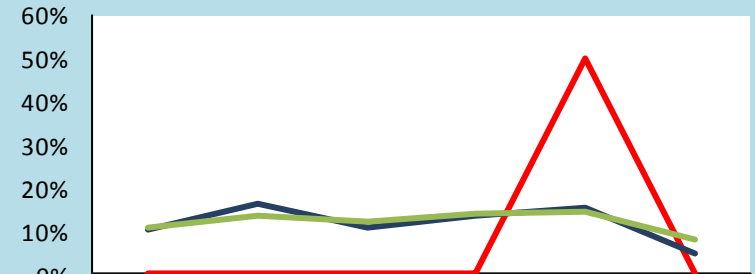
QUAY COUNTY (REGION 4/TOM CASSIDY COUNTY MANGER)

Trends of Recurrence of Substantiated Maltreatment Within 6 Months of a Previously Substantiated Report of Maltreatment
ACF National Standard = 6.1%



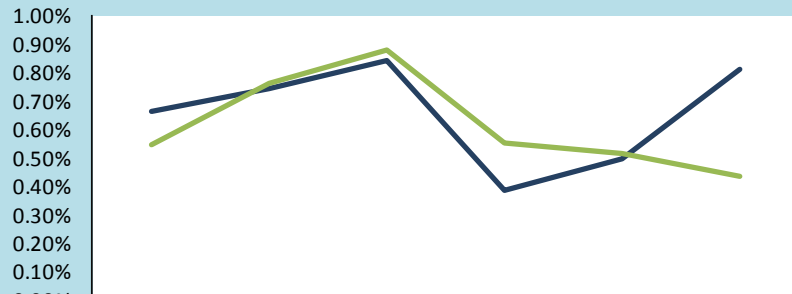
	Q2 SFY07	Q3 SFY07	Q4 SFY07	Q1 SFY08	Q2 SFY08	Q3 SFY08
Quay	16.0%	9.1%	9.7%	0.0%	3.3%	0.0%
Region Total	4.2%	11.6%	7.7%	6.6%	5.8%	5.4%
State Total	5.4%	9.7%	7.8%	6.9%	7.6%	5.3%

Trends of Children Reentering Care within Twelve Months of a Prior Episode
ACF National Standard = 8.6%



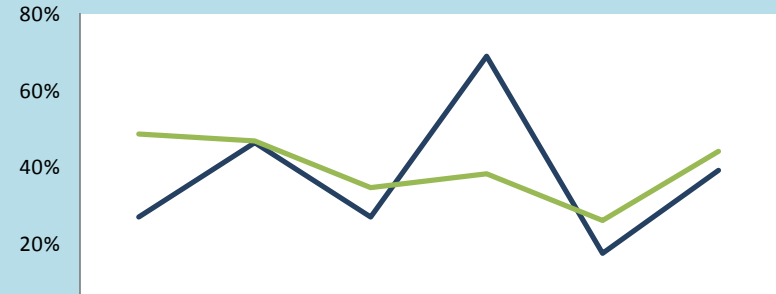
	Q2 SFY07	Q3 SFY07	Q4 SFY07	Q1 SFY08	Q2 SFY08	Q3 SFY08
Quay	0.0%	0.0%	0.0%	0.0%	50.0%	0.0%
Region Total	10.1%	16.3%	10.9%	13.4%	15.5%	4.7%
State Total	10.6%	13.4%	12.1%	13.6%	14.2%	8.1%

Trends of Children Maltreated in Foster Care (performance over Rolling 12 Months)
ACF National Standard = 0.57%



	Yr Ending 12/31/06	Yr Ending 04/31/07	Yr Ending 06/30/07	Yr Ending 09/30/07	Yr Ending 12/31/07	Yr Ending 03/31/08
Quay	0.00%	0.00%	0.00%	0.00%	0.00%	0.00%
Region Total	0.66%	0.74%	0.84%	0.38%	0.49%	0.81%
State Total	0.54%	0.76%	0.88%	0.55%	0.51%	0.43%

Trends of Children With a Finalized Adoption Within 24 Months of Entry Into Care
ACF National Standard = 32.0%



	Q2 SFY07	Q3 SFY07	Q4 SFY07	Q1 SFY08	Q2 SFY08	Q3 SFY08
Quay	0.0%	0.0%	0.0%	0.0%	0.0%	0.0%
Region Total	26.7%	46.2%	26.7%	68.8%	17.1%	38.7%
State Total	48.2%	46.3%	34.4%	38.0%	25.7%	43.9%

Note: The reader should note that in the instance of existing children maltreated in Foster Care, cases are carried forward in the calculation for 12 rolling months. Thus trend data will display the existing cases for 12 consecutive months. For this reason elevated levels across multiple quarter may not indicate new cases for this measure.

ROOSEVELT COUNTY (SE REGION 4/PATTY SAYLOR COUNTY MANAGER)

According to the US Census in 2005, Roosevelt County attained an overall population of 18,018 or 0.97% of the state's total population. There were 5,060 children in the county in 2005; this represents 0.99% of the state's total children under 18. While the whole county accounts for **0.99%** of the state's total children under 18, Roosevelt County had **2.27%** of the state's total children in care as of March 31, 2008.

	Race and Ethnicity			
	Roosevelt ¹		Total Population ²	
	Children Under 19 yrs	Children Under 19 yrs of Hispanic Origin	Roosevelt	New Mexico
Total Population	5,699	2,579	18,018	1,854,938
White	94.3%	96.6%	74.1%	66.8%
Black	2.7%	1.8%	1.7%	1.9%
American Indian or Alaskan Native	1.5%	1.0%	1.1%	9.5%
Asian	0.0%	0.0%	0.6%	1.1%
Native Hawaiian or Other Pacific Islander	0.0%	0.0%	0.1%	0.1%
Some other Race	0.9%	0.2%	19.8%	17.0%
Hispanic or Latino			33.3%	42.1%
Under 18 yrs			5,060	511,768
% of Families Living under the poverty Level			17.3%	14.5%

1. Source: U.S. Census Bureau, Population Division\Bureau of Business and Economic Research, Univ. of New Mexico.
 2. Source: U.S. Census Bureau\State and County QuickFACTS

Children In Care End 03/31/08 Roosevelt County		
HISPANIC	No	Yes
Percentage	47.1%	52.9%

RACE	Total	%
Black or African American	10	19.6%
White	41	80.4%
Total	51	

Source: SM0907



County	Age of Children in Care End 03/31/08										
	< 1 yr		1 - 5 yrs		6 - 10 yrs		11 - 15 yrs		16 - 17 yrs		Total
	%	#	%	#	%	#	%	#	%	#	
Roosevelt	4%	2	43%	22	22%	11	16%	8	16%	8	52
Region Total	6.5%	34	36.9%	192	23.0%	120	20.1%	105	13.5%	70	521
State Total	5.7%	129	37.1%	832	25.3%	567	20.8%	467	11.3%	253	2,246

Source: SM0907

ROOSEVELT COUNTY (REGION 4/PATTY SAYLOR COUNTY MANAGER)

PROTECTIVE SERVICES REPORTS AND INVESTIGATIONS - QUARTER 3 SFY 08: JANUARY - MARCH 2008

County	Accepted Reports	Investigations							
		Substantiated	Unsubstantiated	Total Investigations	County % of State Total Investigations ¹	Number of Children Victims	Victim Rate ² per 1,000 children		
Roosevelt	27	8	22.9%	27	77.1%	35	1.0%	12	9.5
Region Total	604	202	36.0%	359	64.0%	561	16.8%	316	17.7
State Total	3,521	842	25.1%	2,506	74.9%	3,348	100.0%	1,217	9.5

Note: Not all "accepted reports" result in investigations completed during the period under review.

- Both County and Regional data are calculated as a % of the State's total investigations for the period under review.
- For the quarterly *360 Degrees* County Profiles Report this information is calculated by annualizing the quarterly data. For the SFY Annual *360 Degrees* County Profiles Report this information is calculated, based on four quarters of reported data.

Source: SM01a02 and SM06a01

HOW ARE WE DOING?
By comparing "total investigations" for the quarter with "accepted reports" for the quarter, you can get a **sense** of work flow. To get a further sense of work flow, also review the cases with a "pending over 30 days" status and the case weight information for each county.

CPS ALLEGATION TYPES OF CHILD MALTREATMENT - QUARTER 3 SFY 08: JANUARY - MARCH 2008

Valencia	Physical Abuse				Sexual Abuse				Physical Neglect				Totals							
	Total	Substantiated	Unsubstantiated	%	Total	Substantiated	Unsubstantiated	%	Total	Substantiated	Unsubstantiated	%	Total	Substantiated	Unsubstantiated	%				
Roosevelt	20	1	5.0%	19	95.0%	3	1	33.3%	2	66.7%	68	17	25.0%	51	75.0%	91	19	20.9%	72	79.1%
Region Total	364	92	25.3%	272	74.7%	49	15	30.6%	34	69.4%	1,086	354	32.6%	732	67.4%	1,499	461	30.8%	1,038	69.2%
State Total	2,455	444	18.1%	2,011	81.9%	301	69	22.9%	232	77.1%	5,738	1,433	25.0%	4,305	75.0%	8,494	1,946	22.9%	6,548	77.1%

Note: In every investigation there may be multiple allegations of maltreatment for one or more children. In counties with small populations, very small numbers in any category may render suspect any data collected during the period under review.

Source: SM06a01



PENDING INVESTIGATIONS: MARCH 2008

County	Reports Without An Investigation After 30 days		Pending Over 30 Days						Pending Less Than 30 Days		
	02/08	03/08	Baseline 11/04 Total	02/08 Total	03/08 Total	Priority Levels 03/08			Baseline 11/04 Total	02/08 Total	03/08 Total
						E	P1	P2			
Roosevelt	0	0	35	3	3	0	2	1	21	7	7
Region Total	0	0	426	109	97	9	19	69	228	178	201
State Total	8	5	4,917	1,092	1,172	122	225	825	1,296	1,079	1,112

Source: SM06a01

ROOSEVELT COUNTY (REGION 4/PATTY SAYLOR COUNTY MANAGER)



CHILDREN IN AN OUT OF HOME PLACEMENT FOR MORE THAN TEN DAYS WITH AN INITIAL EPSDT¹ EXAMINATION 3RD QUARTER SFY 08

County	Children With Initial EPSDT Exam During Reporting Period		Children Without Initial EPSDT Exam During Reporting Period		Total Children in Out of Home Placement Greater Than 10 Days ²	Children with Initial EPSDT Within 30 Days	
	#	%	#	%	#	#	%
Roosevelt	5	71.4%	2	28.6%	7	3	42.9%
Region Total	25	36.8%	43	63.2%	68	20	29.4%
State Total	141	49.0%	147	51.0%	288	115	39.9%

1. EPSDT = Early and Periodic Screening, Diagnosis and Treatment Medicaid Medical Visits.
2. Report counts all children entering care during the parameter period and remaining in care more than 10 days.

Source: SM10a36

ADOPTION AND ADOLESCENT RESOURCE TEAM –3RD QUARTER SFY 08

	ADOPTION MEASURES NOT ACHIEVED	Total Cases	Not Achieved as % of Total Cases
Roosevelt	0	19	0.0%
Region Total	6	399	1.5%
State Total	49	3,382	1.4%

ADOPTION AND ADOLESCENT RESOURCE TEAM –3RD QUARTER SFY 08

	INDEPENDENT LIVING MEASURES NOT ACHIEVED	Total Cases	Not Achieved as % of Total Cases
Roosevelt	0	52	0.0%
Region Total	8	319	2.5%
State Total	25	1,234	2.0%

Source: JTS Database

Permanency Worker Case Weights SM0904 March 2008 Monthly Report

County	Number of Children in Custody as of 12/31/07	Number of Permanency Worker Positions as of 12/31/07	Number of Children per Permanency Worker as of 12/07
Roosevelt/Curry	143	8	17.9
Region Total	555	29	19.1
State Total	2,475	147.5	16.8

Source: March Monthly 2007 SM0904
FTE Position Responsible for Permanency Planning
Includes 110 Children w/No Plan

Investigation Worker Case Weight Report CY 2007

County	# of PS Investigation Worker Positions	Total # PS Accepted Reports 2007	Total # PS Completed Investigations 2006	Total # PS Completed Investigations 2007	% of Increase/Decrease in Investigations from CY06	Pending Investigation over 30 days 12/07	CY07 Avg Investigations Completed per Yr per worker	CY07 Avg Investigations Completed per Mo per worker
Roosevelt/Curry	6.0	665	736	652	-11.4%	26	108.7	9.1
Region Total	25.0	2,684	3,040	2,709	-10.9%	73	108.4	9.0
State Total	132.5	15,424	16,116	16,005	-0.7%	1,065	120.8	10.1

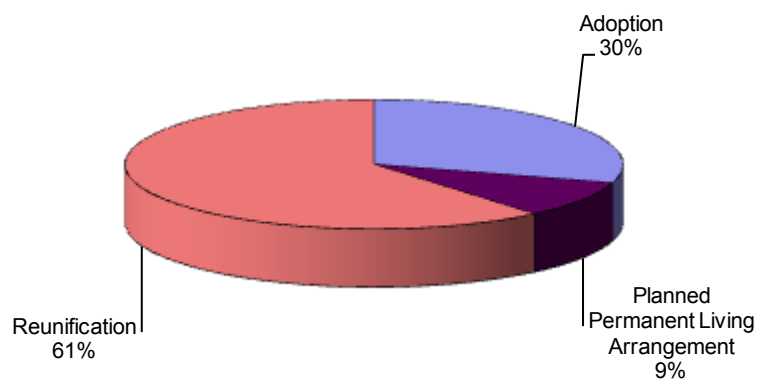
Source: SM01a02

ROOSEVELT COUNTY (REGION 4/PATTY SAYLOR COUNTY MANAGER)

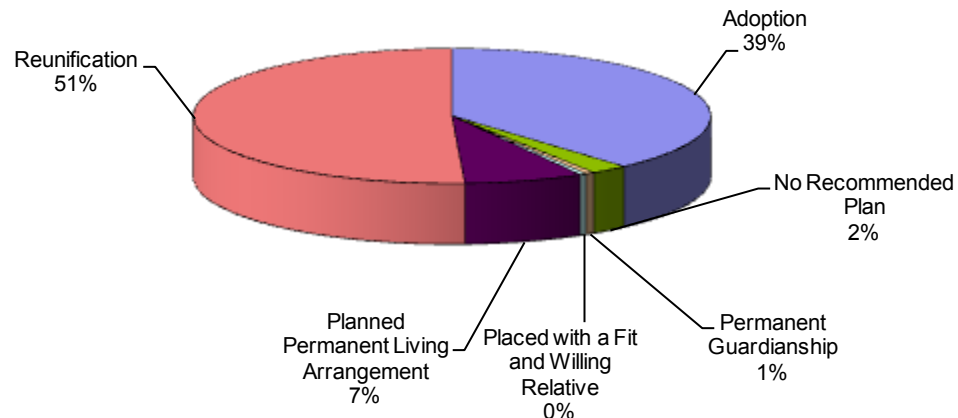
POINT IN TIME MEASURES: MARCH 31, 2008

County Roosevelt	Number	Region Total	State Total	% of State Total
NUMBER OF CHILDREN IN CARE (SM0907)	51	521	2,246	2.27%
• AVERAGE LENGTH OF STAY IN FOSTER CARE (IN MONTHS - END QTR) (SM0907)	22.1	18.4	20.1	
NUMBER OF FOSTER CARE PROVIDERS (PM02a01)	20	174	993	2.01%
NUMBER OF ADOPTION PROVIDERS (PM02a01)	8	188	1,496	0.53%
NUMBER OF CHILDREN WITH A PLAN OF ADOPTION (PM02a01)	16	148	895	1.79%
• NUMBER CHILDREN FREED AND WAITING (SM0907)	6	87	451	1.33%
• NUMBER OF CHILDREN FREED AND WAITING (WITH RESOURCES) (SM0803)	0	24	114	0.00%
• NUMBER OF CHILDREN FREED AND WAITING (WITHOUT RESOURCES) (SM0803)	6	93	337	1.78%
PERMANENT PLAN LIVING ARRANGEMENT (SM0904)	5	52	173	2.89%
WORKER VISITS WITH CHILDREN IN CARE (SM08-06)	Coming Soon			

**Permanency Plan Goals of Children in Custody
Roosevelt County N = 54
Point In Time March 31, 2008**
Source: SM0904



**Permanency Plan Goals of Children in Custody
New Mexico N = 2327
Point In Time March 31, 2008**
Source: SM0904



ROOSEVELT COUNTY (REGION 4/PATTY SAYLOR COUNTY MANAGER)

RECURRENCE OF SUBSTANTIATED MALTREATMENT WITHIN 6 MONTHS OF A PREVIOUSLY SUBSTANTIATED REPORT OF MALTREATMENT

County Roosevelt	Total # of Maltreatment Victims	# With Recurrence	% With Recurrence
3rd Qtr SFY 08	14	0	0.0%
Region Total	316	17	5.4%
State Total	1,047	55	5.3%

Round 1 Federal National Standard = No more than 6.1%
New Mexico SFY 08 Standard = No more than 7.0%

Source: SM0907

CHILDREN REENTERING CARE WITHIN TWELVE MONTHS OF A PRIOR EPISODE

County Roosevelt	Total Entering Care #	# Reentering Within 12 Months	% Reentering Within 12 Months
3rd Qtr SFY 08	7	0	0.0%
Region Total	128	6	4.7%
State Total	534	43	8.1%

Round 1 Federal National Standard = No More than 8.6%
New Mexico SFY 08 Standard = No Standard

Source: SM0907

Note: SFY = State Fiscal Year. In New Mexico the State Fiscal year is July 1 through June 30 of the following year.

CHILDREN MALTREATED IN FOSTER CARE (PERFORMANCE OVER A ROLLING 12 MONTHS PERIOD)

County Roosevelt	Total # of Children in Care	# Maltreated	% of Maltreated in Foster Care
3rd Qtr SFY 08	80	0	0.00%
Region Total	0	0	0.00%
State Total	4,680	20	0.43%

Round 1 Federal National Standard = No more than 0.57%
New Mexico SFY08 State Standard = No more than 0.57%

Source: SM0907

CHILDREN REUNIFIED IN LESS THAN TWELVE MONTHS OF ENTRY INTO CARE

County Roosevelt	Total # Reunified	# Reunified less than 12 mos	% Reunified less than 12 mos
3rd Qtr SFY 08	0	0	0.0%
Region Total	93	70	75.3%
State Total	351	260	74.1%

Round 1 Federal National Standard = At or above 76.2%
New Mexico SFY 08 State Standard = At or above 85.0%

Source: SM0907

CHILDREN IN FOSTER CARE FOR UP TO 12 MONTHS WITH NO MORE THAN TWO PLACEMENT SETTING

County Roosevelt	Total	# With Two or Fewer	% With Two or Fewer
3rd Qtr SFY 08	29	19	65.52%
Region Total	357	251	70.31%
State Total	1,396	1,007	72.13%

Round 1 Federal National Standard = At or Above 86.7%
New Mexico SFY 08 Standard = At or Above 86.7%

Source: SM0907

CHILDREN WITH A FINALIZED ADOPTION WITHIN 24 MONTHS OF ENTRY INTO CARE

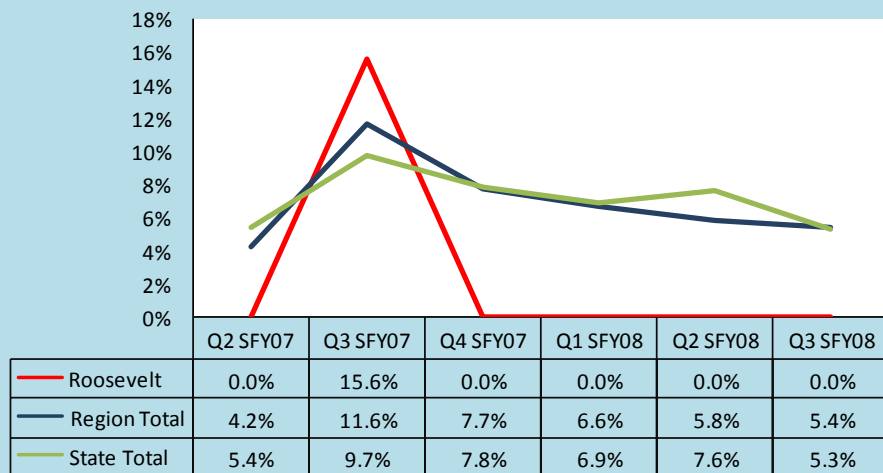
County Roosevelt	Total # Adopted	# <24 mos.	% <24 mos.
3rd Qtr SFY 08	0	0	0.0%
Region Total	31	12	38.7%
State Total	198	87	43.9%

Round 1 Federal National Standard = at least 32.0%
New Mexico SFY 08 Standard = At least 34.0%

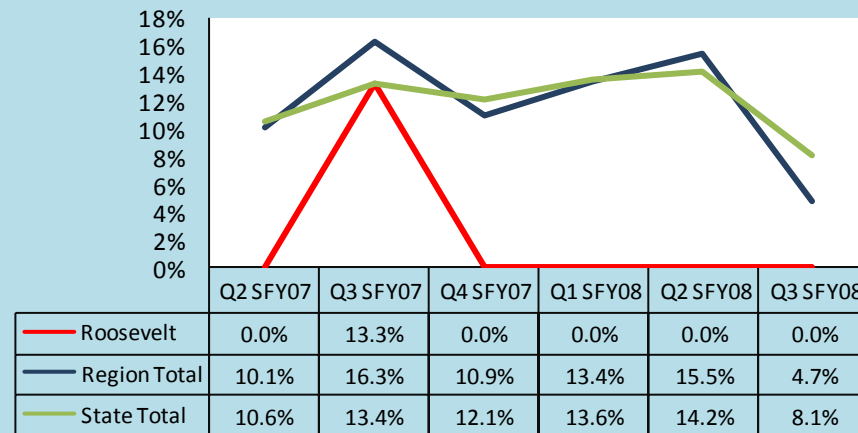
Source: SM0907

ROOSEVELT COUNTY (REGION 4/PATTY SAYLOR COUNTY MANAGER)

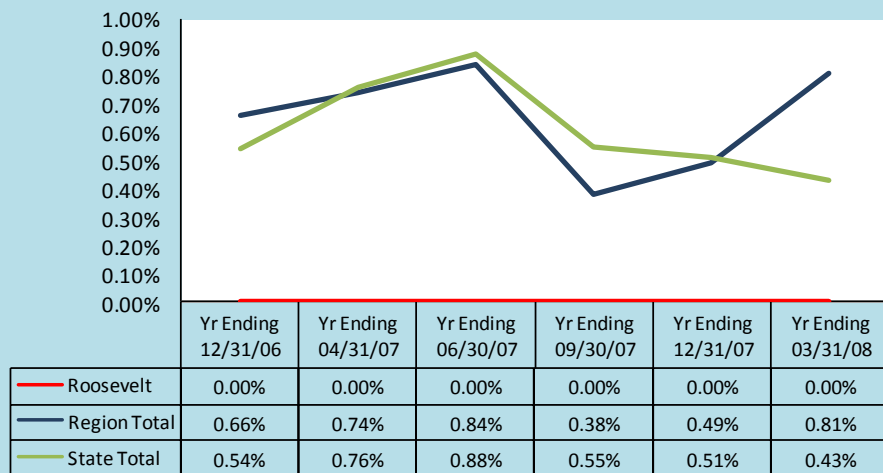
Trends of Recurrence of Substantiated Maltreatment Within 6 Months of a Previously Substantiated Report of Maltreatment
ACF National Standard = 6.1%



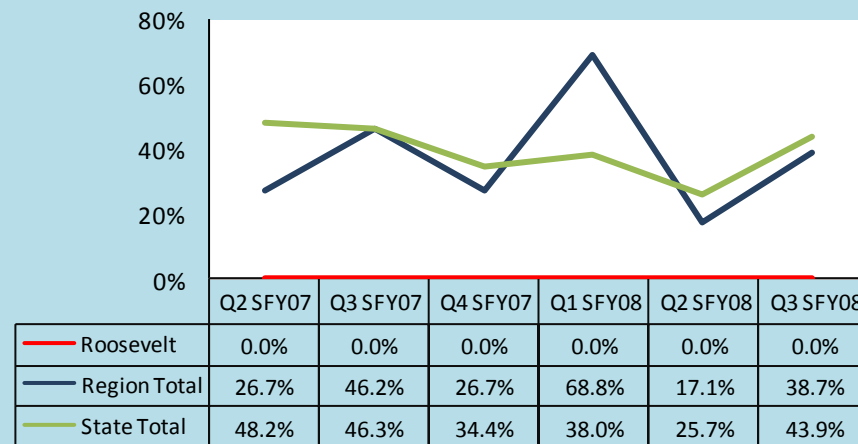
Trends of Children Reentering Care within Twelve Months of A Prior Episode
ACF National Standard = 8.6%



Trends of Children Maltreated in Foster Care (performance over Rolling 12 Months)
ACF National Standard = 0.57%



Trends of Children With a Finalized Adoption Within 24 Months of Entry Into Care
ACF National Standard = 32.0%



Note: The reader should note that in the instance of existing children maltreated in Foster Care, cases are carried forward in the calculation for 12 rolling months. Thus trend data will display the existing cases for 12 consecutive months. For this reason elevated levels across multiple quarter may not indicate new cases for this measure.